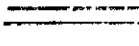


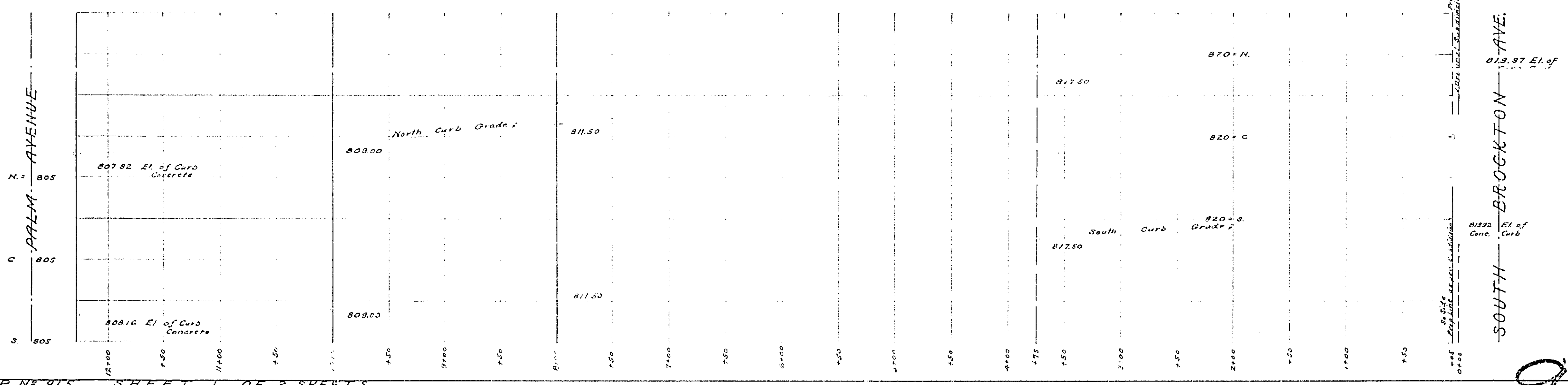
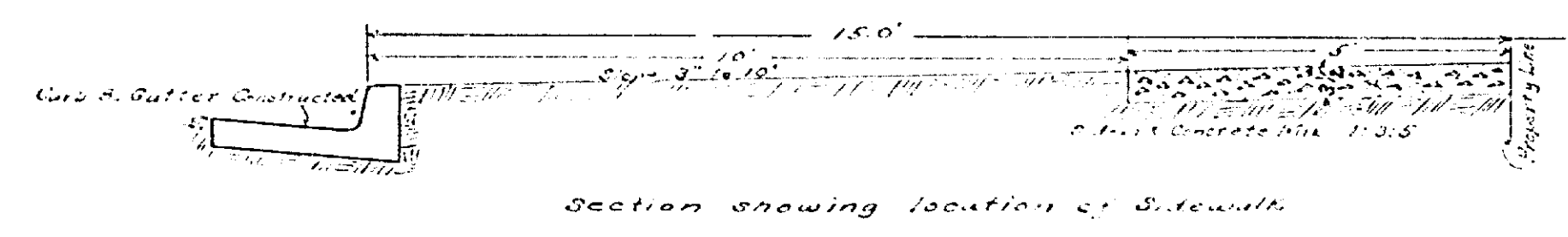
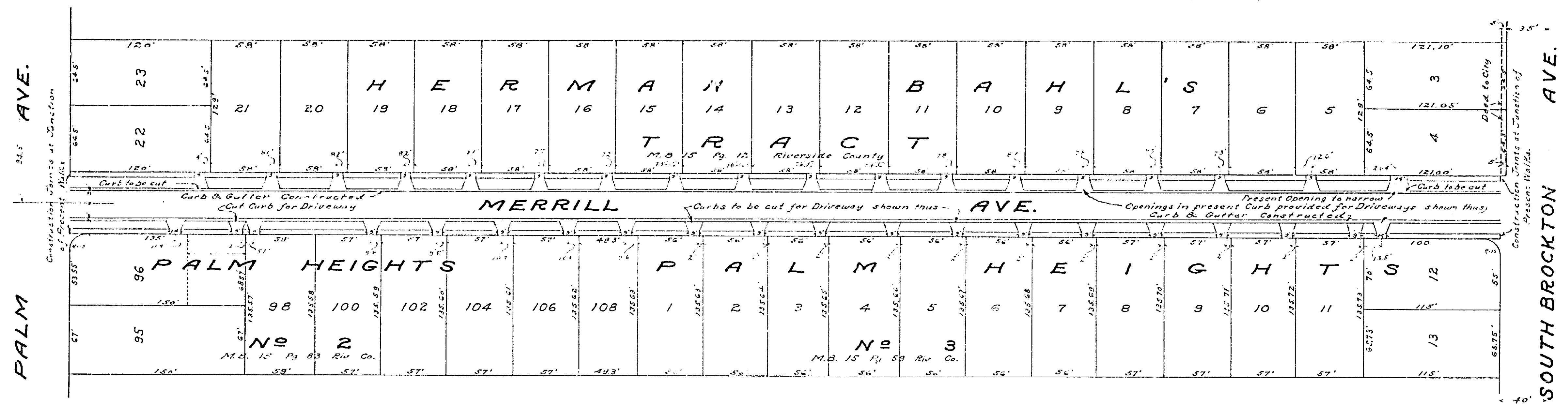


LEGEND
 Cement Concrete Sidewalk to be constructed shown thus: 
 District Boundary 
 Cement Concrete Driveways 
 (Driveways Drawing N° 348A Sheet 2)

**MAP OF PROPOSED IMPROVEMENT OF
 MERRILL AVENUE**
 R.E. BROWN, CITY ENGINEER 1928.

Accepted by the Mayor and Common Council
 of the City of Riverside this 22nd day of June, 1928.
 J. Albert M. ...
 Clerk of the City of Riverside.

MAP N° 915
 SHEET 1
 OF 2 SHEETS



MAP N° 915 SHEET 1 OF 2 SHEETS

915