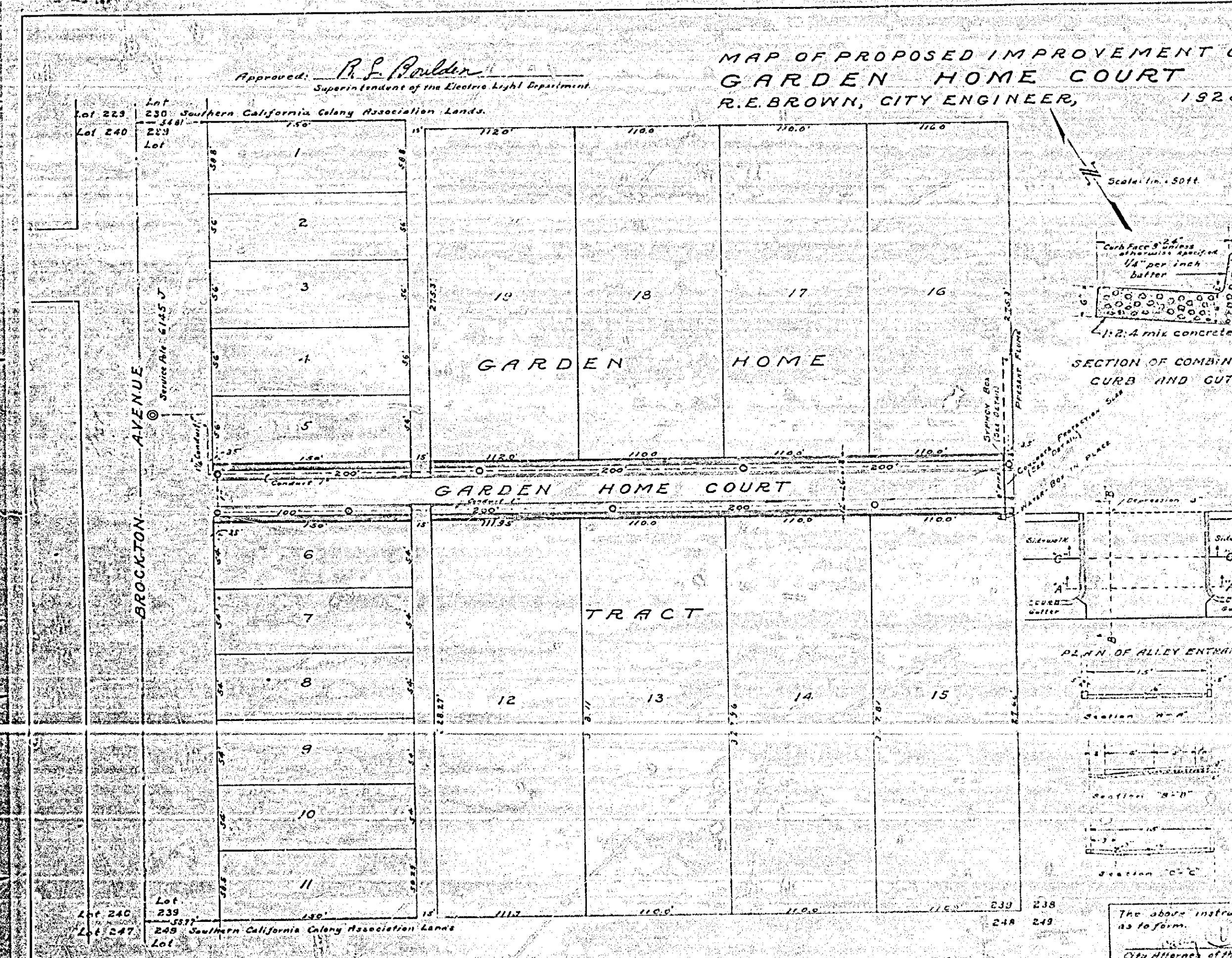


Approved: *R. L. Boulder*
Superintendent of the Electric Light Department

MAP OF PROPOSED IMPROVEMENT ON
GARDEN HOME COURT
R. E. BROWN, CITY ENGINEER, 1928.

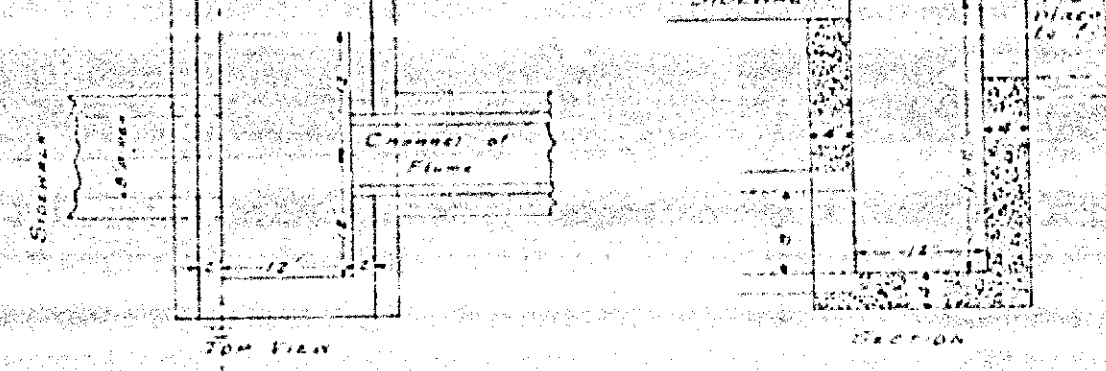
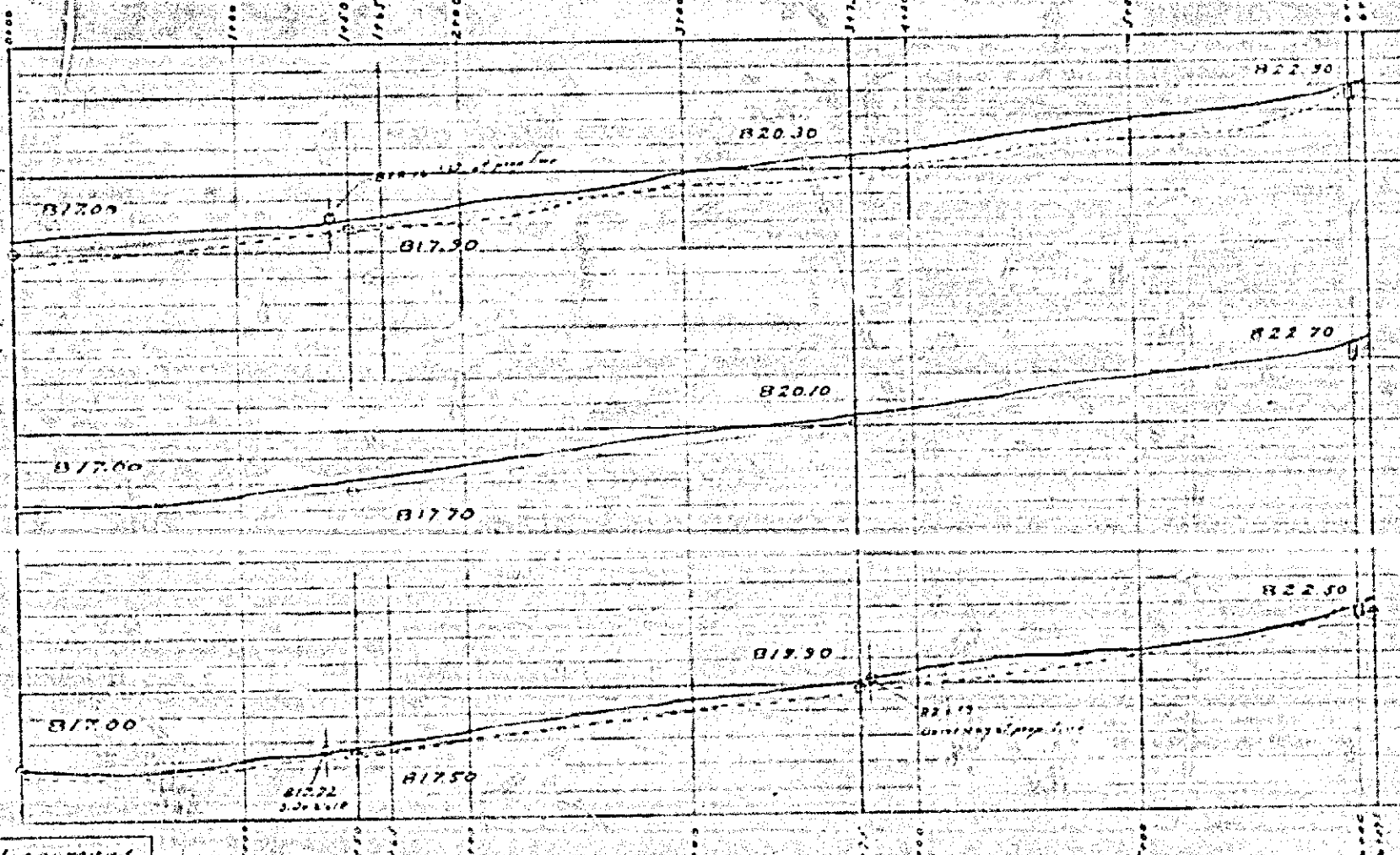
LEGEND
Cement Concrete Alley Entrances
Cement Concrete Combination Curb and Gutter to be constructed as shown that
Cement Concrete Sidewalk
Cement Concrete Joint Tiles (See 222-A Sheet 2)
District Boundary
Service Ties

Adopted by the Mayor and
Common Council of the City
of Riverside, the 10th Day of
May, 1928
Attest: *J. C. Baker*
City Attorney of the City of Riverside

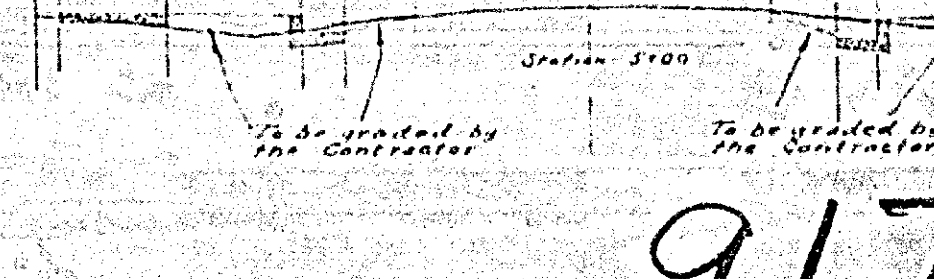
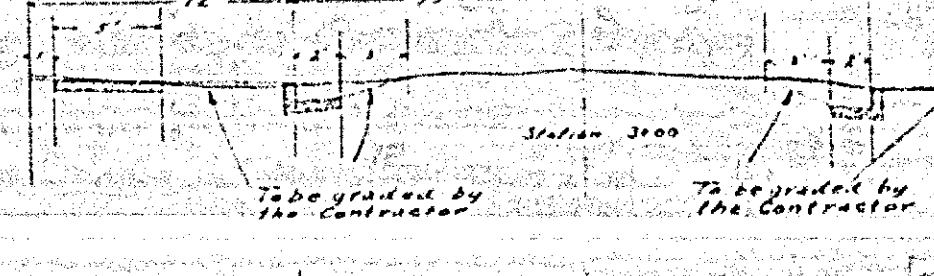
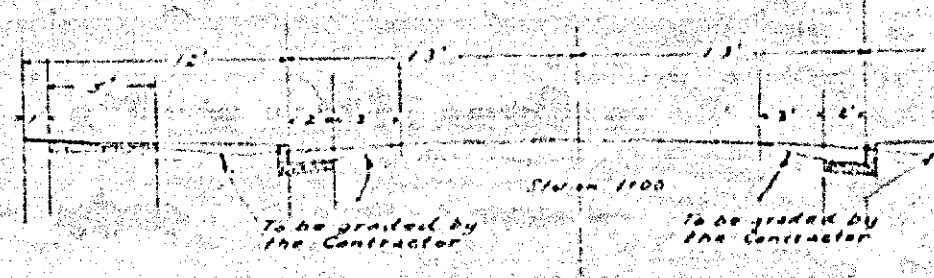


SECTION OF COMBINATION
CURB AND CUTTER

PLAN OF ALLEY ENTRANCE



PLAN FOR CONCRETE SYPHON BOX
11 5/8\"/>



The above instrument approved
as to form.
City Attorney of the City of Riverside.

917

SHEET 1 OF 2 SHEETS
MAP NO. 917