

# PLANS AND PROFILE OF THE PROPOSED IMPROVEMENT OF FIFTEENTH STREET SO. MULBERRY TO THE RIVERSIDE WATER COMPANY CANAL.

Scale 1"=40'

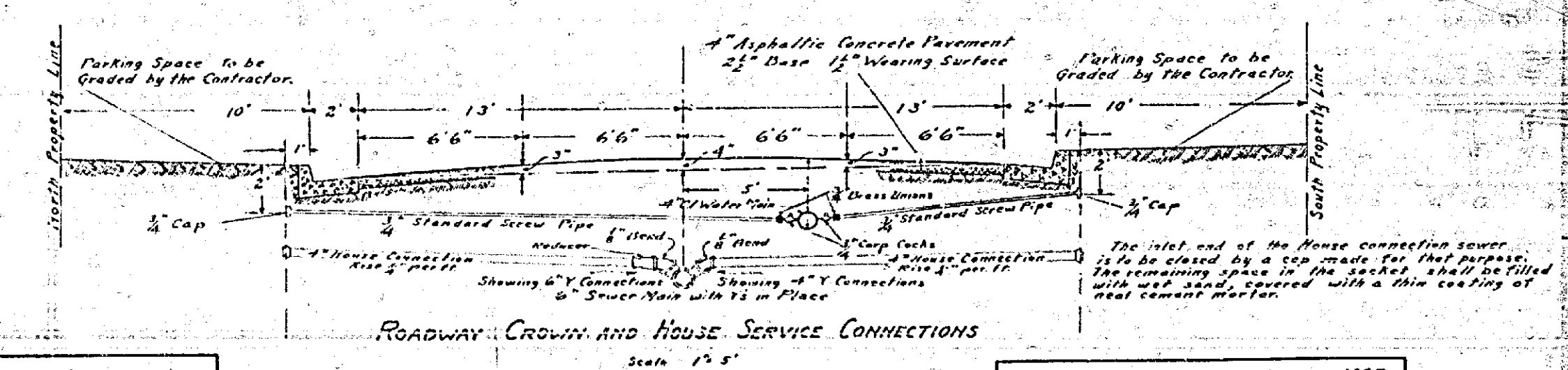
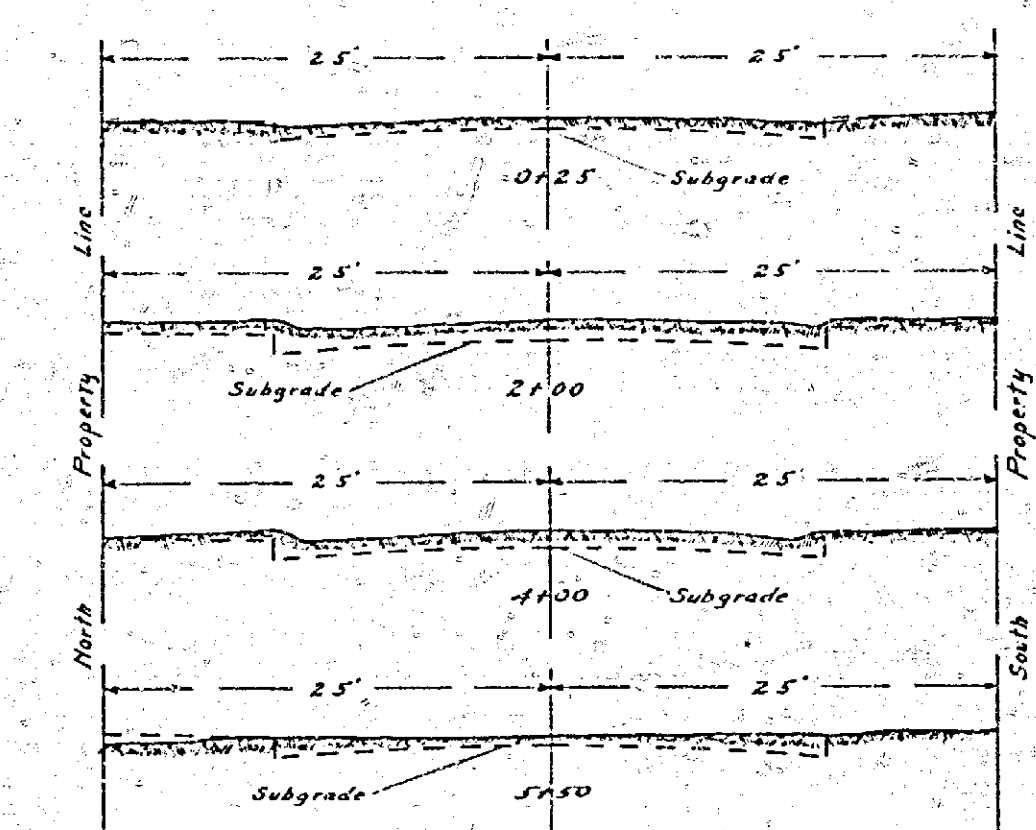
**NOTICE TO CONTRACTOR**  
Detail plans #103 and #107, on file in the City Engineering Department, are a part of these Plans and Specifications.

Adopted by the Mayor and Common Council of  
the City of Riverside this 5<sup>th</sup> day of March 1923.

*J. C. Scott*  
Clerk of the City of Riverside.

### TYPICAL CROSS SECTIONS

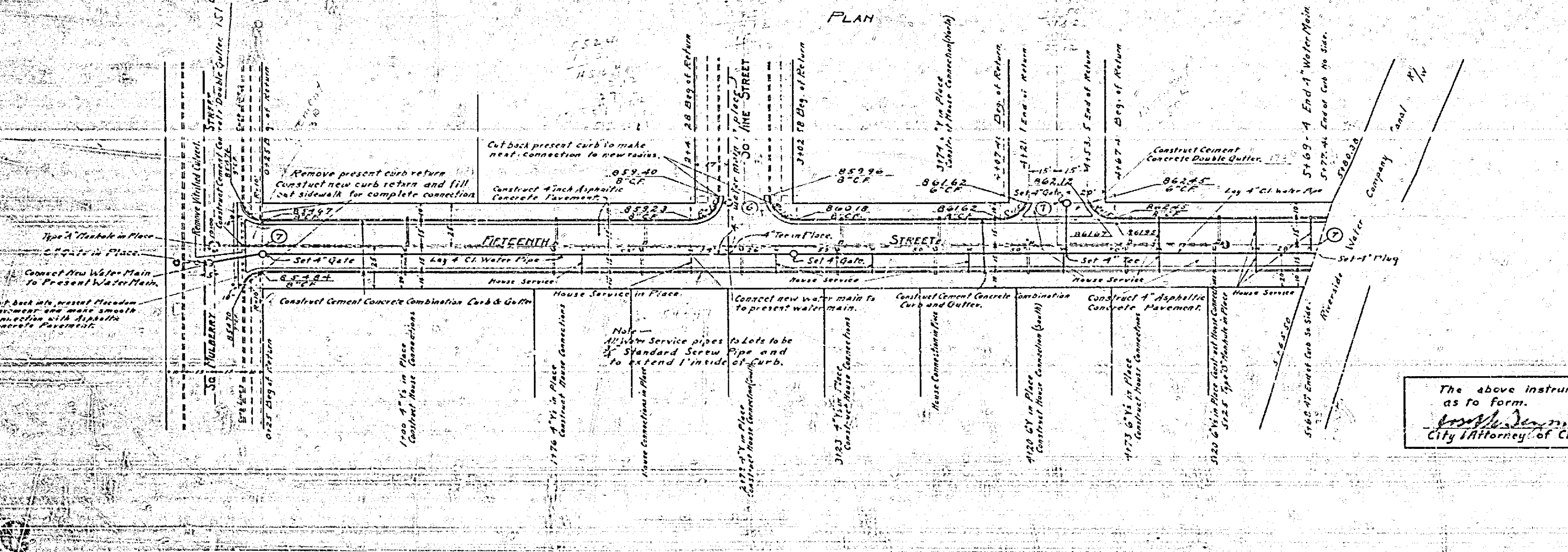
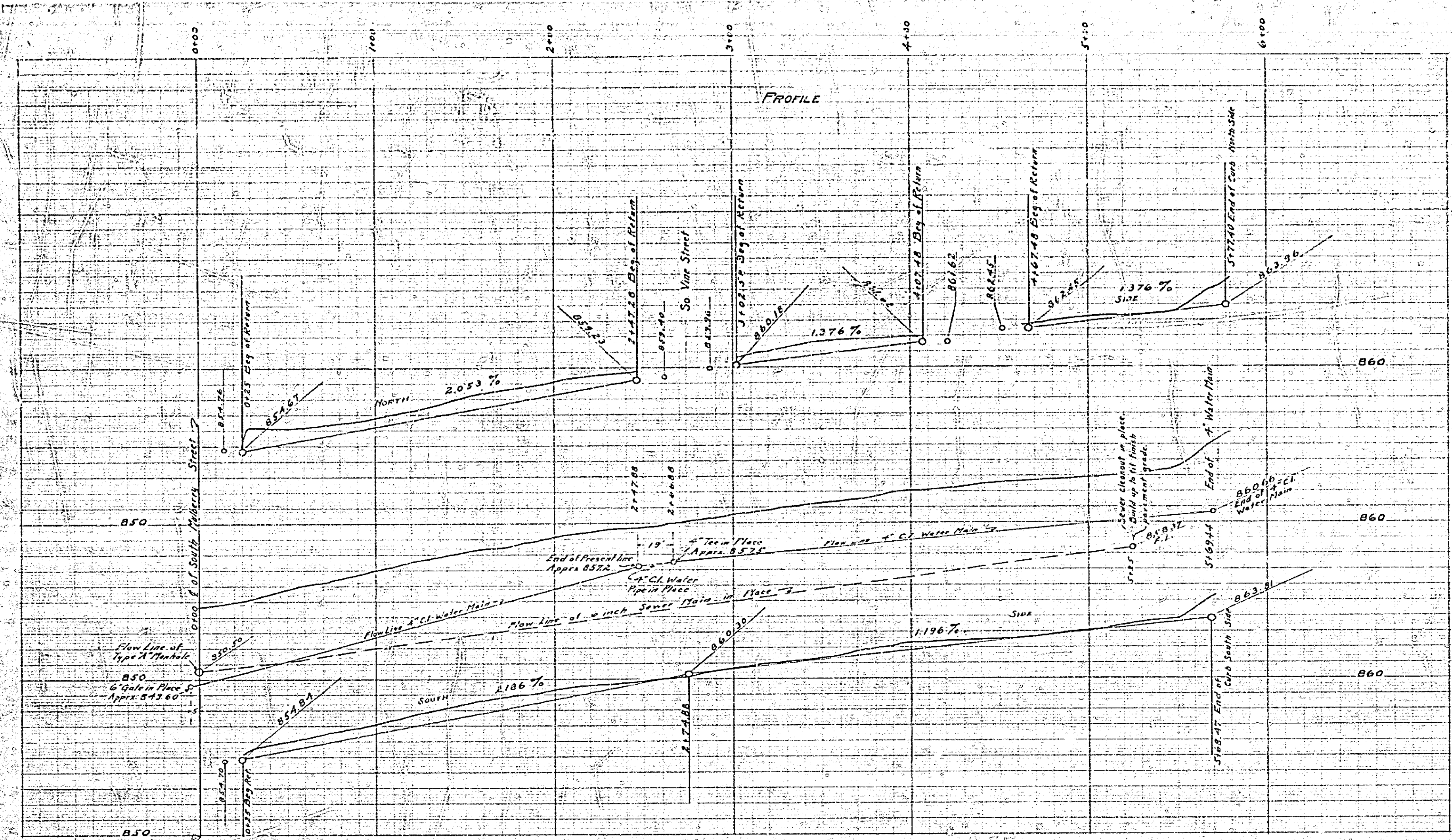
Scale 1"=10'



The above instrument approved  
as to Form.  
*W. H. Deussen*  
City Attorney of City of Riverside.

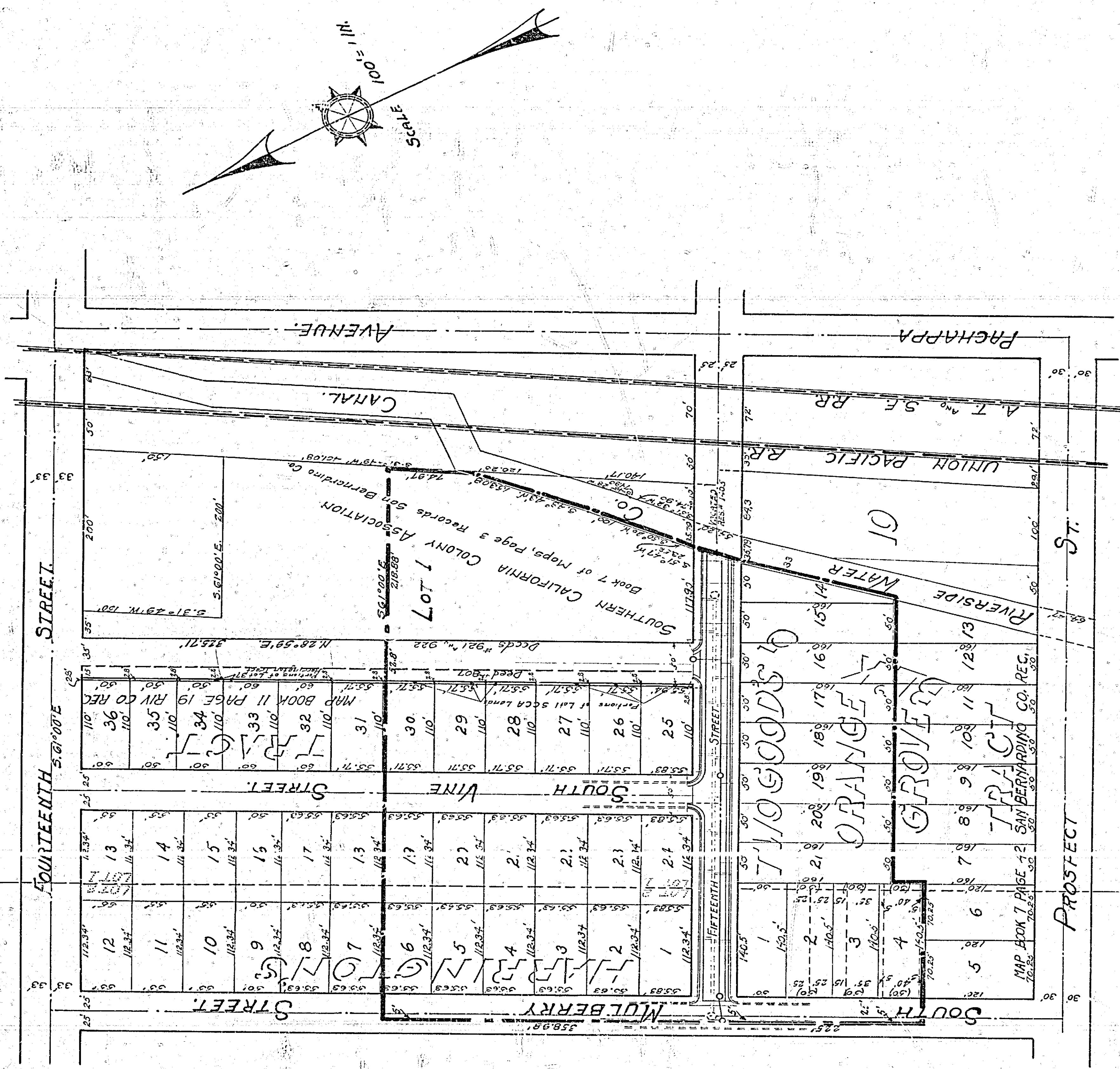
Approved this 26<sup>th</sup> day of February 1923.  
*W. H. Deussen*  
Water Dept. City of Riverside.

929



**MAP** SHOWING THE EXTENT OF THE TERRITORY TO BE INCLUDED IN THE DISTRICT TO BE ASSESSED FOR THE IMPROVEMENT OF FIFTEENTH STREET DISCRIBED IN RESOLUTION OF INTENTION NO. NEW SERIES OF THE COMMON COUNCIL OF THE CITY OF RIVERSIDE.

District Boundary Shown Here



626

