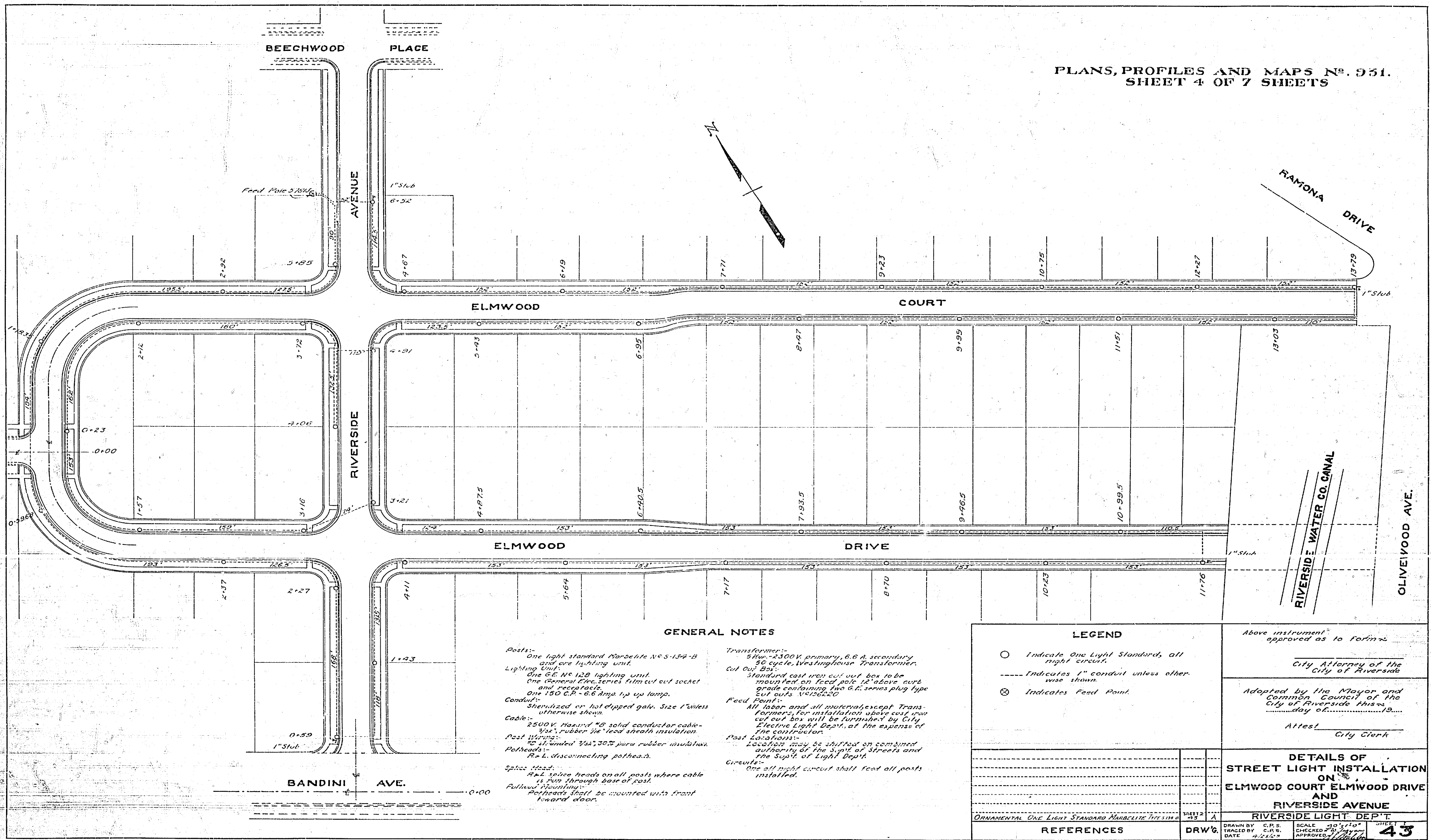


MISSING

MISSING

MISSING

PLANS, PROFILES AND MAPS No. 931.
SHEET 4 OF 7 SHEETS



GENERAL NOTES

- Posts:**
One light standard Morseite No. S-137-B and one lighting unit.
Lighting Unit:
One G.E. No. 128 lighting unit.
One General Elec. series film cut out socket and receptacle.
One 150 C.P. - 6.6 Amp. tip up lamp.
Conduit:
Standardized or hot dipped galv. Size 1" unless otherwise shown.
Cable:
2500 V. Hazard *B solid conductor cable - 3/8" rubber ins. lead sheath insulation.
Post Wiring:
No standard 3/4" 30% pure rubber insulation.
Pothead:
R=L disconnecting pothead.
Splice Head:
R=L splice heads on all posts where cable runs through base of post.
Fullhead Mounting:
Pothead shall be mounted with front toward door.
- Transformer:**
500v-2500V. primary, 6.6 A. secondary. 50 cycle. Westinghouse Transformer.
Cut Out Box:
Standard cast iron cut out box to be mounted on feed pole 12" above curb grade containing two G.E. series plug type cut outs No. 120220.
Feed Point:
All labor and all materials except Transformers for installation above curb cut out box will be furnished by City Electric Light Dept. at the expense of the contractor.
Post Locations:
Location may be shifted on command authority of the Sup't. of Streets and the Sup't. of Light Dept.
Circuits:
One all night circuit shall feed all posts installed.

LEGEND

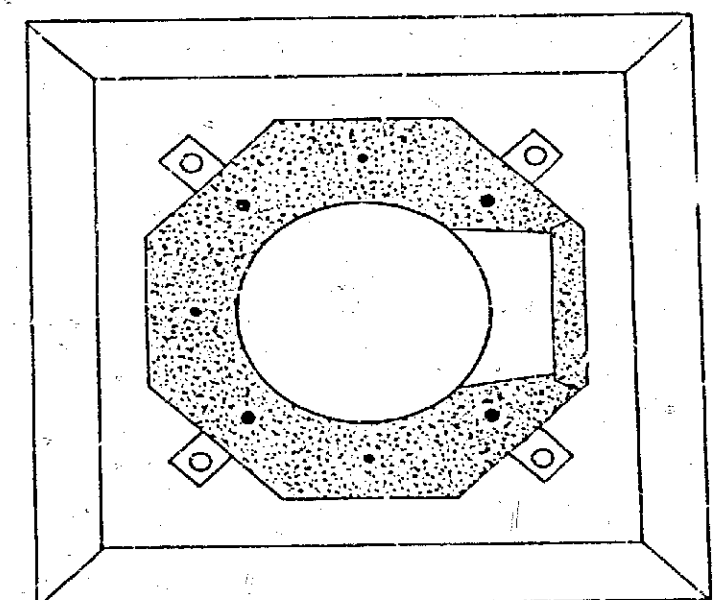
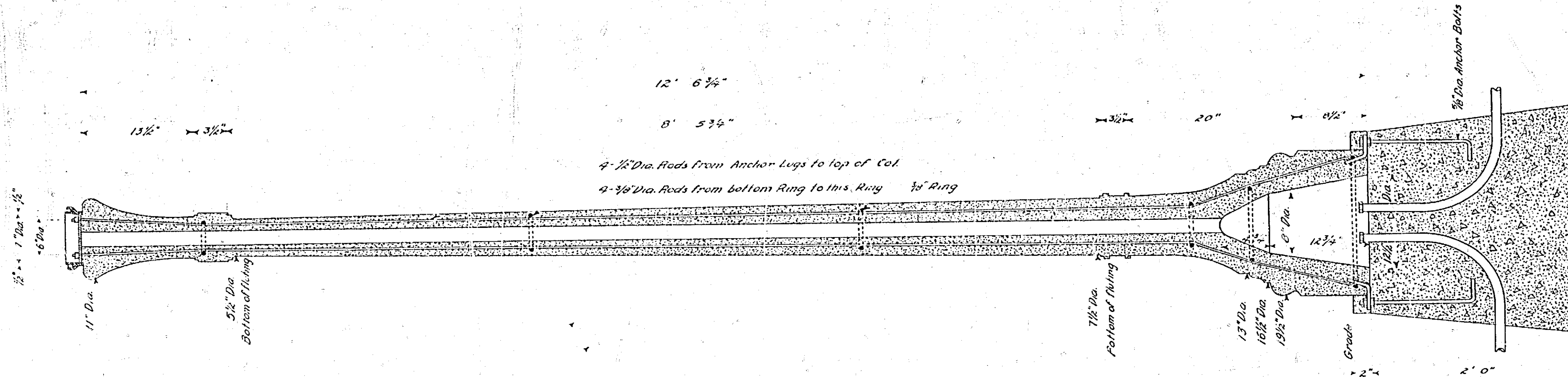
- Indicate One Light Standard, all night circuit.
- Indicates 1" conduit unless otherwise shown.
- ⊗ Indicates Feed Point.

Above instrument approved as to form by
City Attorney of the City of Riverside
Adopted by the Mayor and Common Council of the City of Riverside this _____ day of _____ 19____
Attest _____
City Clerk

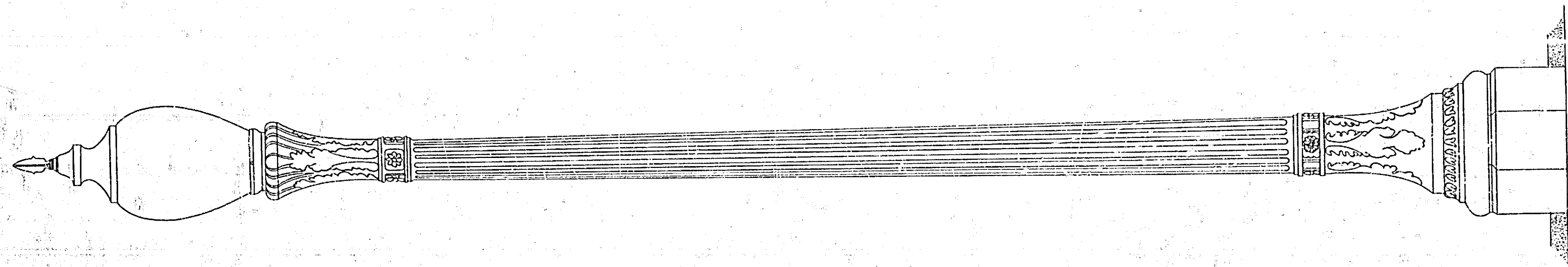
ORNAMENTAL ONE LIGHT STANDARD MARBELLITE TYPE SIMA		SCALE 1/4" = 10'	SHEET 43
DRW'G	C.P.S.	CHECKED	DATE
APPROVED	APPROVED	APPROVED	APPROVED

9316

PLANS, PROFILES AND MAPS N°. 931.
SHEET 3 OF 7 SHEETS



PLAN OF BASE



REFERENCES		DRWG	43	A	St. Lt. Instal. on Elmwood Ct. Dr. & Riverside Ave
DRAWN BY THIS		CHECKED BY C.P.S.	SCALE 1/4" = 1'-0"	SHEET 3	DATE 4/23/20
APPROVED		APPROVED	APPROVED	43	

ORNAMENTAL
ONE LIGHT STANDARD
MARBELITE
TYPE S-134-B

RIVERSIDE LIGHT DEPT.

43

93162

D-136