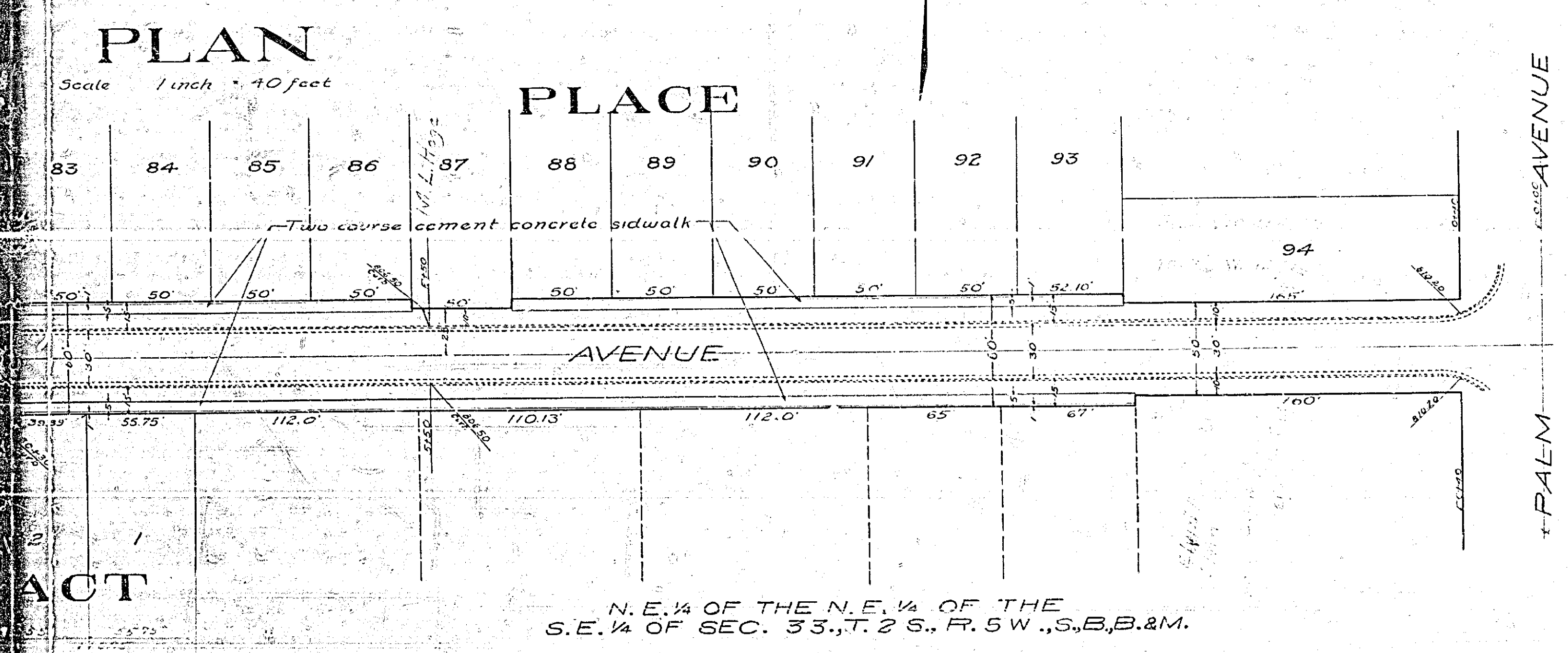


**PLANS AND PROFILES**  
 OF THE PROPOSED SIDEWALK IMPROVEMENT OF  
**CENTRAL AVENUE**  
 FROM PALM AVENUE TO ARCH WAY  
 SCALE 1 IN. = 40 FT.  
 RIVERSIDE CITY ENGINEERING DEPARTMENT      MAY 1929.

**PLANS, PROFILES AND MAPS No. 934      CONSISTING OF 2 SHEETS**  
 SHEET No. 1,      SIDEWALK IMPROVEMENT ON CENTRAL AVENUE.  
 SHEET No. 2,      MAP OF DISTRICT TO BE ASSESSED FOR THE IMPROVEMENT.



N.E. 1/4 OF THE N.E. 1/4 OF THE  
 S.E. 1/4 OF SEC. 35., T. 2 S., R. 5 W., S.B. & M.

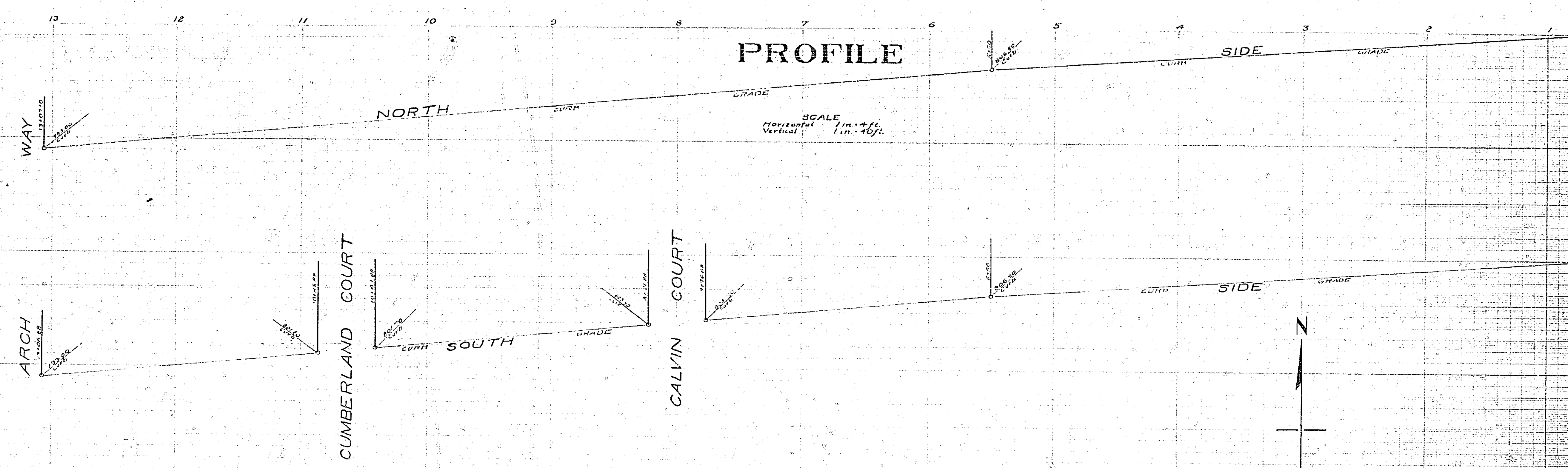
Approved by the Mayor and Common Council  
 of the City of Riverside this... day of June... 1929.  
 Attest: *[Signature]*  
 Clerk of the City of Riverside.

934



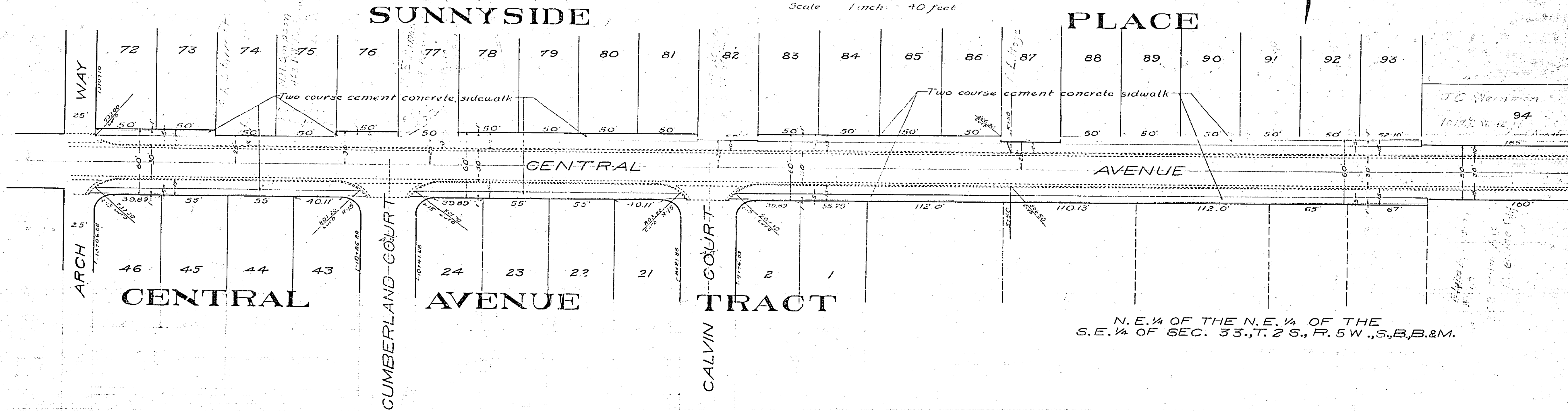
# PROFILE

SCALE  
Horizontal 1 in. = 40 ft.  
Vertical 1 in. = 10 ft.



# PLAN

Scale 1 inch = 40 feet



N. E. 1/4 OF THE N. E. 1/4 OF THE  
S. E. 1/4 OF SEC. 33, T. 2 S., R. 5 W., S., B., & M.