

PLANS AND PROFILES OF THE PROPOSED IMPROVEMENT OF EL PADRO STREET MAGNOLIA AVENUE TO WEST ARLINGTON AVENUE

ENGINEERING DEPT. CITY OF RIVERSIDE
Scale 1 in. = 40 ft.
FIELD BOOK 136

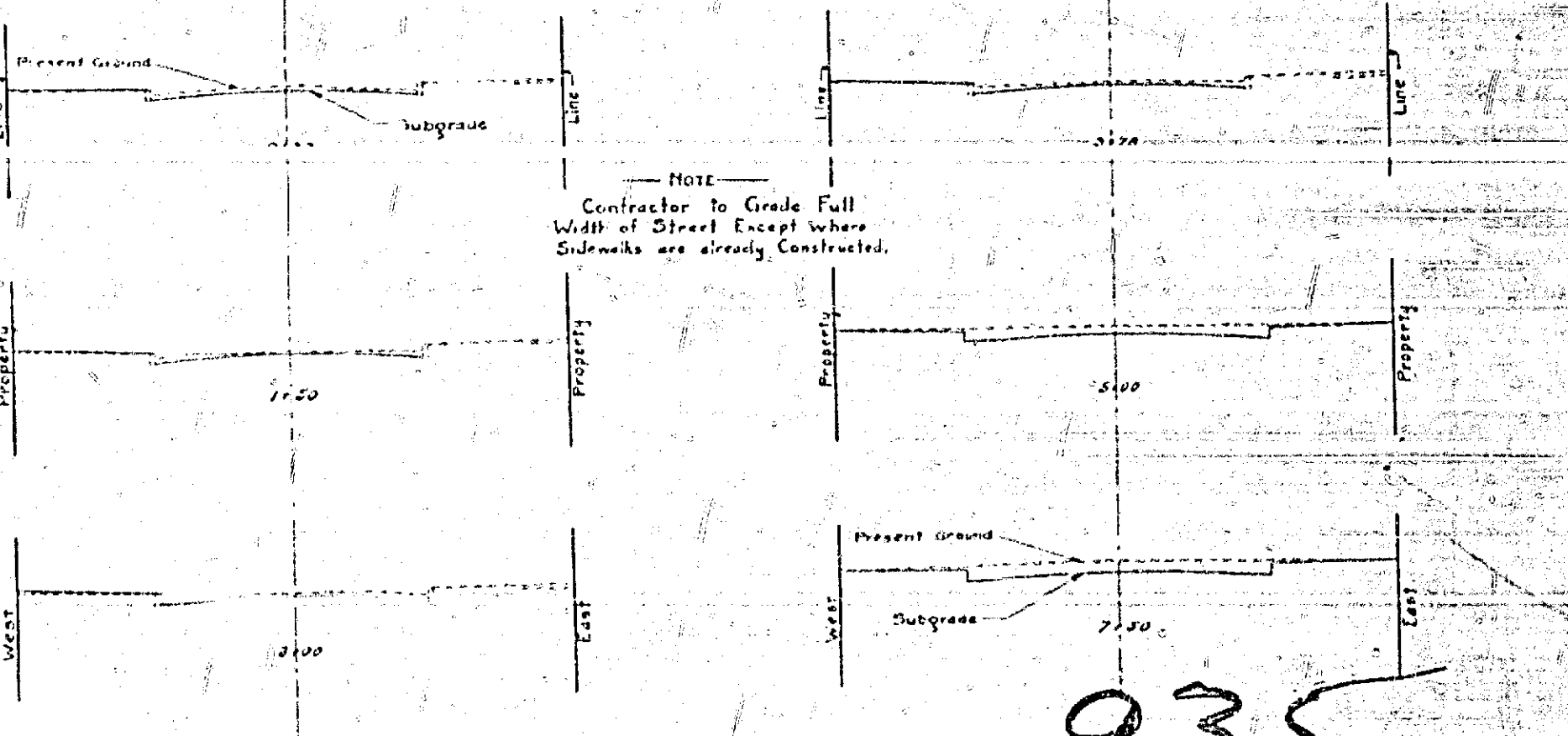
NOTICE TO CONTRACTOR
Folder containing Instructions to Contractor and Detail Plans No 100 and 103 is a part of these Plans and Specifications.

ELEVATIONS SHOWN HEREON ARE U.S.G.S. DATUM

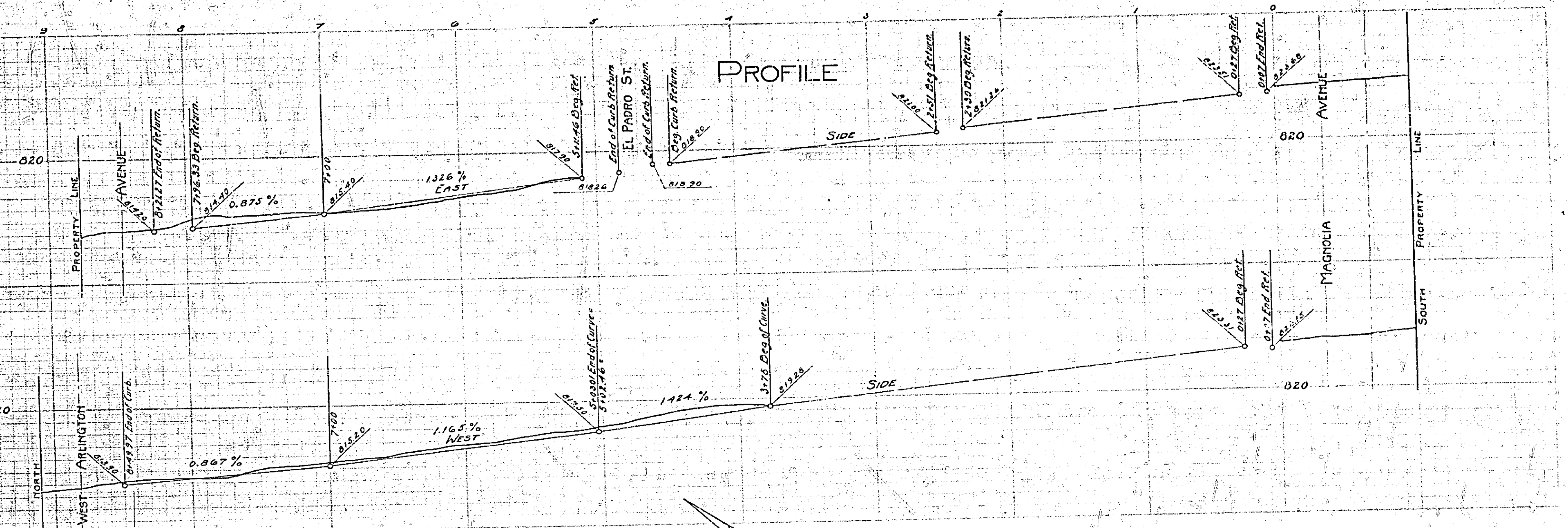
Adopted by the Mayor and Common Council of the City of Riverside this 30 day of July 1923.

George H. Hill
City Engineer

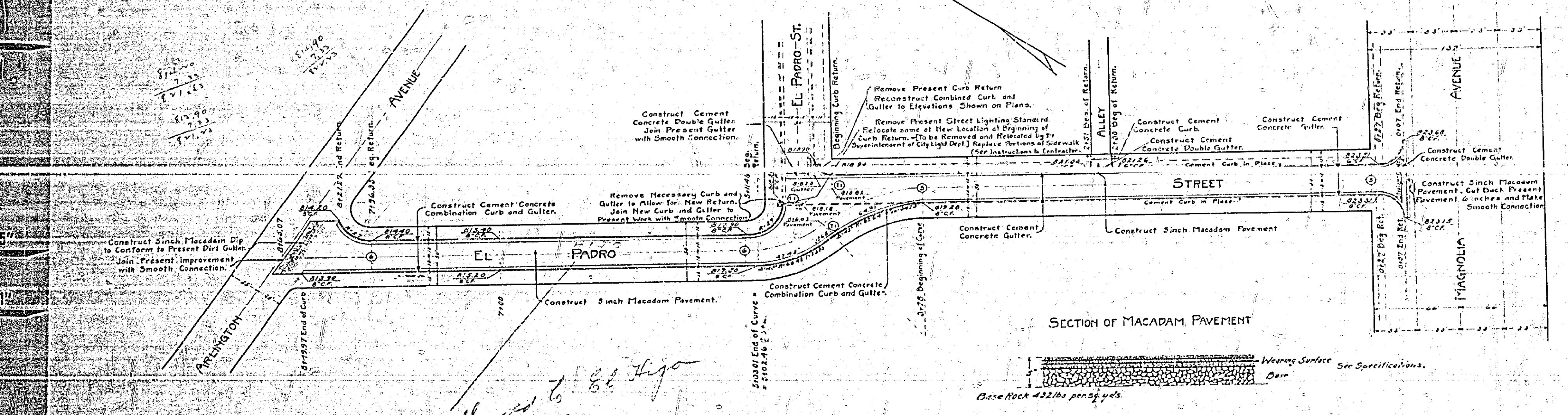
TYPICAL CROSS SECTIONS
Scale 1 in. = 10 ft.



PROFILE



PLAN



8.5'
11'
17'