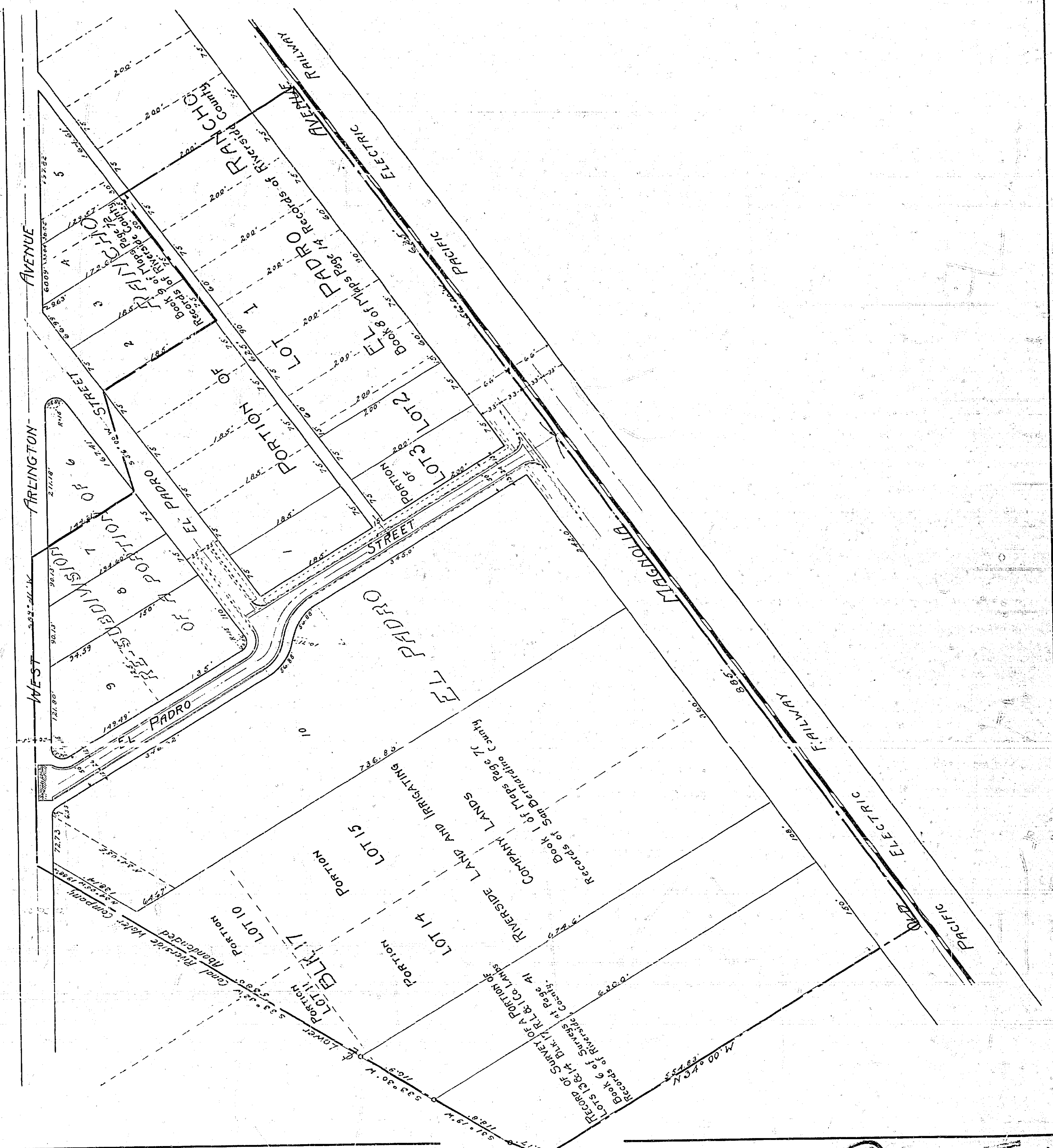


MAP SHOWING THE EXTENT OF THE TERRITORY TO BE INCLUDED IN THE DISTRICT TO BE ASSESSED FOR THE IMPROVEMENT OF EL PADRO STREET DESCRIBED IN RESOLUTION OF INTENTION NO. NEW SERIES OF THE COMMON COUNCIL OF THE CITY OF RIVERSIDE.

District Boundary Shown thus: - - - - -

Scale 1 in = 100ft.



935A 8.51