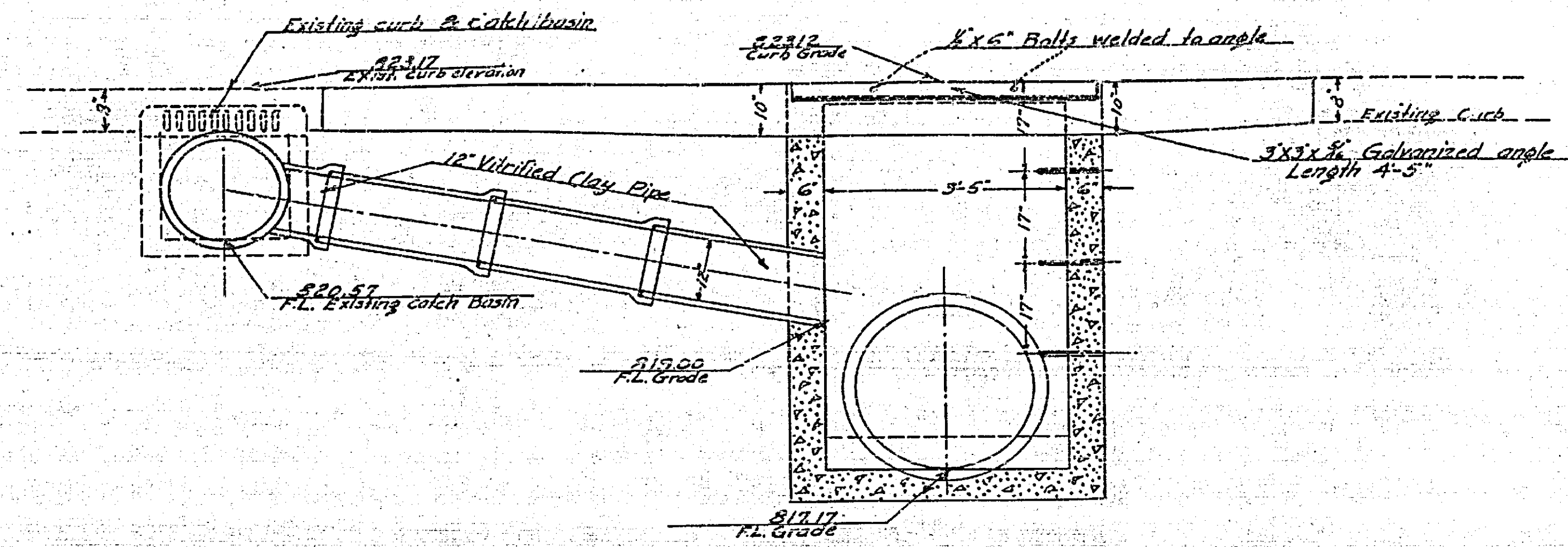


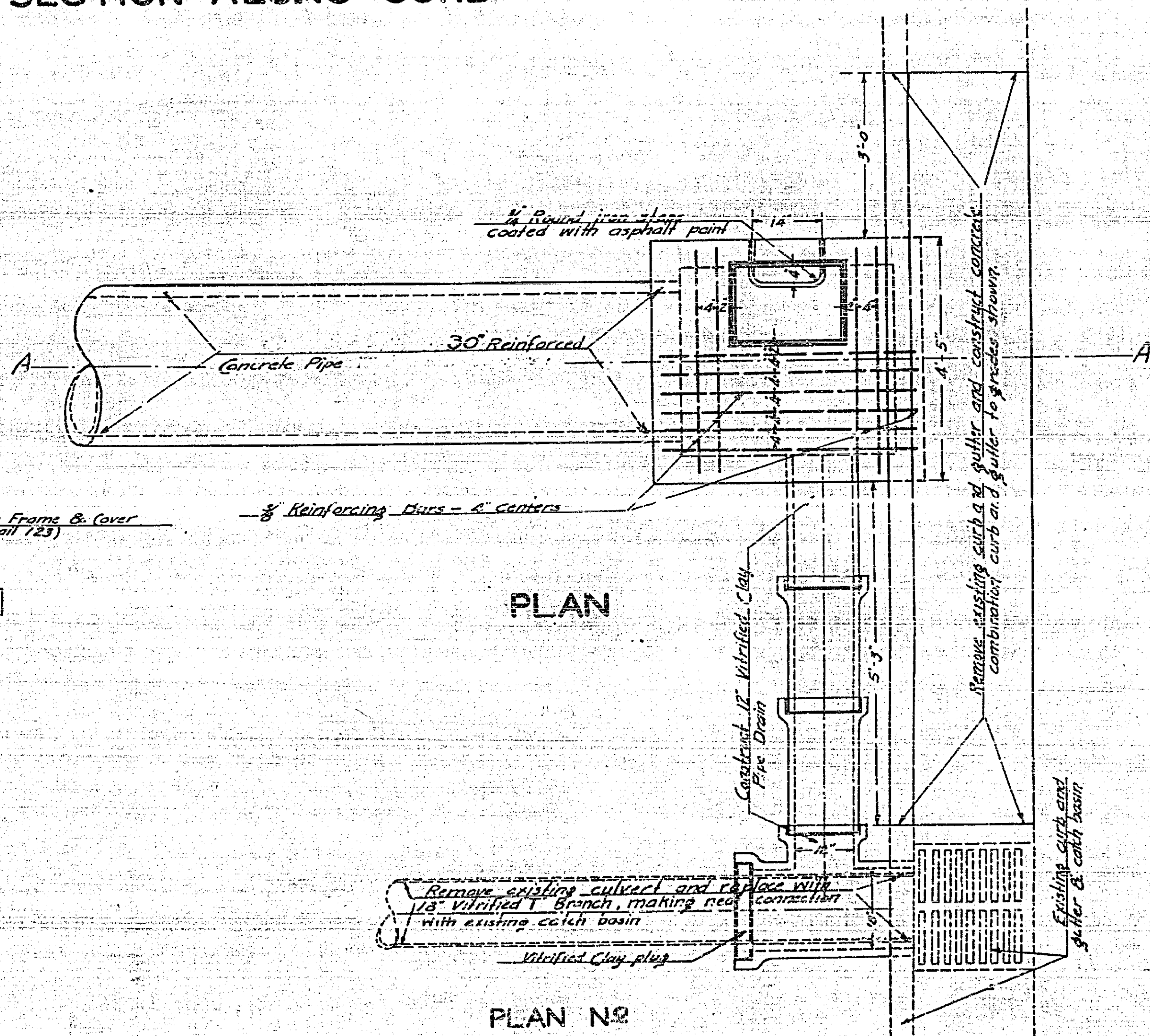
**MISSING**

# DETAIL OF REINFORCED CONCRETE CATCH BASIN AND VITRIFIED CLAY PIPE DRAIN

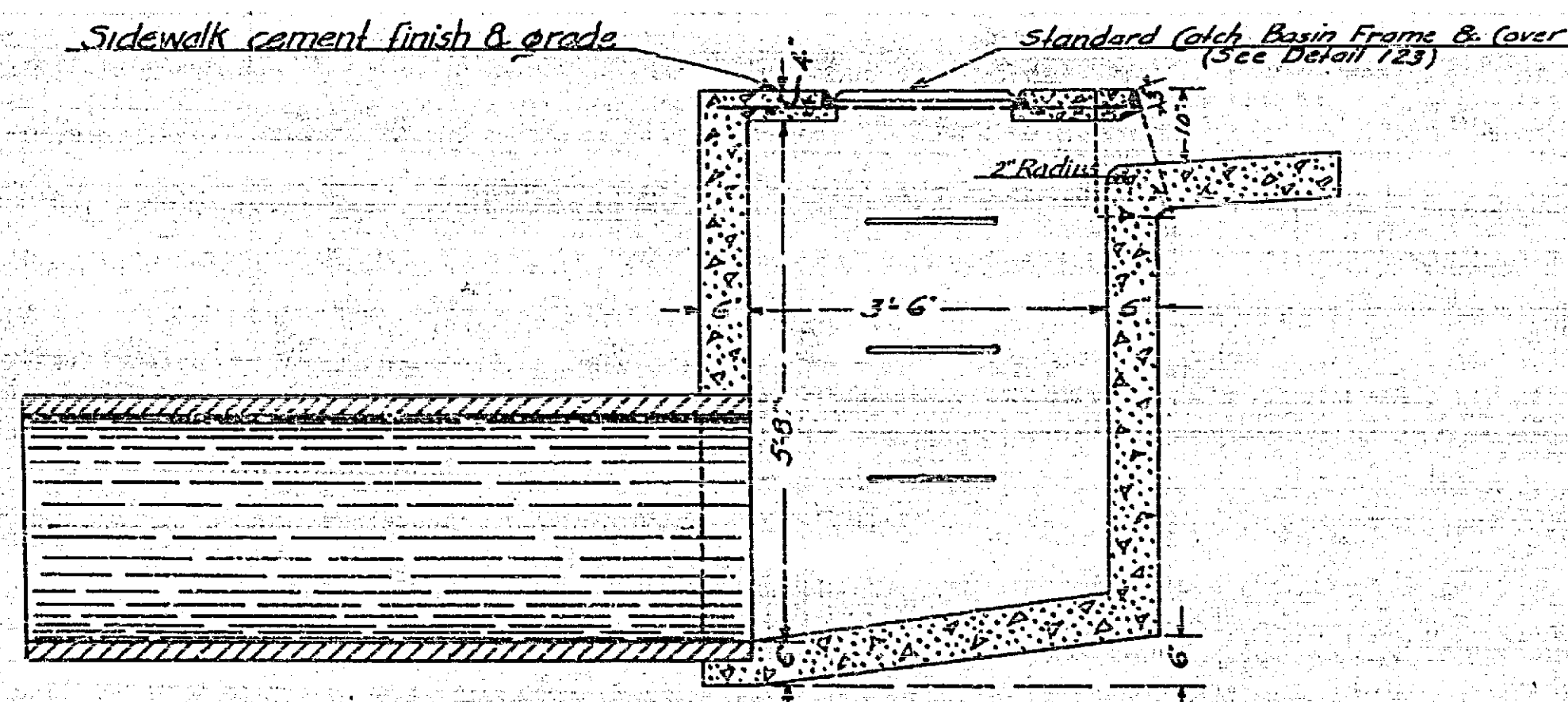
AT INTERSECTION OF BROCKTON AVENUE AND PROPOSED STORM DRAIN  
SCALE 1/2 IN. = 1 FT.



SECTION ALONG CURB



PLAN



SECTION A-A

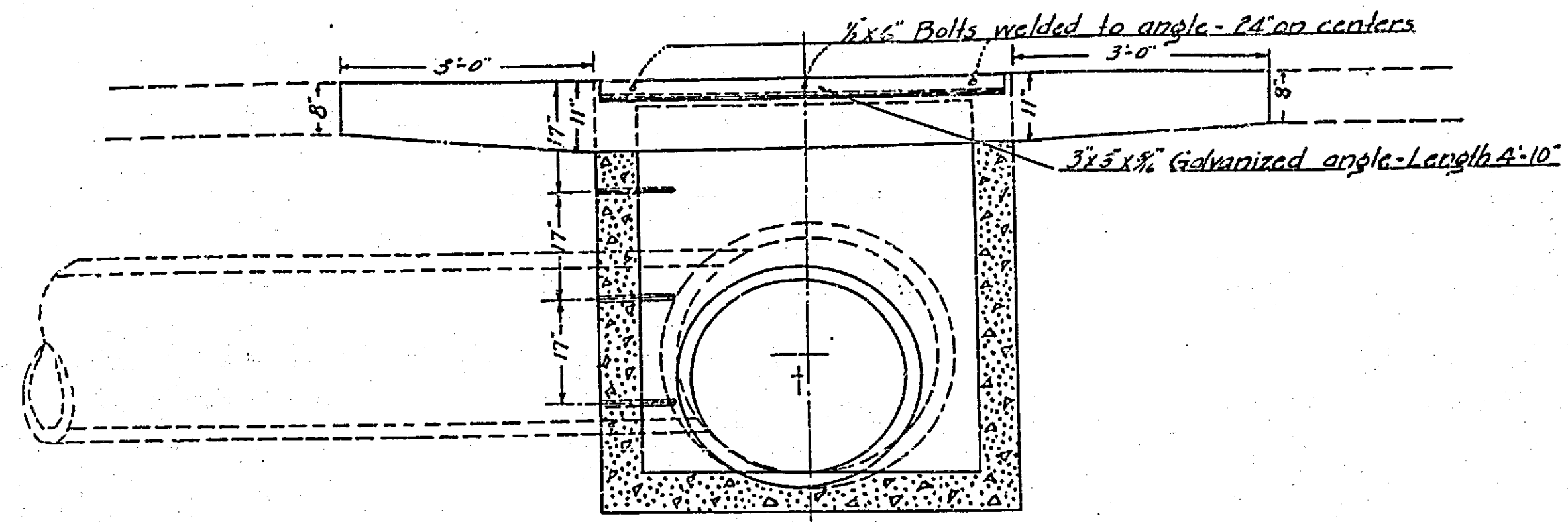
PLAN NO.  
SHEET 2 OF 17 SHEETS

939

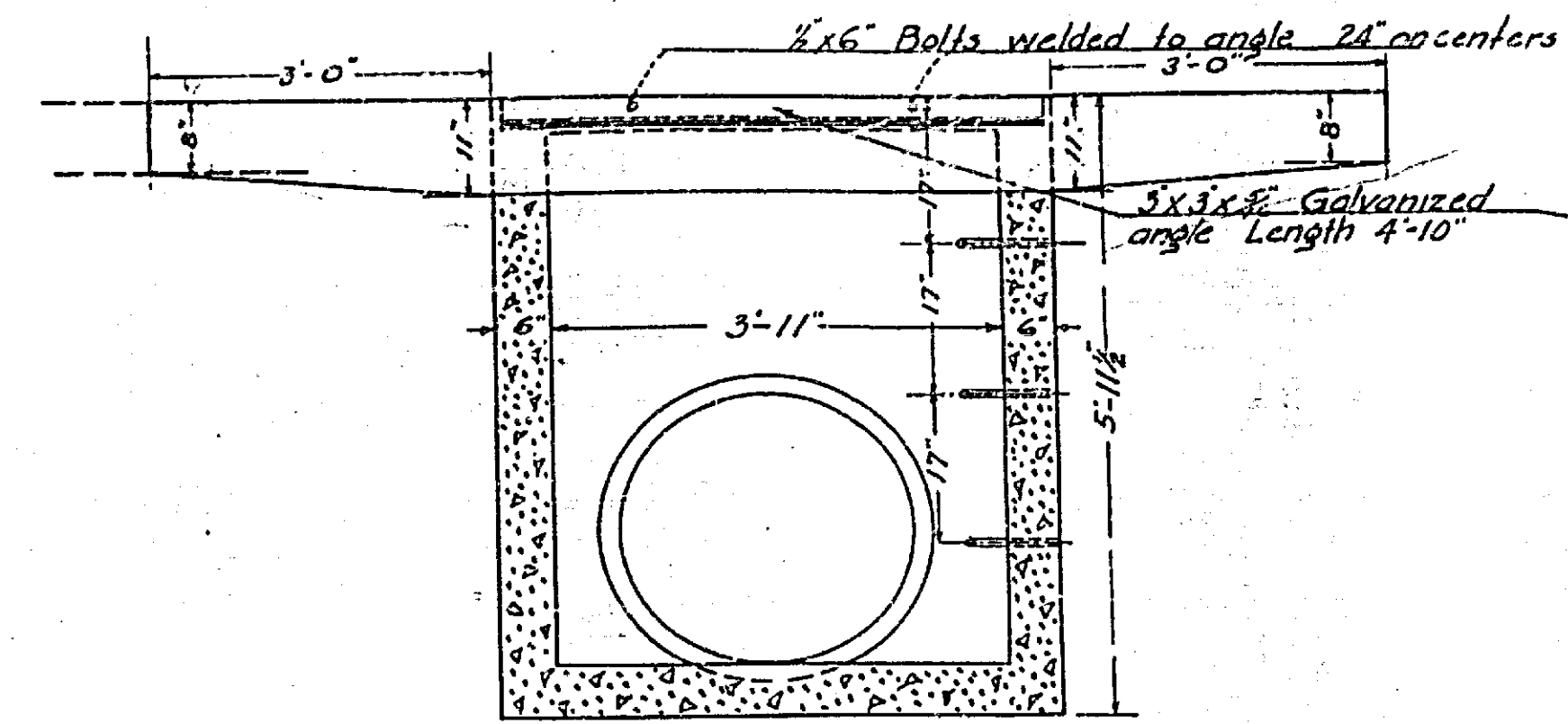
# DETAIL OF REINFORCED CONCRETE CATCH BASINS

INTERSECTION OF MAGNOLIA AVENUE AND PROPOSED STORM DRAIN

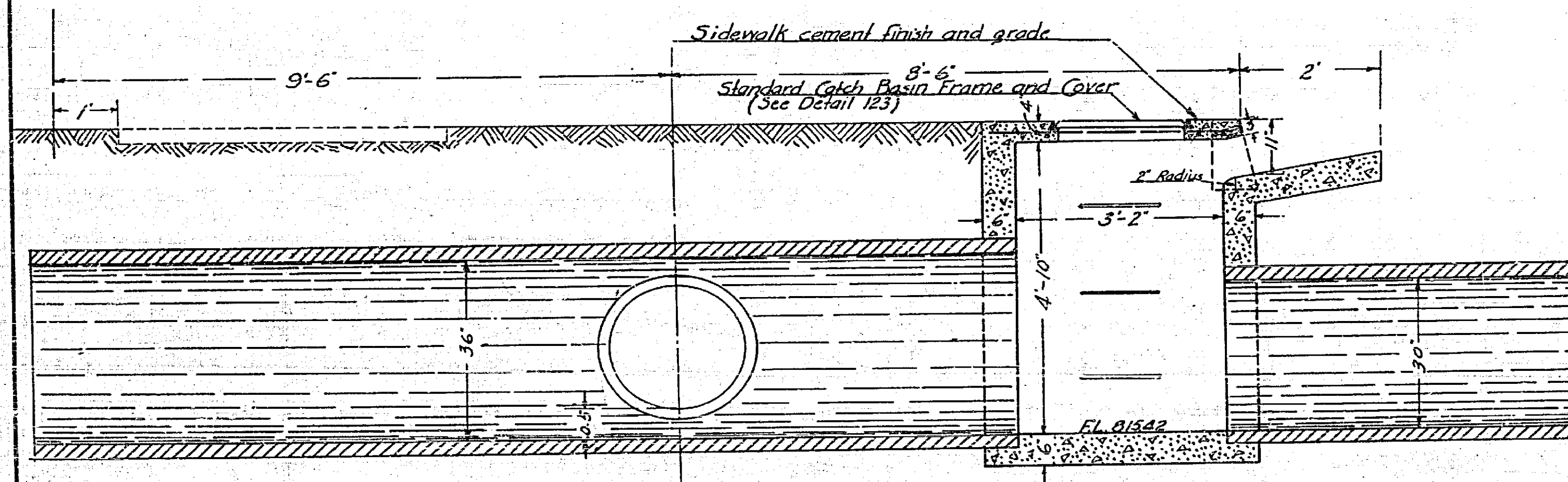
SCALE 1/2 IN. = 1 FT.



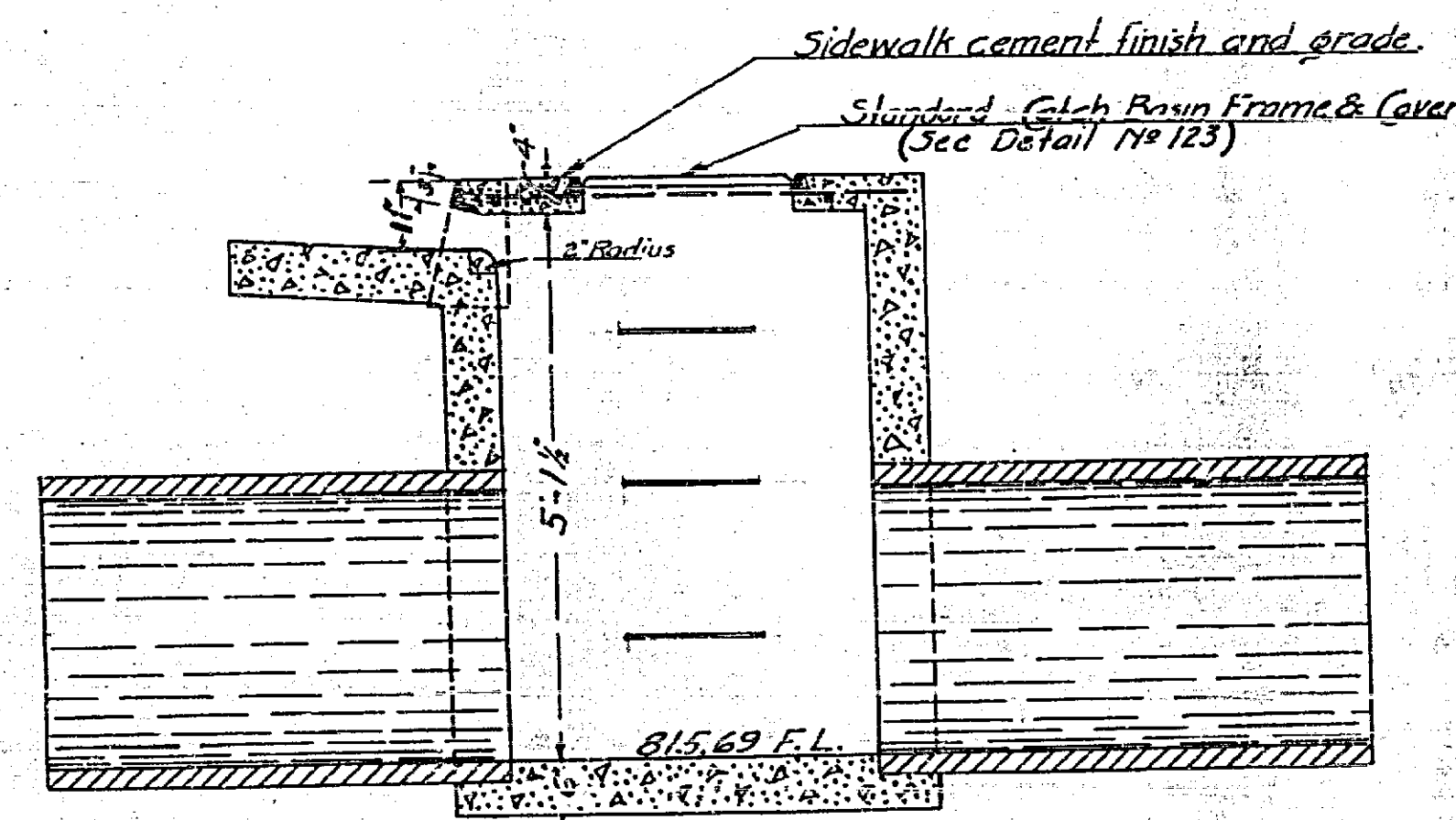
SECTION ALONG CURB



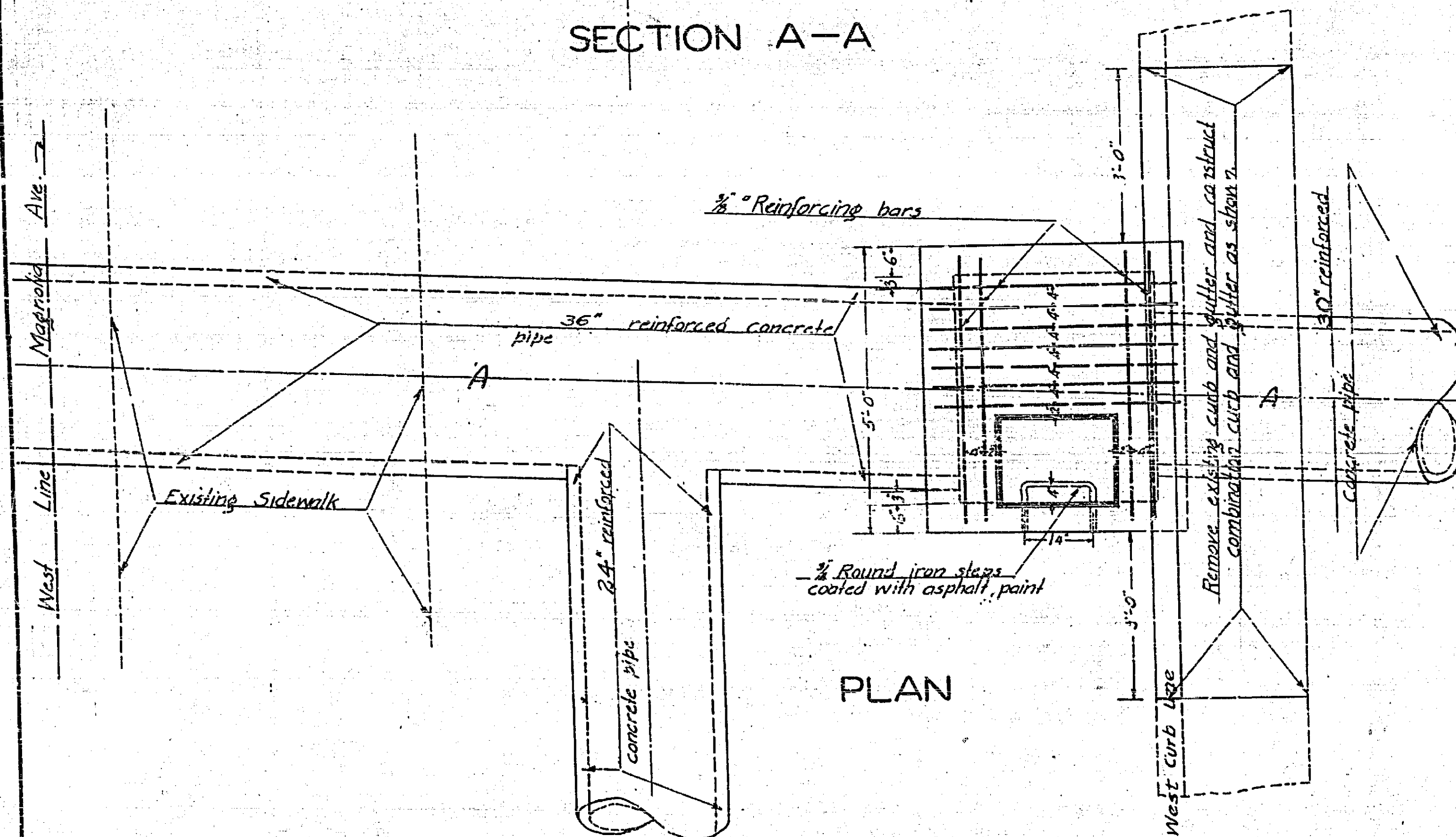
SECTION ALONG CURB



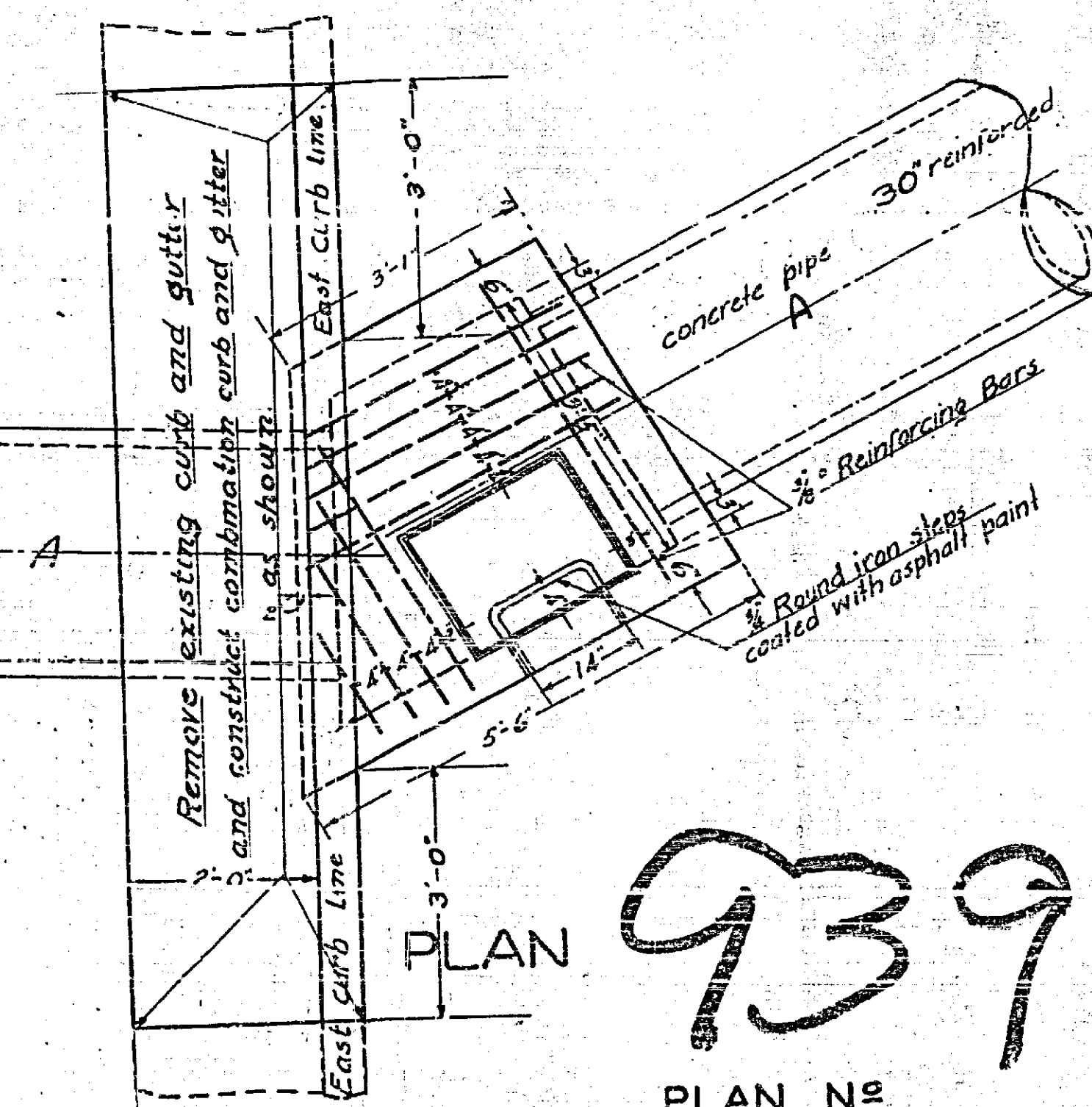
SECTION A-A



SECTION A-A



PLAN



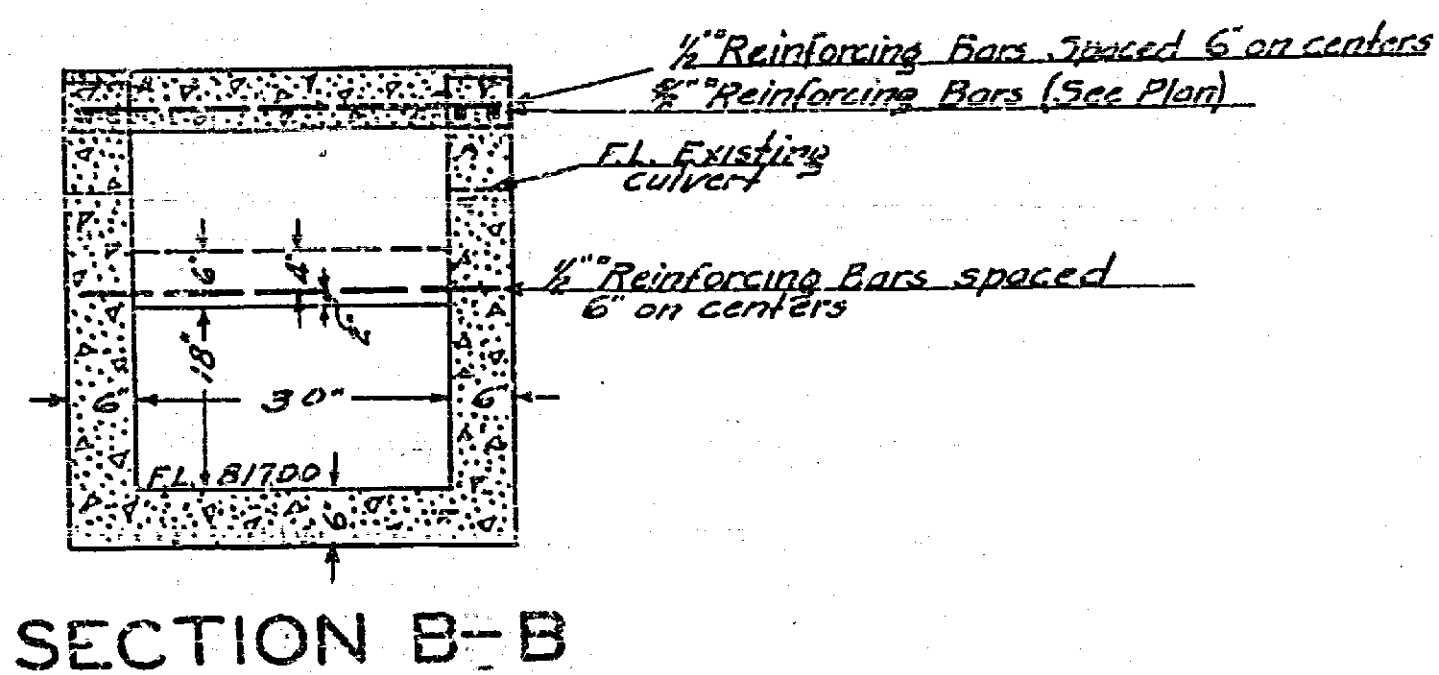
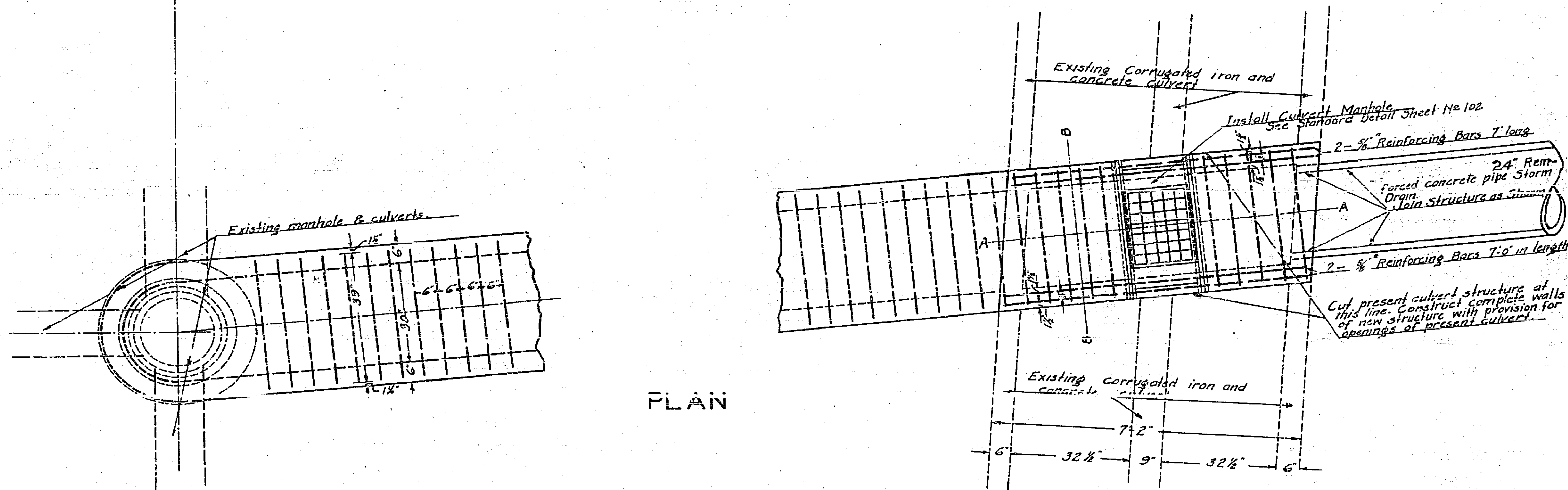
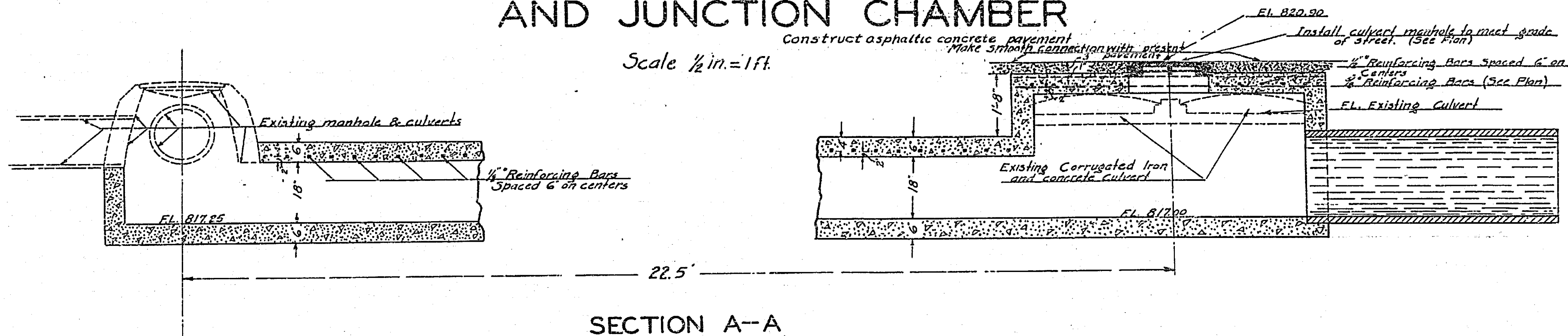
PLAN

939

PLAN No  
SHEET 3 OF 17 SHEETS

# DETAIL OF REINFORCED CONCRETE CULVERT AND JUNCTION CHAMBER

Scale  $\frac{1}{2}$  in. = 1 ft.



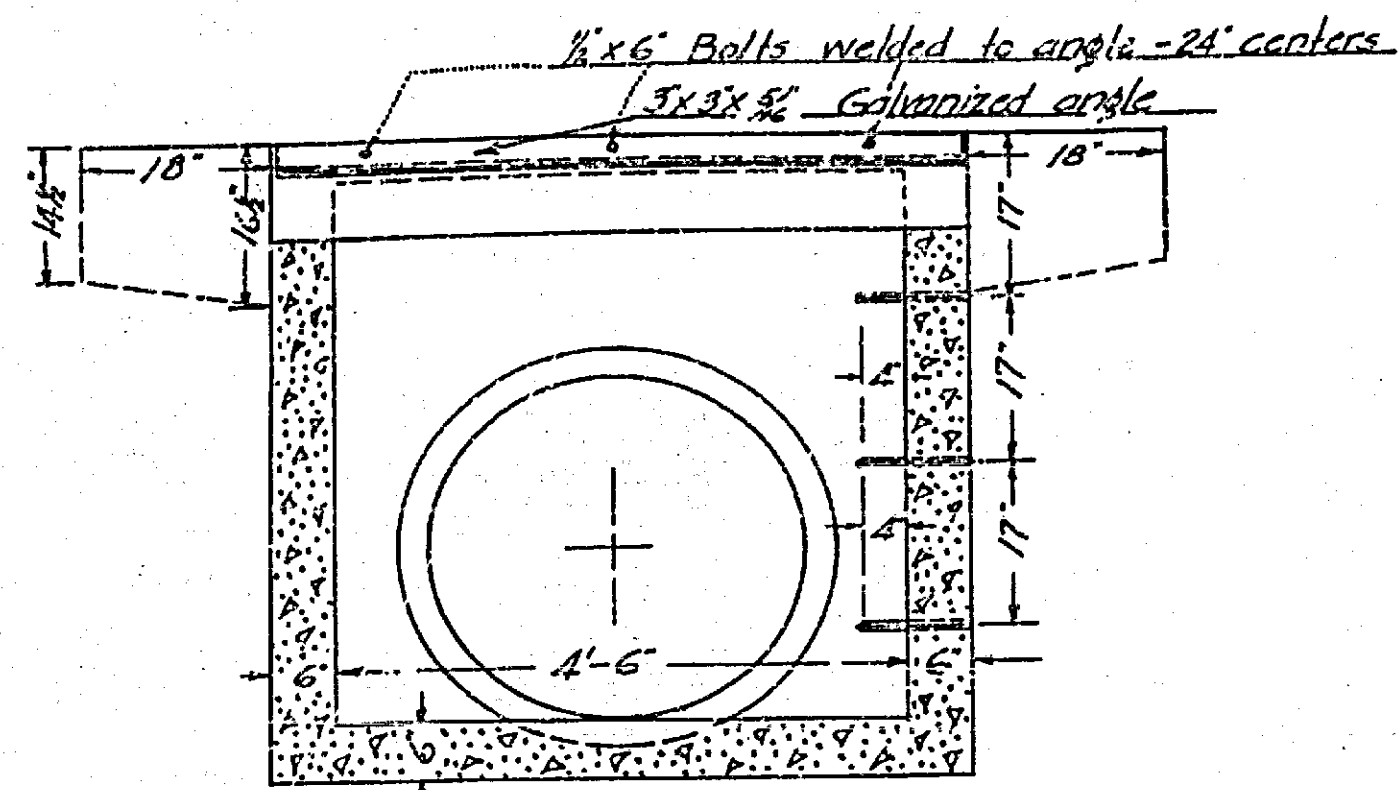
939

PLAN No  
SHEET 4 OF 17 SHEETS

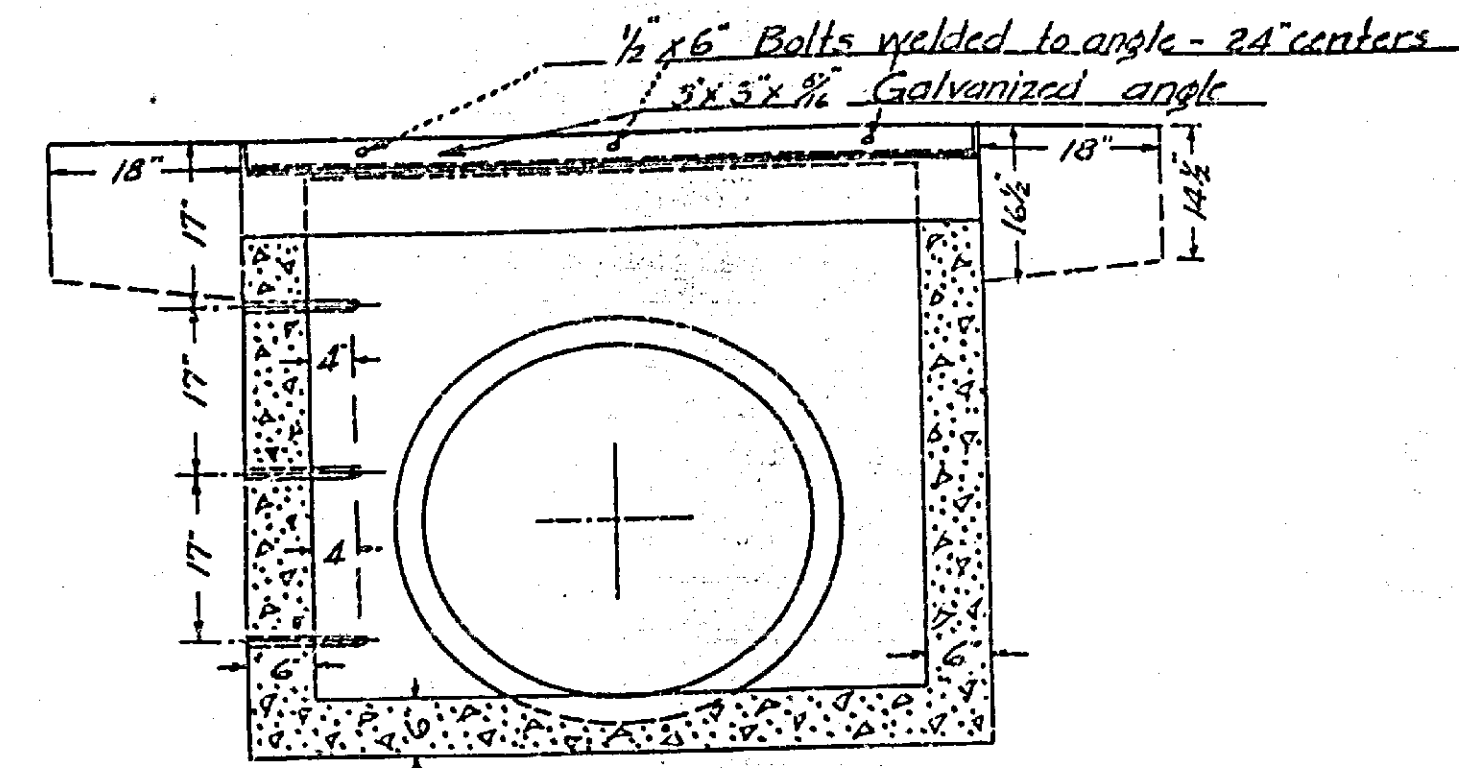
# DETAIL OF REINFORCED CONCRETE CATCH BASINS

INTERSECTION OF SCHOOL CIRCLE AND PROPOSED STORM DRAIN

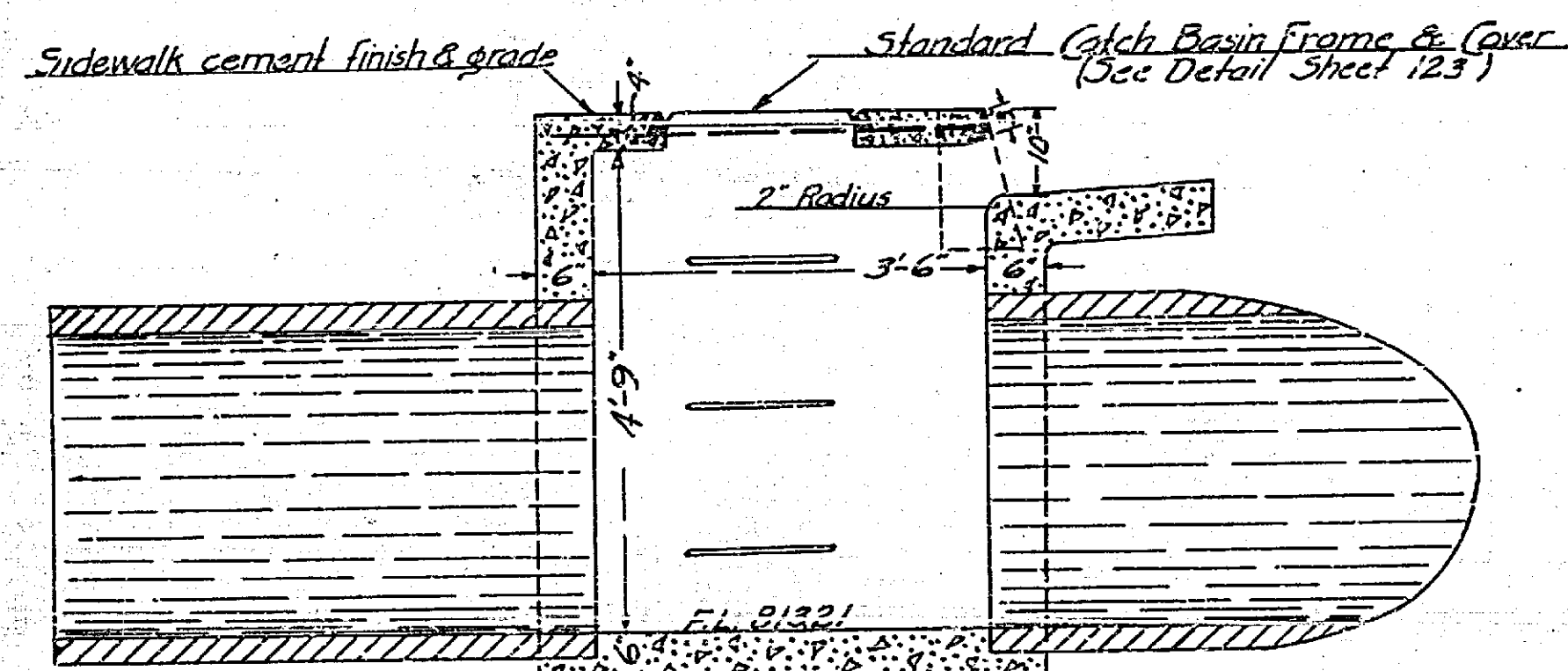
SCALE 1/2 IN. = 1 FT.



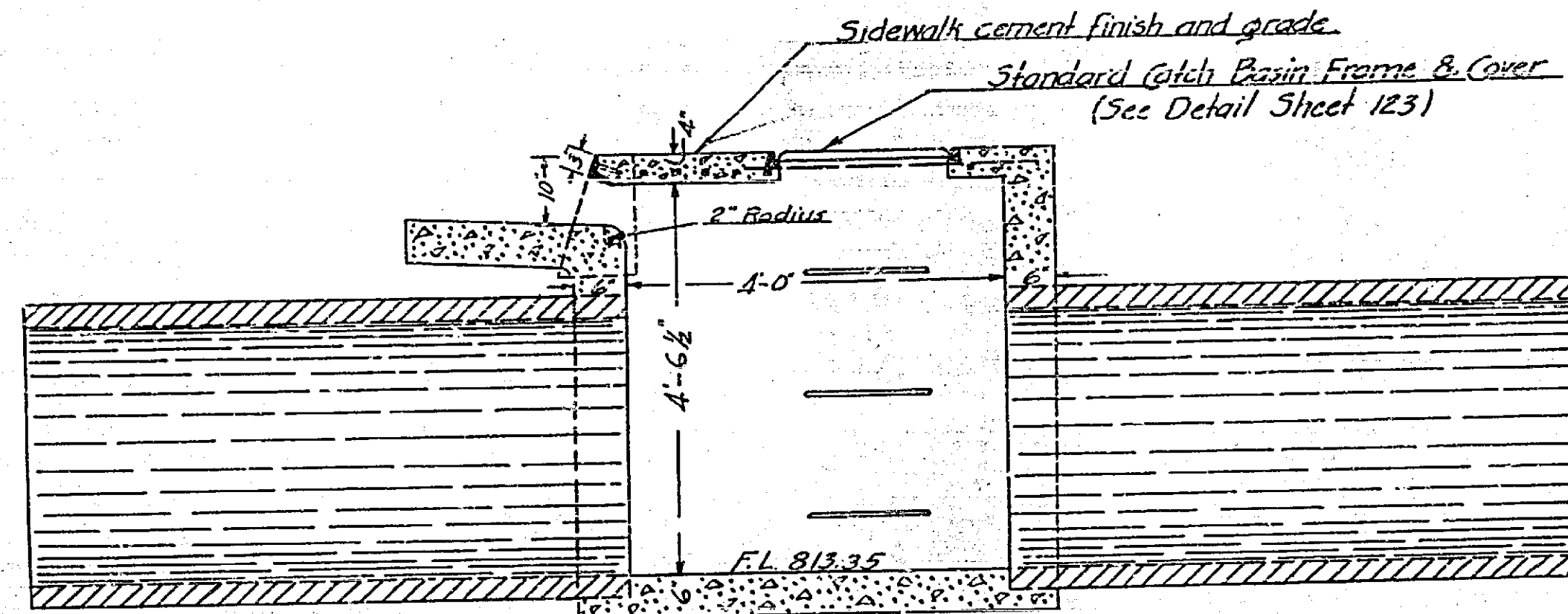
SECTION ALONG CURB



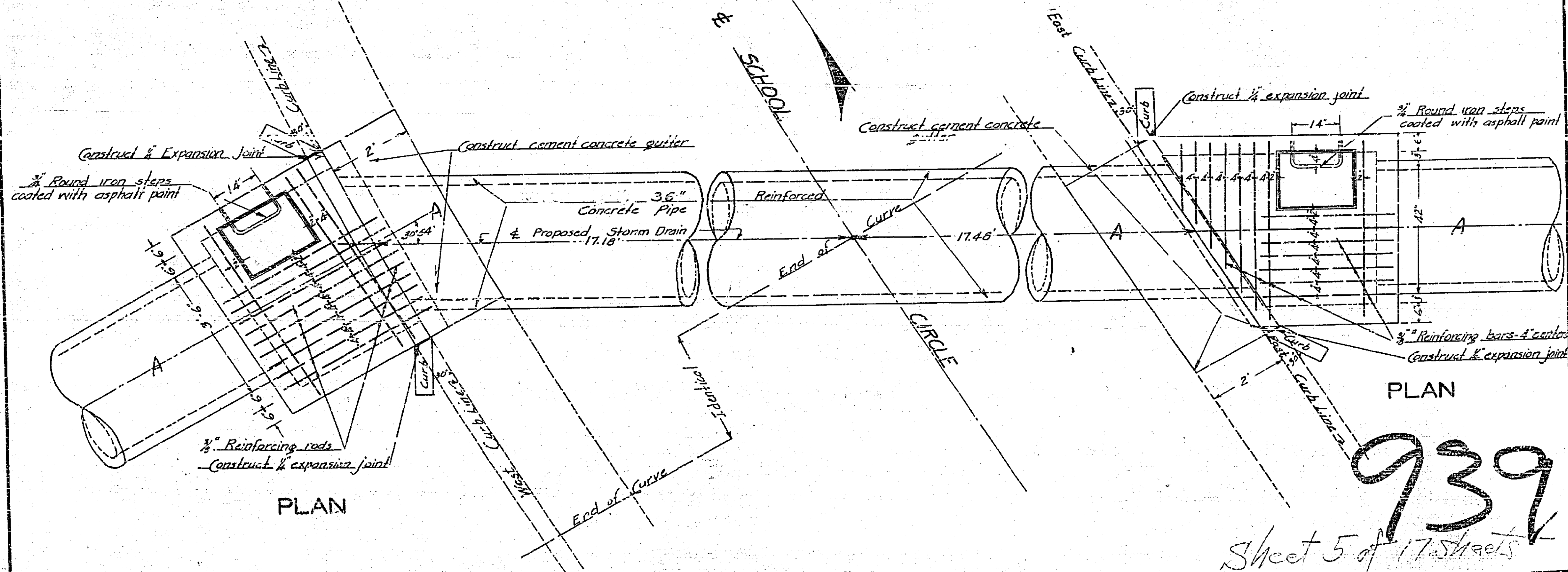
SECTION ALONG CURB



SECTION A-A



SECTION A-A



PLAN

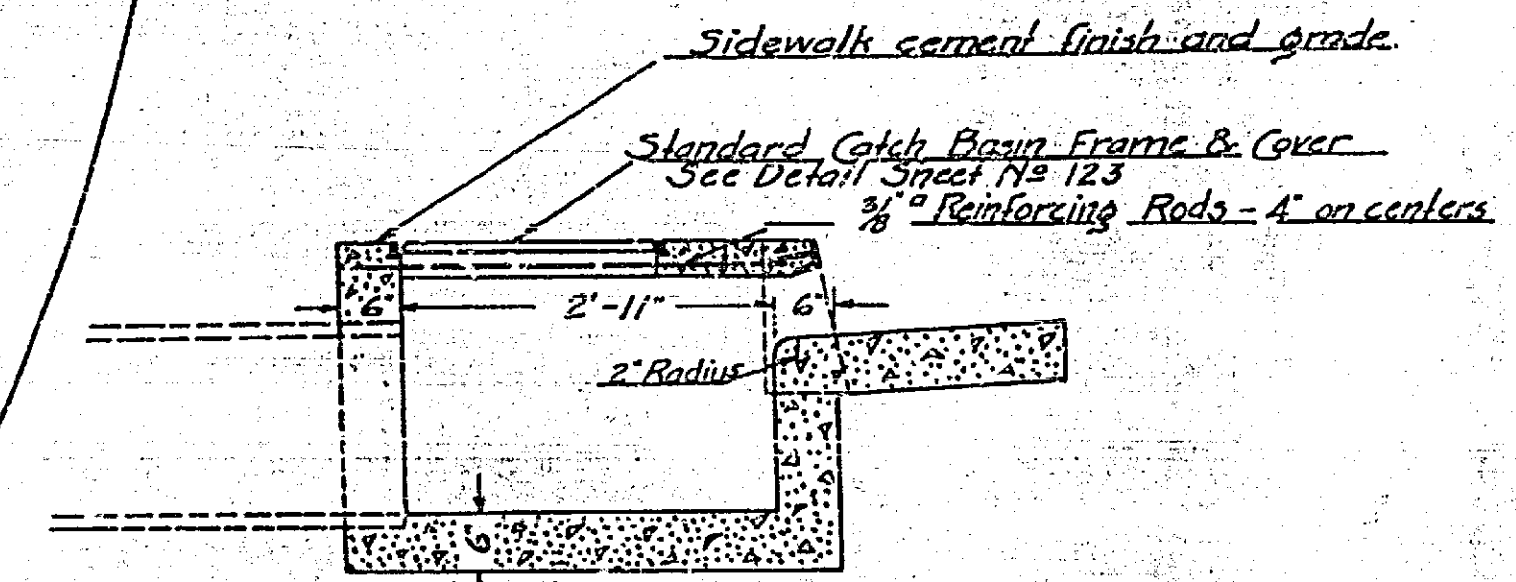
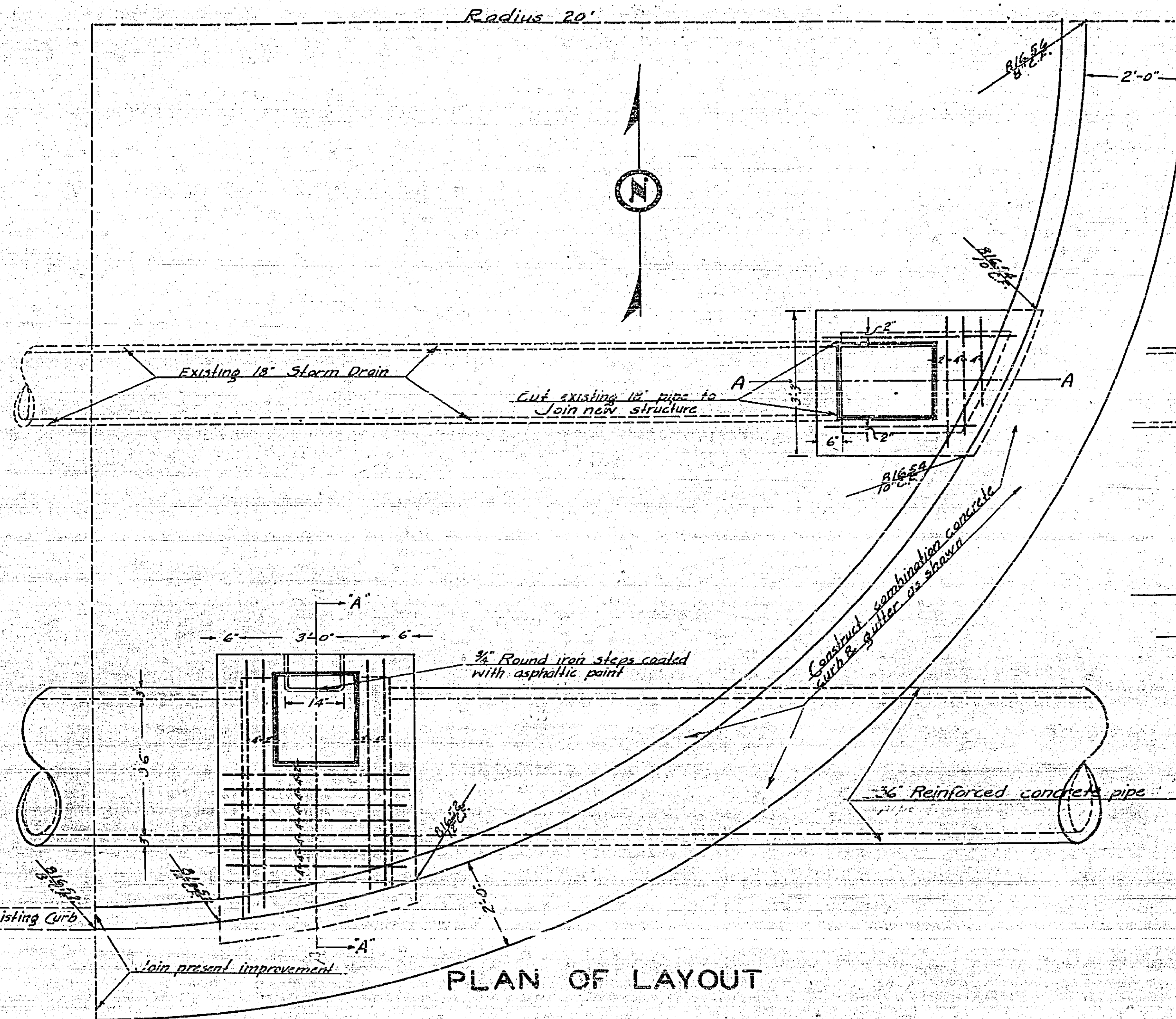
PLAN

939  
Sheet 5 of 17 sheets

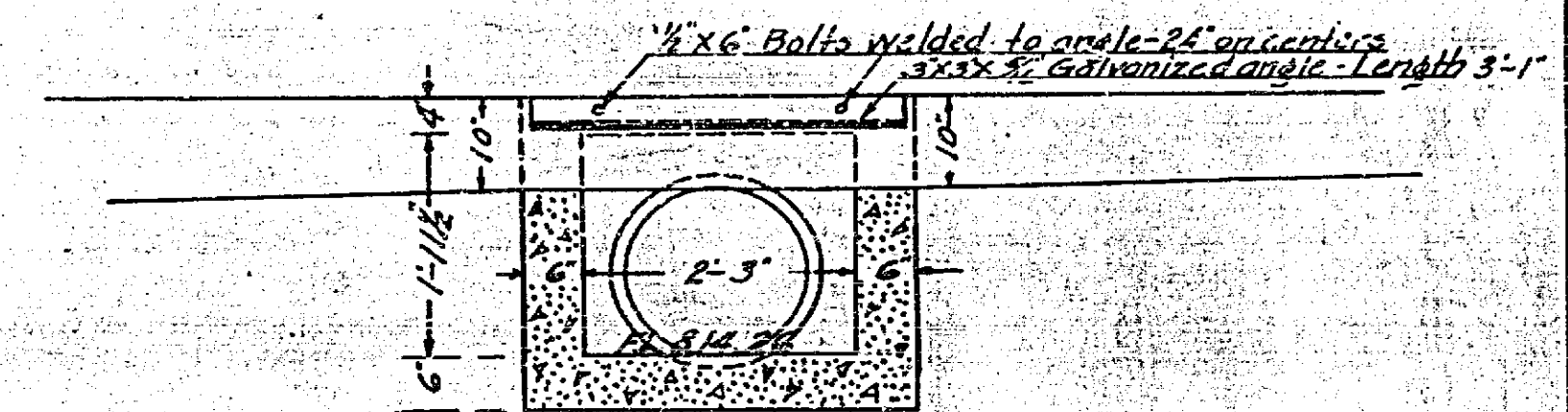
# DETAIL OF REINFORCED CONCRETE CATCH BASINS

AND COMBINATION CURB AND GUTTER AT INTERSECTION OF PALM AVE. AND MARMIAN WAY

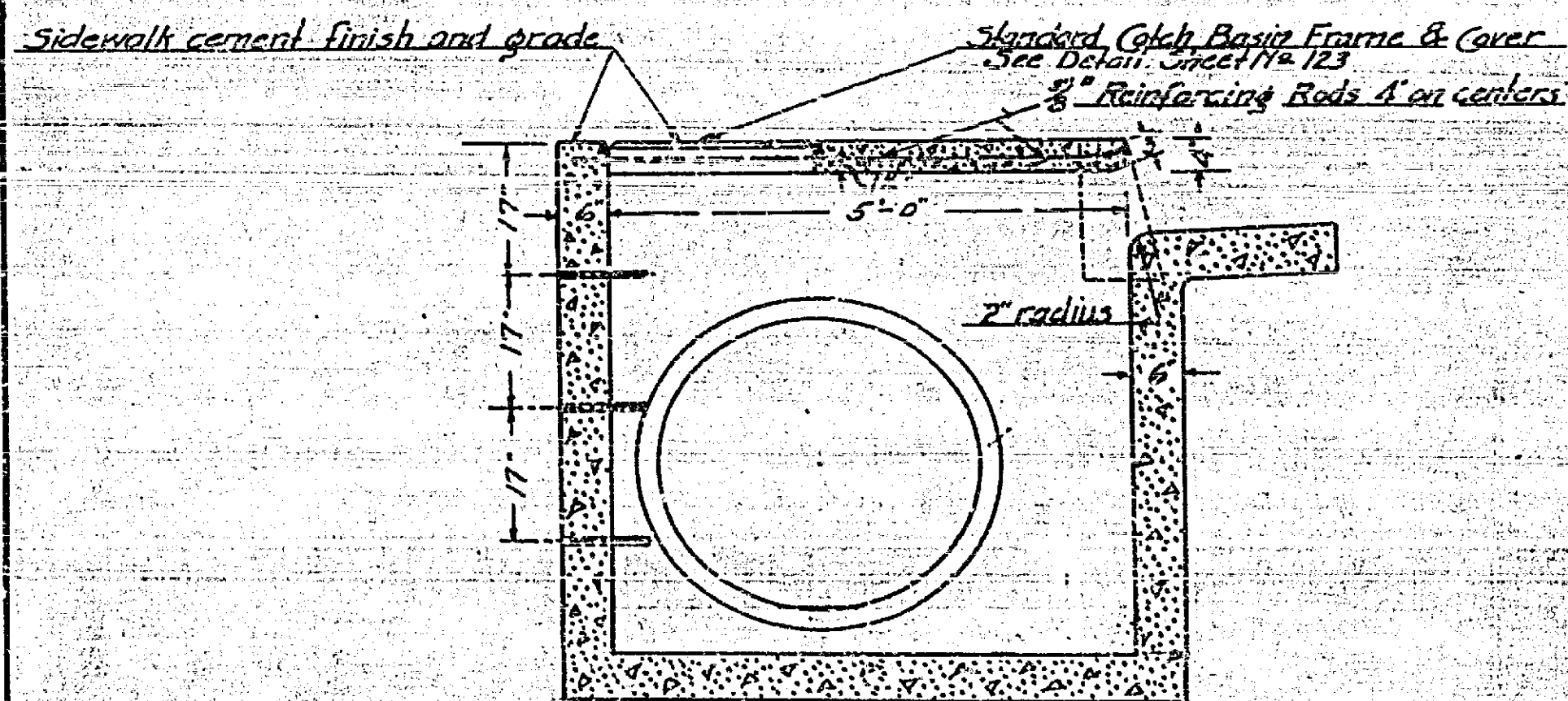
Scale  $\frac{1}{2}'' = 1'$



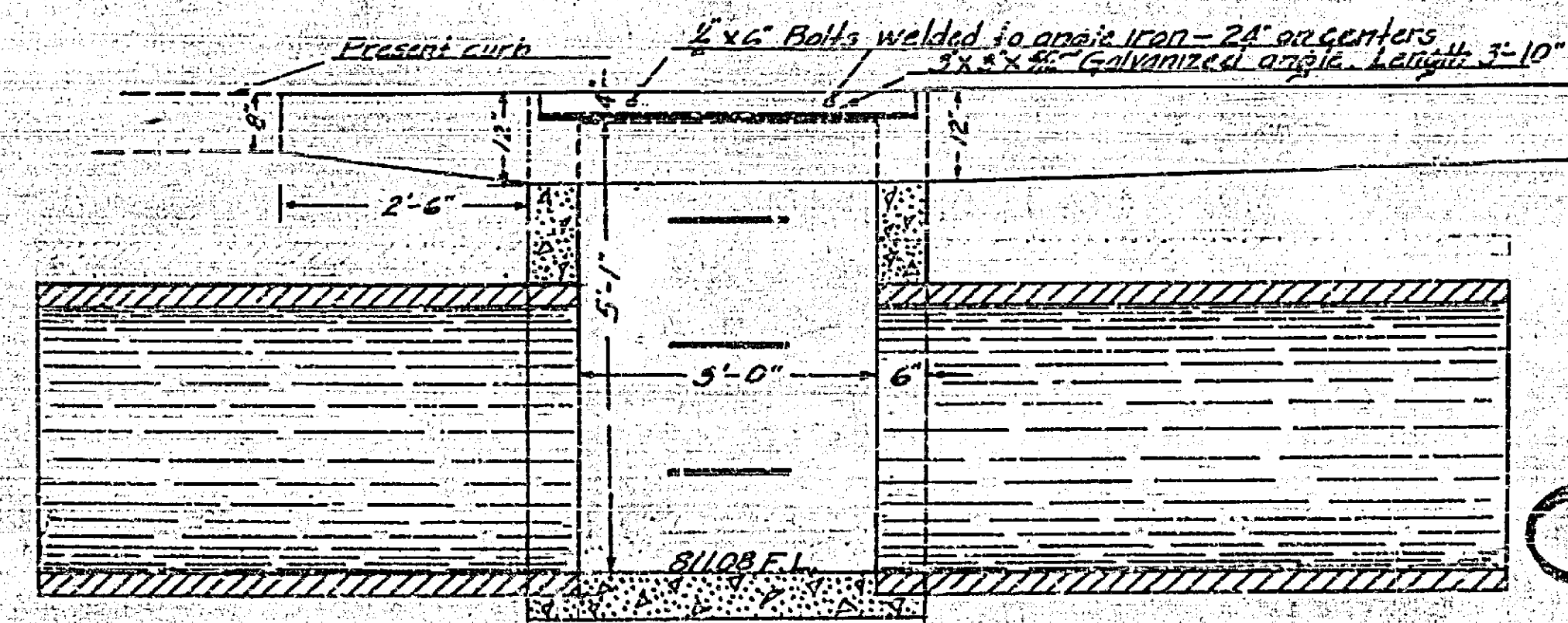
SECTION A-A



SECTION ALONG CURB



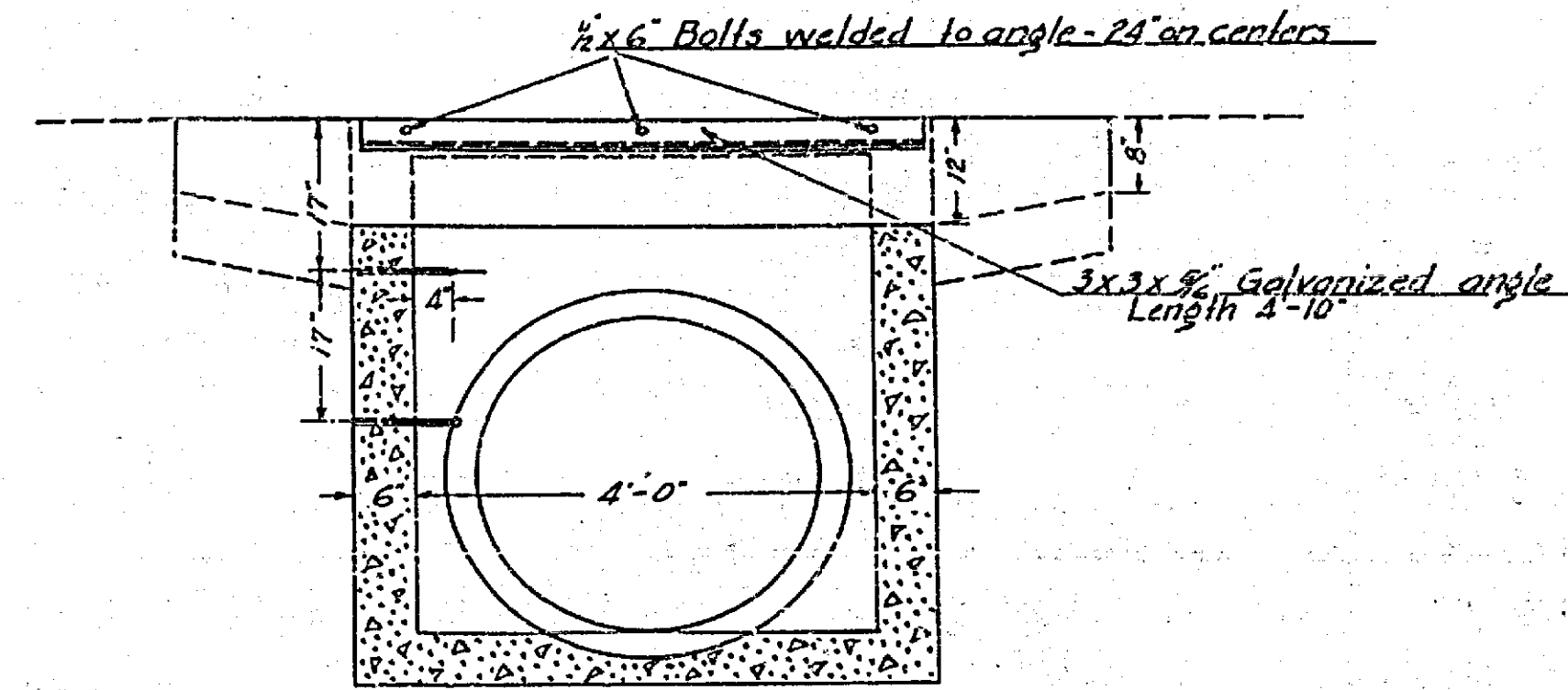
SECTION A-A



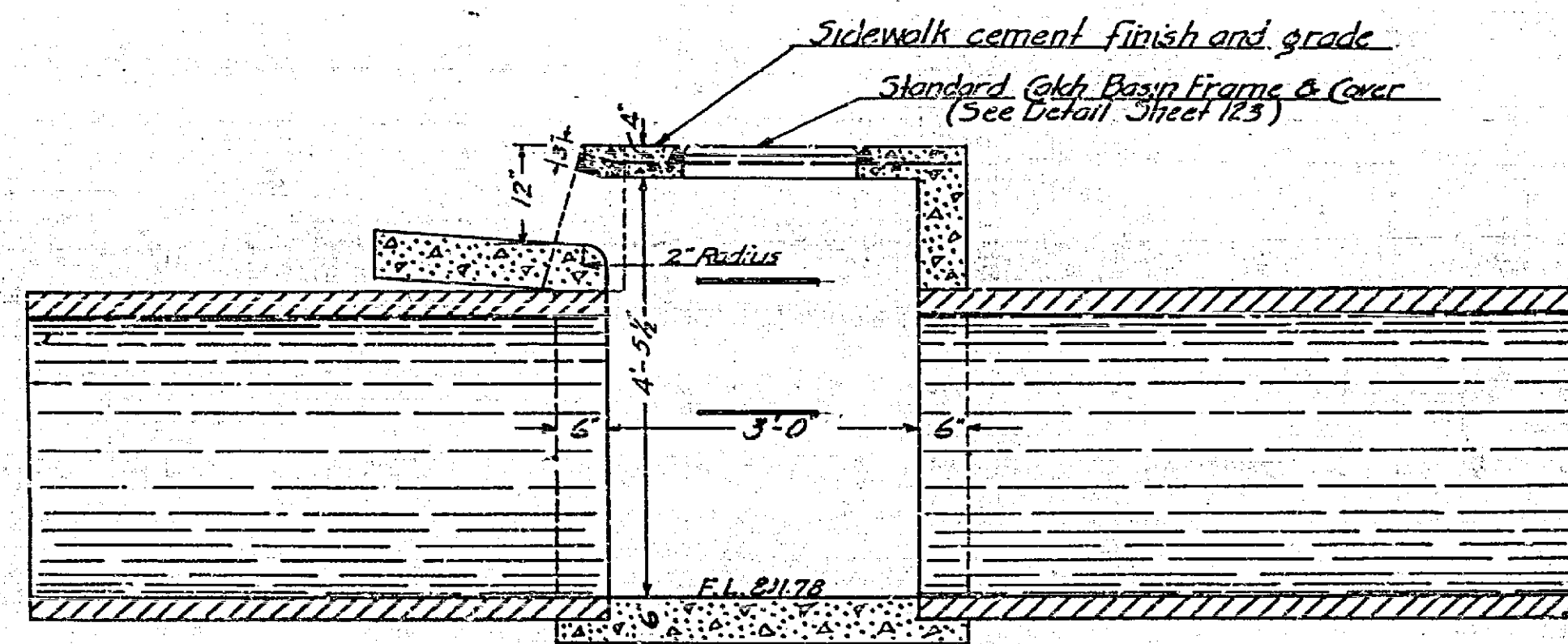
SECTION ALONG CURB

DETAIL OF REINFORCED CONCRETE CATCH  
BASIN AT INTERSECTION OF EAST CURB LINE  
OF PALM AVENUE AND PROPOSED STORM DRAIN

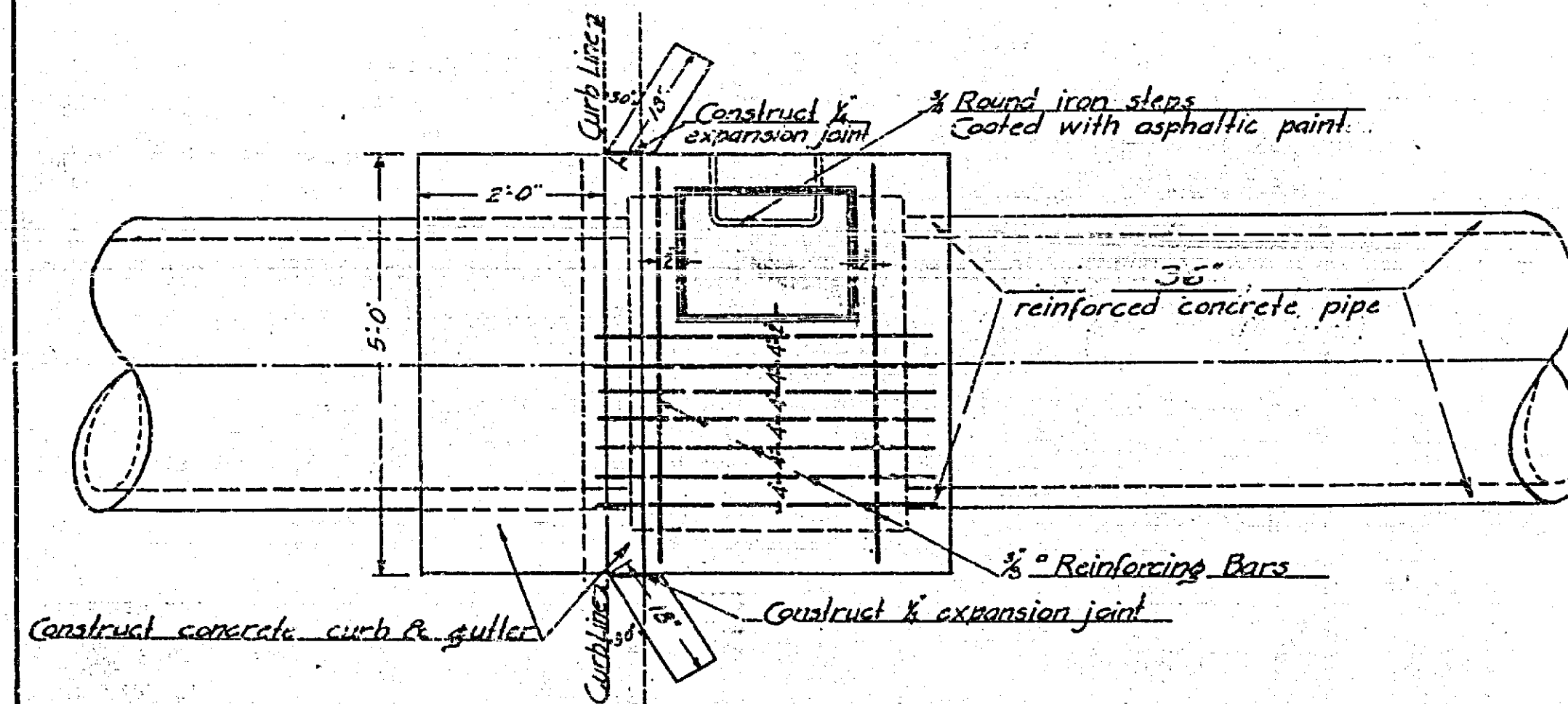
SCALE 1/2 IN. = 1 FT.



SECTION ALONG CURB



SECTION A-A



PLAN

PLAN N<sup>o</sup>  
SHEET 7 OF 17 SHEETS

060

939

060

**MISSING**



**MISSING**

**MISSING**

**MISSING**

**MISSING**

**MISSING**

**MISSING**

**MISSING**

**MISSING**



**MISSING**