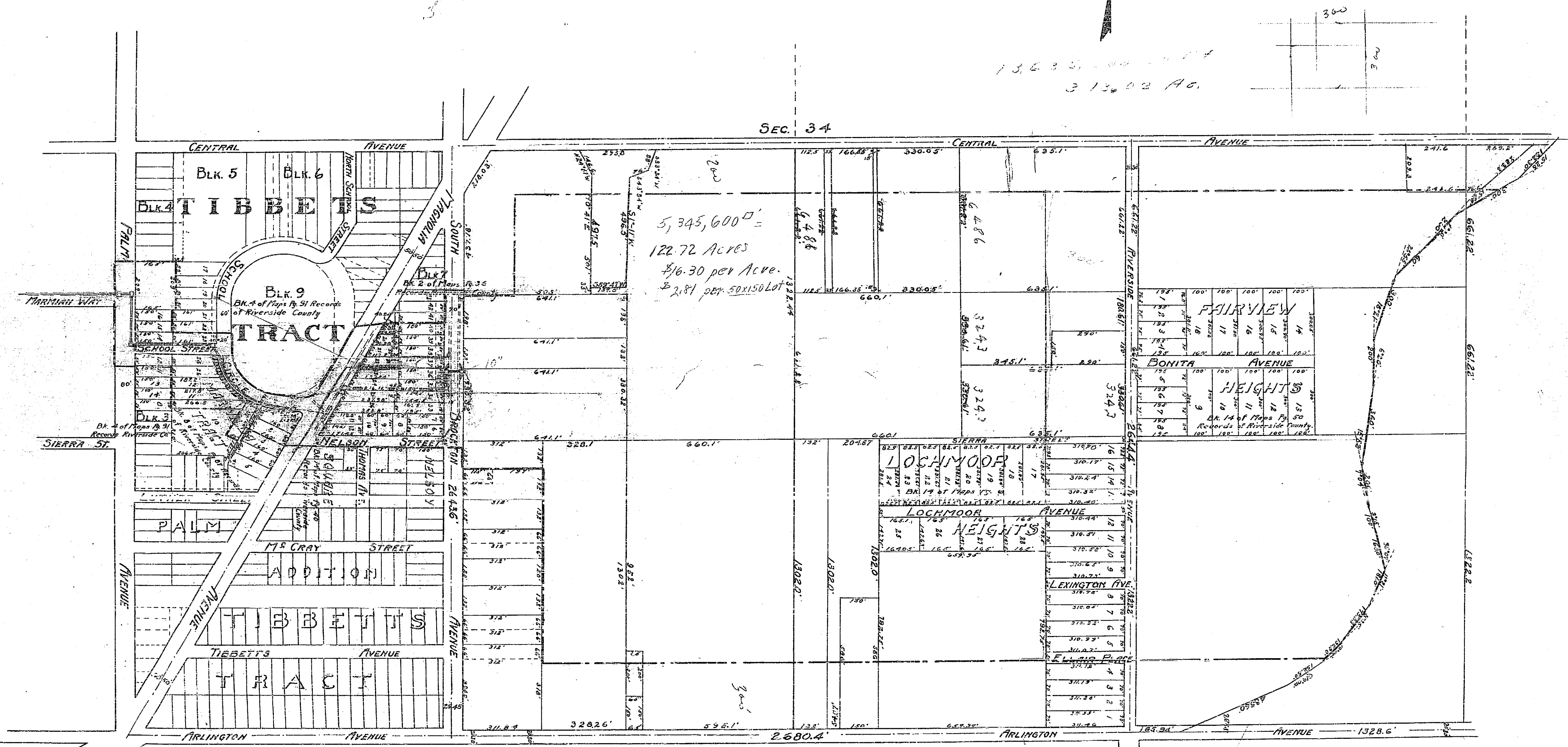


MAP, SHOWING THE EXTENT OF THE TERRITORY TO BE INCLUDED IN THE DISTRICT TO BE ASSESSED FOR THE SCHOOL ST.-MAGNOLIA AVE. STORM DRAIN DESCRIBED IN RESOLUTION OF INTENTION NO. NEW SERIES OF THE COMMON COUNCIL OF THE CITY OF RIVERSIDE

District Boundary Shown thus: —————



939