

PLANS AND PROFILES

OF THE PROPOSED STREET IMPROVEMENT OF

INDIANA AVENUE

BETWEEN MADISON STREET AND ARLINGTON AVENUE AND PORTIONS OF MARY STREET, JANE STREET AND RIVERSIDE AVENUE

ENGINEERING DEPARTMENT, CITY OF RIVERSIDE. OCTOBER 1929

PLANS PROFILES AND MAPS NUMBER 940
CONSISTING OF 12 SHEETS

SHEETS NUMBERED 1, 2, 3 & 4 STREET IMPROVEMENT OF INDIANA AVENUE BETWEEN MADISON STREET AND ARLINGTON AVENUE AND PORTIONS OF MARY STREET, JANE STREET AND RIVERSIDE AVENUE

SHEETS NUMBERED 5, 6, 7 & 8 MAP OF THE DISTRICT TO BE ASSESSED FOR THE IMPROVEMENTS

INSTRUCTIONS TO CONTRACTOR

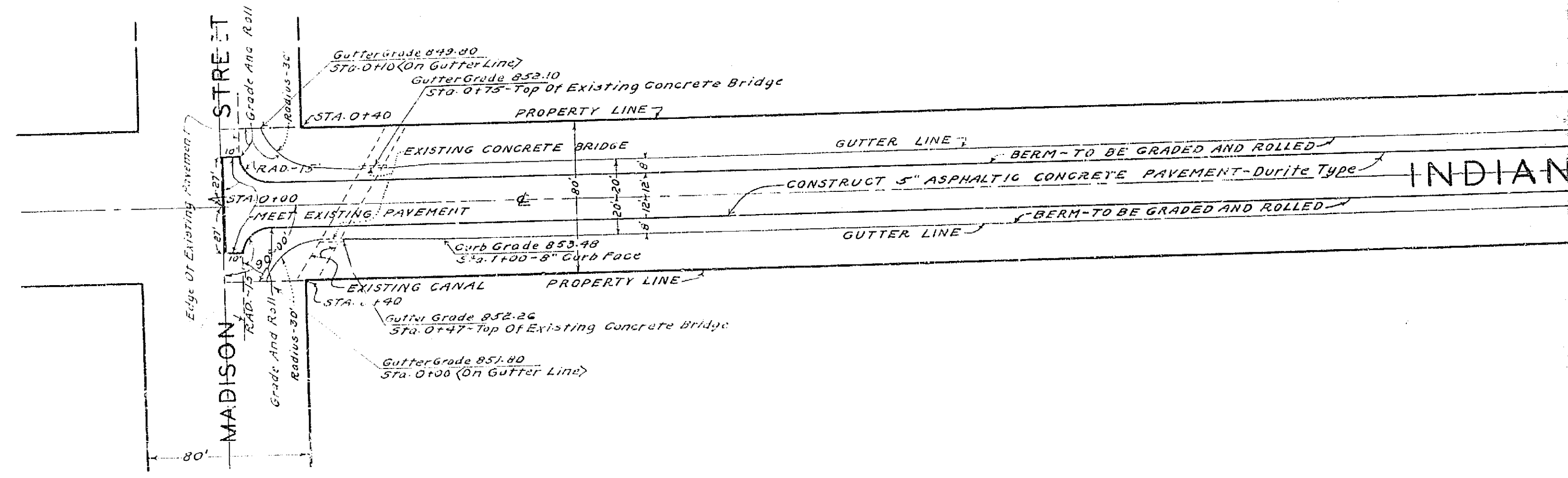
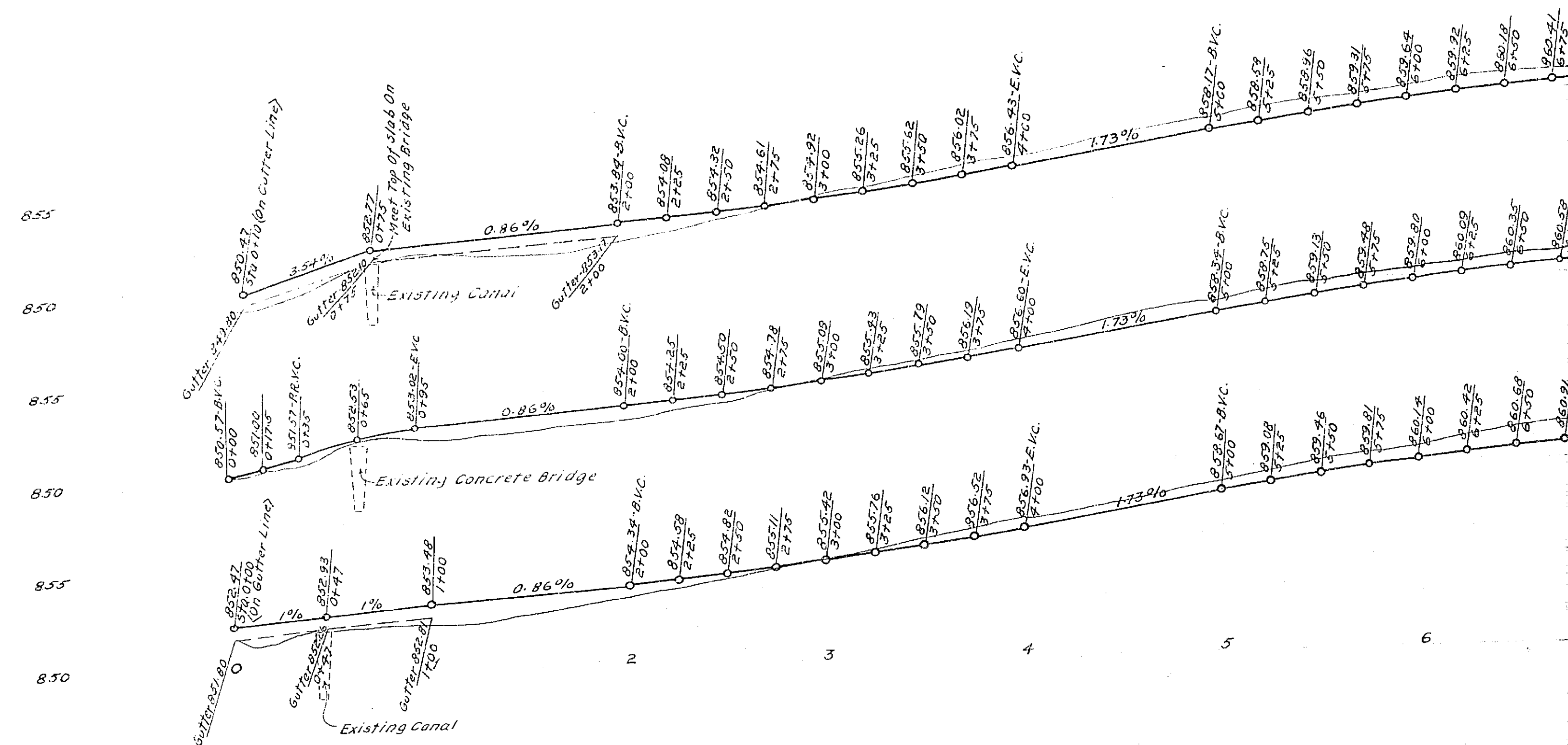
FOLDER CONTAINING INSTRUCTIONS TO CONTRACTOR AND DETAIL PLANS NUMBERED 102, 104, 107 & 123 ARE A PART OF THESE PLANS AND SPECIFICATIONS

FIELD BOOKS

BOOK 200 PAGES 53 TO 58
BOOK 201 PAGES 2 TO 77

ADOPTED BY THE MAYOR AND COUNCIL OF THE CITY OF RIVERSIDE
THIS 5th DAY OF October 1929

Urbel Massey
CITY CLERK, CITY OF RIVERSIDE



PLAN No 940
SHEET No 1 OF 12 SHEETS

LES

NT OF

AVENUE

ERSIDE AVENUE

CTOBER 1929

940

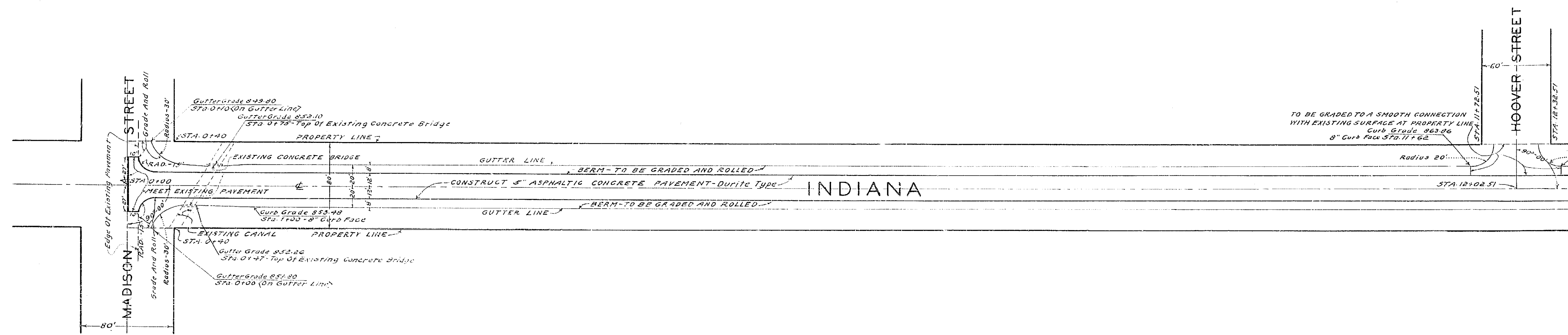
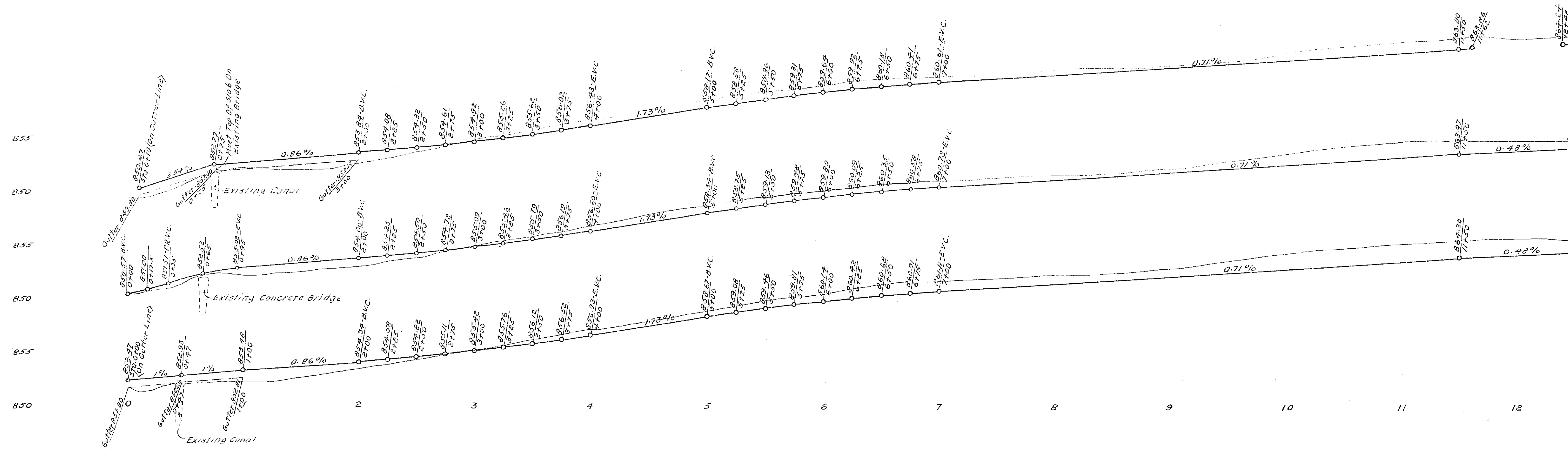
IN MADISON STREET AND
STREET, JANE STREET AND

THE IMPROVEMENTS

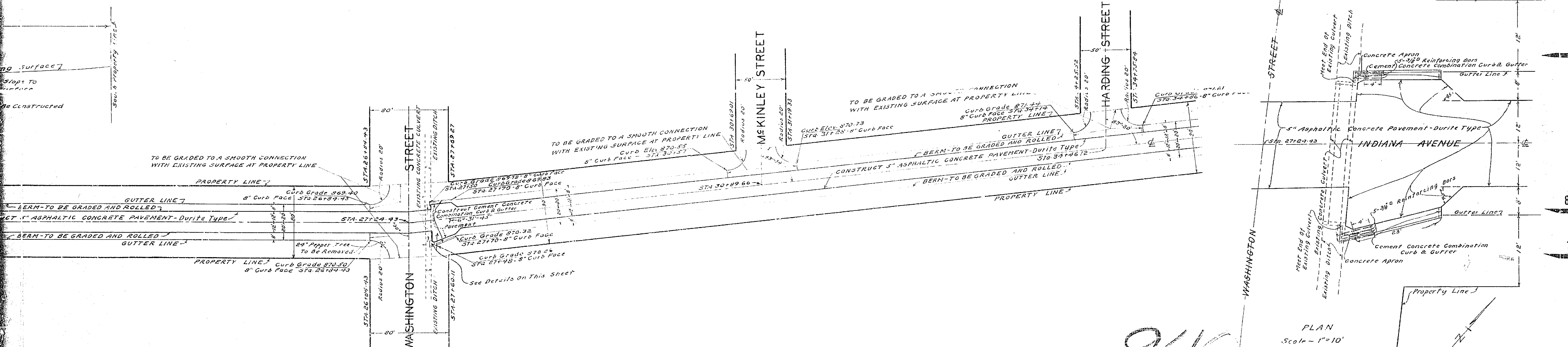
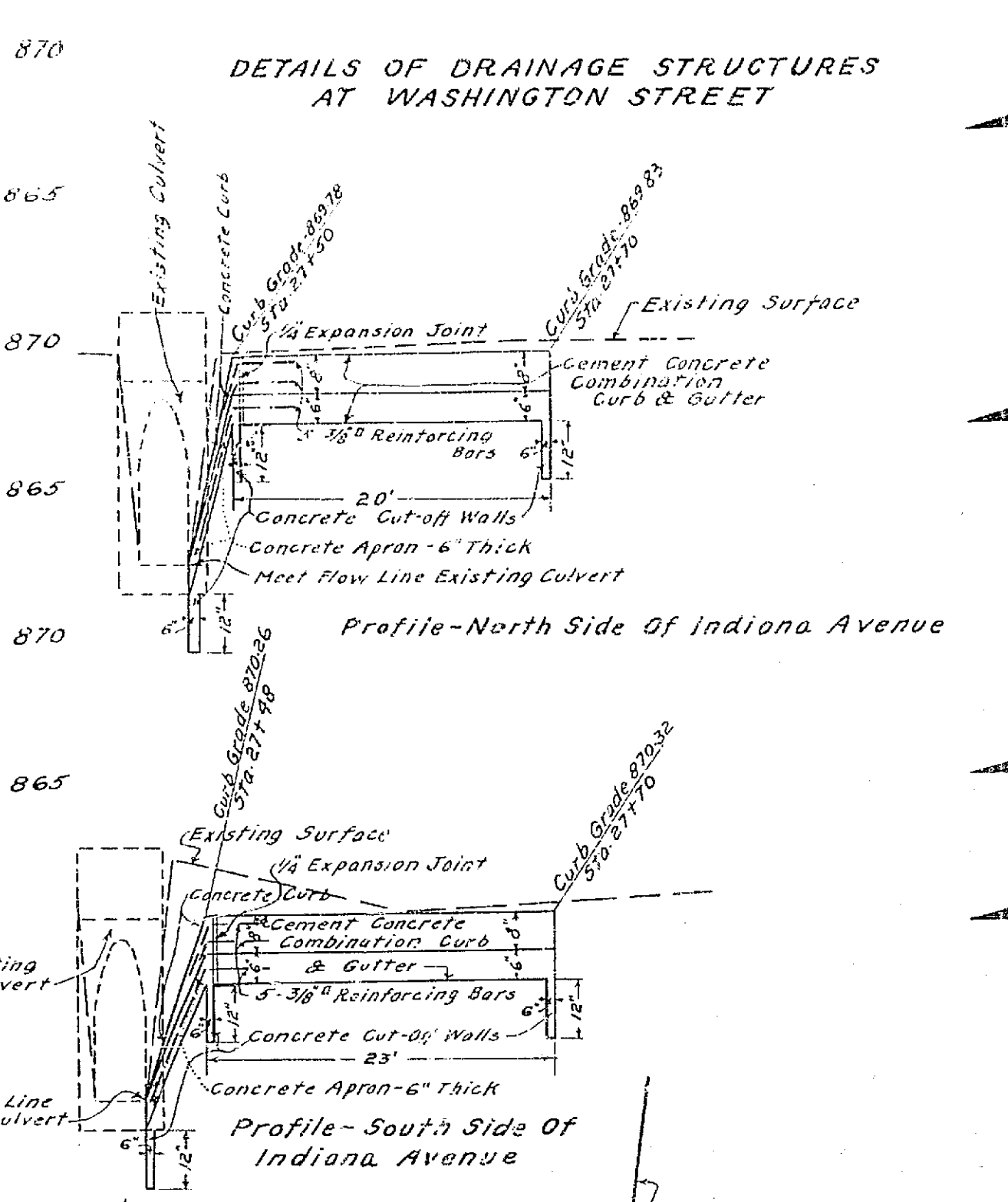
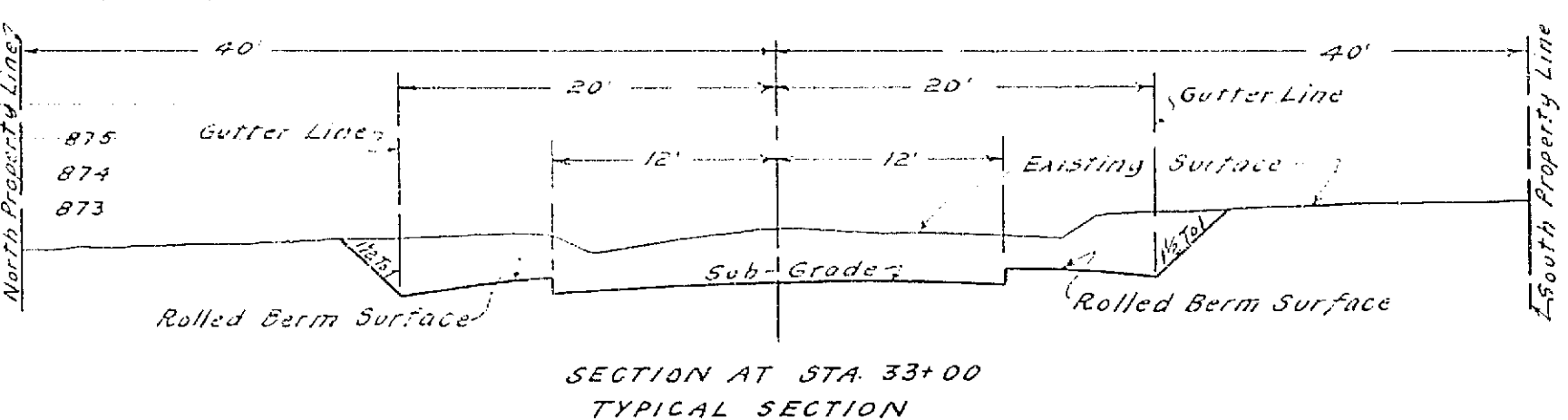
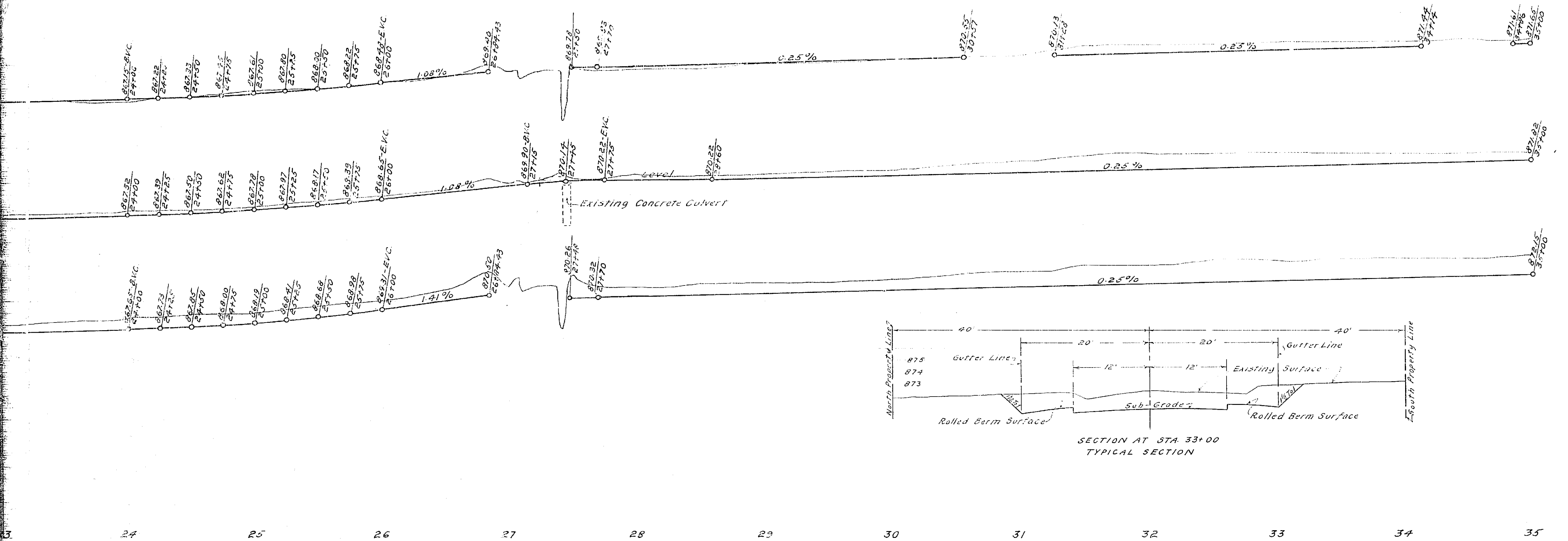
BERED 102, 104, 107 & 123

RIVERSIDE

RSIDE



PLAN No 940
SHEET No 1 OF 12 SHEETS



940

PLAN
Scale - 1" = 10'
PLAN No 940
SHEET No 1 OF 12 SHEETS