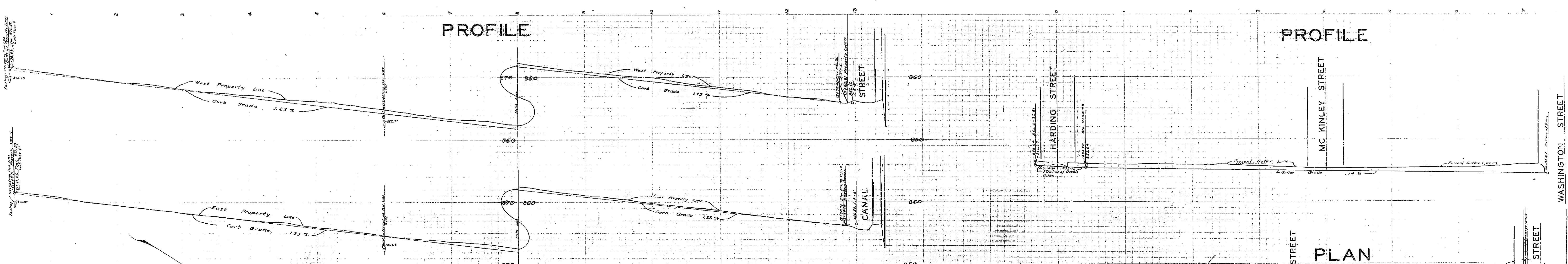


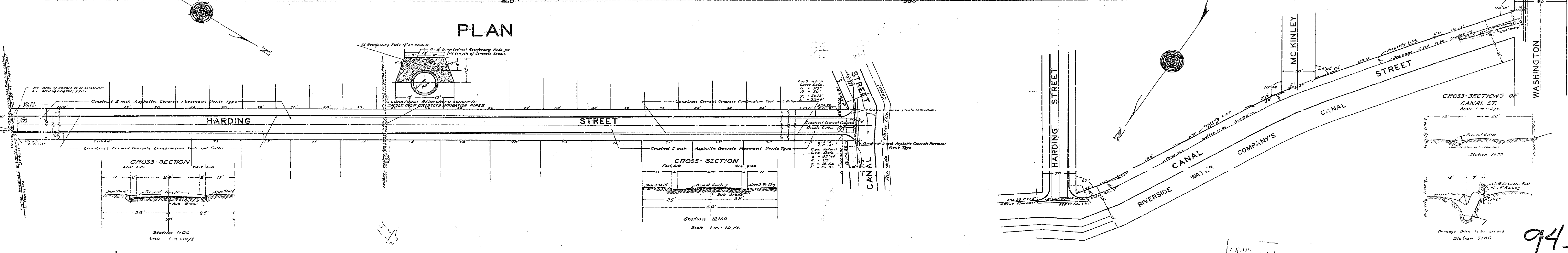
PROFILE

PROFILE



PLAN

PLAN



943

PLANS, PROFILES AND MAPS NUMBER E43.
SHEET NUMBER 1 OF 3 SHEETS.

PLANS AND PROFILES FOR THE PROPOSED STREET IMPROVEMENT OF POTOMAC STREET AND HARDING STREET

SCALE 1" = 40 FT.

ENGINEERING DEPARTMENT CITY OF RIVERSIDE DEC. 1978

PLANS, PROFILES AND MAPS NUMBER E43 CONSISTING OF 1 SHEET

SHEET NUMBER 1.....CONSISTS OF THE IMPROVEMENT OF POTOMAC AND HARDING STREETS.
SHEET NUMBER 2.....MAP SHOWING THE DISTRICT TO BE IMPROVED FOR THE IMPROVEMENT OF
POTOMAC STREET.
SHEET NUMBER 3.....MAP SHOWING THE DISTRICT TO BE IMPROVED FOR THE IMPROVEMENT OF
HARDING STREET.

INSTRUCTIONS TO CONTRACTOR

FOLLOW CONTRACTOR'S INSTRUCTIONS TO CONTRACTOR AND DETAIL PLANS.
WHEREAS THE 1978 MAP ARE A PART OF THESE SPECIFICATIONS.
ALL SIDEWALK CONSTRUCTION SHALL BE TWO COURSE CEMENT PAVEMENT.

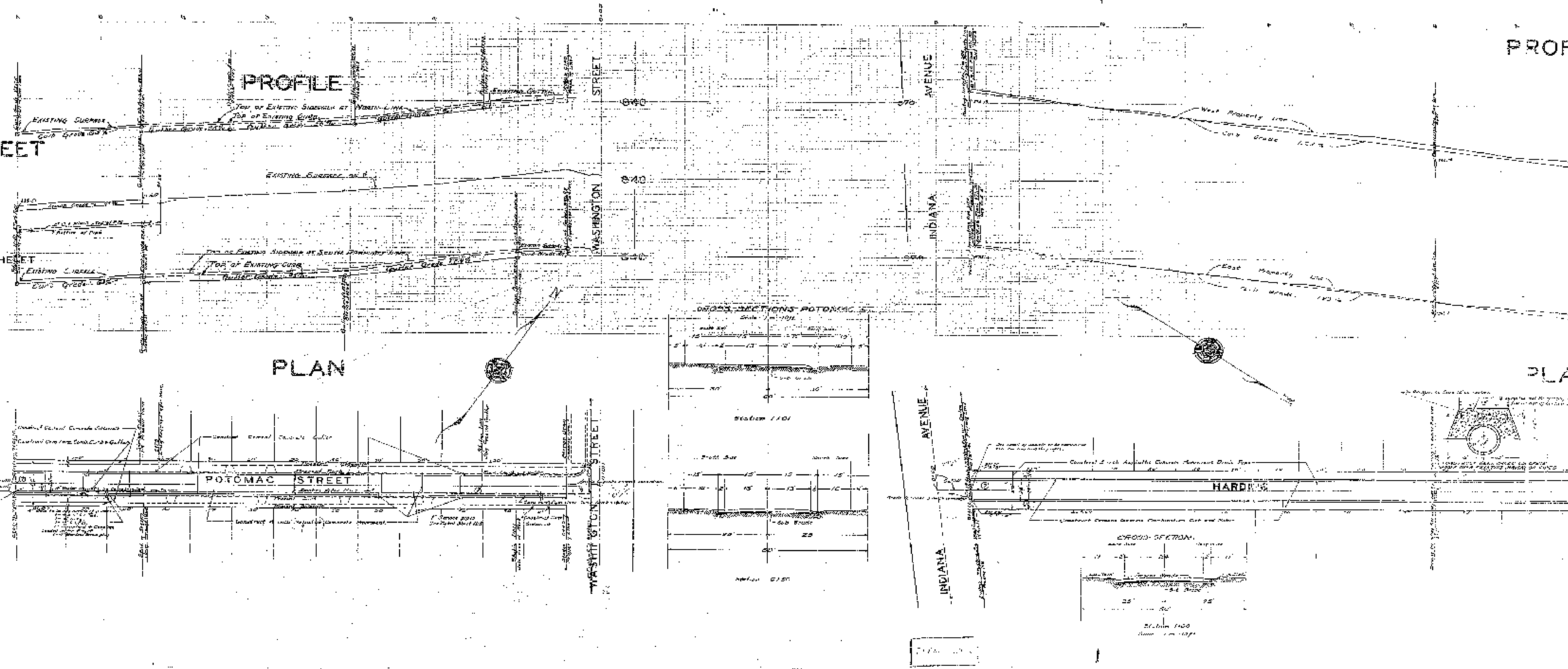
ELEVATIONS SHOWN HEREON ARE VERTICAL CURVES

FIELD BOOKS

BOOK 188, PAGE 28 TO 32 INC.
BOOK 187, PAGE 4-12 & 25.

Contractor to verify stationing
with the field books and to
verify the location of
the centerline of the
streets.

ADOPTED BY THE BOARD AND COUNCIL OF THE
CITY OF RIVERSIDE THIS 10TH DAY OF DECEMBER, 1978
ATTEN: *[Signature]*
CLERK OF THE CITY OF RIVERSIDE.



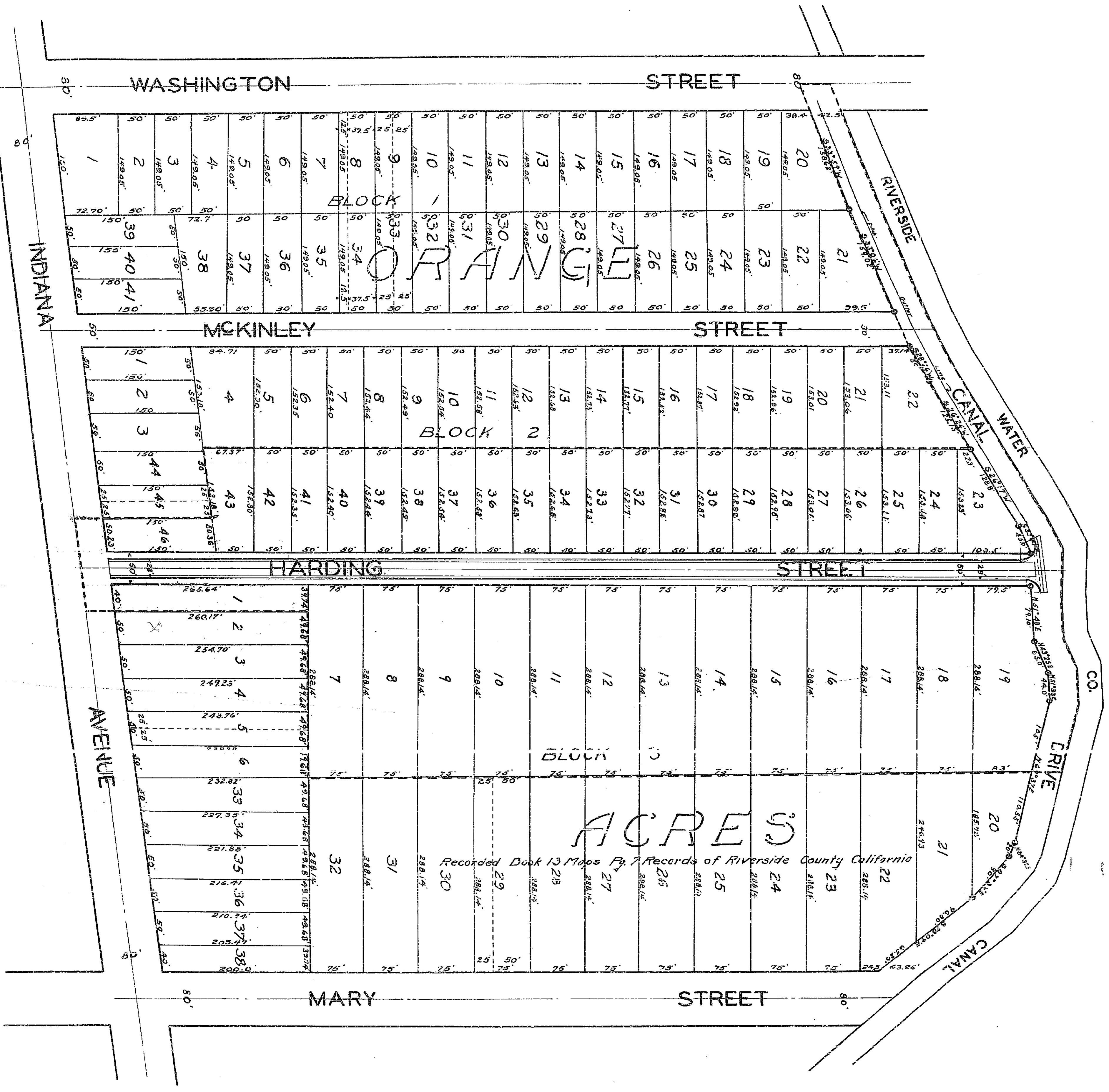
PROF

PLA

MAP SHOWING THE EXTENT OF THE TERRITORY TO BE INCLUDED
 IN THE DISTRICT TO BE ASSESSED FOR THE IMPROVEMENT OF
 HARDING STREET DESCRIBED IN RESOLUTION OF INTENTION NO.
 NEW SERIES OF THE COUNCIL OF THE CITY OF RIVERSIDE

PLANS, PROFILES AND MAPS NUMBER 943.
 SHEET NUMBER 3 OF 3 SHEETS.

DISTRICT BOUNDARY SHOWN THUS----



943

MAP SHOWING THE EXTENT OF TERRITORY TO BE INCLUDED IN THE DISTRICT TO BE ASSESSED FOR THE IMPROVEMENT OF POTOMAC STREET DESCRIBED IN RESOLUTION OF INTENTION NO. NEW SERIES OF THE COUNCIL OF THE CITY OF RIVERSIDE.

PLANS, PROFILES AND MAPS NUMBER 943.
SHEET NUMBER 2 OF 3 SHEETS.

DISTRICT BOUNDARY SHOWN THUS----

1 INCH = 100 FEET

943

