

PLAN AND PROFILE
 OF THE PROPOSED STORM WATER DITCH IN
TEQUESQUITE ARROYO
 BETWEEN EXISTING DITCH NEAR SAUNDERS ST.
 AND EXISTING CULVERT UNDER MAGNOLIA AVE.

ENGINEERING DEPARTMENT-CITY OF RIVERSIDE. DECEMBER, 1930

PLAN PROFILE AND DETAILS NO. 944-B~CONSISTING OF 5SHEETS

SHEET NUMBERED 1 PLAN AND PROFILE OF STORM WATER DITCH
 SHEET NUMBERED 2 CROSS SECTIONS OF STORM WATER DITCH
 SHEETS NUMBERED 3,4,5 DETAILS OF ALTERNATE VEHICULAR CROSSINGS

FIELD BOOKS
 BOOK 229 PAGES 15 TO 24

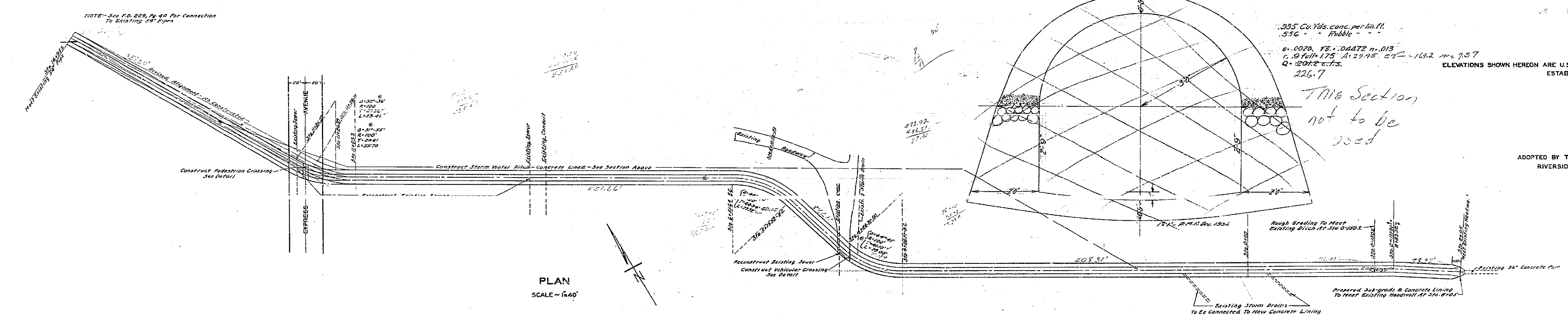
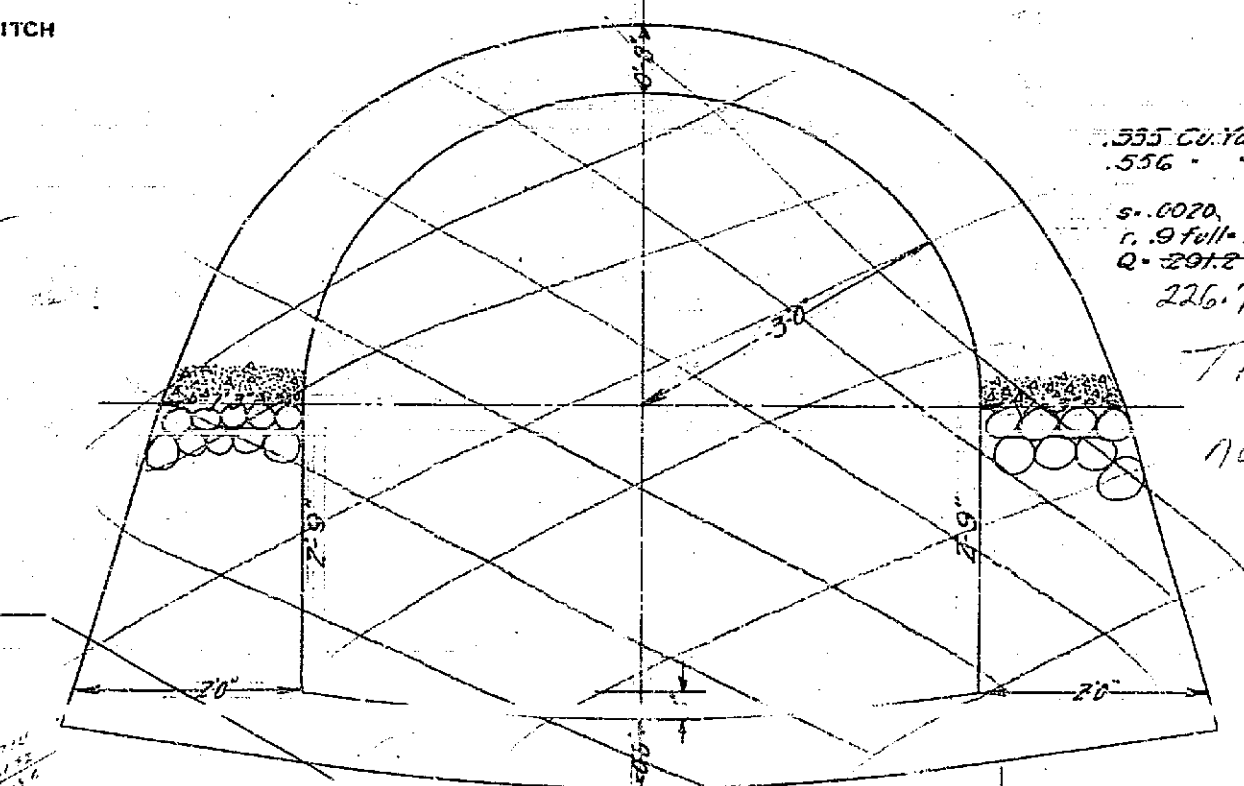
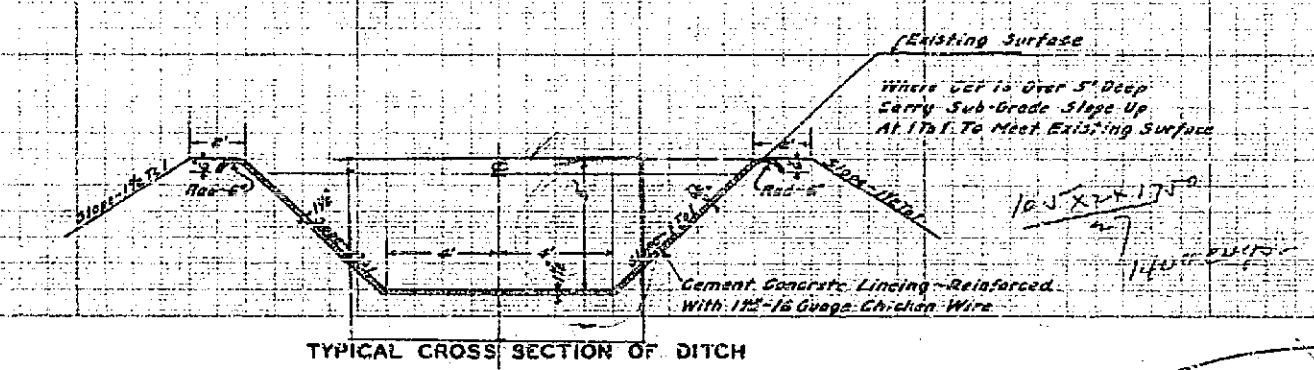
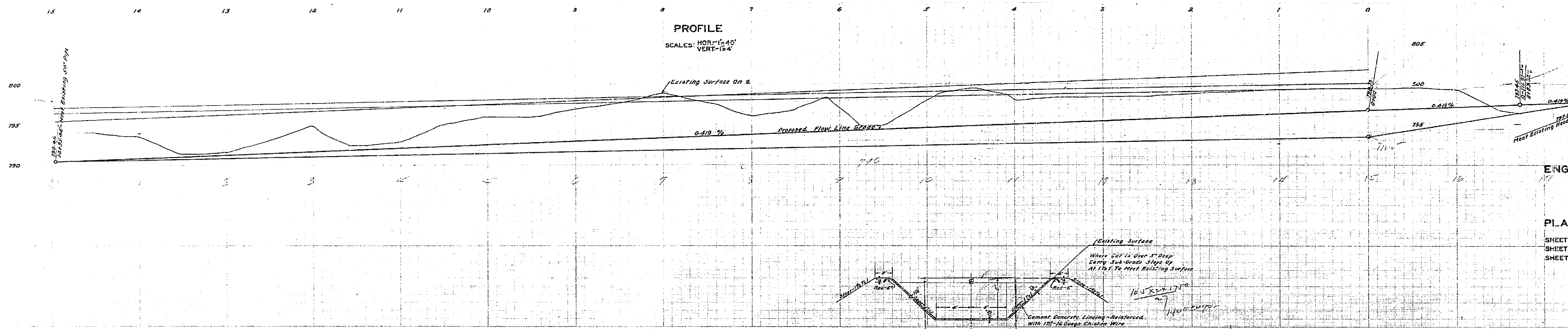
ELEVATIONS SHOWN HEREON ARE U.S.G.S. DATUM WHICH IS THE OFFICIAL CITY DATUM PLANE AS ESTABLISHED BY ORDINANCE NO. 551 N.S.

ADOPTED BY THE MAYOR AND COUNCIL OF THE CITY OF RIVERSIDE THIS 23RD DAY OF DECEMBER 1930

Robert Bridges
 CITY CLERK, CITY OF RIVERSIDE

944B

SHEET NO. 1



PLAN
 SCALE ~ 1/4\"/>

NOTE: See P.L. 229, Pg. 20 For Connection To Existing 36\"/>