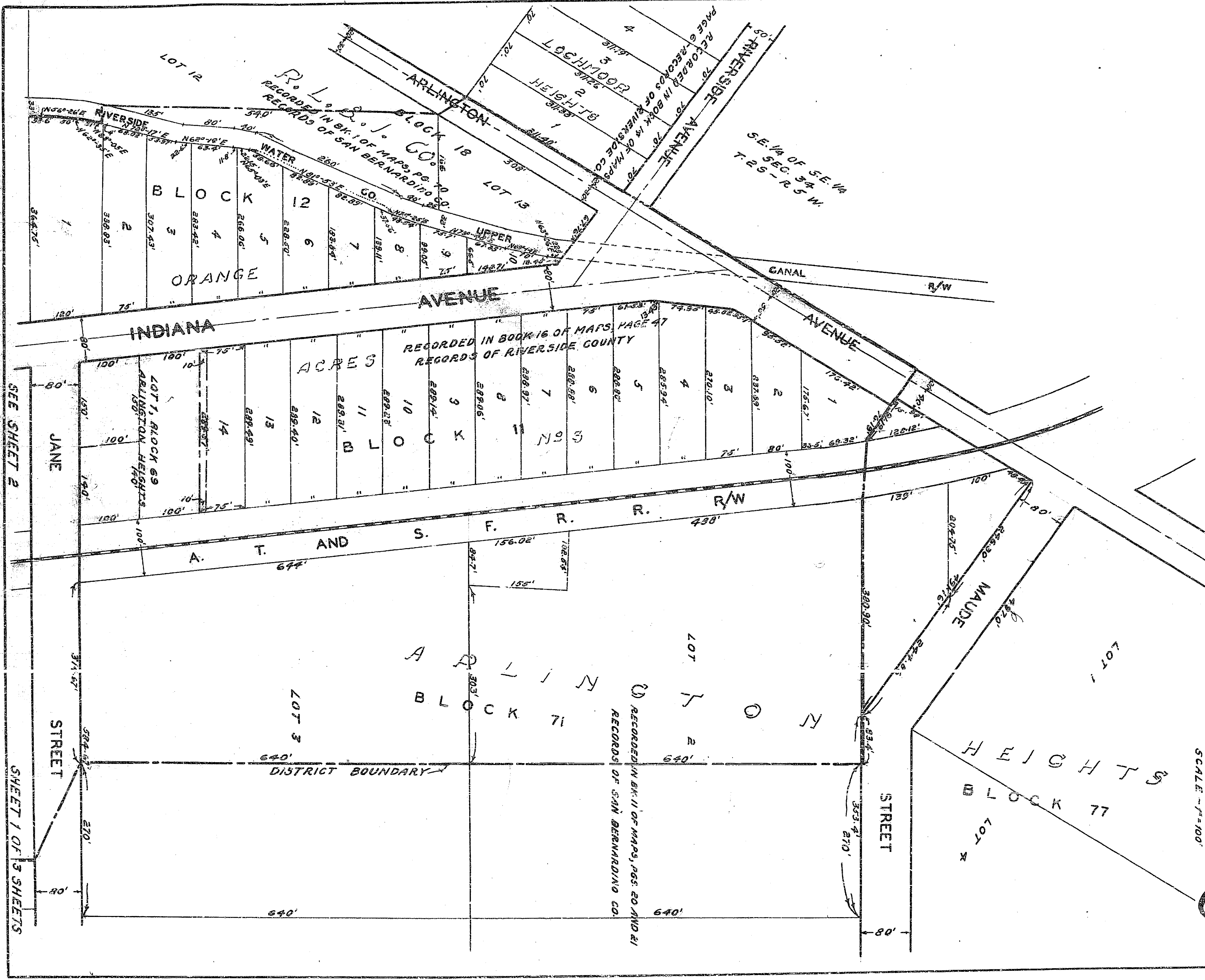


MAP, SHOWING THE EXTENT OF THE TERRITORY TO BE INCLUDED IN THE DISTRICT TO BE ASSESSED FOR THE IMPROVEMENT OF INDIANA AVENUE DESCRIBED IN RESOLUTION OF INTENTION NO. NEW SERIES OF THE COUNCIL OF THE CITY OF RIVERSIDE

DISTRICT BOUNDARY SHOWN THUS: \_\_\_\_\_



SCALE - 1" = 100'

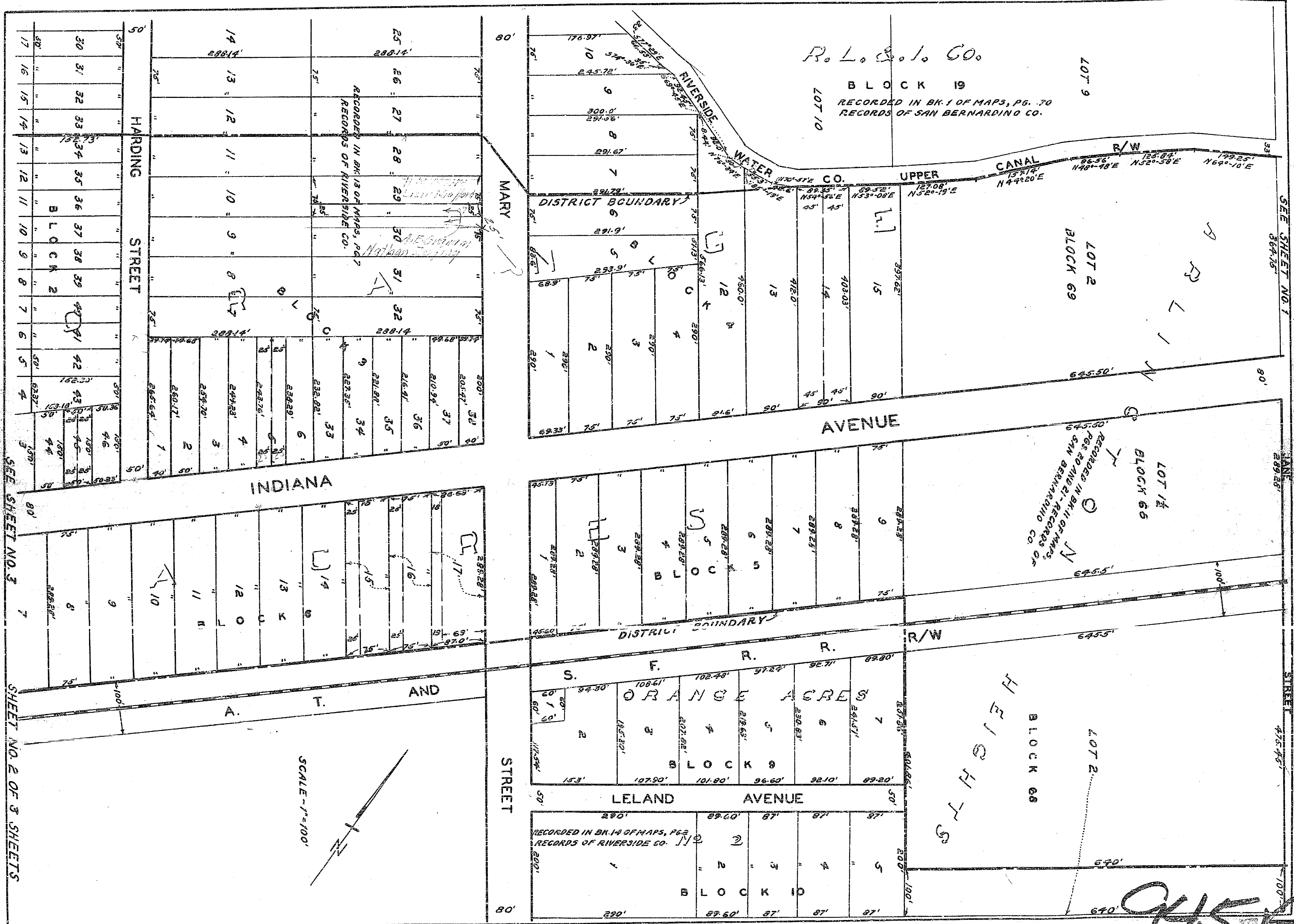
945A

PLANS, PROFILES AND MAPS NO. 945 SHEET NO. 6 OF 12 SHEETS

SHEET 1 OF 3 SHEETS

SEE SHEET 2

40

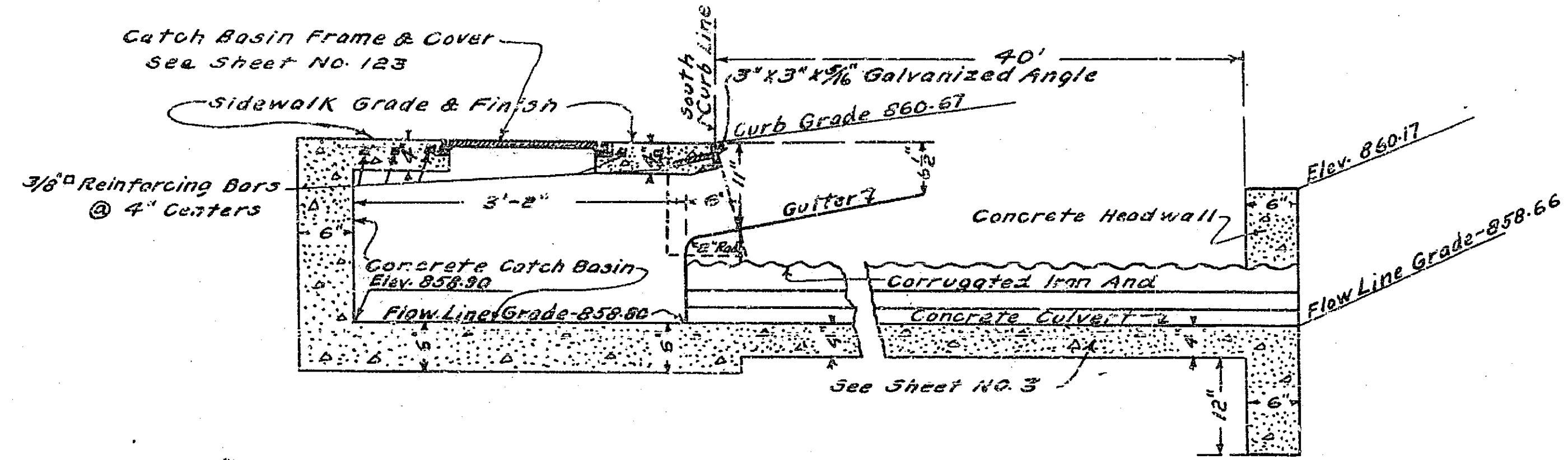


*Handwritten signature or initials*

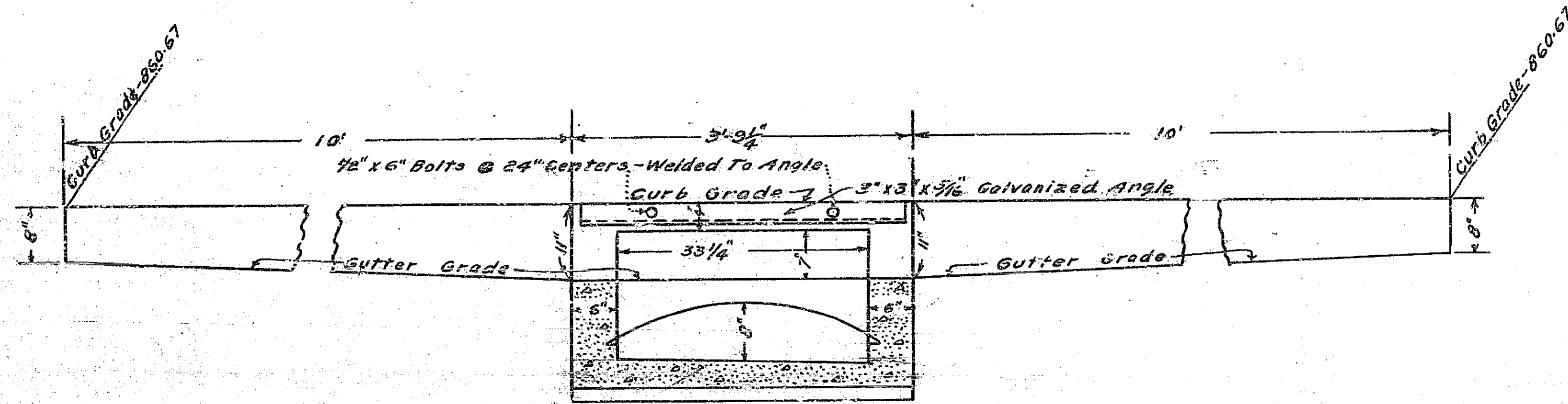
**MISSING**

DETAILS OF CATCH BASIN AND CULVERT AT STA. 64+05

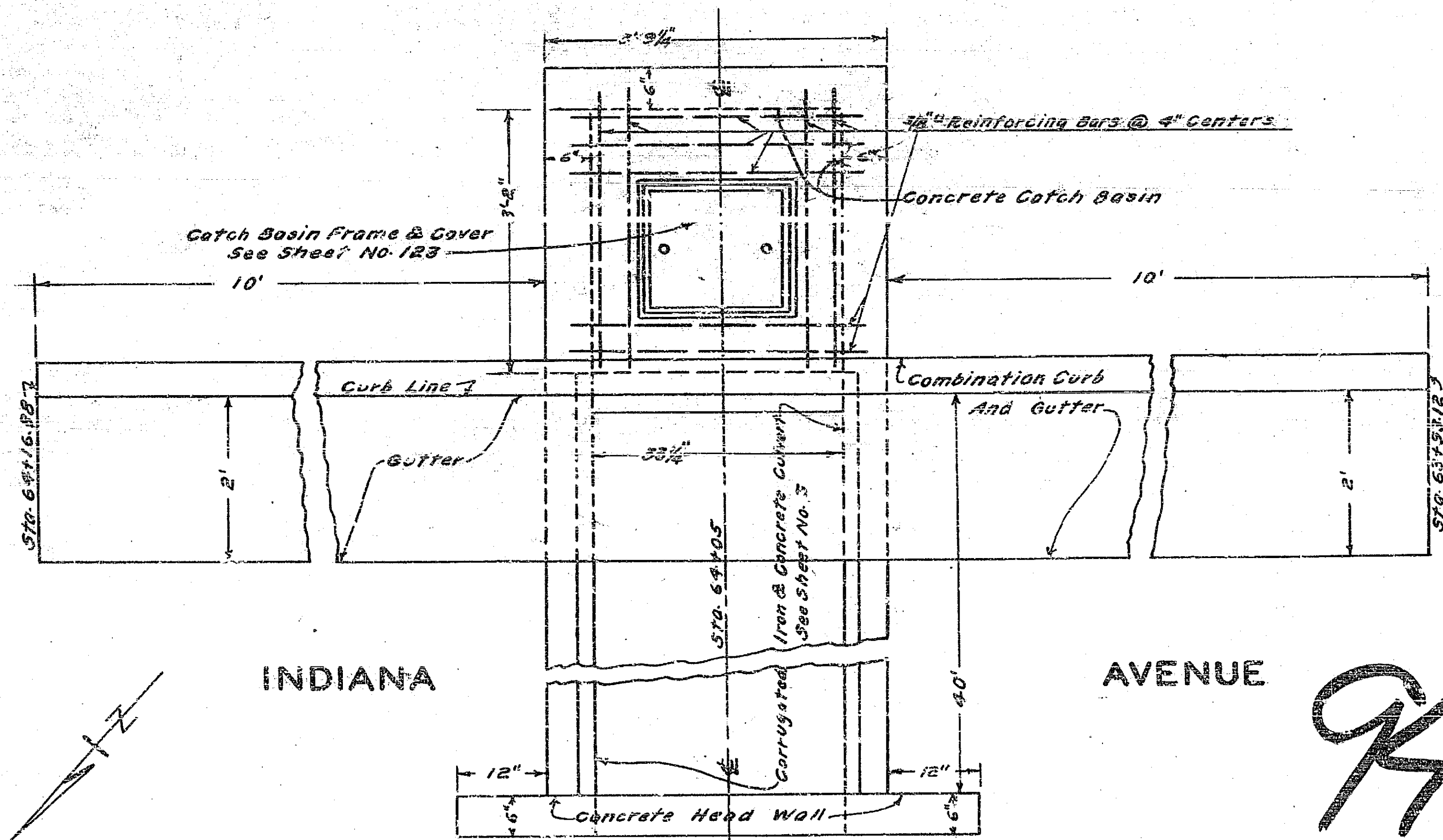
Scale - 3/4" = 1'



SECTION ON E



SECTION ALONG CURB LINE



PLAN

**945A**

PLAN No 945  
SHEET No. 4 OF 12 SHEETS