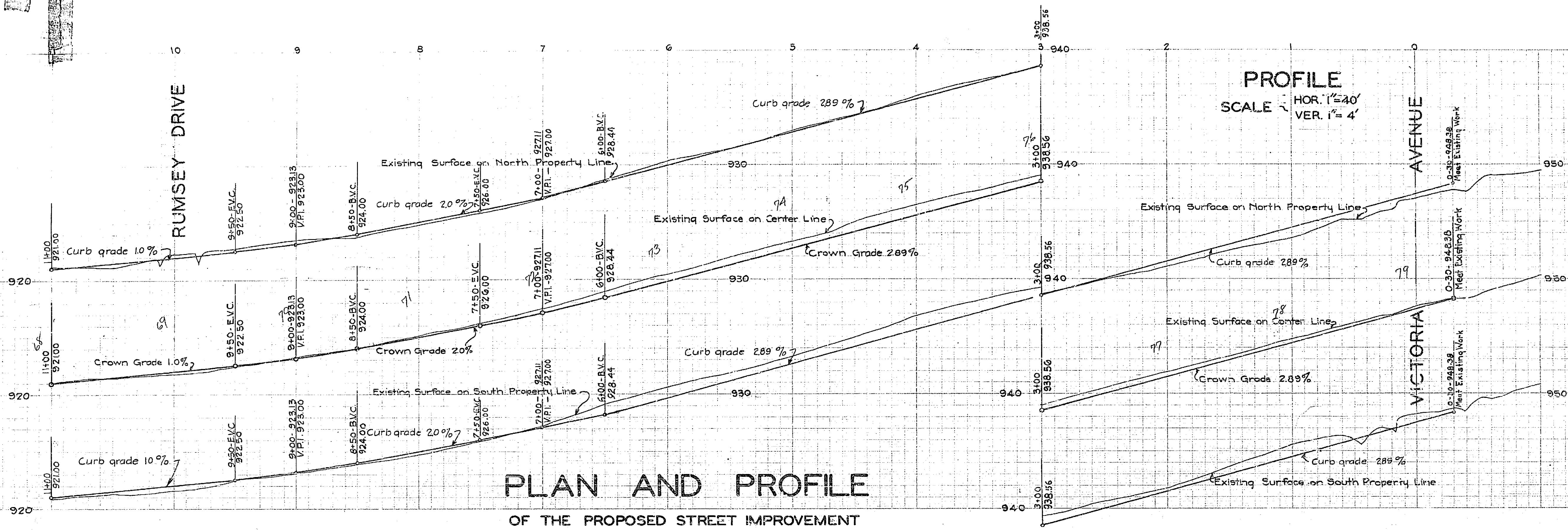


Central Ave. Victoria to Olivewood			
Drawing Number	Sheet Number	Total Sheet	Field Books
948-C	3	3	264x265
Drawn	Checked	Approved	
Arthur N. Ridley			
MAY 8 1939			

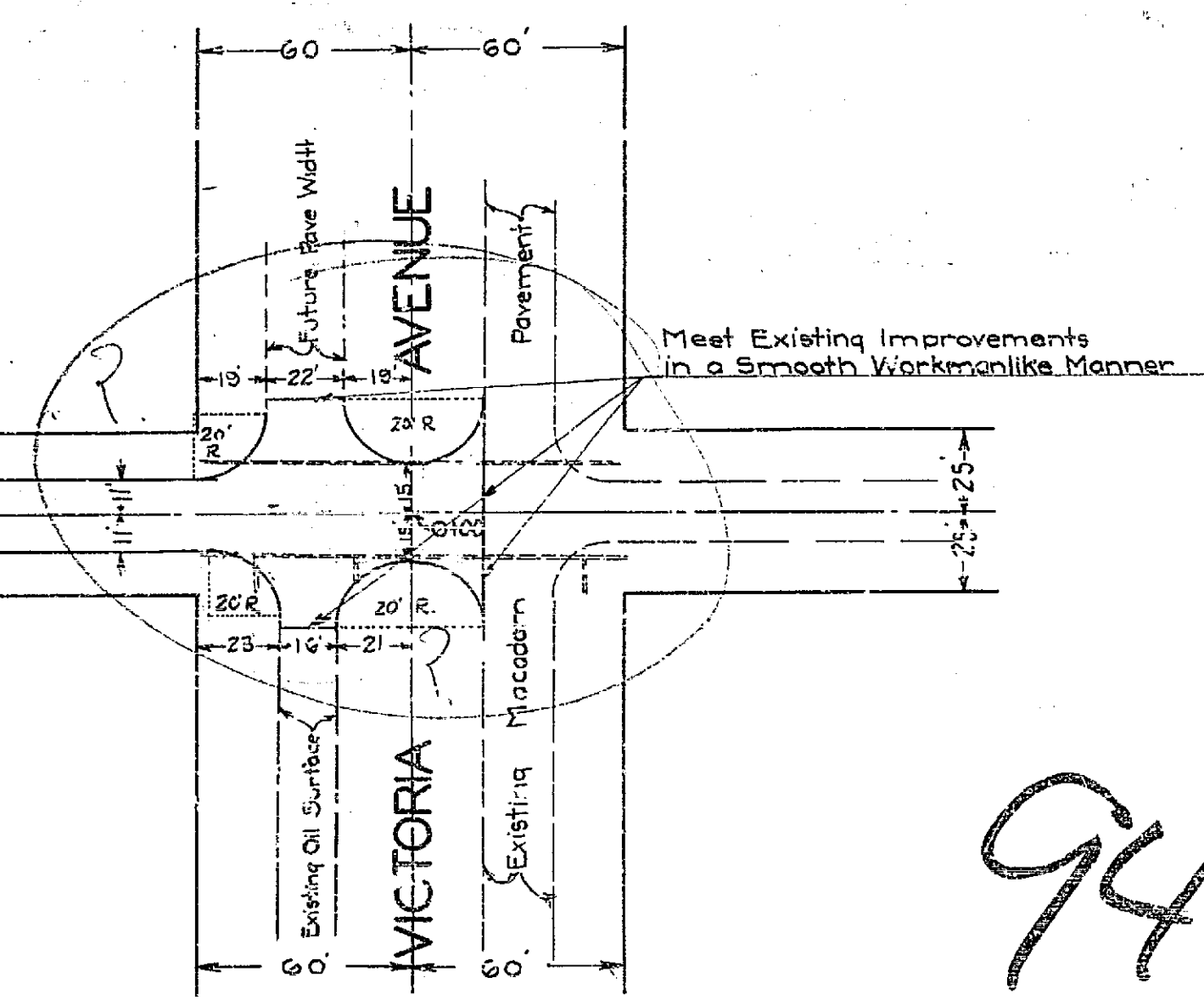
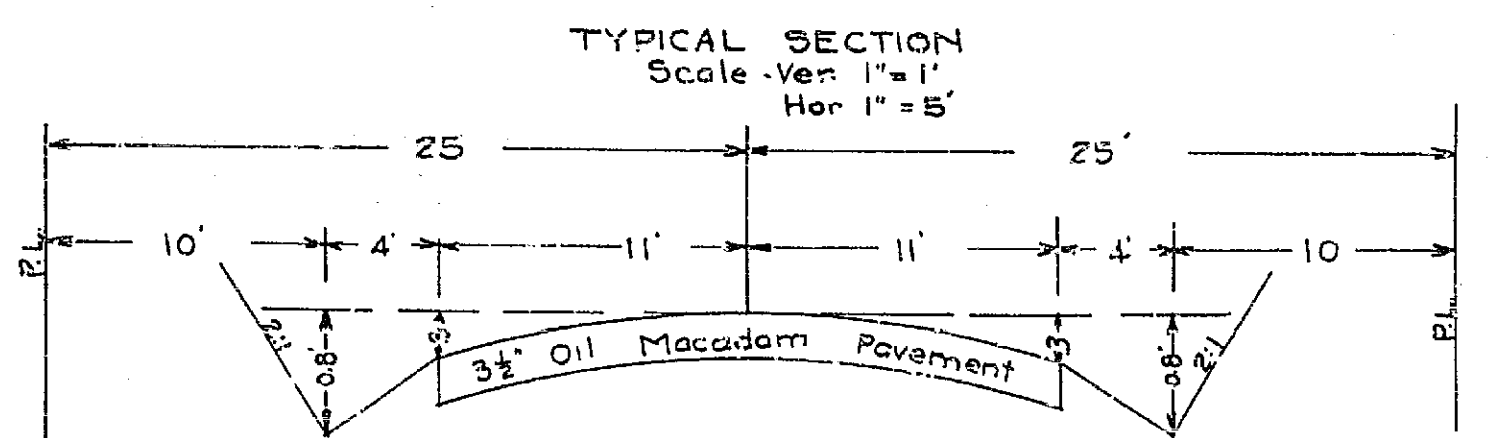
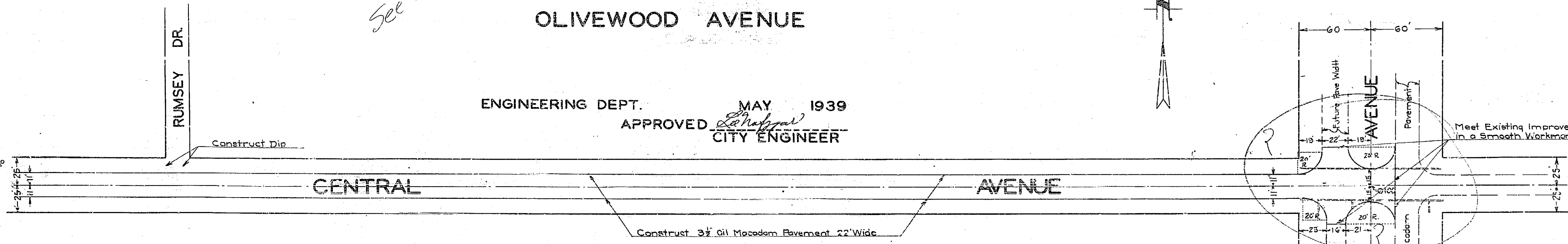


**PLAN AND PROFILE**  
OF THE PROPOSED STREET IMPROVEMENT  
**CENTRAL AVENUE**

FROM  
**VICTORIA AVENUE**  
TO  
**OLIVEWOOD AVENUE**

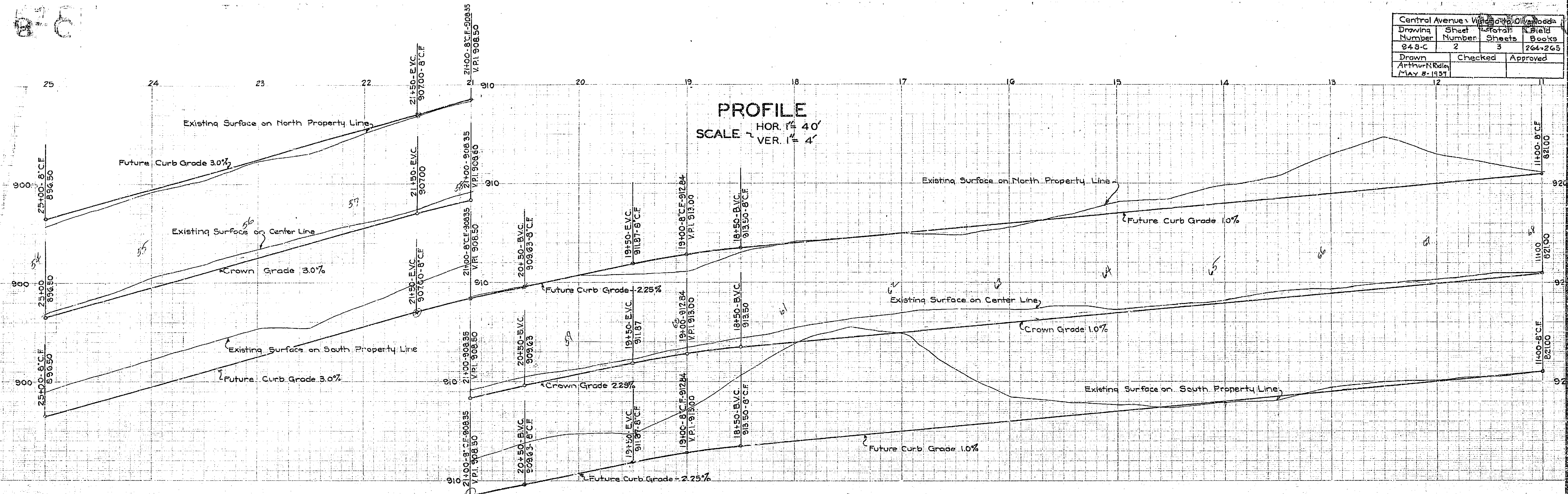
*See Map No 1061*

ENGINEERING DEPT. MAY 1939  
APPROVED *[Signature]*  
CITY ENGINEER



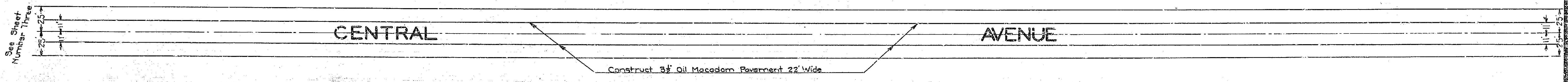
948C

Central Avenue - Village of Oil Springs			
Drawing Number	Sheet Number	Total Sheets	Field Books
848-C	2	3	264+265
Drawn	Checked	Approved	
Arthur N. Riley			
May 8-1937			



See Map No 1061

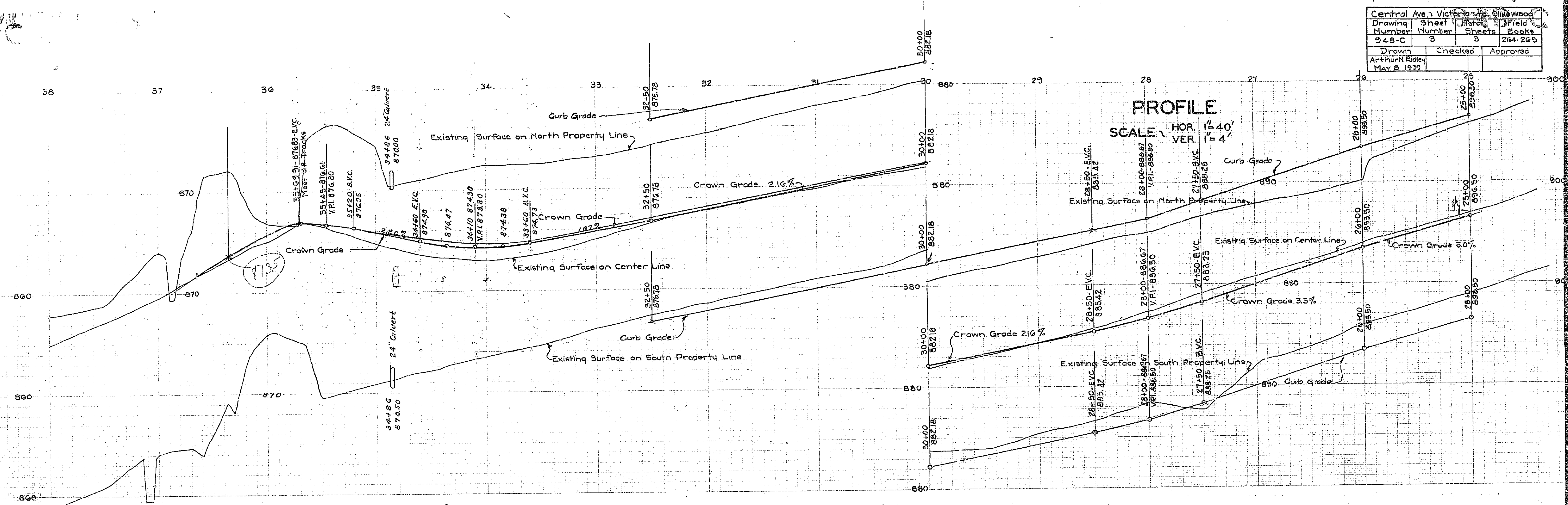
**PLAN**  
SCALE - 1" = 40'



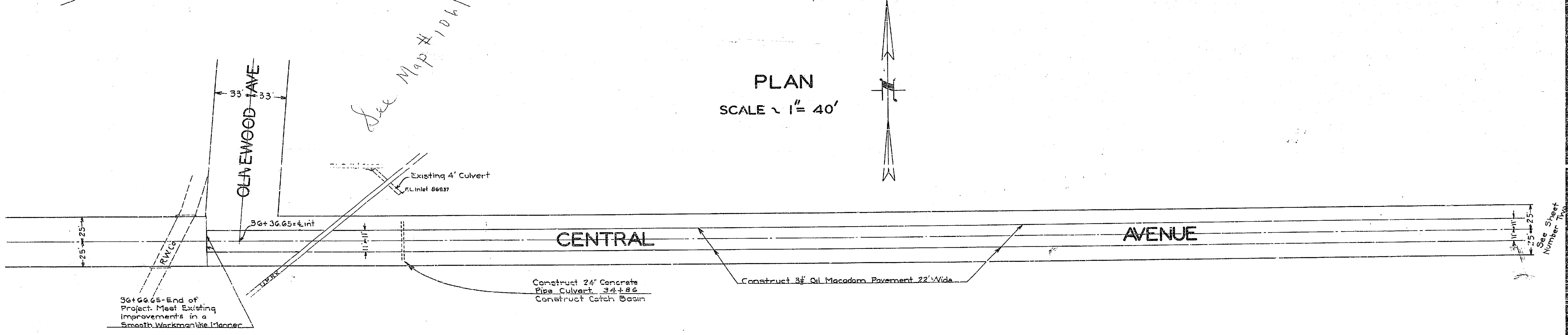
9480



Central Ave. Victoria, B.C.			
Drawing Number	Sheet Number	Books	Field
948-C	3	264-265	
Drawn	Checked	Approved	
Arthur R. Rodey			
May 8 1939			



**PROFILE**  
 SCALE: HOR. 1" = 40'  
 VER. 1" = 4'



**PLAN**  
 SCALE 1" = 40'

*See Map # 1061*

948C