

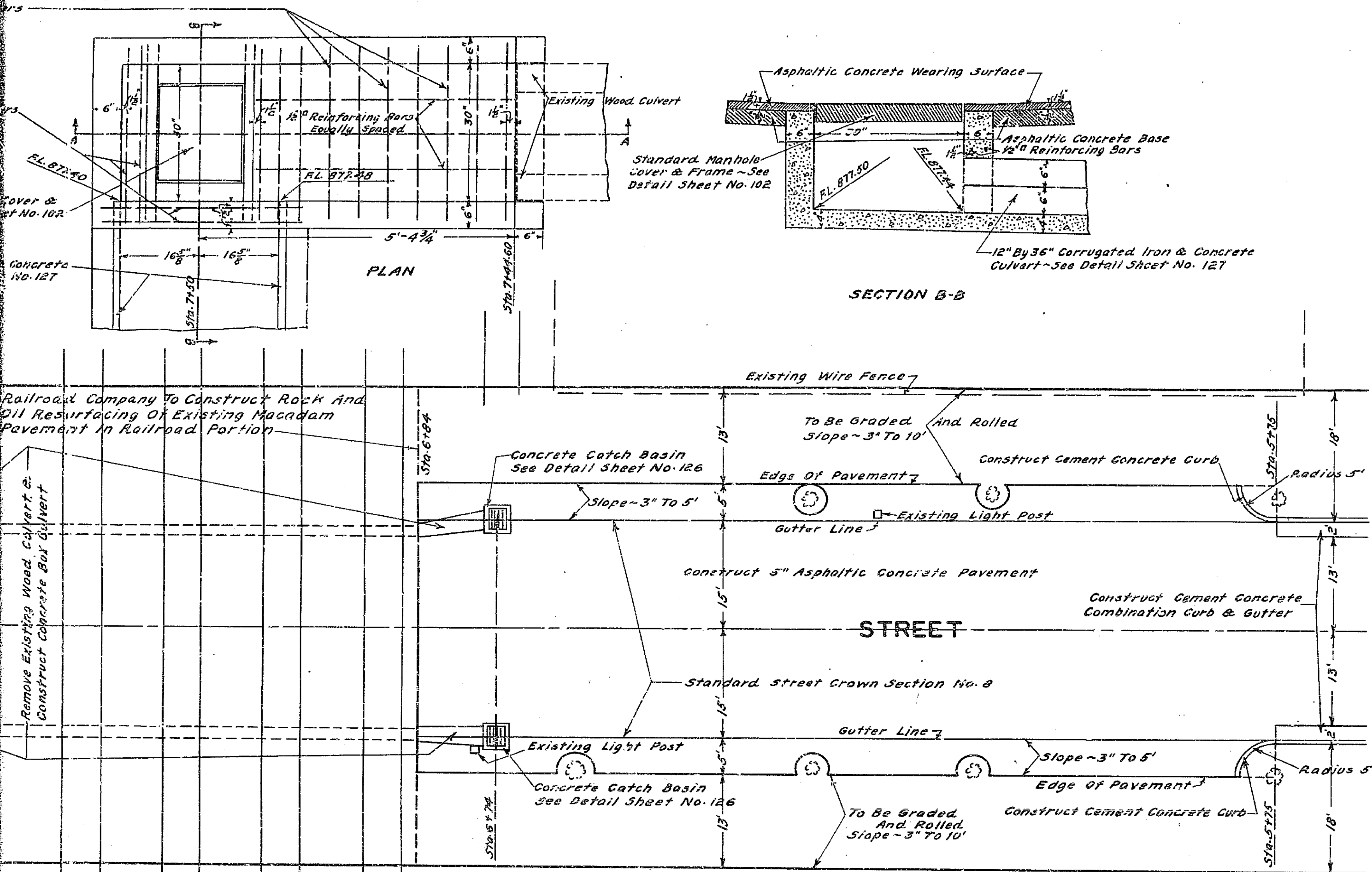
**MISSING**

**MISSING**

CONSTRUCTION BETWEEN STA. 5+75 AND STA. 9+73.3

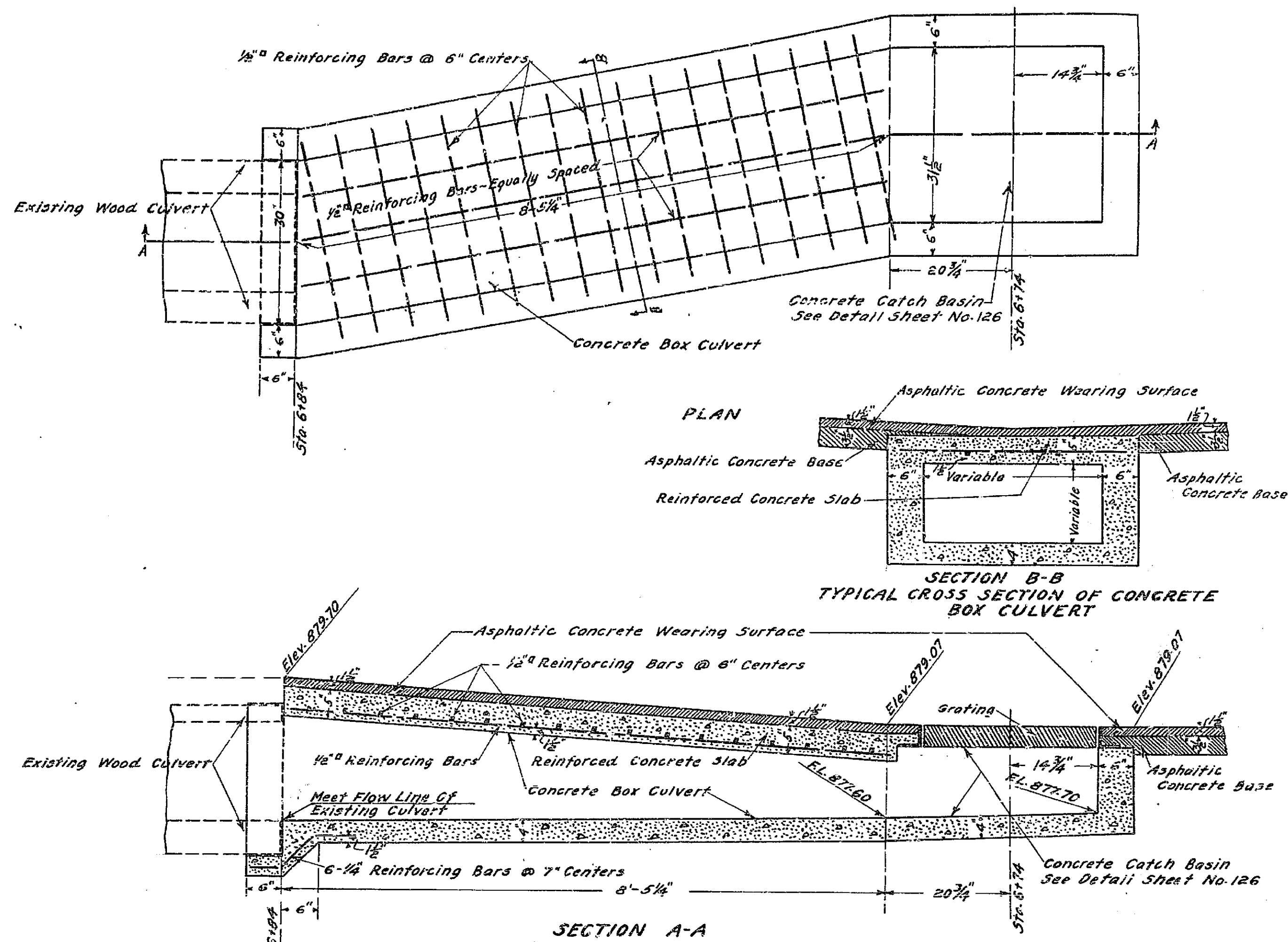
DETAILS OF DRAINAGE STRUCTURE AT STA. 7+50 - NORTH SIDE

Scale - 3/4" = 1'



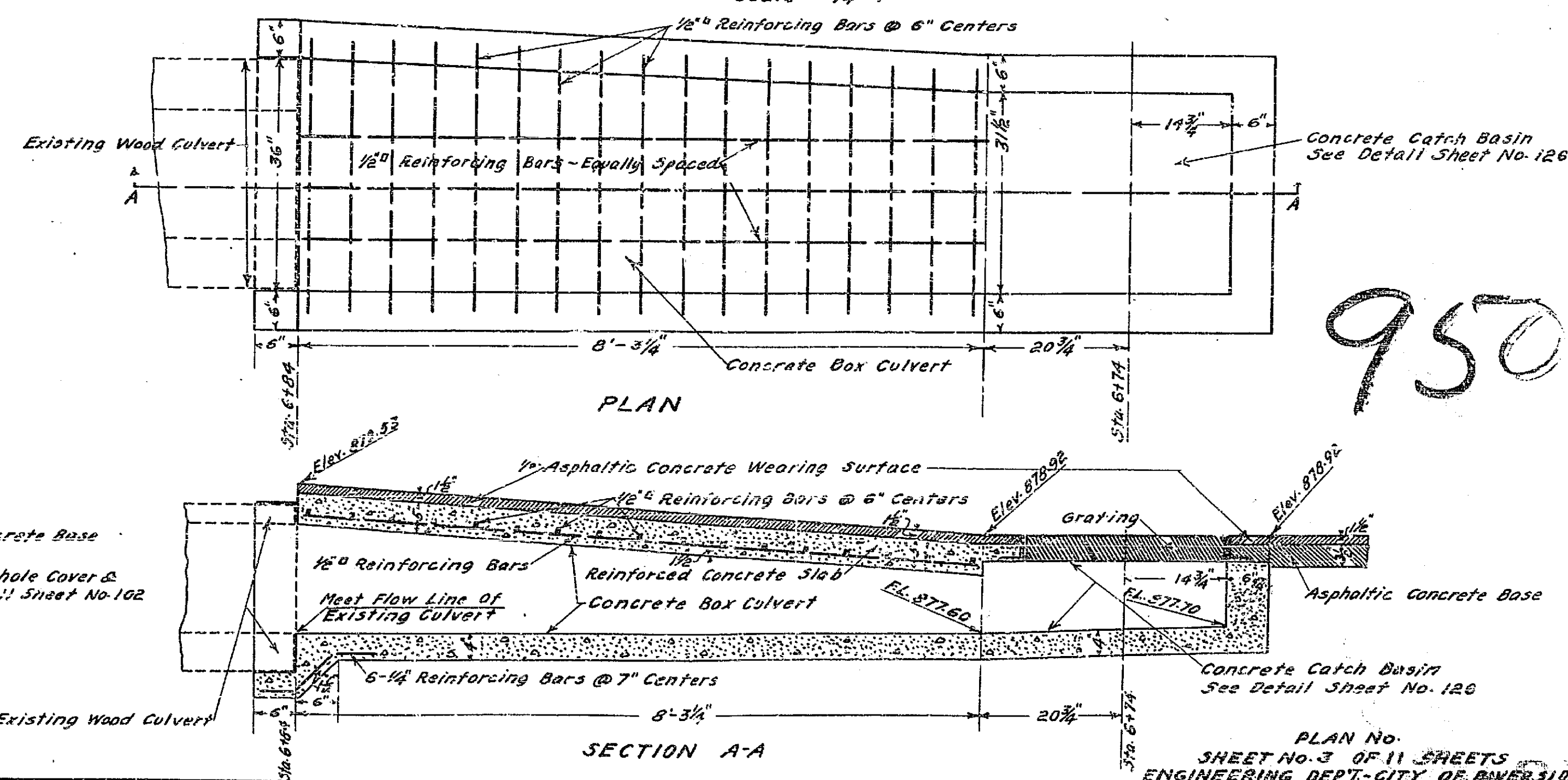
DETAILS OF DRAINAGE STRUCTURE AT STA. 6+74 - NORTH SIDE

Scale - 3/4" = 1'



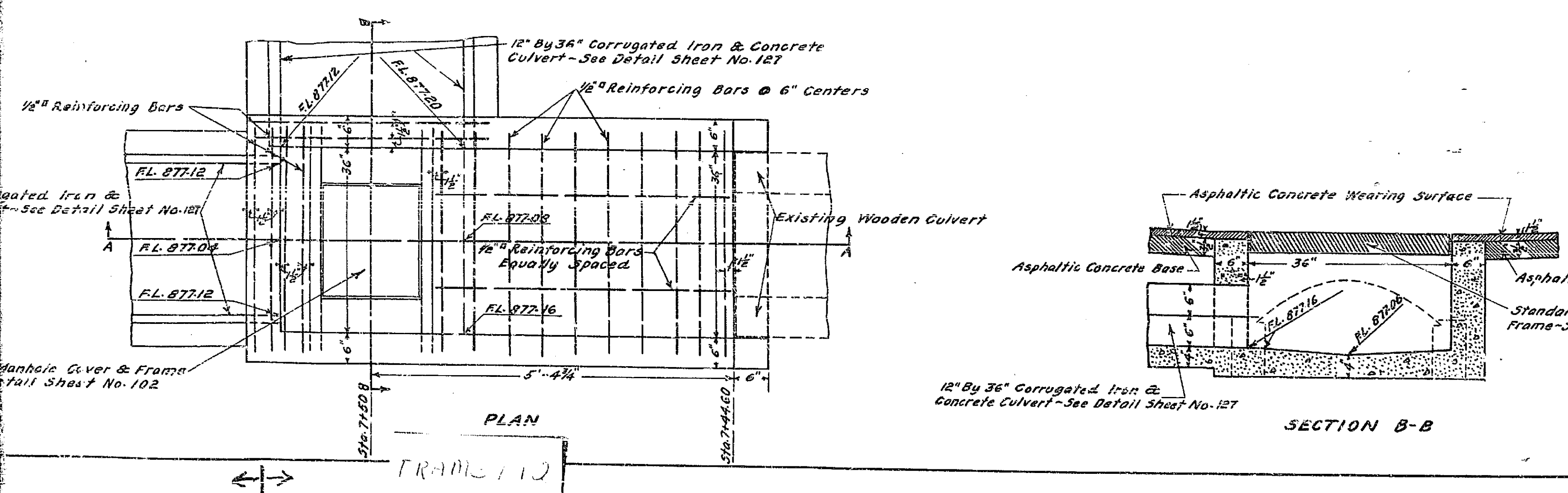
DETAILS OF DRAINAGE STRUCTURE AT STA. 6+74 - SOUTH SIDE

Scale - 3/4" = 1'



DETAILS OF DRAINAGE STRUCTURE AT STA. 7+50 - SOUTH SIDE

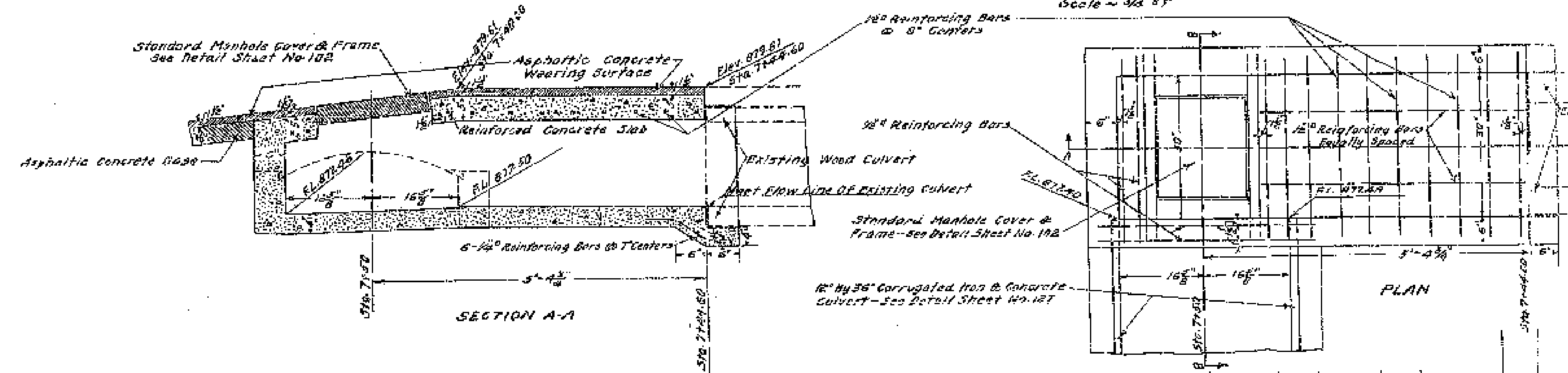
Scale - 3/4" = 1'



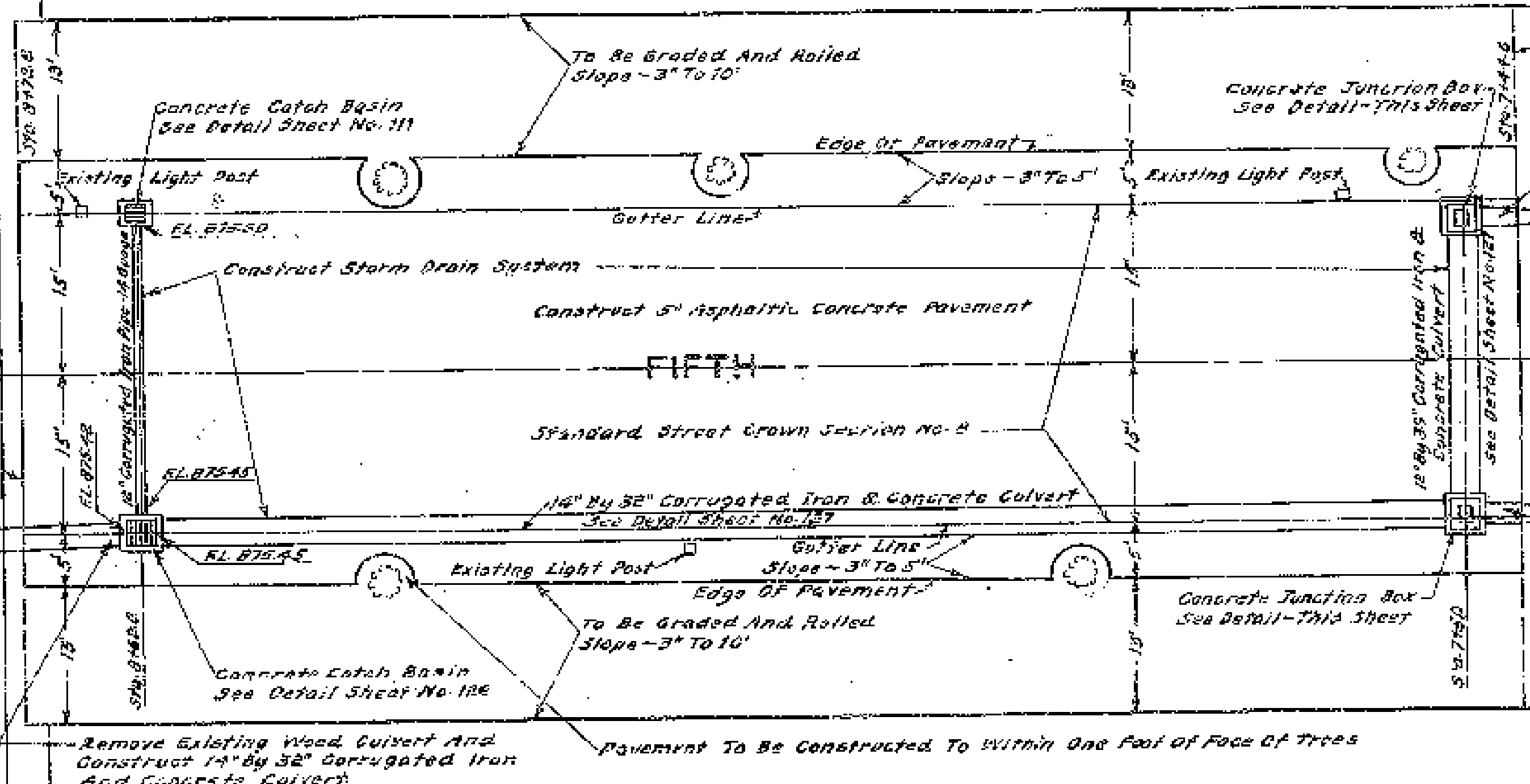
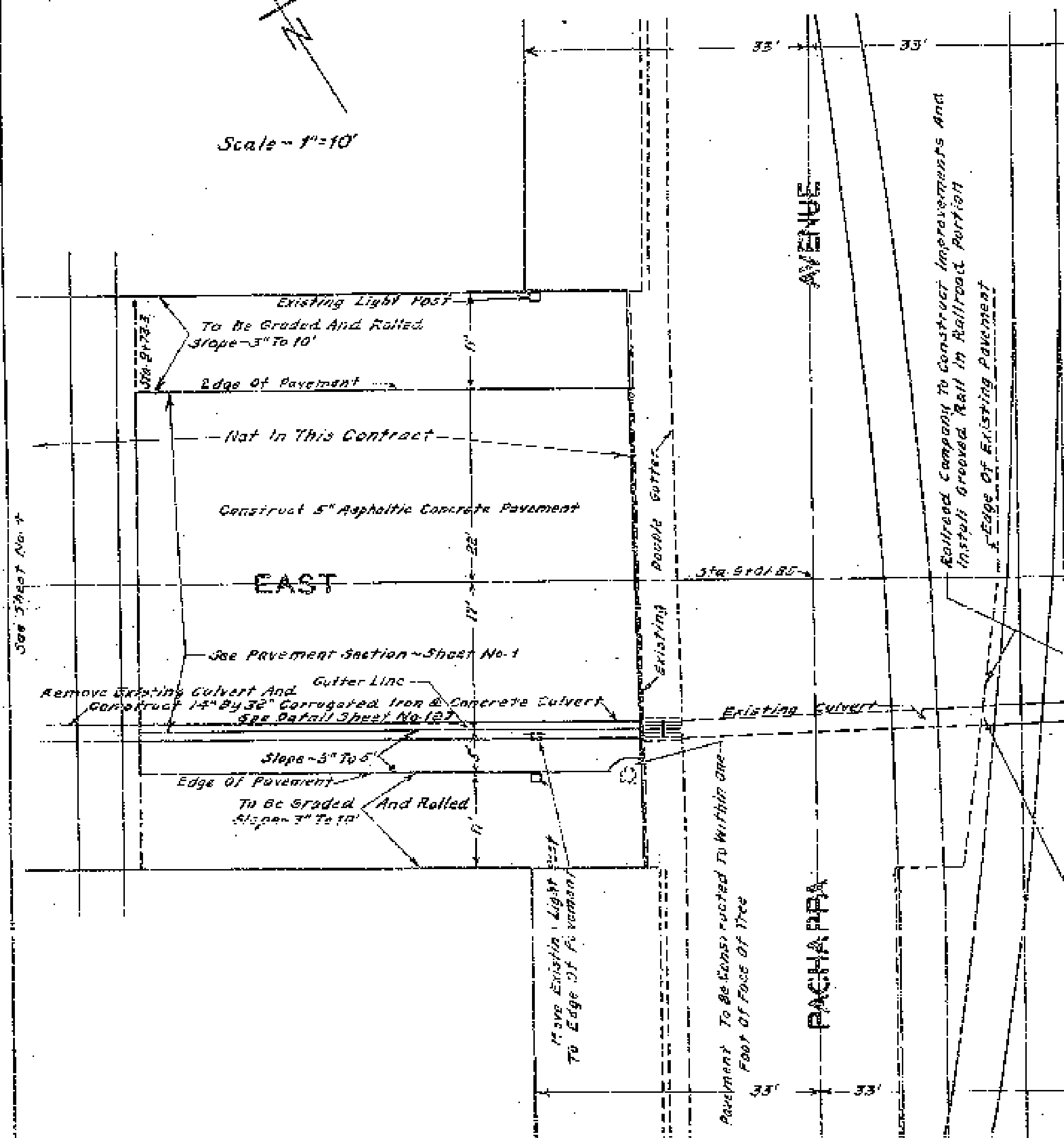
9500

DETAILS OF CONSTRUCTION BETWEEN STA. 5+75 AND

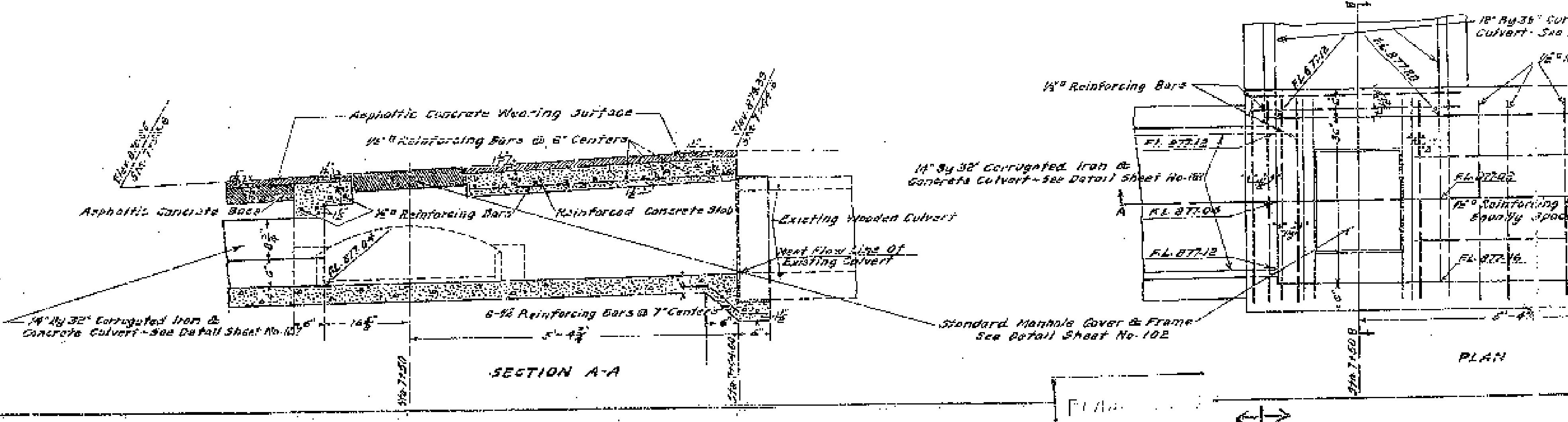
DETAILS OF DRAINAGE STRUCTURE AT STA. 7+50-NORTH SIDE  
Scale - 3/4" = 1'



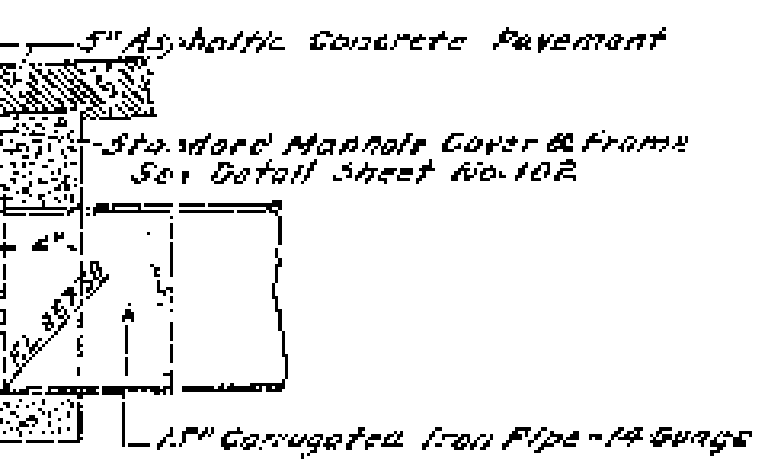
Scale - 1" = 10'



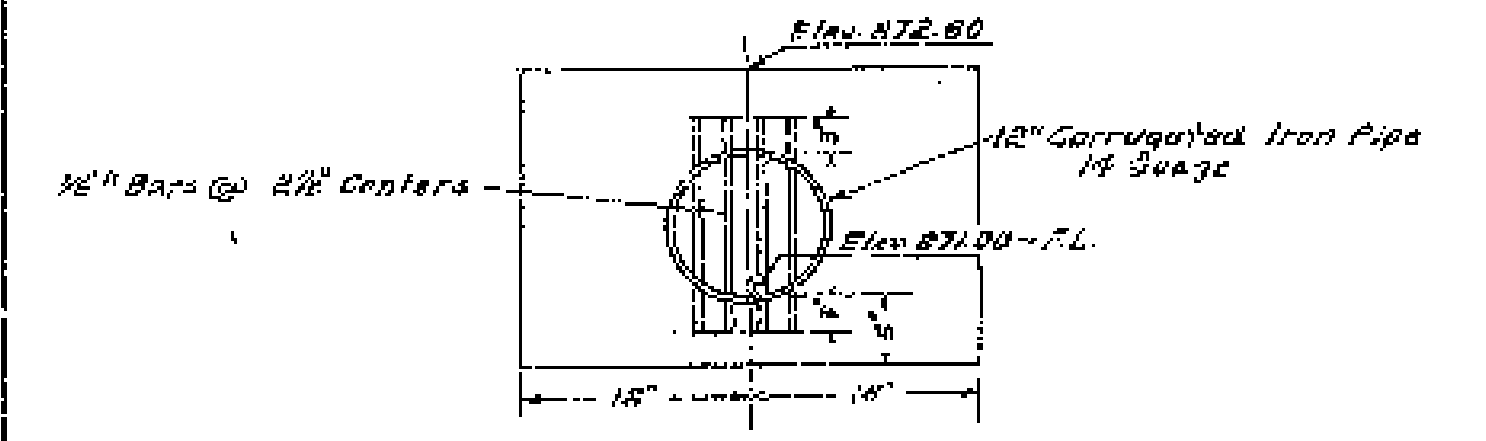
DETAILS OF DRAINAGE STRUCTURE AT STA. 7+50-SOUTH SIDE  
Scale - 3/4" = 1'



Scale - 1" = 10'

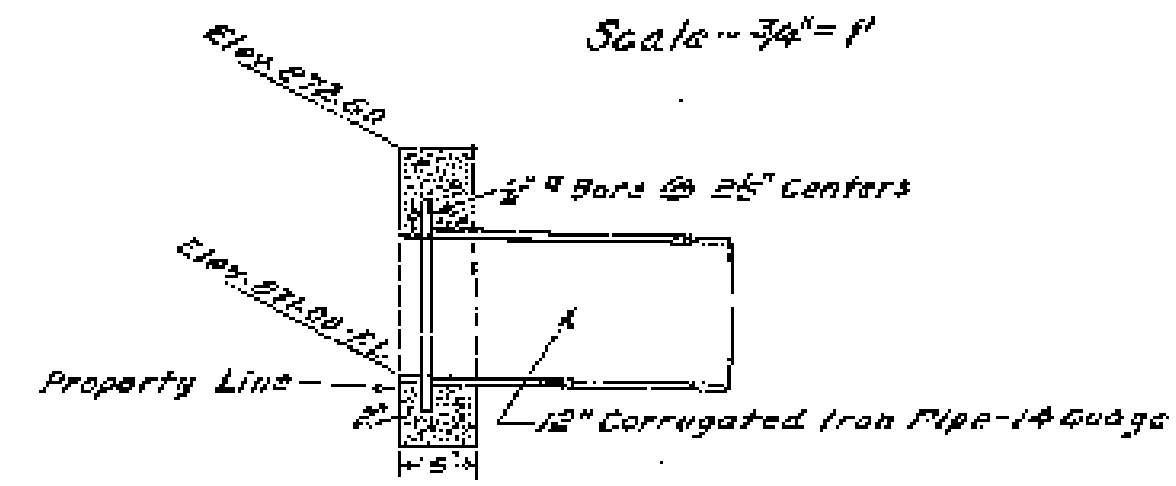


DETAILS OF CONCRETE HEAD WALL AT STA. 12+73



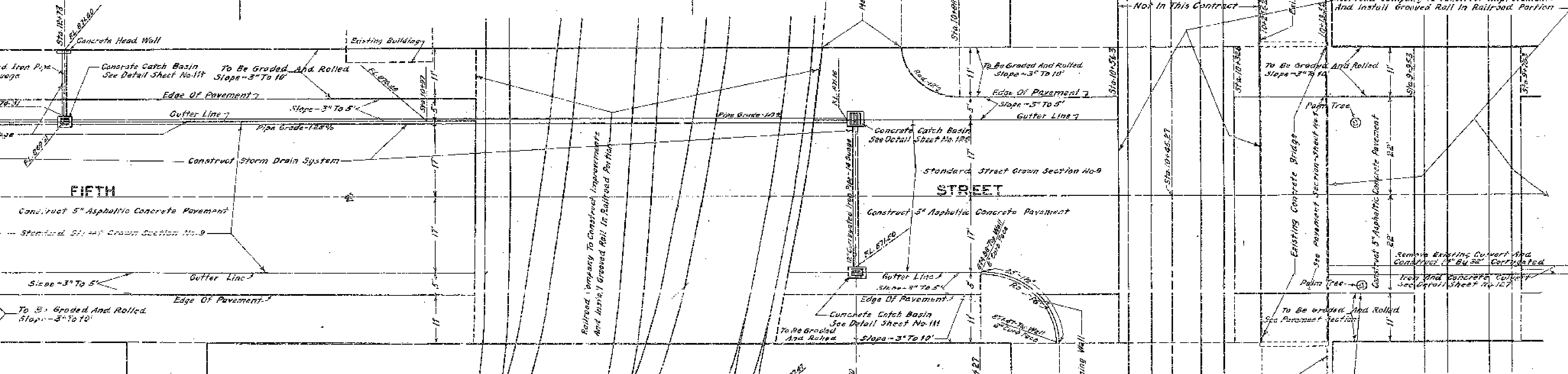
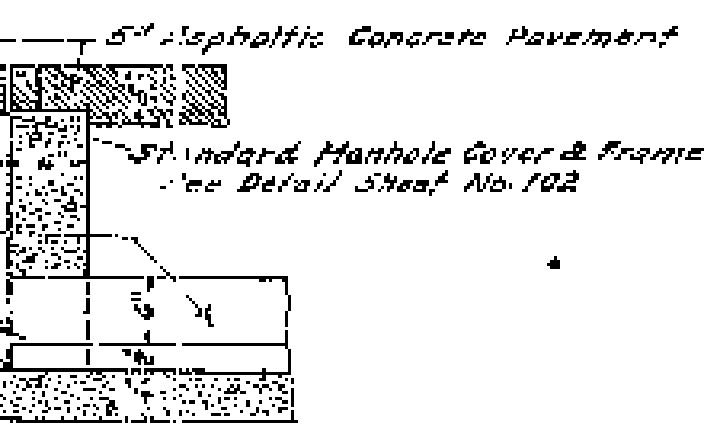
ELEVATION AT PROPERTY LINE

Scale - 3/4" = 1'

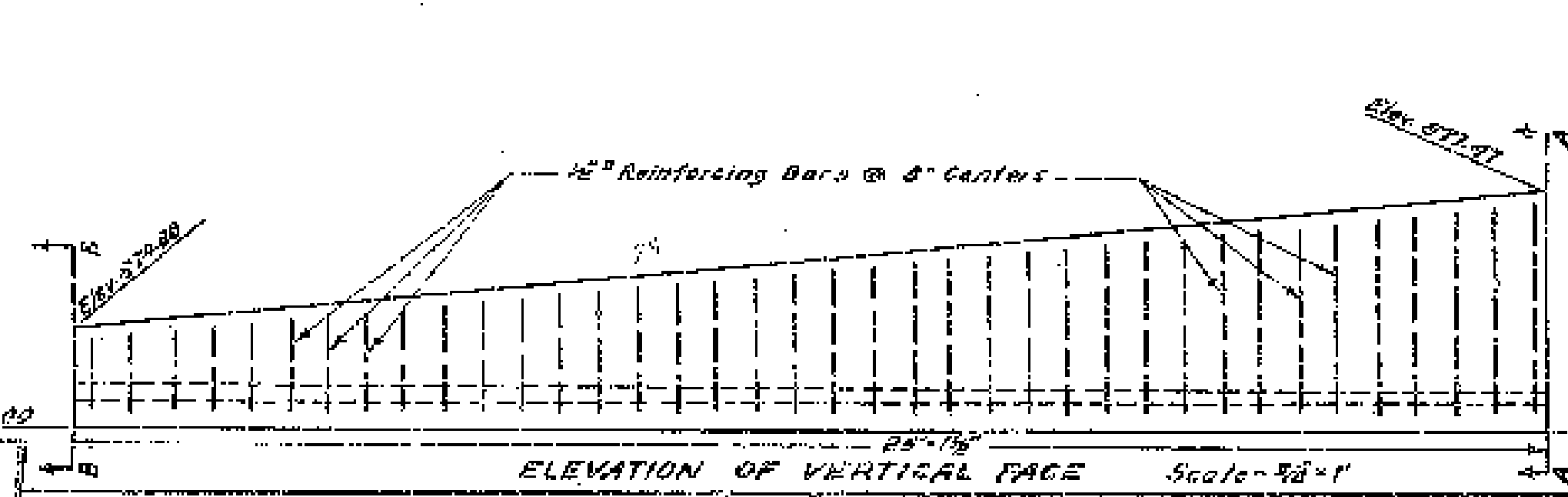


CROSS SECTION

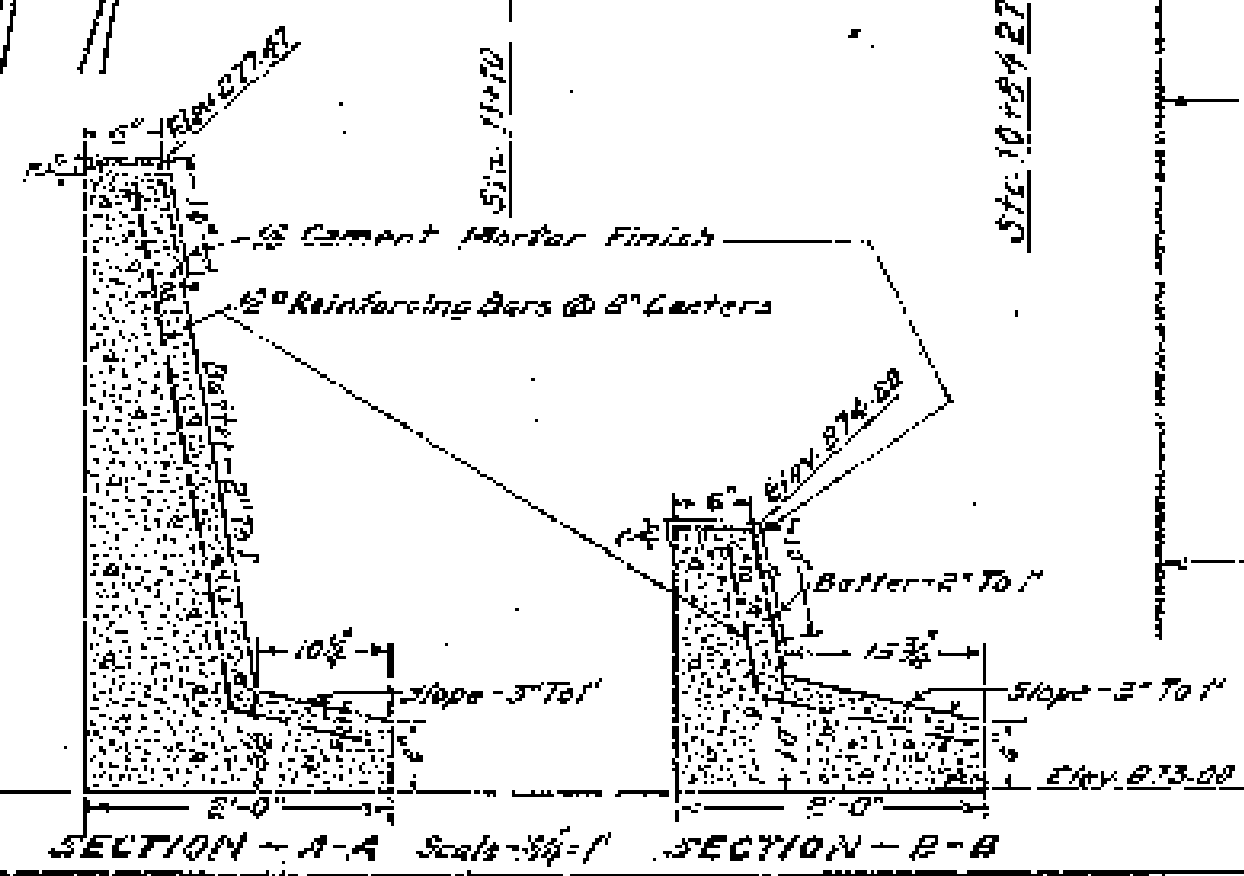
DETAILS OF CONSTRUCTION BETWEEN OLIVE STREET AND VINE STREET



DETAILS OF CONCRETE RETAINING WALL AT OLIVE STREET



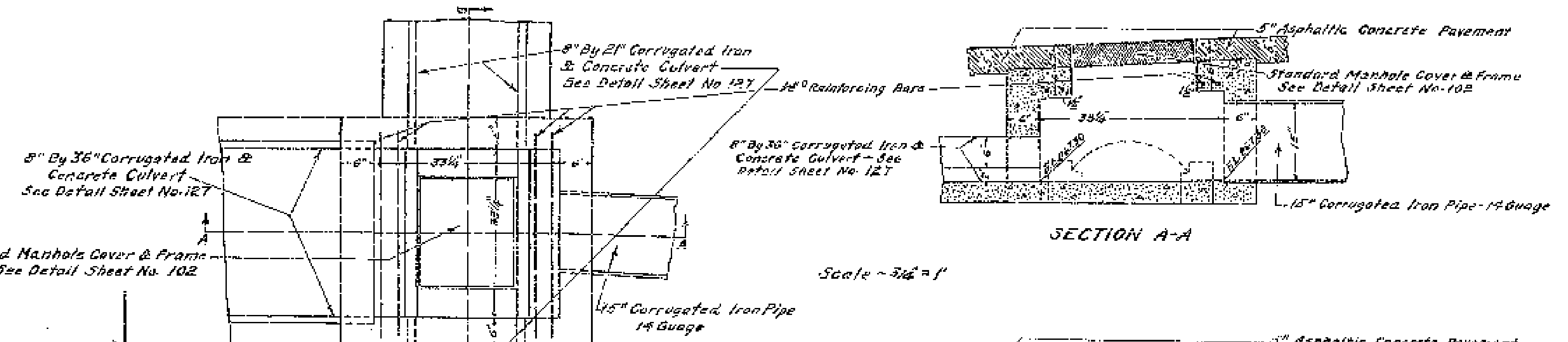
ELEVATION OF VERTICAL FACE Scale - 3/4" = 1'



SECTION - A-A Scale - 3/4" = 1' SECTION - B-B

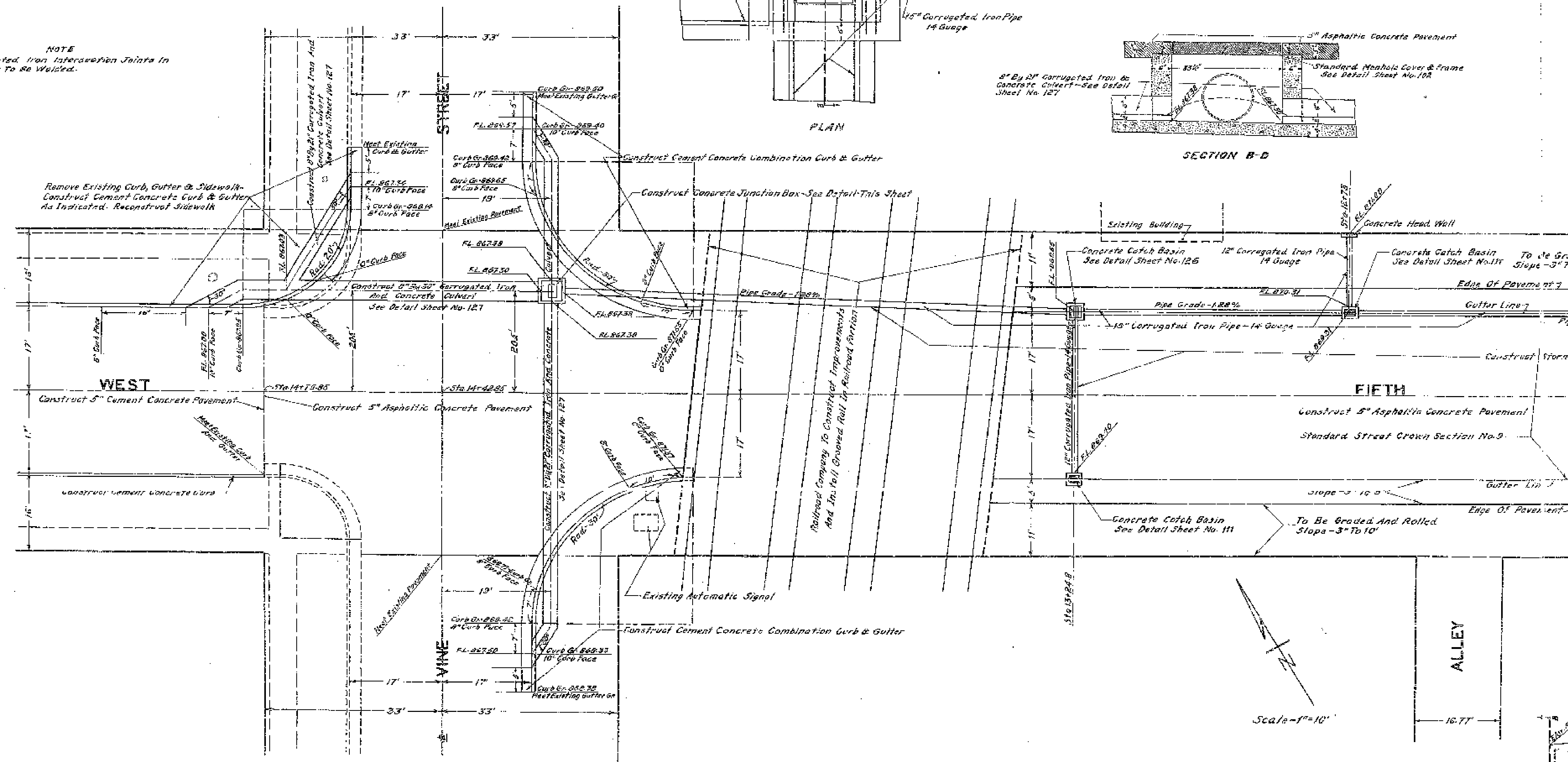
9500

DETAILS OF CONCRETE JUNCTION BOX AT VINE STREET



NOTE  
Where Existing Gutter is Replaced With New, Connect Existing Pavement To New Gutter With Asphaltic Concrete Patch.

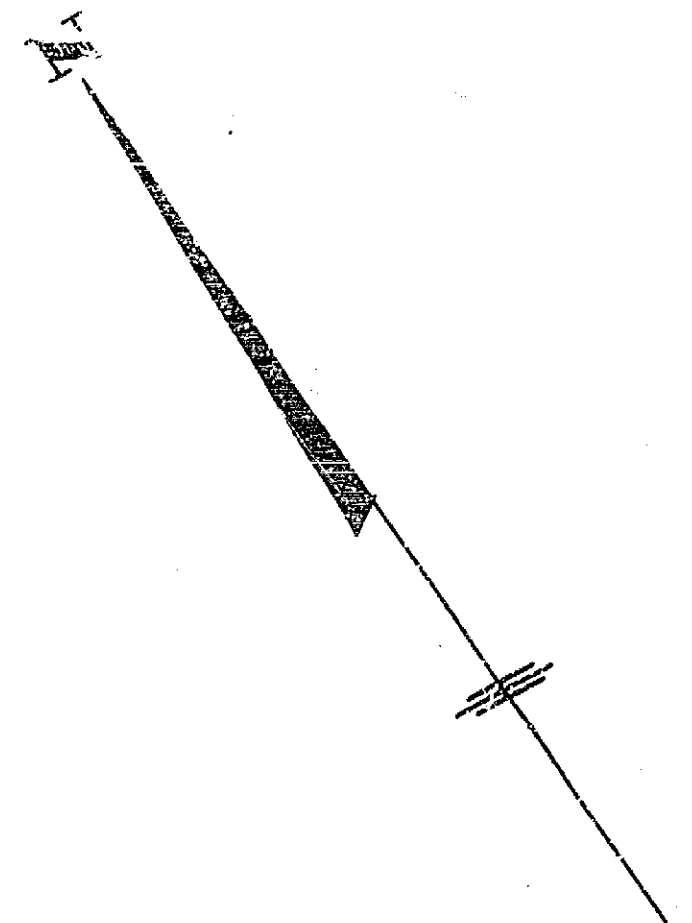
NOTE  
Corrugated Iron Interception Joints In Culverts To Be Welded.



Remove Existing Curb, Gutter & Sidewalk - Construct Cement Concrete Curb & Gutter As Indicated. Reconstruct Sidewalk

Railroad Company To Construct Improvements And Install Grooved Roll Up Railroad Switch

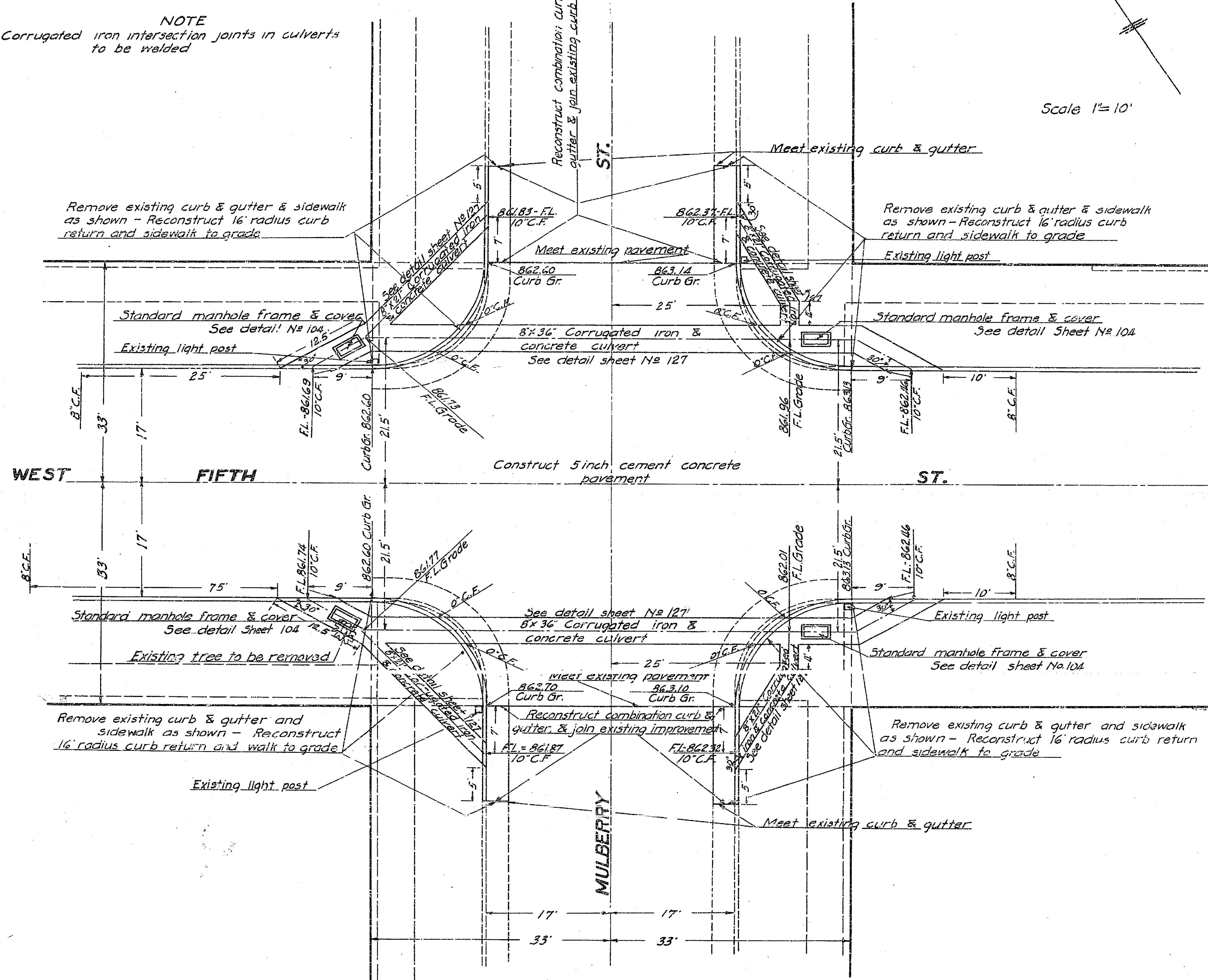
# DETAILS OF INTERSECTION OF WEST FIFTH STREET AND MULBERRY ST.



Scale 1"=10'

**NOTE**  
Where existing gutter is replaced with new, connect existing pavement to new gutter with asphaltic concrete patch

**NOTE**  
Corrugated iron intersection joints in culverts to be welded



PLAN NO.  
SHEET 5 OF 11 SHEETS  
ENGINEERING DEPT. CITY OF RIVERSIDE

9500





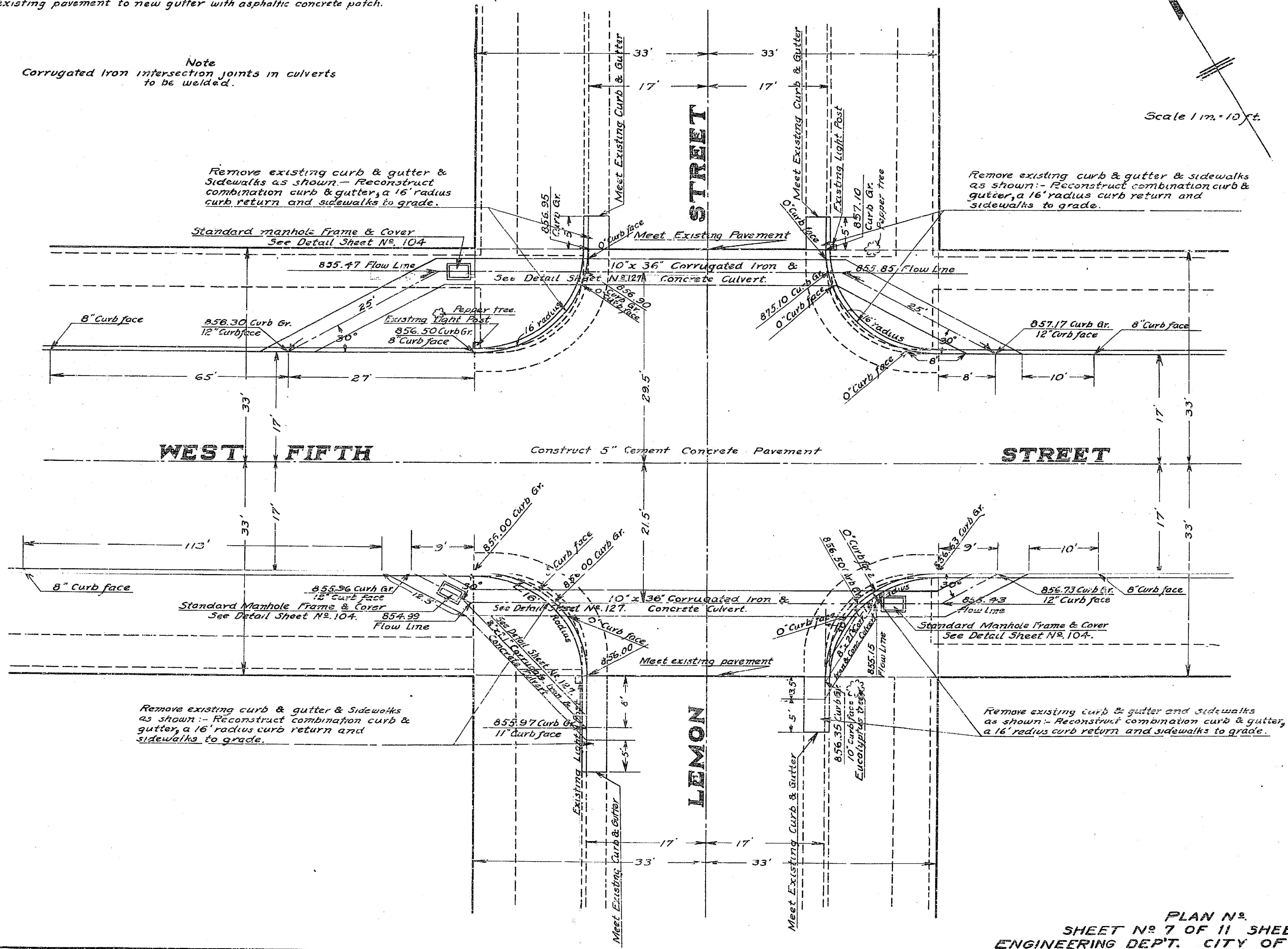
# DETAILS OF INTERSECTION OF WEST FIFTH STREET AND LEMON STREET

Note  
Where existing gutter is replaced with new, connect existing pavement to new gutter with asphaltic concrete patch.

Note  
Corrugated Iron intersection joints in culverts to be welded.

Remove existing curb & gutter & Sidewalks as shown. - Reconstruct combination curb & gutter, a 16' radius curb return and sidewalks to grade.

Remove existing curb & gutter & sidewalks as shown. - Reconstruct combination curb & gutter, a 16' radius curb return and sidewalks to grade.



Remove existing curb & gutter & Sidewalks as shown. - Reconstruct combination curb & gutter, a 16' radius curb return and sidewalks to grade.

Remove existing curb & gutter and sidewalks as shown. - Reconstruct combination curb & gutter, a 16' radius curb return and sidewalks to grade.

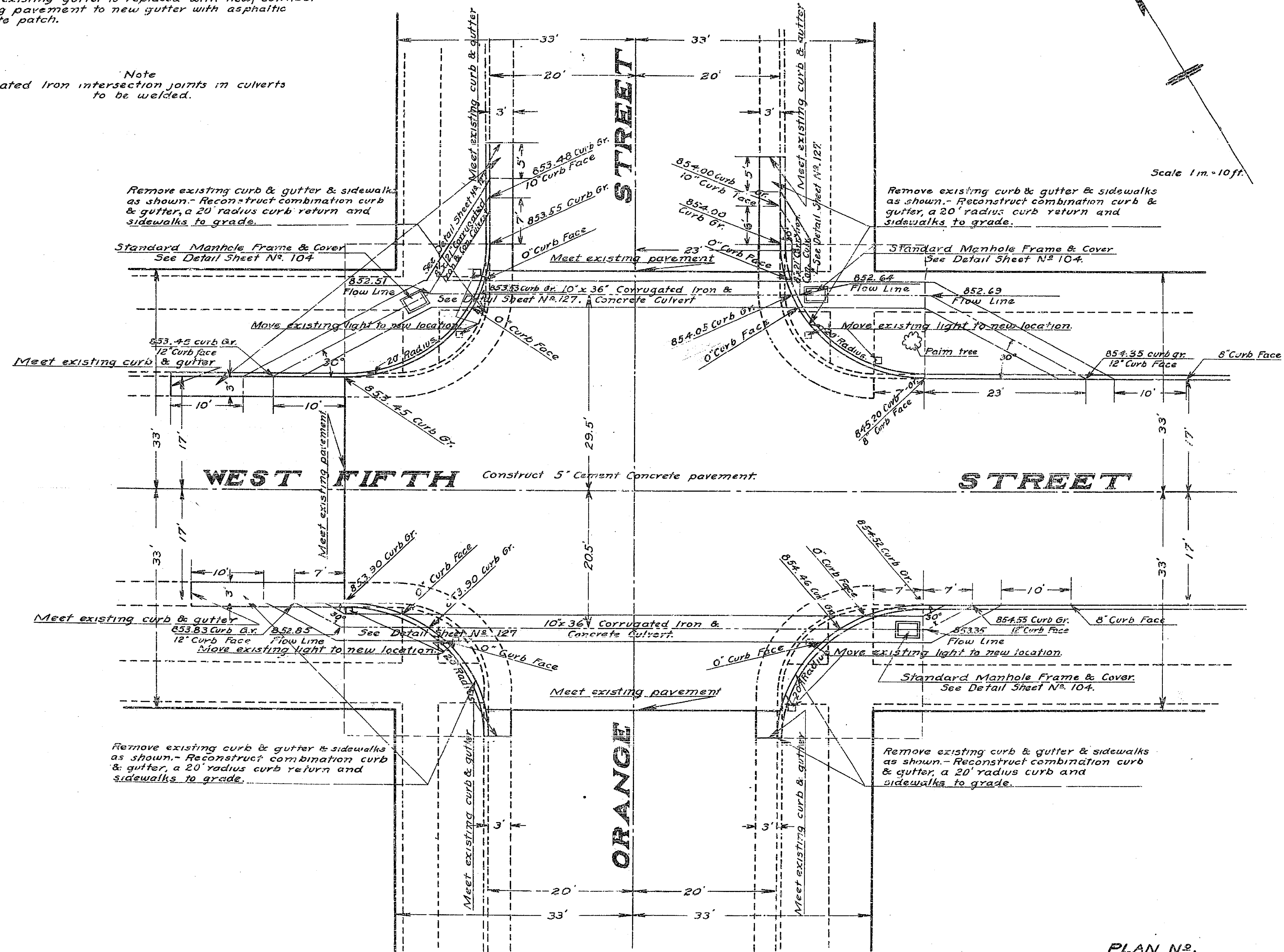
PLAN No.  
SHEET No. 7 OF 11 SHEETS  
ENGINEERING DEPT. CITY OF RIVERSIDE

9500

# DETAILS OF INTERSECTION OF WEST FIFTH STREET AND ORANGE STREET

Note  
Where existing gutter is replaced with new, connect existing pavement to new gutter with asphaltic concrete patch.

Note  
Corrugated Iron intersection joints in culverts to be welded.



PLAN No.  
SHEET No. 8 OF 11 SHEETS  
ENGINEERING DEPT. CITY OF RIVERSIDE

7500

**MISSING**

**MISSING**

**MISSING**