

# PLANS AND PROFILES

OF THE PROPOSED IMPROVEMENT OF  
**PARK AVENUE**  
 FROM EIGHTH STREET TO TENTH STREET

ENGINEERING DEPT. CITY OF RIVERSIDE JULY, 1930

PLANS, PROFILES AND MAPS NUMBER 953 CONSISTING OF 6 SHEETS  
 SHEETS NUMBER 1 & 2 IMPROVEMENT OF PARK AVE.  
 SHEETS NUMBER 3, 4, 5 & 6 MAP OF THE DISTRICT TO BE ASSESSED FOR THE IMPROVEMENT

Constructed by contract no. 1030

INSTRUCTIONS TO CONTRACTORS —  
 FOLDERS CONTAINING INSTRUCTIONS TO CONTRACTORS ARE A PART  
 OF THESE PLANS AND SPECIFICATIONS  
 Cement sidewalk at private driveways and public alleys, indicated on plans  
 shall be six inches in thickness

ELEVATIONS SHOWN HEREON ARE U.S.G.S. DATUM

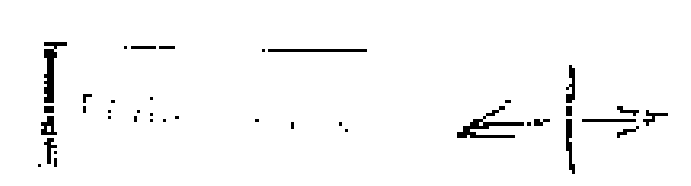
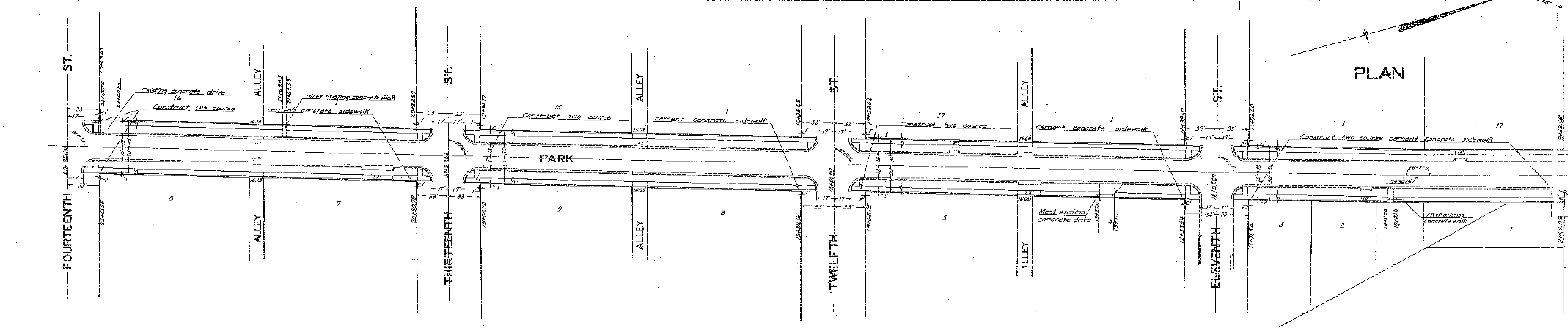
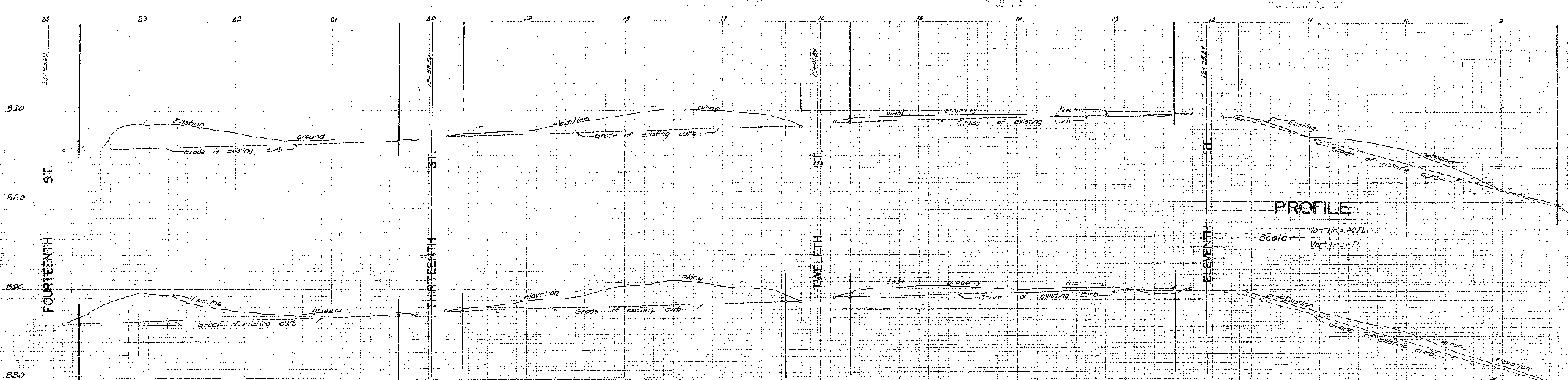
FIELD BOOKS  
 BOOK 219 PAGE 1 TO 87

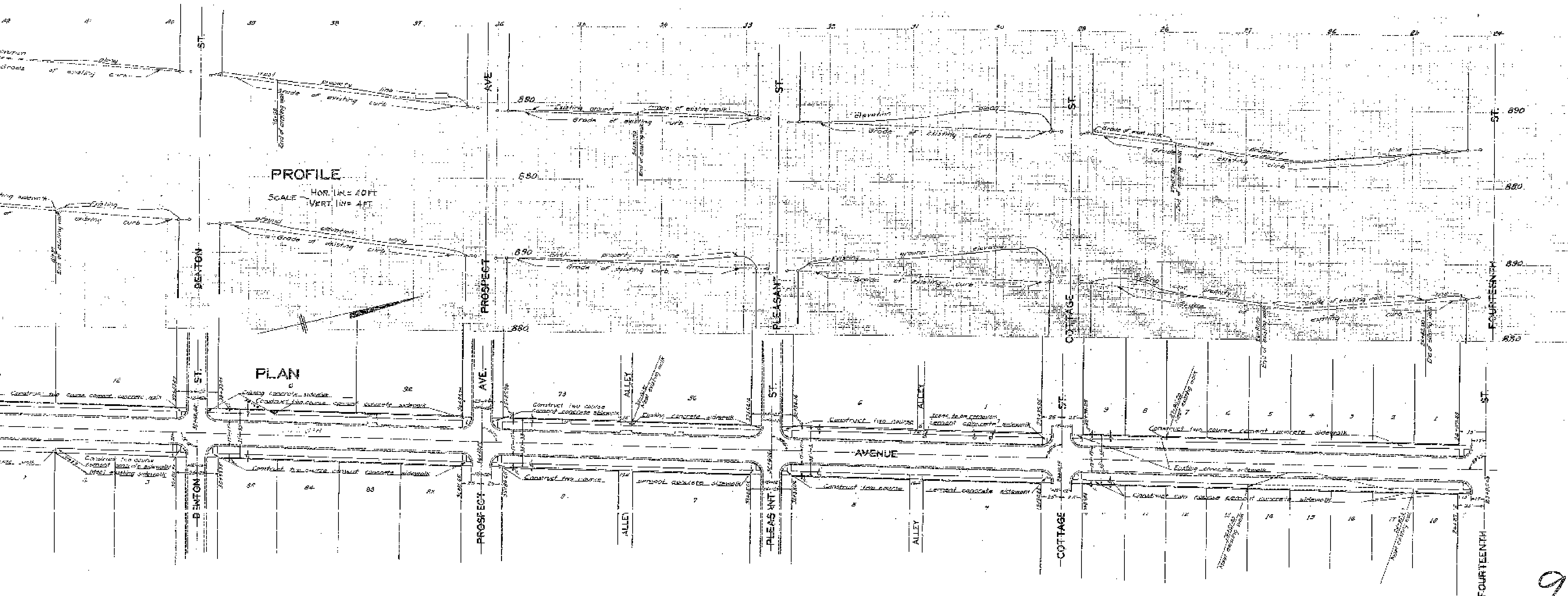
ADOPTED BY THE MAYOR AND COUNCIL OF THE CITY  
 OF RIVERSIDE THIS 22<sup>ND</sup> DAY OF JULY 1930

*Stanley*  
 CLERK OF THE CITY OF RIVERSIDE

953

← → GRAPHIC SCALE

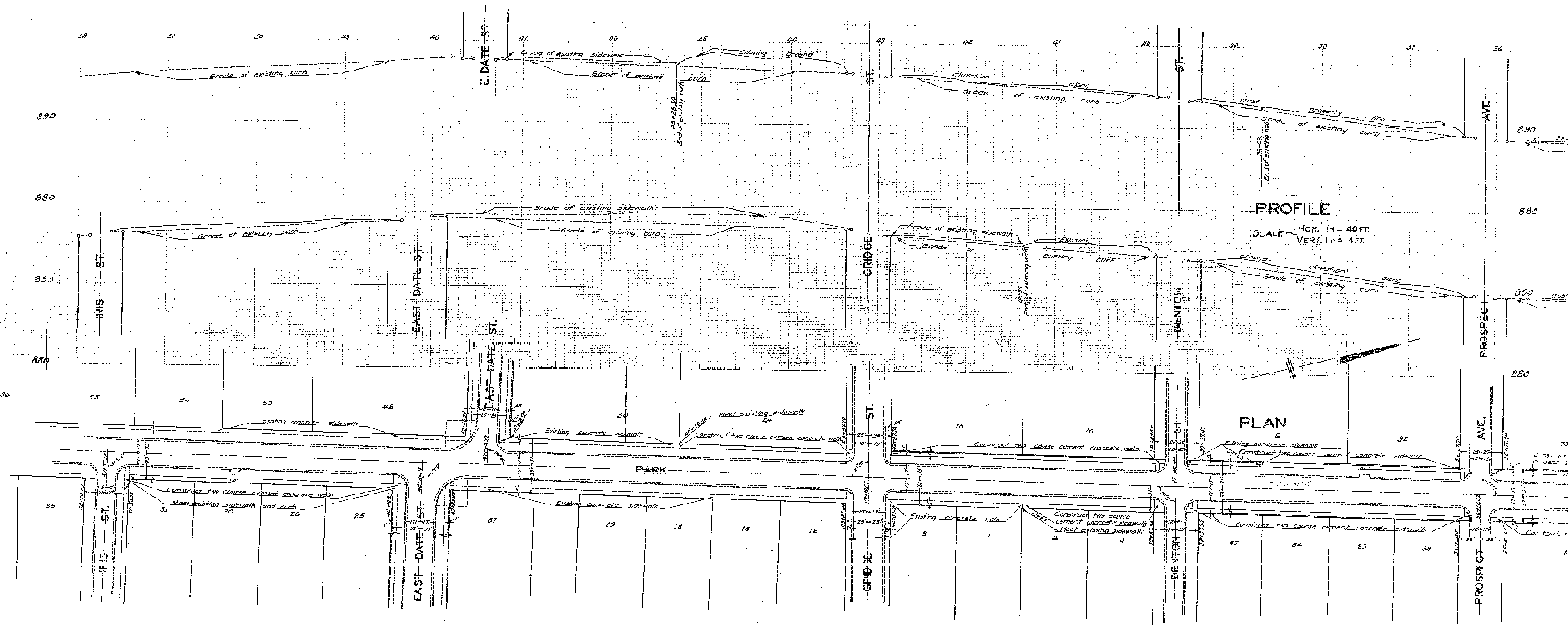




953

PLAN NO.  
 SHEET 2 OF 6 SHEETS  
 ENGINEERING DEPT. CITY OF RIVER SIDE

←→ 1" = 100' 0"



**PROFILE**  
 SCALE: Hor. 1 in = 40 ft  
 Vert. 1 in = 4 ft

**PLAN**



**MISSING**

**MISSING**

**MISSING**

**MISSING**