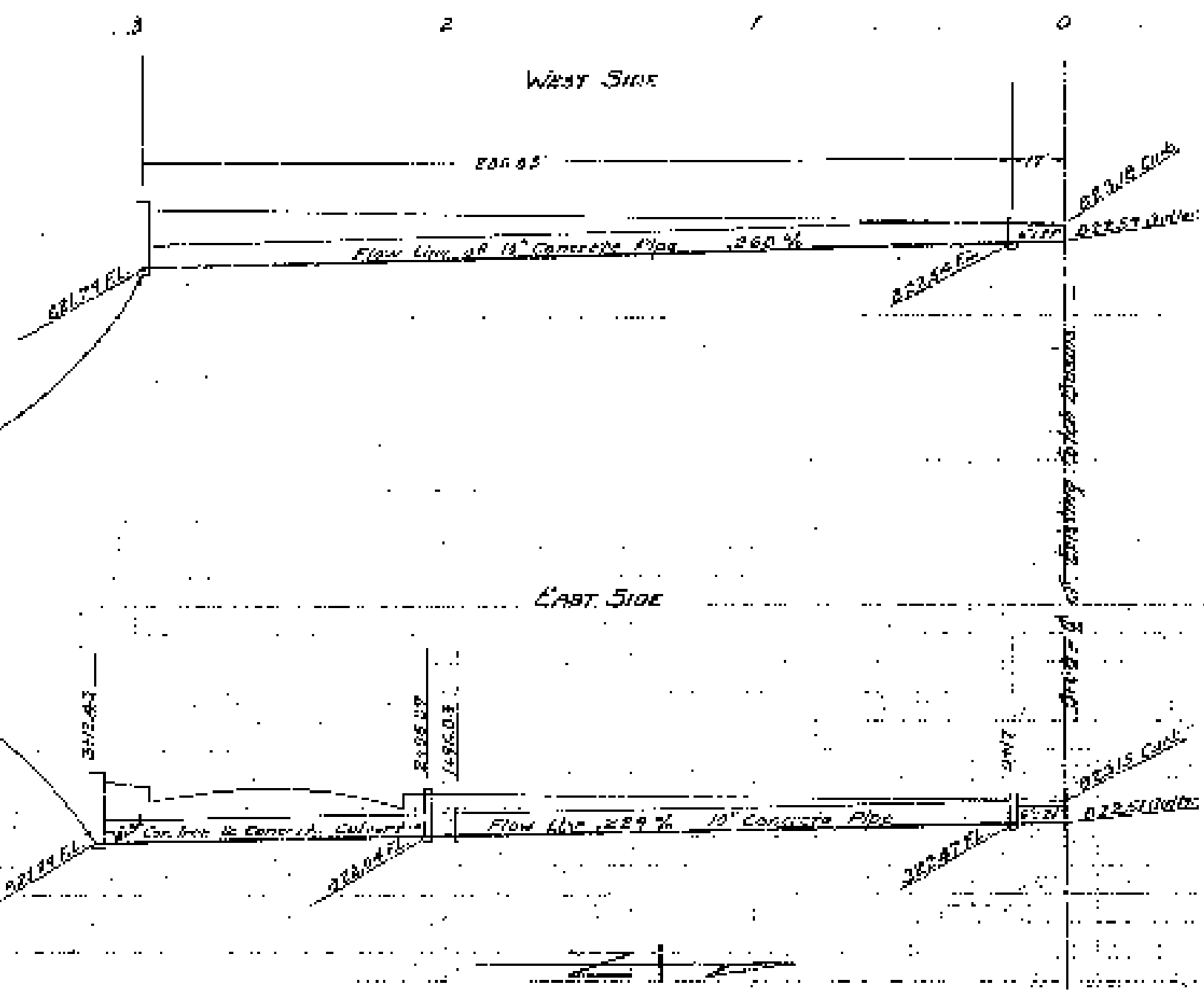


**PROFILE**  
Scale - 1" = 40'



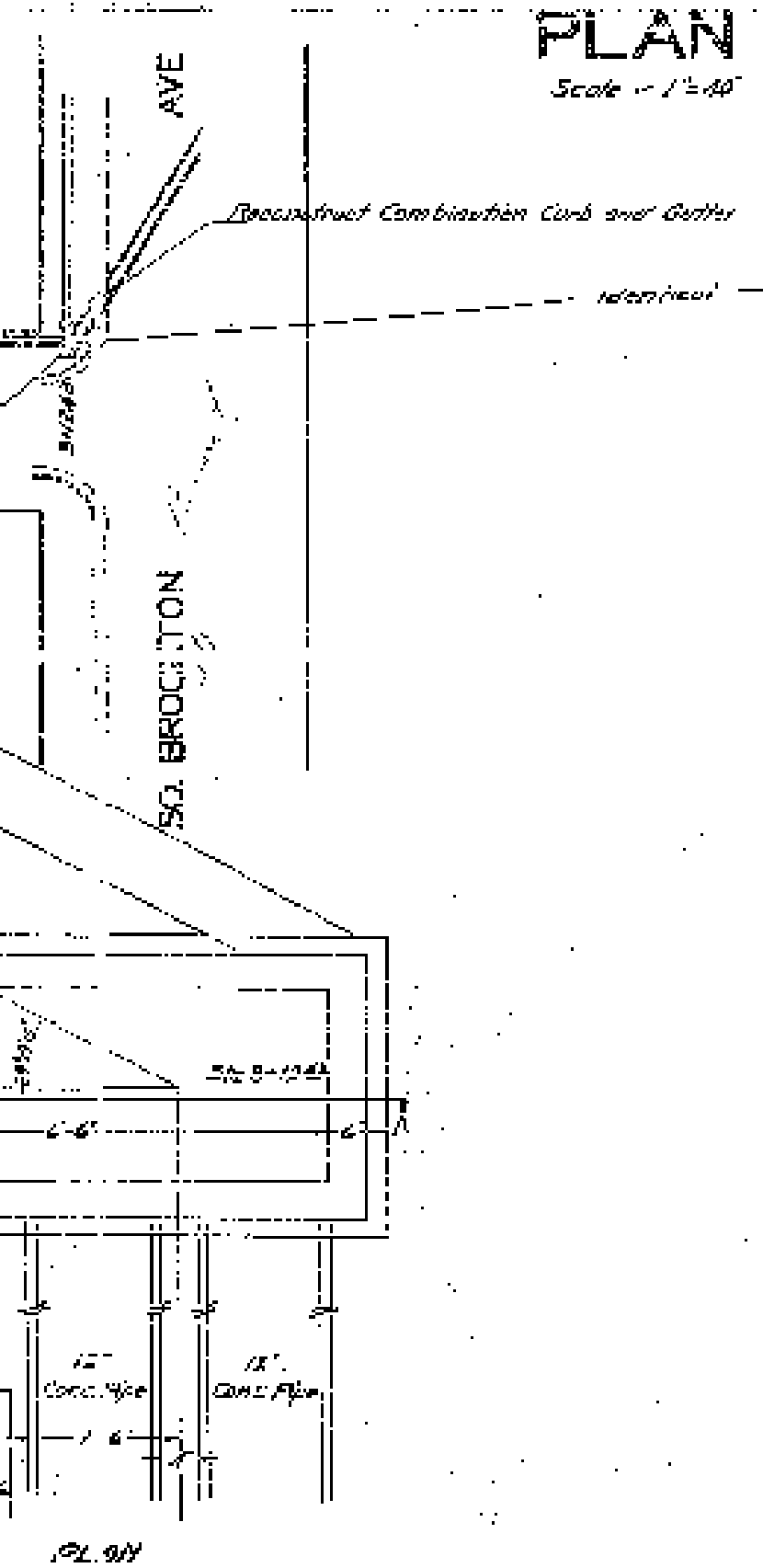
**PLANS AND PROFILES**  
OF THE PROPOSED STORM DRAIN IMPROVEMENT  
IN  
**SOUTH BROCKTON AVENUE, NELSON STREET AND NEW MAGNOLIA AVENUE.**

**SOUTH BROCKTON AVENUE**  
FROM NELSON STREET NORTHERLY 360 FEET  
**NELSON STREET**  
FROM SOUTH BROCKTON AVENUE TO NEW MAGNOLIA AVENUE  
**NEW MAGNOLIA AVENUE**  
FROM NELSON STREET NORTHERLY 25 FEET

ENGINEERING DEPT. CITY OF RIVERSIDE AUGUST 1930

PLANS, PROFILES AND MAPS NUMBER 954 CONSISTING OF 8 SHEETS  
SHEET NUMBERED 1 MAP OF THE STORM DRAIN IMPROVEMENT IN SOUTH BROCKTON AVENUE, NELSON STREET AND NEW MAGNOLIA AVENUE.  
SHEETS NUMBERED 2, 3, 4 & 5 MAP OF THE DISTRICT TO BE ASSESSED FOR THE IMPROVEMENT.  
SHEETS NUMBERED 124, 127 & 129 DETAIL SHEETS.

**PLAN**  
Scale - 1" = 40'



**DETAILS OF CONCRETE**  
BOX STA. 1+96.03  
Scale - 1/8" = 1'

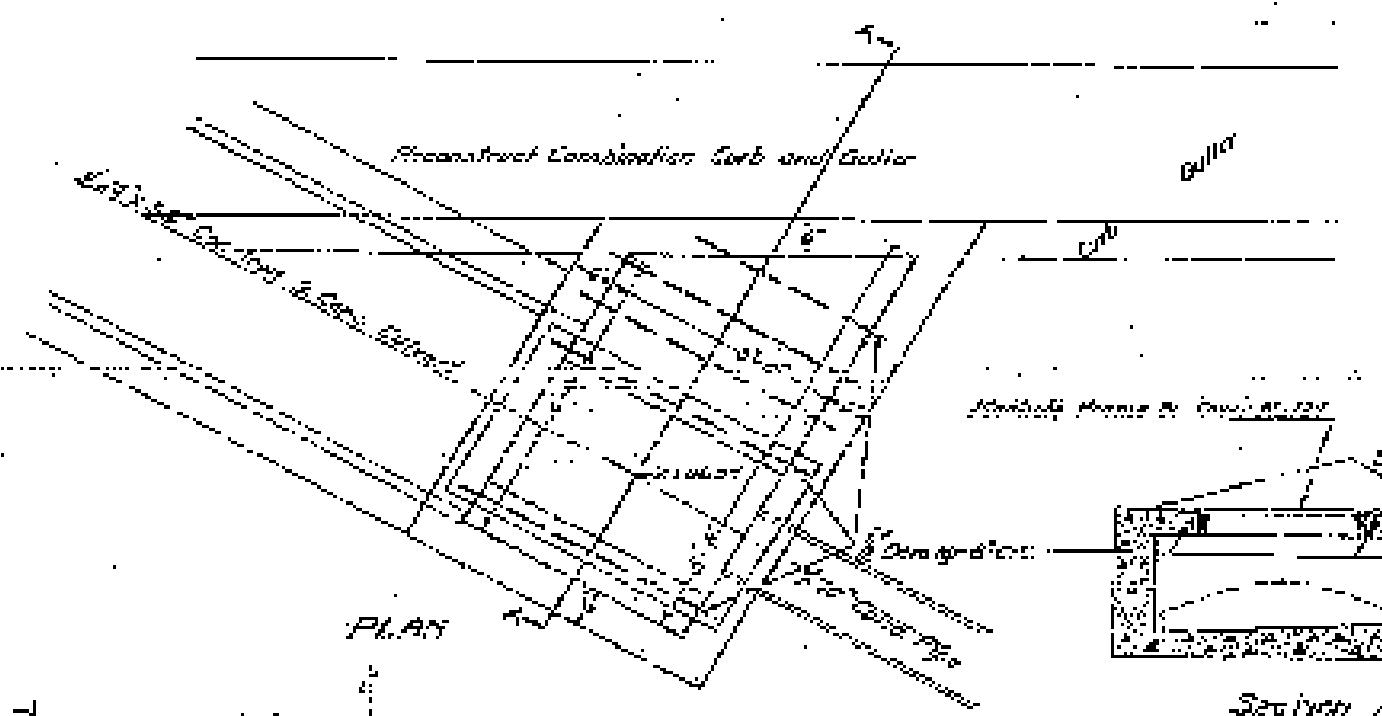


**Cross Section of 60\"/>**

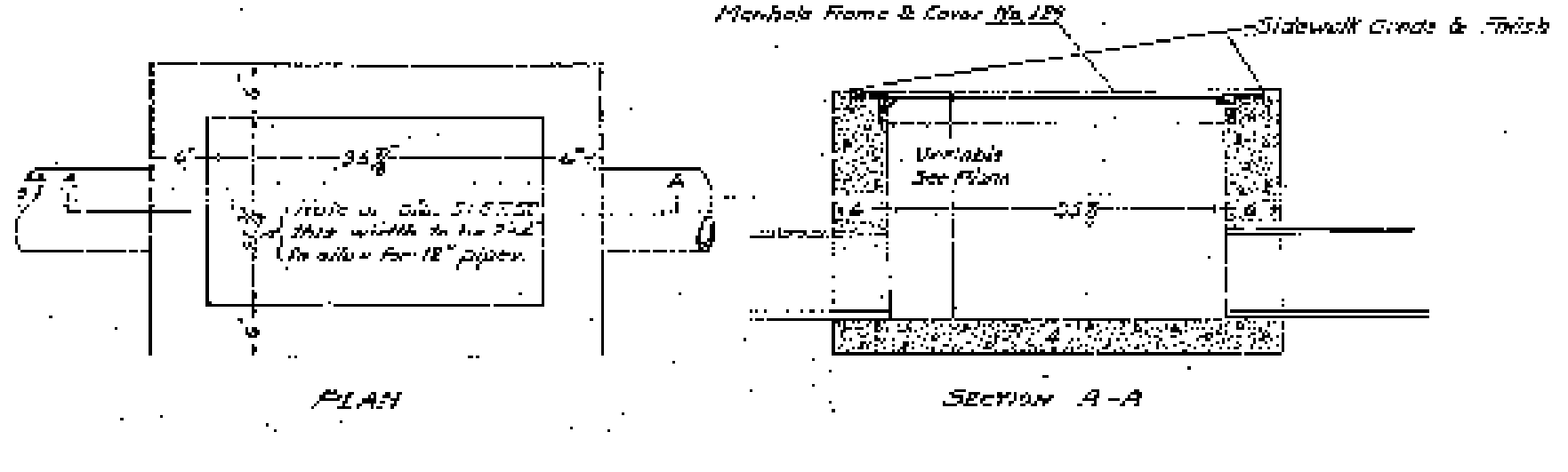


ELEVATIONS SHOWN HEREON ARE U.S.G.S. DATUM

**DETAILS OF CONCRETE CATCH BASIN & JUNCTION**  
BOX STA. 2+08.39  
Scale - 1/8" = 1'



**DETAILS OF CONCRETE JUNCTION BOXES**  
Scale - 1/8" = 1'



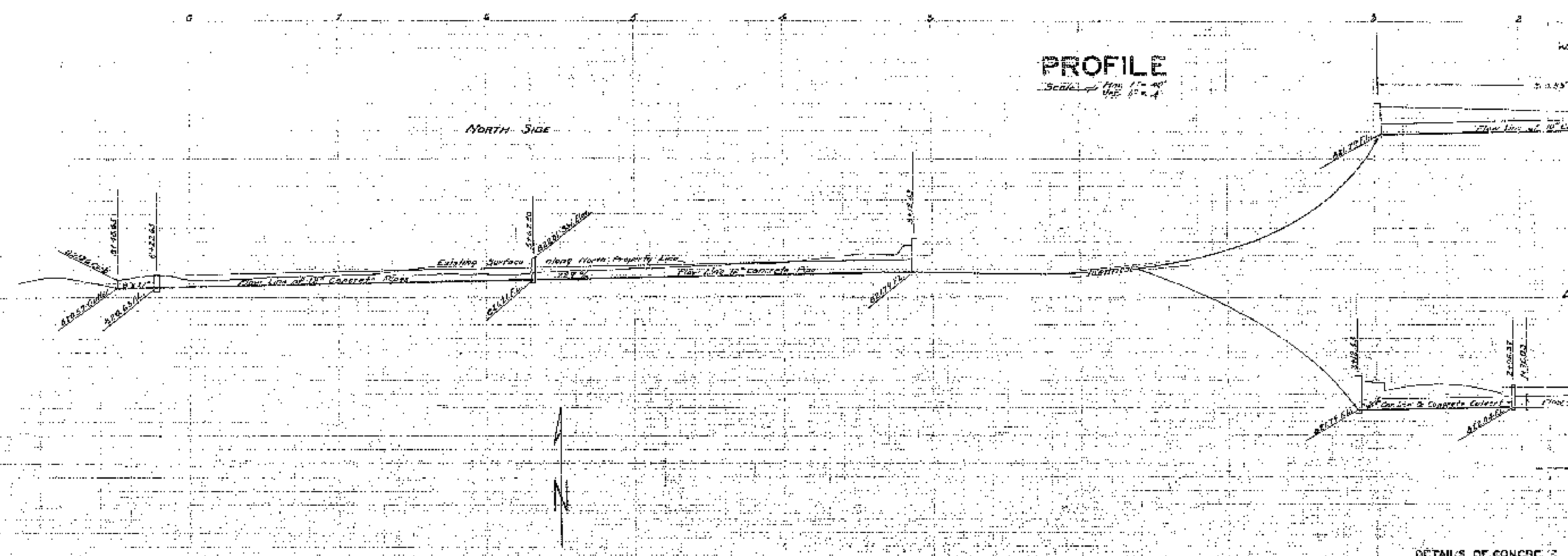
ADOPTED BY THE MAYOR AND COUNCIL OF THE CITY OF RIVERSIDE THIS 30 DAY OF August 1930.

*Richard Parilla*  
CITY CLERK CITY OF RIVERSIDE

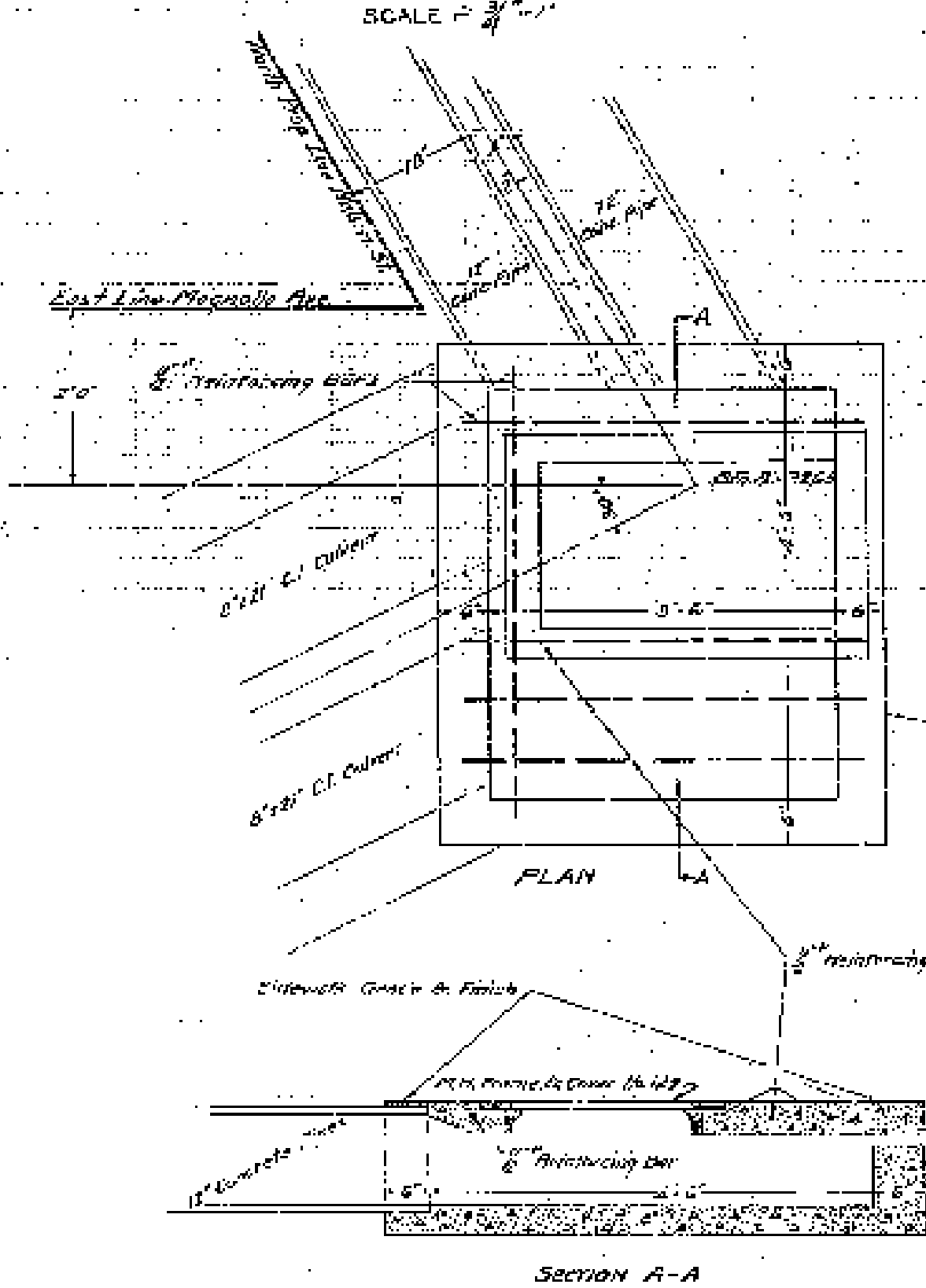
954

PLAN NUMBER 954  
SHEET 1 OF 8 SHEETS

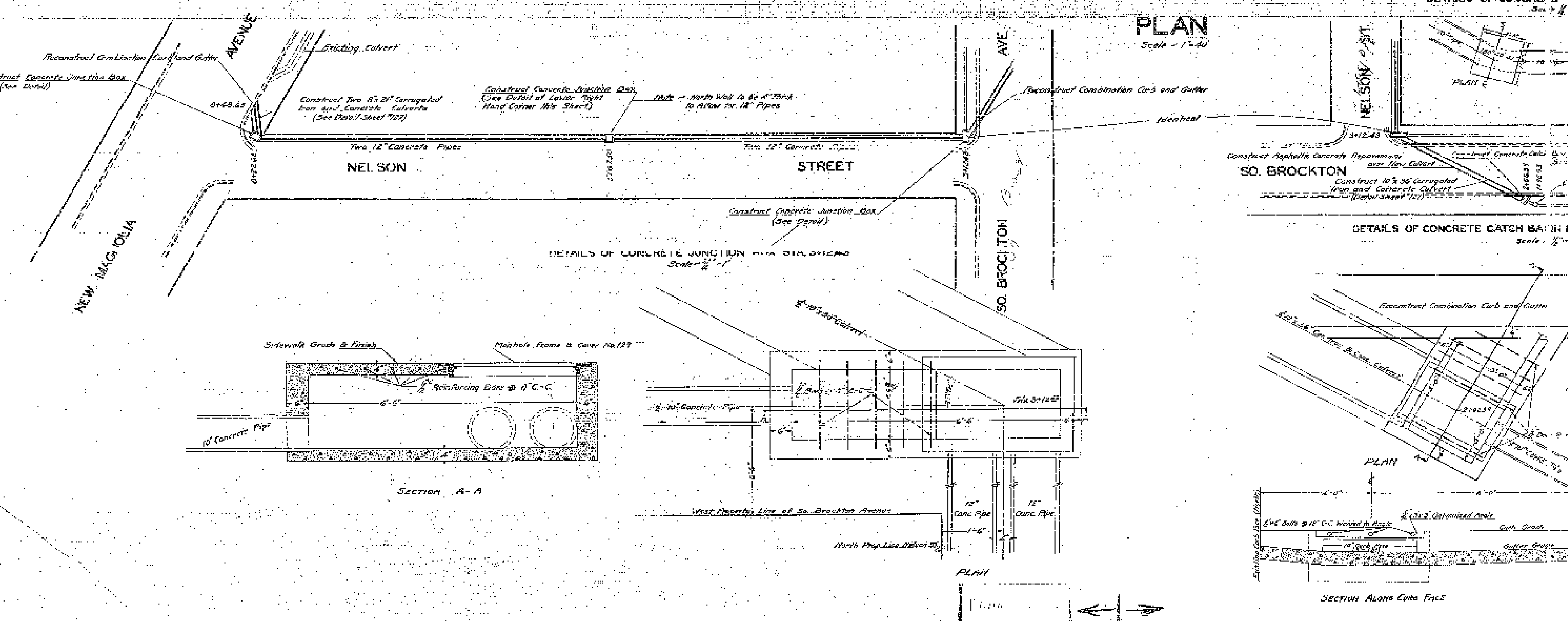
**PROFILE**  
Scale 1" = 4'



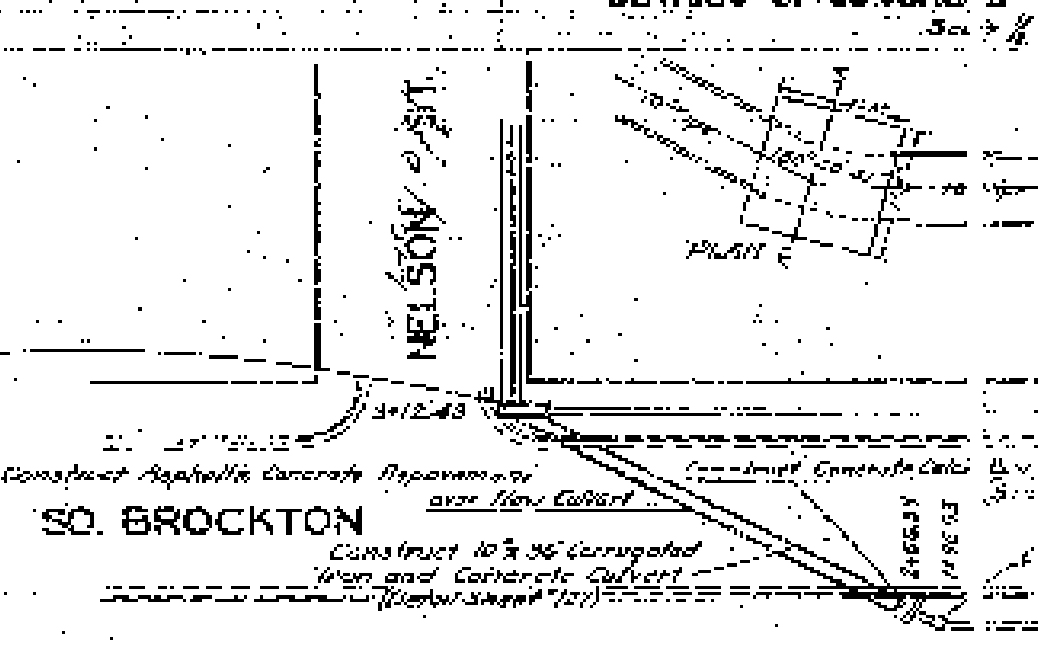
**DETAILS OF CONCRETE JUNCTION BOX STA 8+23.85**  
Scale 1" = 1'



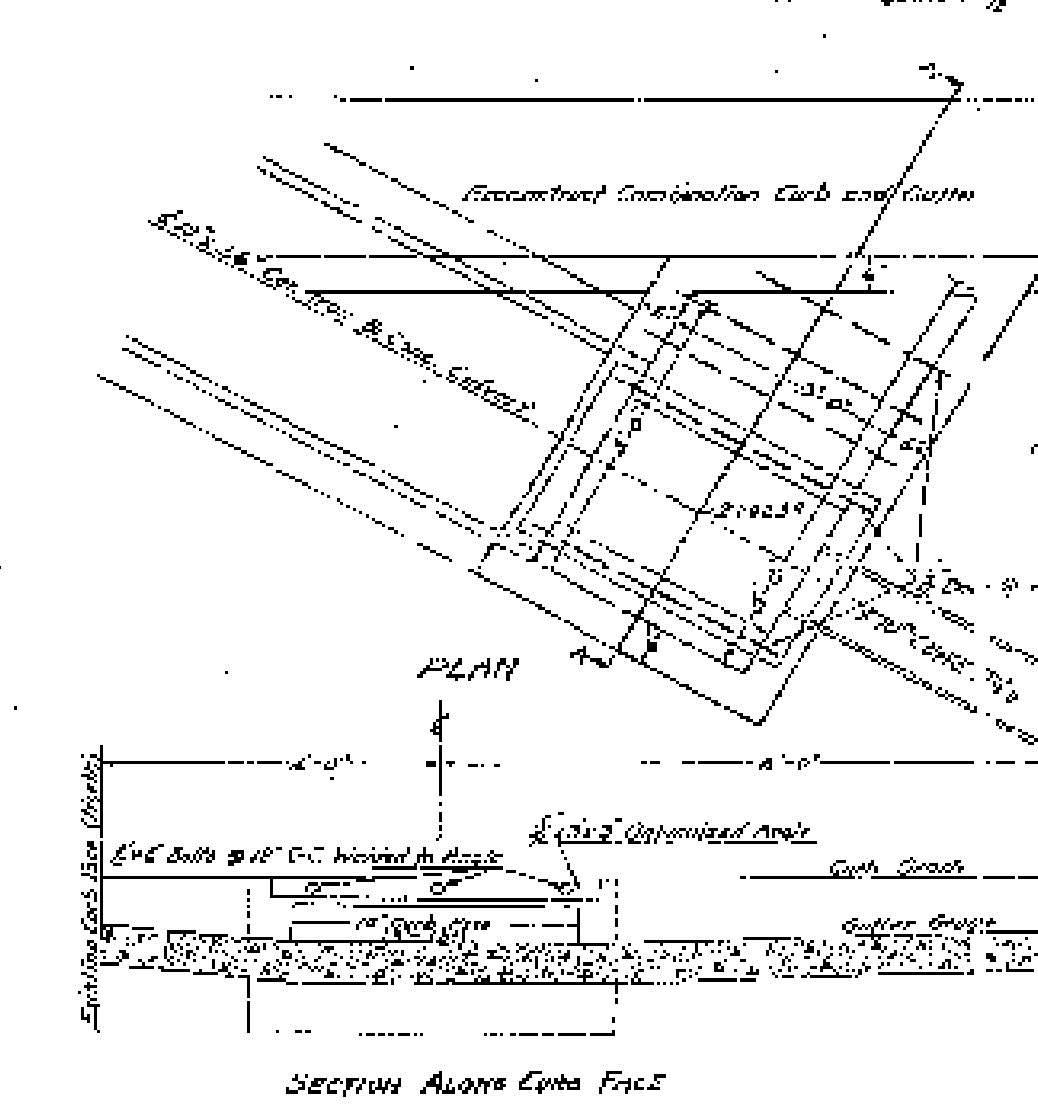
**PLAN**  
Scale 1" = 40'



**DETAILS OF CONCRETE**  
Scale 1" = 1'



**DETAILS OF CONCRETE CATCH BASIN & JUNCTION BOX**  
Scale 1" = 1'



**SECTION A-A**

**PLAN**

**SECTION ALONG CURB FACE**