

173
 173
 242
 11.30
 900.77
 2.4
 900.77

PLANS AND PROFILES

OF THE PROPOSED STREET IMPROVEMENT OF

BLAINE STREET

BETWEEN EUCALYPTUS AVENUE AND ITS WESTERLY TERMINATION

AND

EAST THIRD STREET

BETWEEN ITS EASTERLY TERMINATION AND PACHAPPA AVENUE

AND A PORTION OF

COMER AVENUE

ENGINEERING DEPARTMENT, CITY OF RIVERSIDE NOVEMBER 1930

PLANS, PROFILES AND MAPS NUMBER 958-A~CONSISTING OF 7 SHEETS

SHEETS NUMBERED 1,2 STREET IMPROVEMENT OF BLAINE STREET BETWEEN EUCALYPTUS AVENUE AND ITS WESTERLY TERMINATION AND EAST THIRD STREET BETWEEN ITS EASTERLY TERMINATION AND PACHAPPA AVENUE AND A PORTION OF COMER AVENUE

SHEETS NUMBERED 124, 125 MAP OF THE DISTRICT TO BE ASSESSED FOR THE IMPROVEMENTS

SHEETS NUMBERED 103, 108, 129 STANDARD DETAIL SHEETS

ELEVATIONS SHOWN HEREON ARE U.S.G.S. DATUM WHICH IS THE OFFICIAL CITY DATUM PLANE AS ESTABLISHED BY ORDINANCE NO 551 NEW SERIES

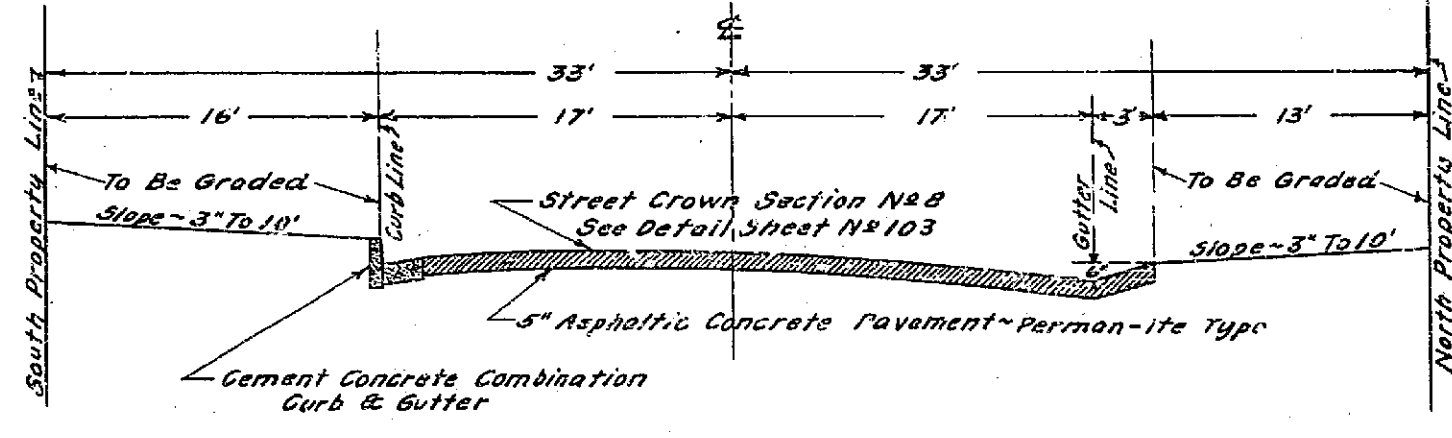
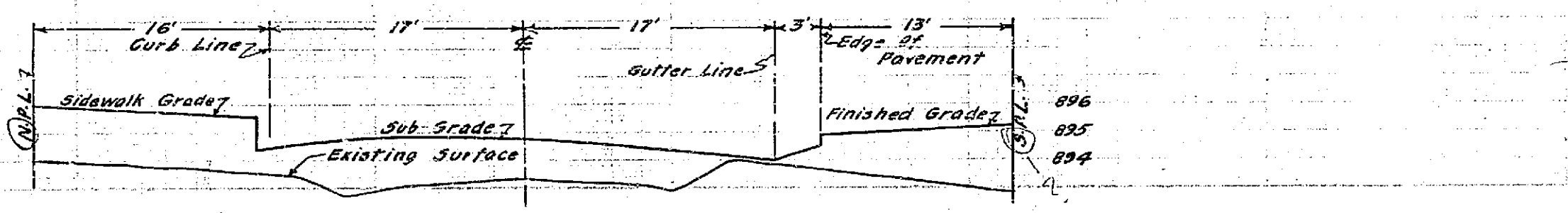
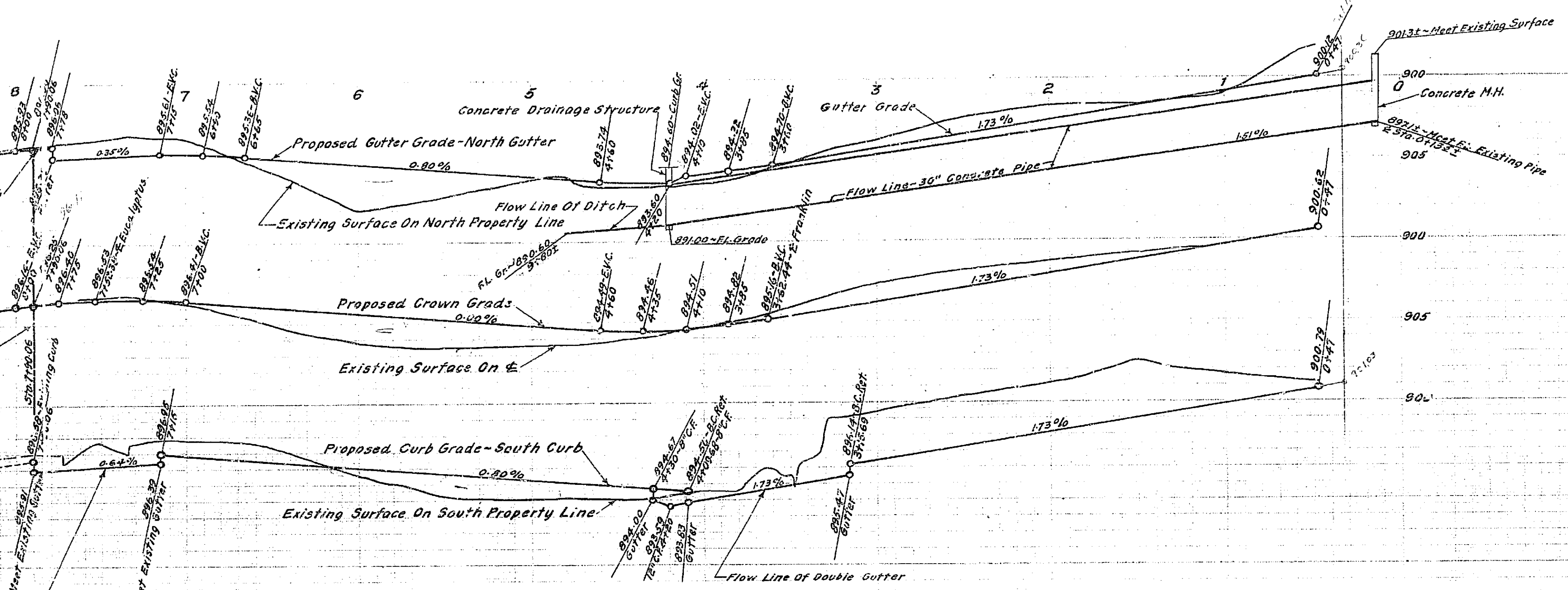
FIELD BOOKS
 BOOK 194 PAGES 34 TO 54
 BOOK 227 PAGES 2 TO 68

ADOPTED BY THE MAYOR AND COUNCIL OF THE CITY OF RIVERSIDE
 THIS 25TH DAY OF NOVEMBER 1930

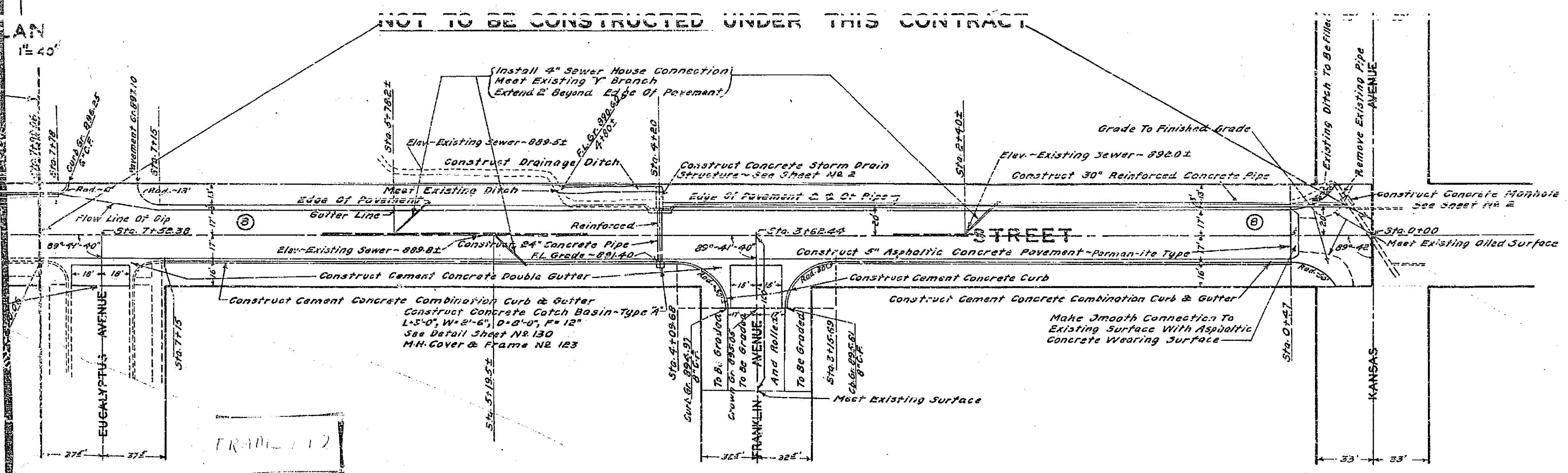
J. Wood
 CITY CLERK, CITY OF RIVERSIDE

958A

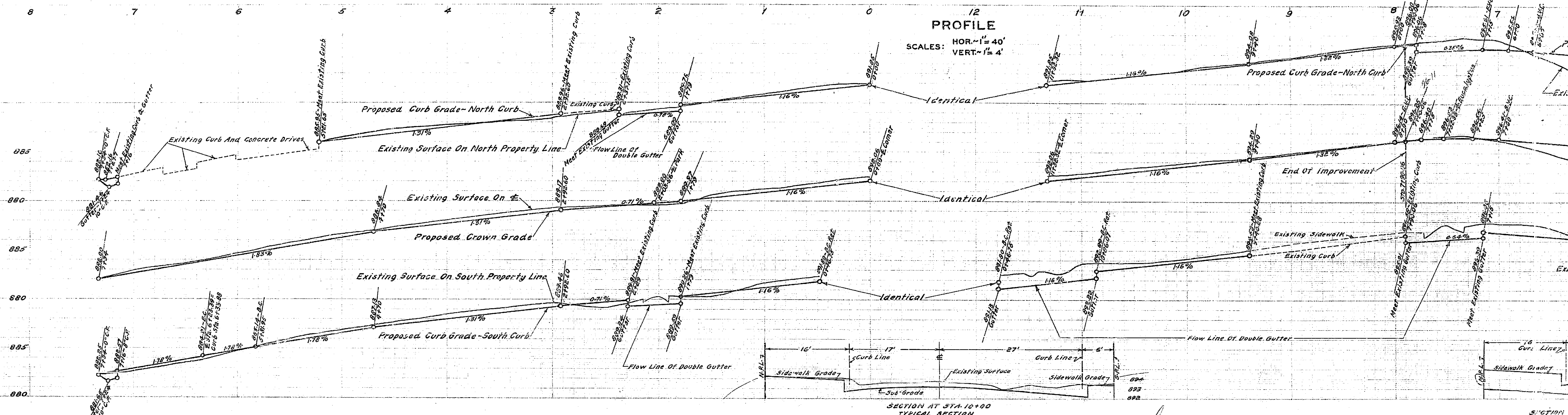
SHEET NO 1 OF 7



TYPICAL CROSS SECTION OF IMPROVEMENT BETWEEN KANSAS AVENUE AND EUCALYPTUS AVENUE



FRONT 112



See Pachappa Plans.

not constructed

