

MAP OF PROPOSED WIDENING OF ORANGE STREET BETWEEN EIGHTH AND ELEVENTH STREETS

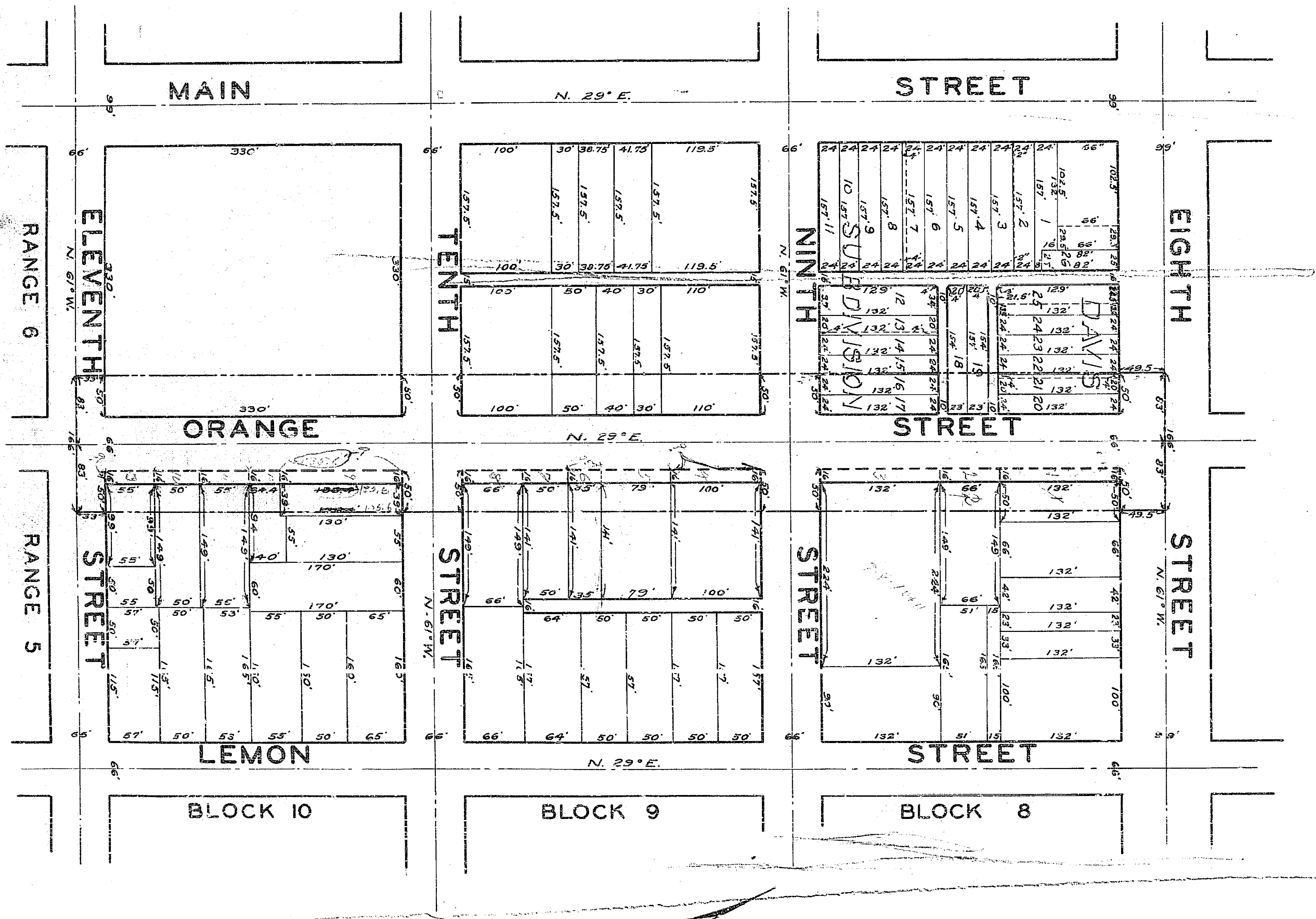
ENGINEERING DEPARTMENT CITY OF RIVERSIDE FEBRUARY 1930.

SHEET 1 OF 2 SHEETS.

SHOWING LAND TO BE TAKEN AND BOUNDRIES OF THE ASSESSMENT DISTRICT, UNDER THE
STREET OPENING ACT OF 1903, STATE OF CALIFORNIA.

ADOPTED BY THE MAYOR AND COUNCIL OF
THE CITY OF RIVERSIDE THIS 24th DAY OF FEBRUARY 1930.

[Signature]
CLERK OF THE CITY OF RIVERSIDE.



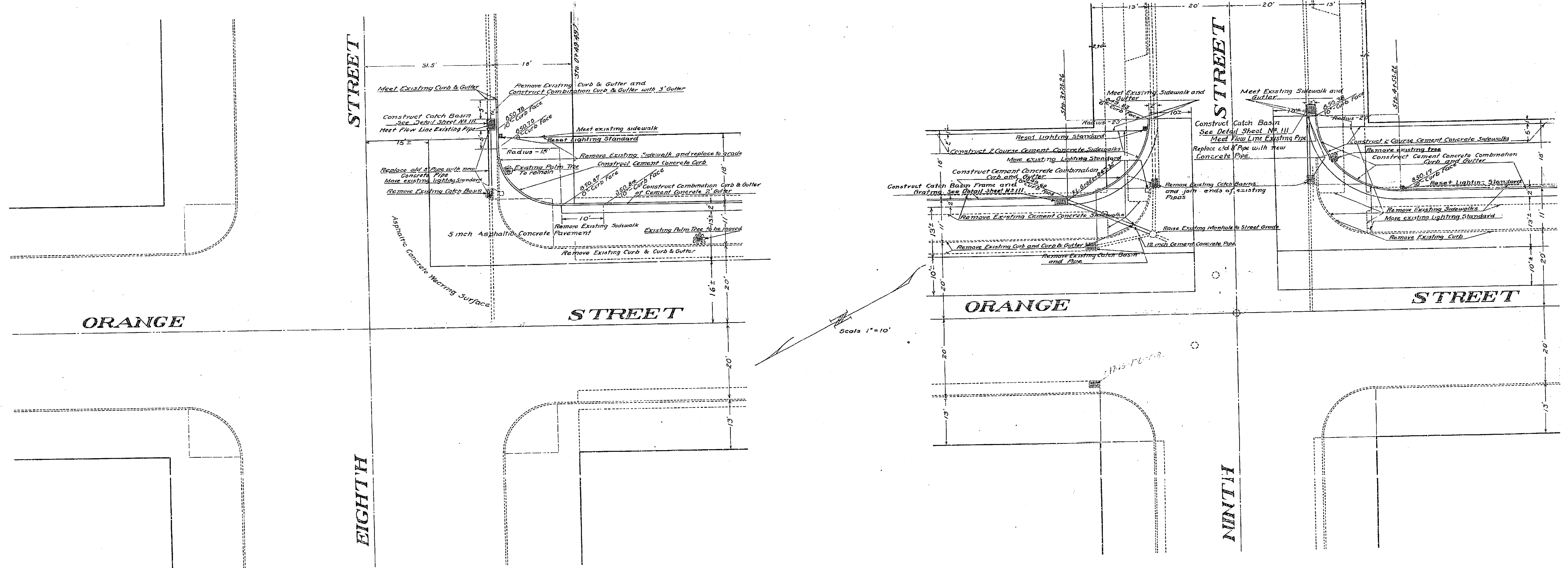
Scale 1 inch = 100 ft.

961A

DETAILS OF INTERSECTIONS OF ORANGE STREET AND EIGHTH AND NINTH STREETS

3/1
2/9
2/8

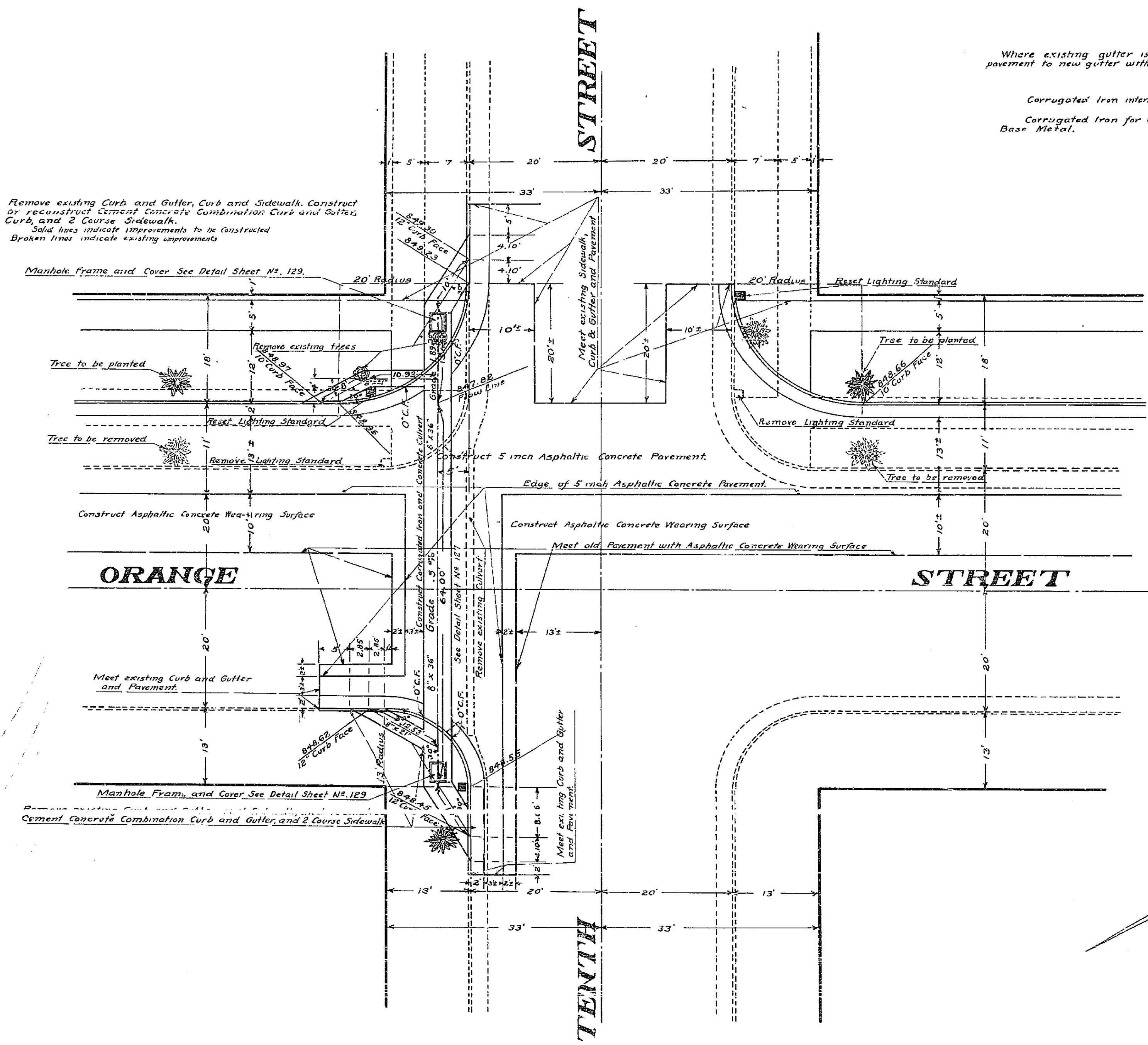
Note
Where existing gutter is replaced with new, connect existing pavement to new gutter with asphaltic concrete patch.



Scale 1"=10'

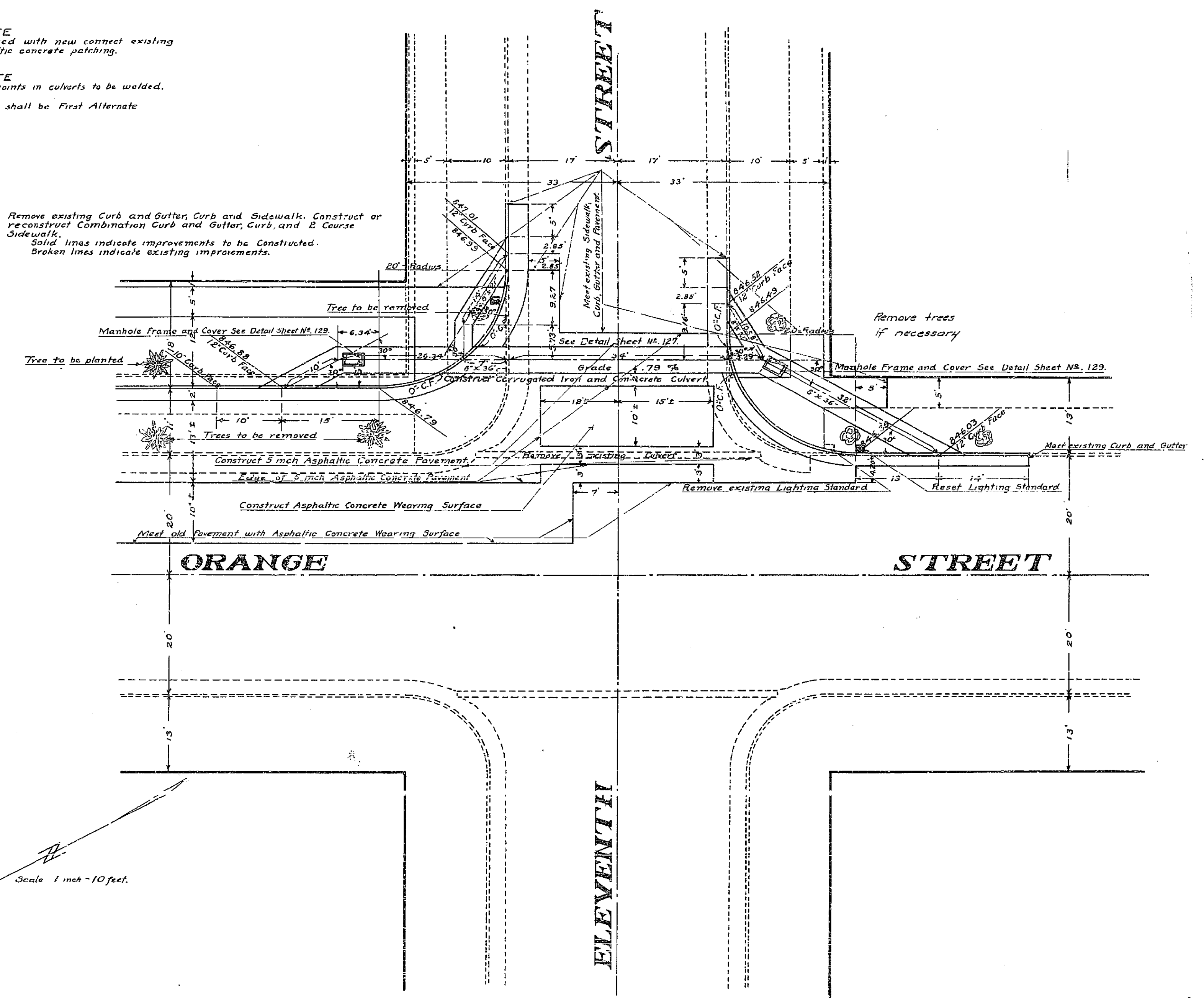
961C

DETAILS OF INTERSECTIONS OF ORANGE STREET AND TENTH AND ELEVENTH STREETS



NOTE
Where existing gutter is replaced with new connect existing pavement to new gutter with asphaltic concrete patching.

NOTE
Corrugated iron intersection joints in culverts to be welded.
Corrugated iron for culverts shall be First Alternate Base Metal.



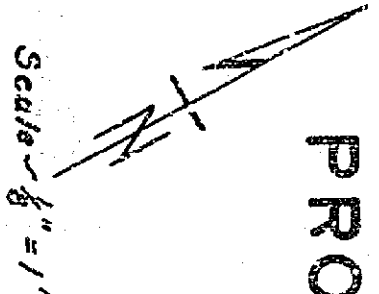
961C

PROPOSED WIDENING OF ORANGE STREET

BETWEEN EIGHTH AND ELEVENTH STREETS

ENGINEERING DEPARTMENT CITY OF RIVERSIDE.

SHEET No 2 OF 2 SHEETS.



Scale - 1/8" = 1'

40 ft

EIGHTH STREET

Center Line

49.5'

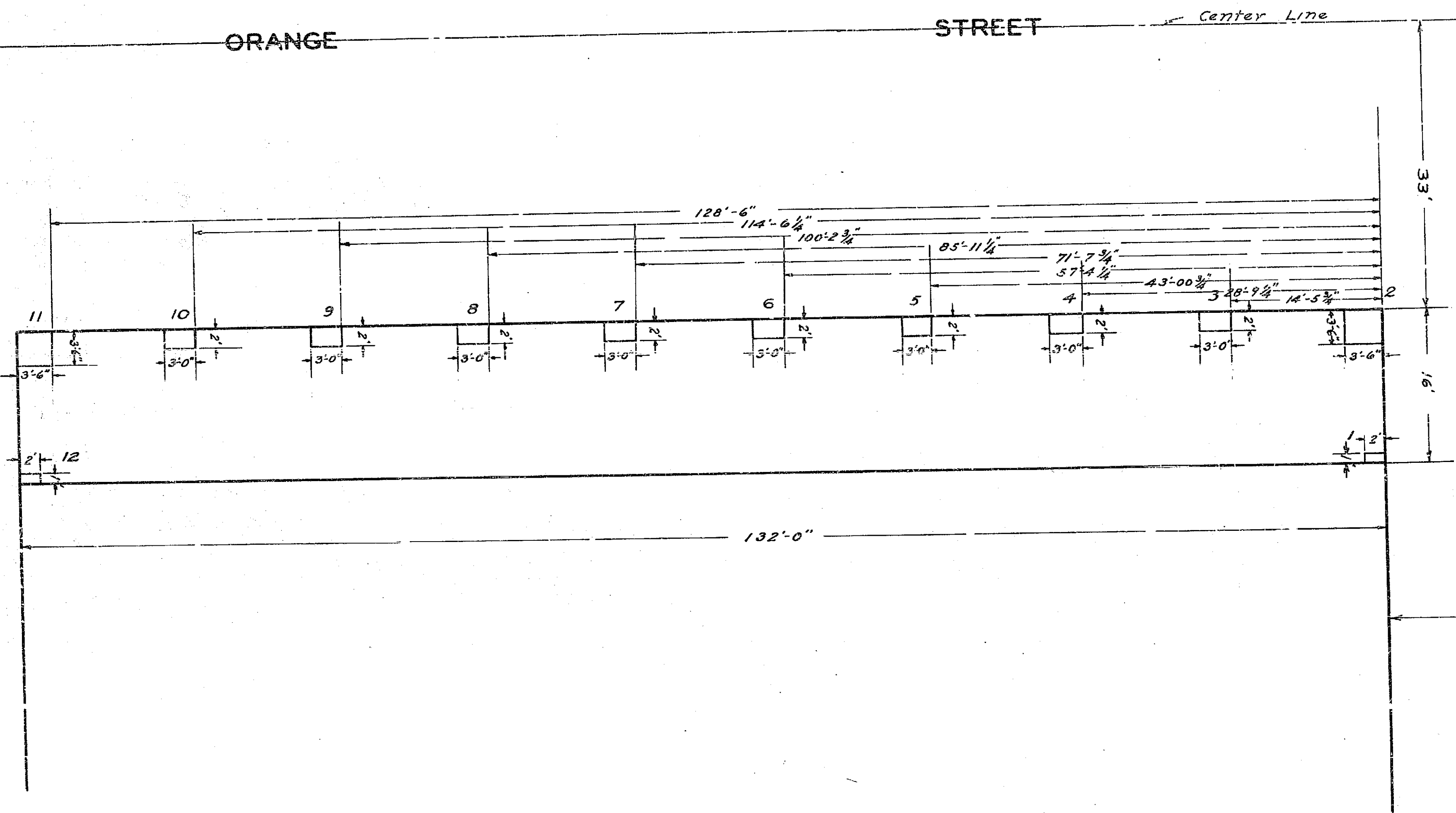
33'

16'

ORANGE

STREET

Center Line



96/10

128