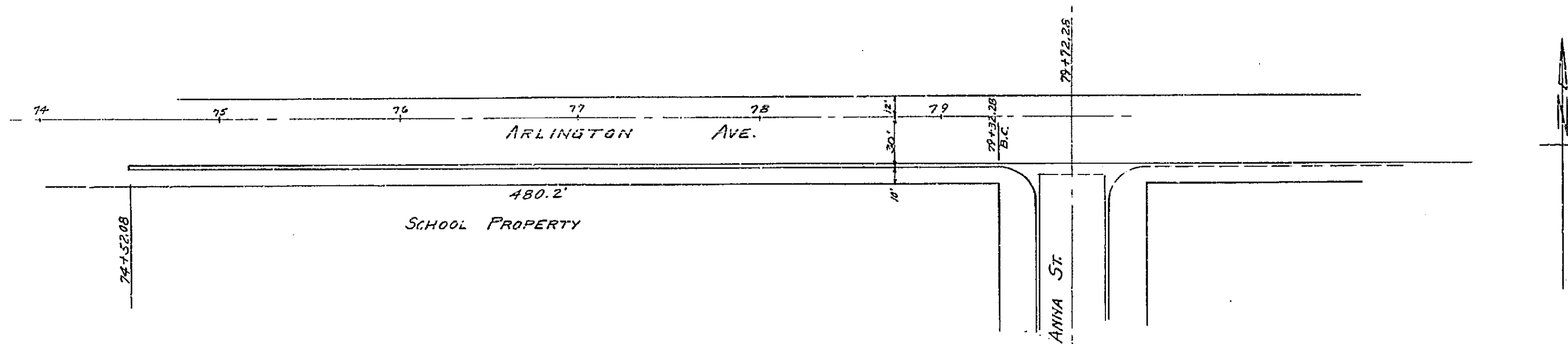
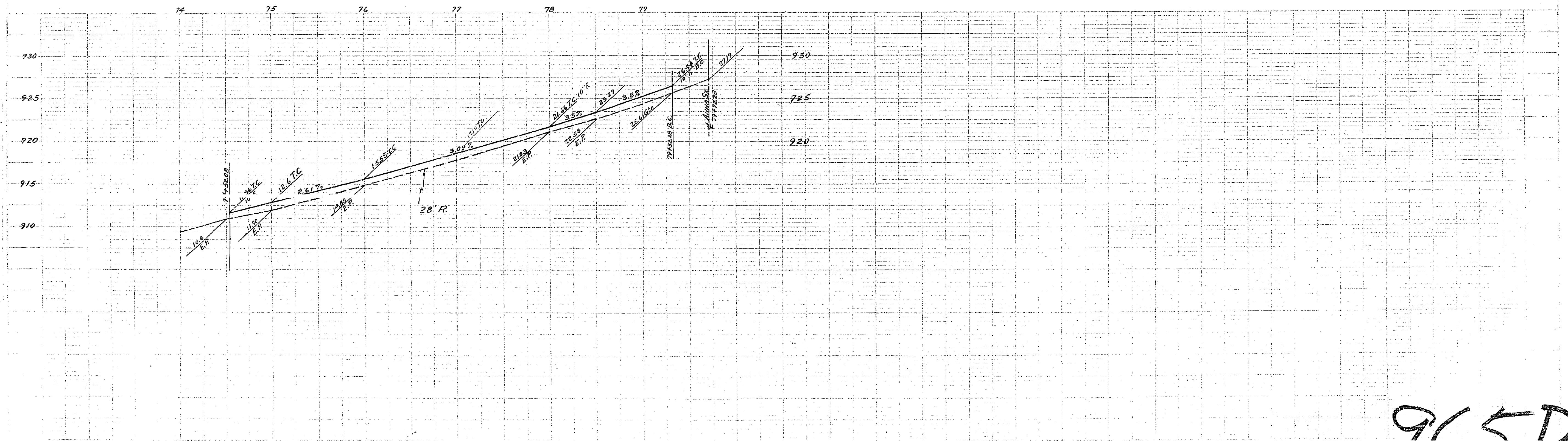


PLAN No. 965-D
 FOR THE CONSTRUCTION OF
 CURBS & GUTTERS
 ON
 ARLINGTON AVENUE

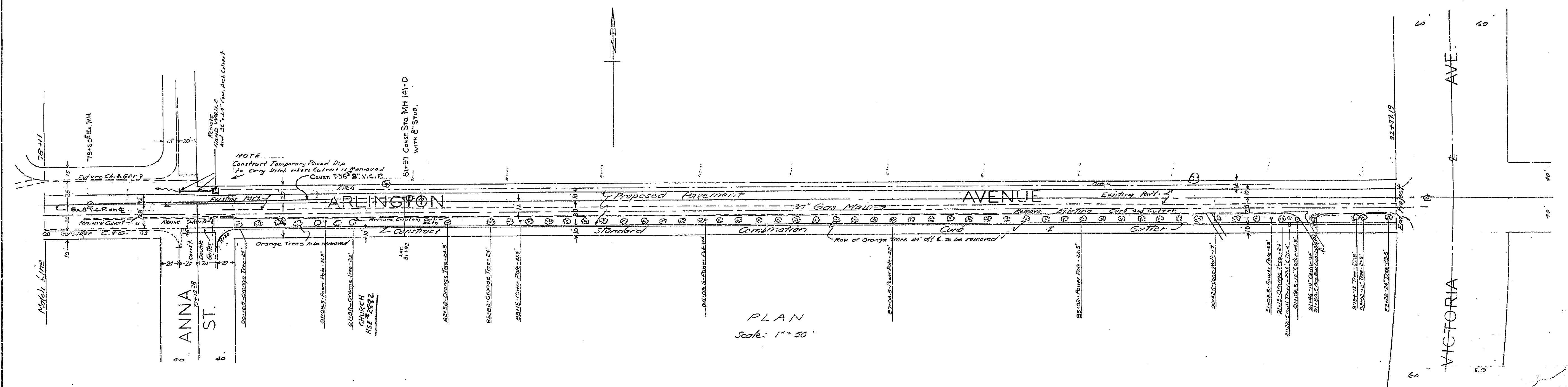
RIVERSIDE, CALIFORNIA
 OCTOBER 1954
 SCALES: HOR. 1/4" = 50 FT.
 VERT. 1/4" = 5 FT.
 P.B. 551-21
 APPROVED: *M.H. Irvine*
 M.H. IRVINE, REG. C.E. 3011
 CITY ENGINEER



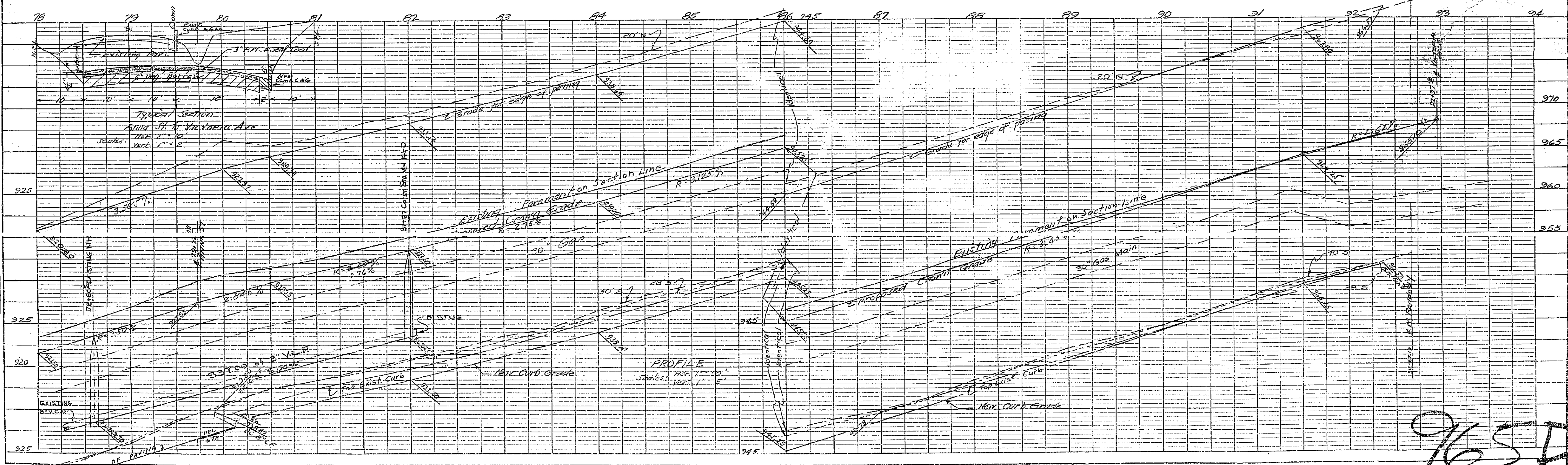
B.M. EL. 930.8 X ON HINGE,
 N. SIDE 48" STAND PIPE S.W.
 COR. ARLINGTON & ANNA - P.B. 551-21



965D



PLAN
Scale: 1" = 50'



PROFILE
Scale: Hor. 1" = 50'
Vert. 1" = 5'

965-C