

CITY OF RIVERSIDE  
ENGINEERING DEPT.  
PLAN AND PROFILE OF  
**MADISON STREET**  
FROM VICTORIA TO DUFFERIN

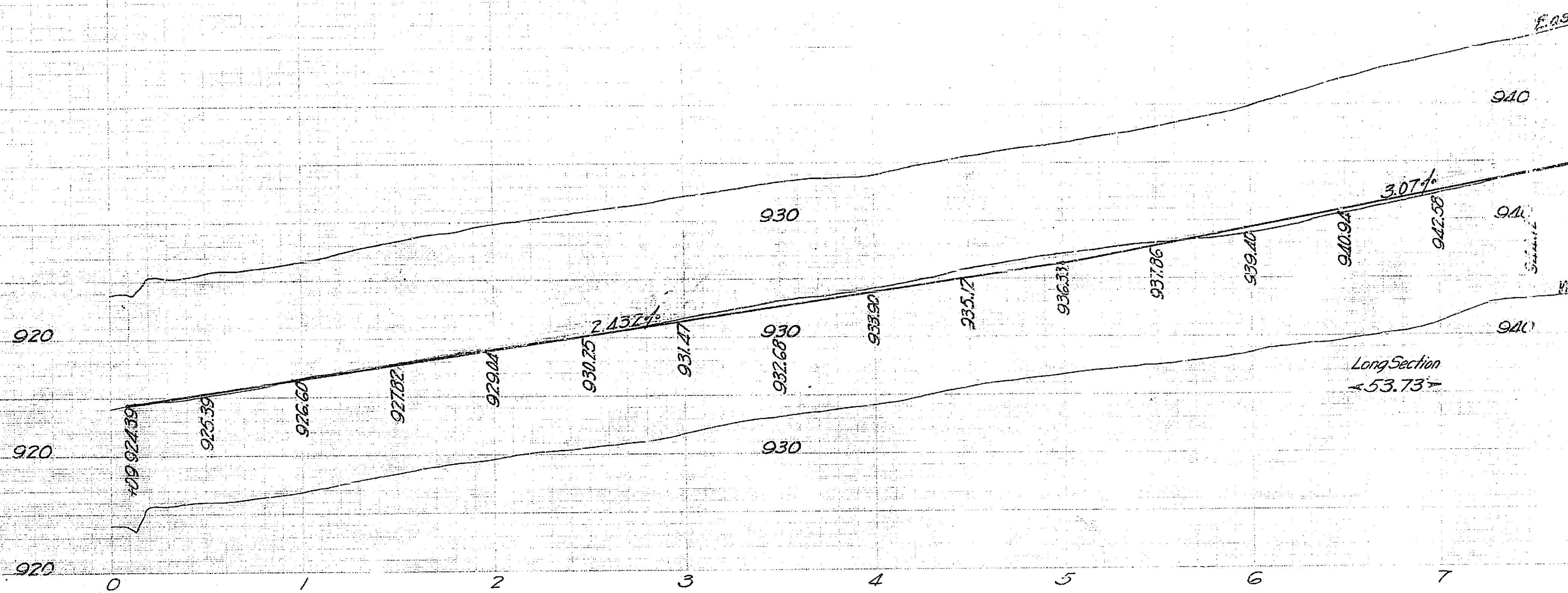
SHEET 1 OF 2  
P.S. 224 35-79  
P.S. 295 60-63

ALL ELEVATIONS SHOWN HEREON ARE U.S.G.S. DATUM

APPROVED *William* CITY ENGINEER

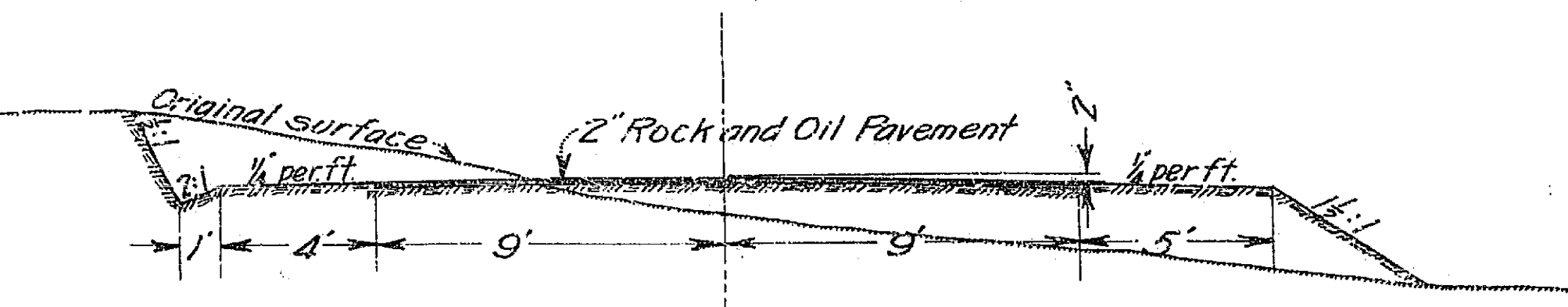
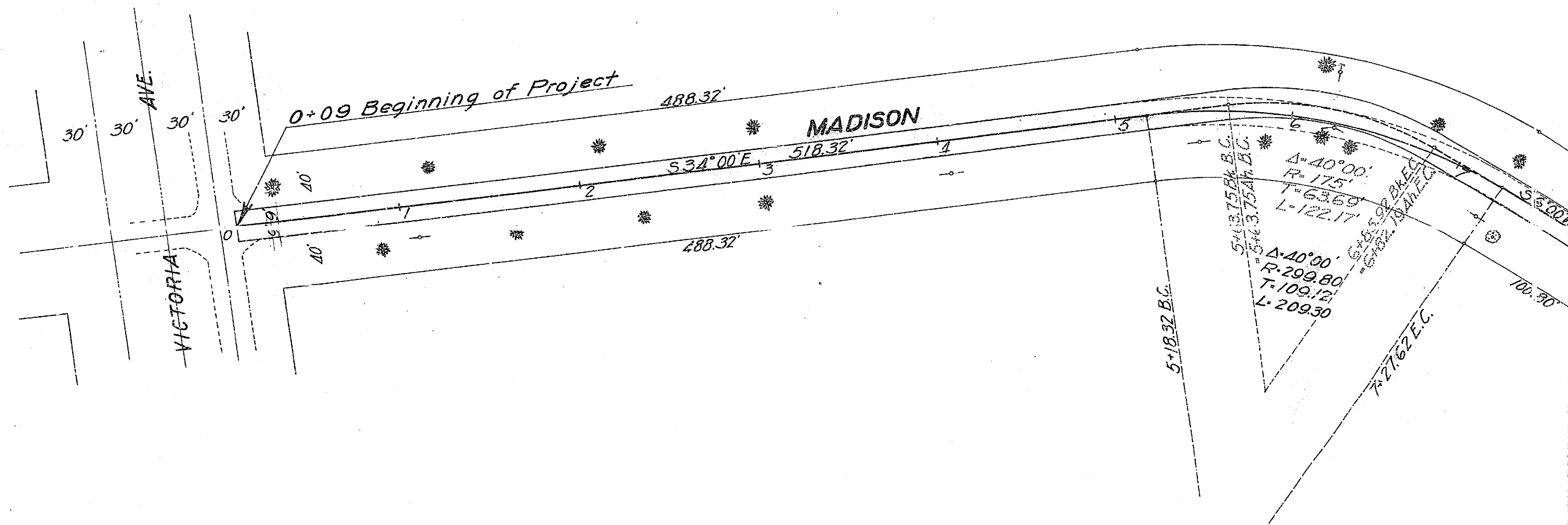
ADOPTED BY THE MAYOR AND COUNCIL  
OF THE CITY OF RIVERSIDE THIS 12<sup>TH</sup> DAY  
OF JANUARY 1985

*[Signature]* CITY CLERK.

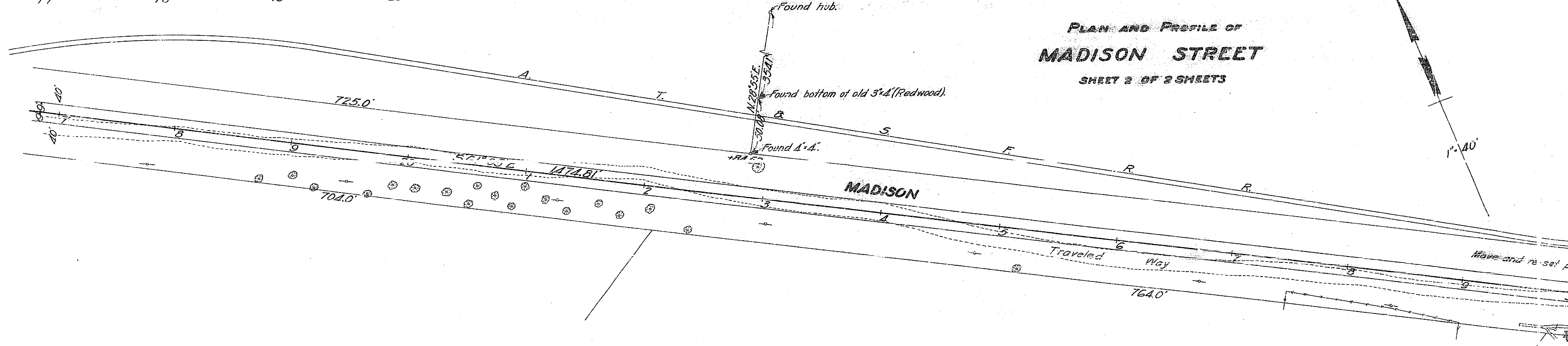
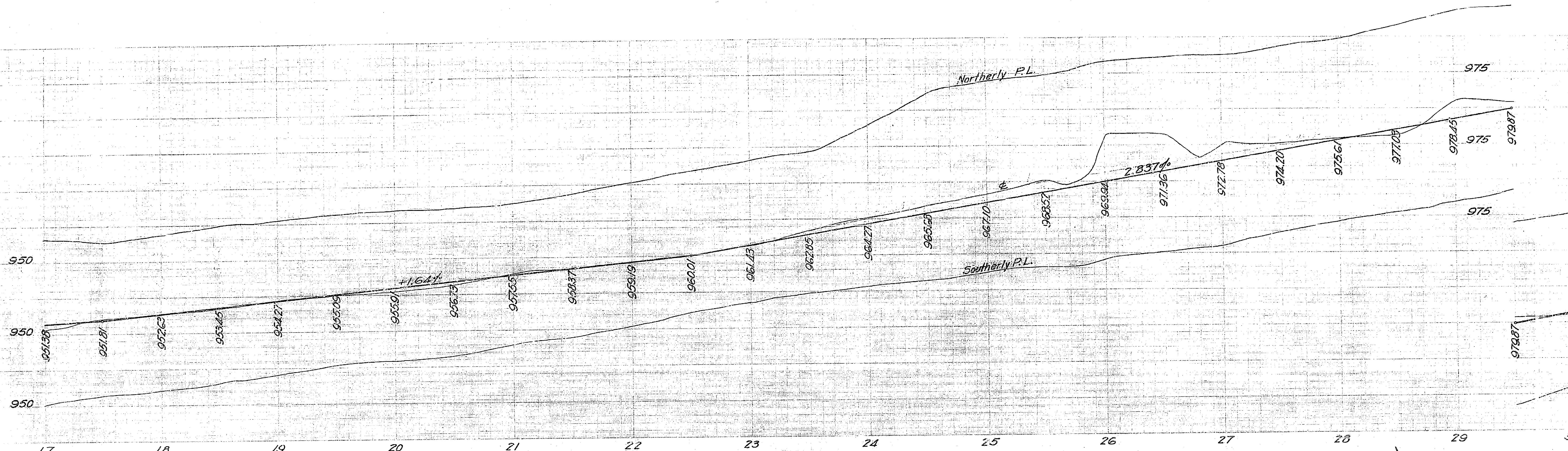


**TYPICAL SECTION**

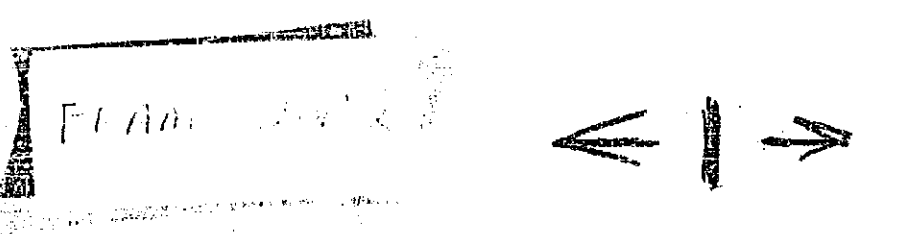
Scale 1"=4'

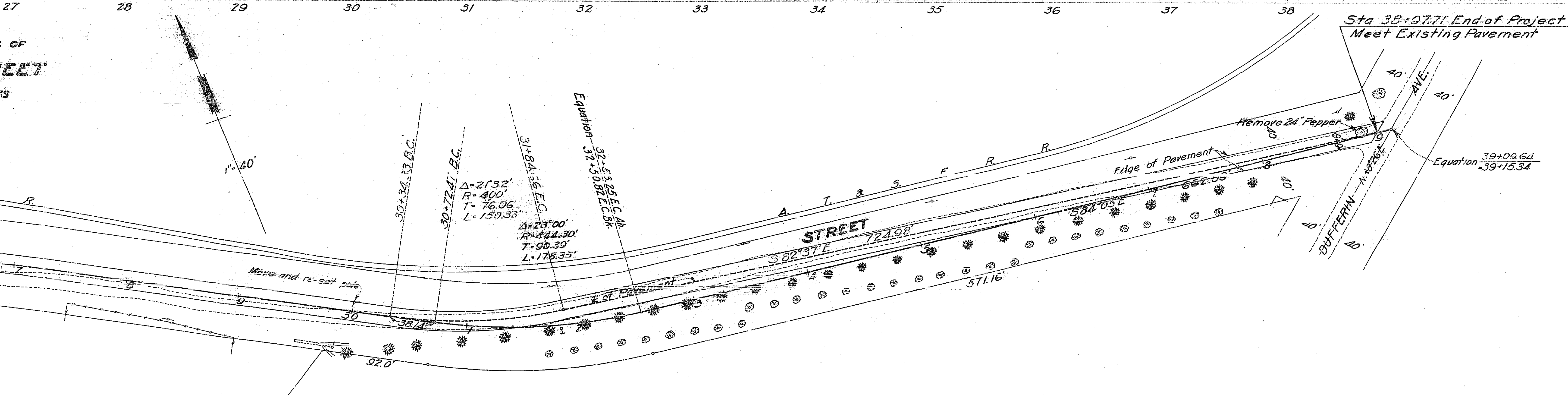
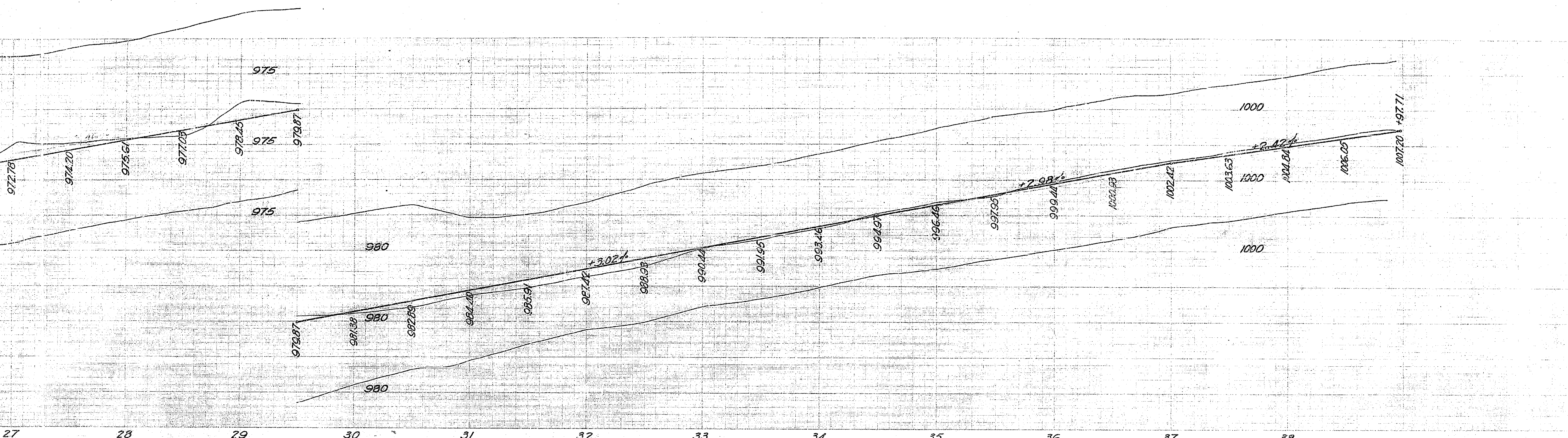


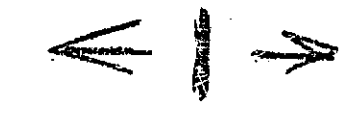
Plan  $\leftarrow \rightarrow$



PLAN AND PROFILE OF  
**MADISON STREET**  
 SHEET 2 OF 2 SHEETS






 FRAMC 112

967