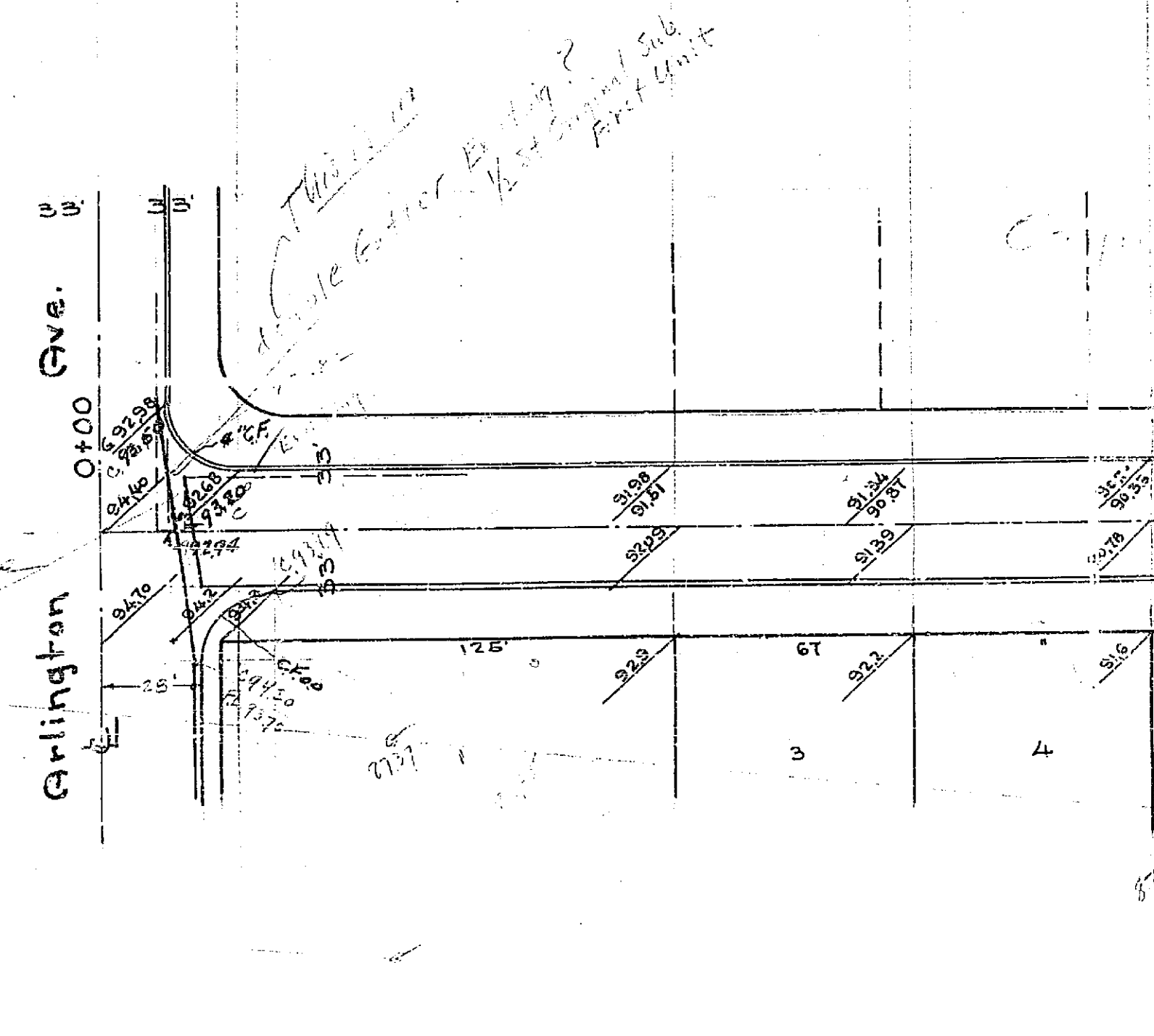
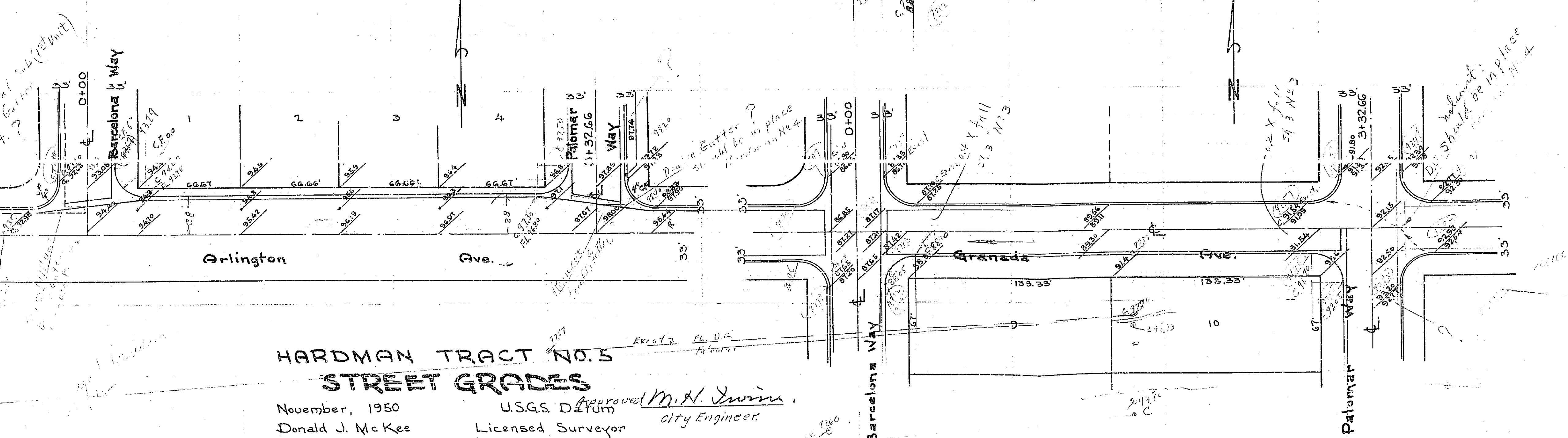
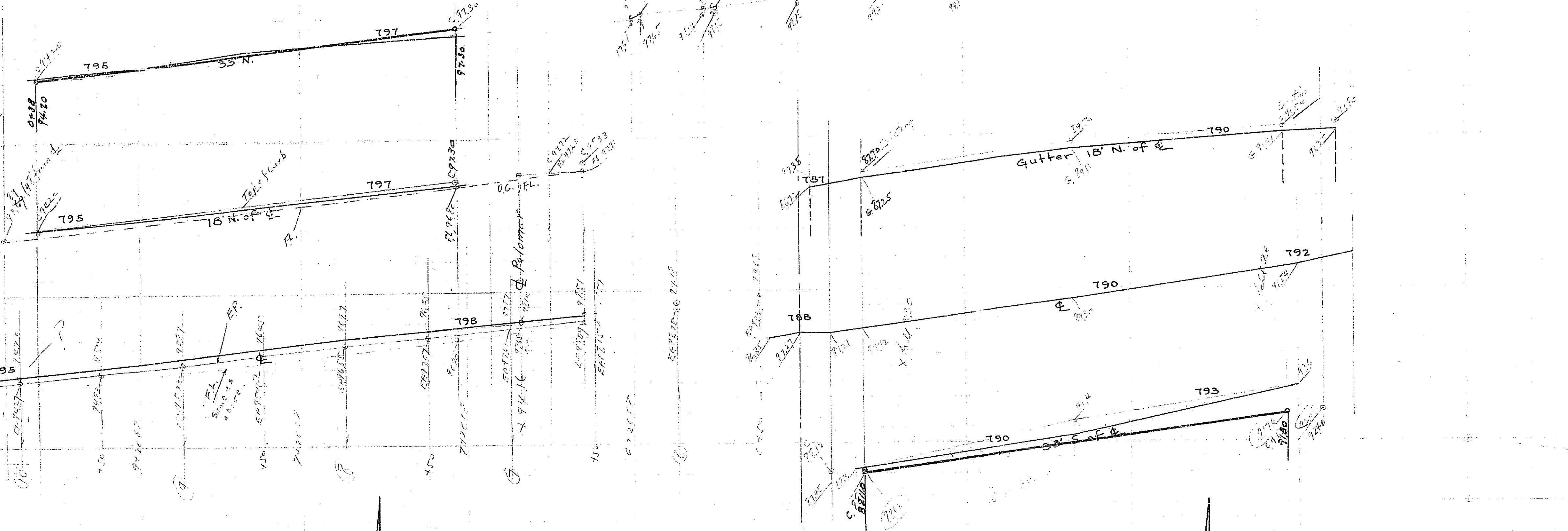


PROPERTY OF
CITY OF RIVERSIDE
CITY ENGINEERING DEPT.

1173/40-42



HARDMAN TRACT NO. 5 STREET GRADES

November, 1950
Donald J. McKee
USGS Datum
Licensed Surveyor
Approved M. H. Swinn
City Engineer.

B.M. City Field Book 431-48
Spike & Lead W. Curb Capistrano Way
N. line Arlington Ave. Elev. 790.51

PROPERTY OF
CITY OF RIVERSIDE
CITY ENGINEERING DEPT.

2
3
FRAME 20'2