

Drawing No.	Sheet No.	Total Sheets	Page No.
971-A	1	4	326
Drawn	Checked	Approved	
G.A. Boley	W. H. ...	J. ...	

CITY OF RIVERSIDE
ENGINEERING DEPARTMENT

PLANS AND PROFILES
OF THE PROPOSED
PEDESTRIAN TUNNELS
THROUGH S.P.R.R. FILL

ON BOTH SIDES OF
MAIN STREET

ALSO SHOWING PROPOSED PAVING OF THE
'S' TURN
CONNECTING MAIN ST. TO MARKET ST.
AT FIRST ST.

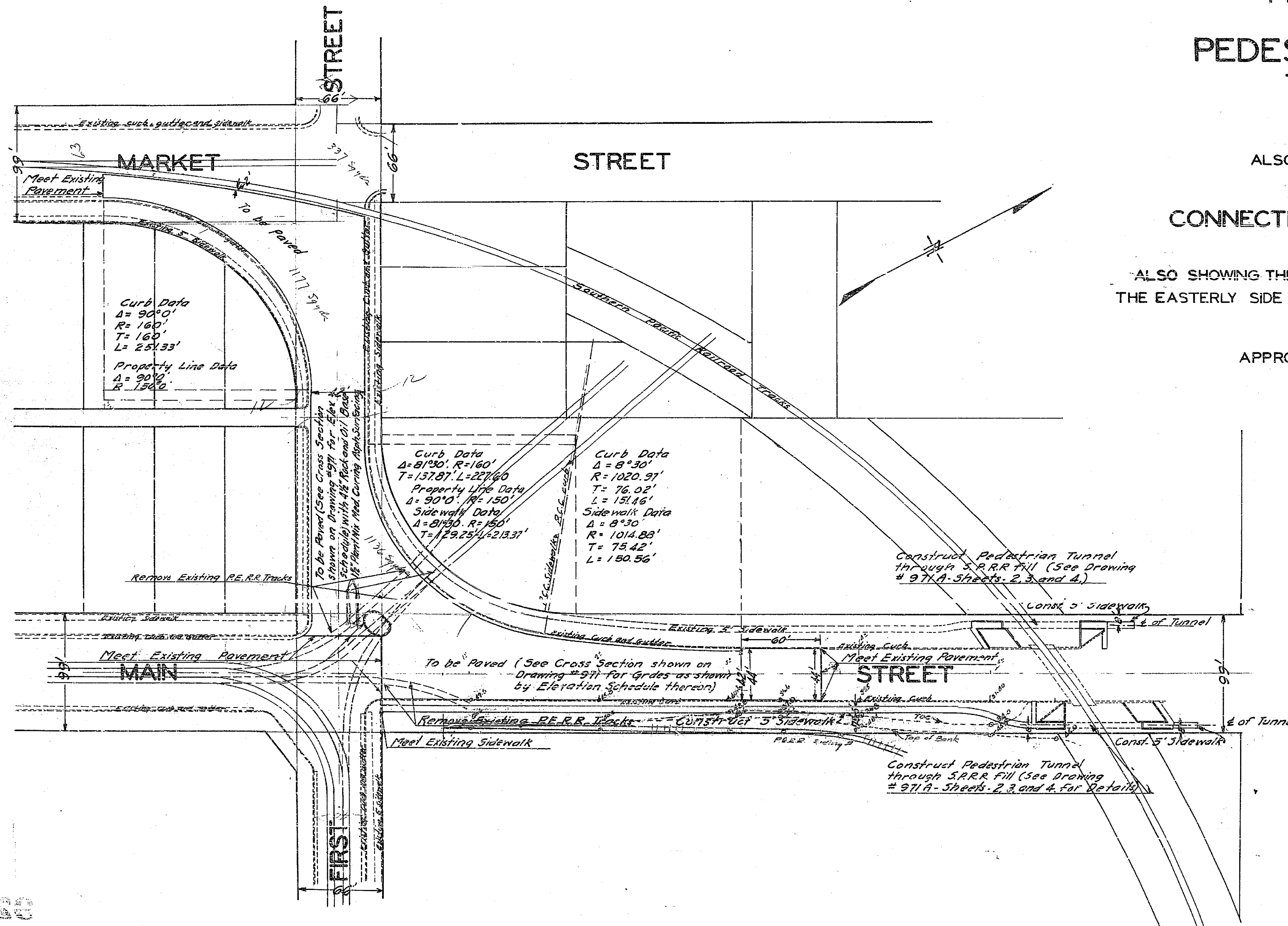
ALSO SHOWING THE PROPOSED CONSTRUCTION OF SIDEWALKS ON
THE EASTERLY SIDE OF MAIN STREET AND AT PEDESTRIAN TUNNELS

SCALE 1" = 40'

APPROVED *[Signature]* CITY ENGINEER

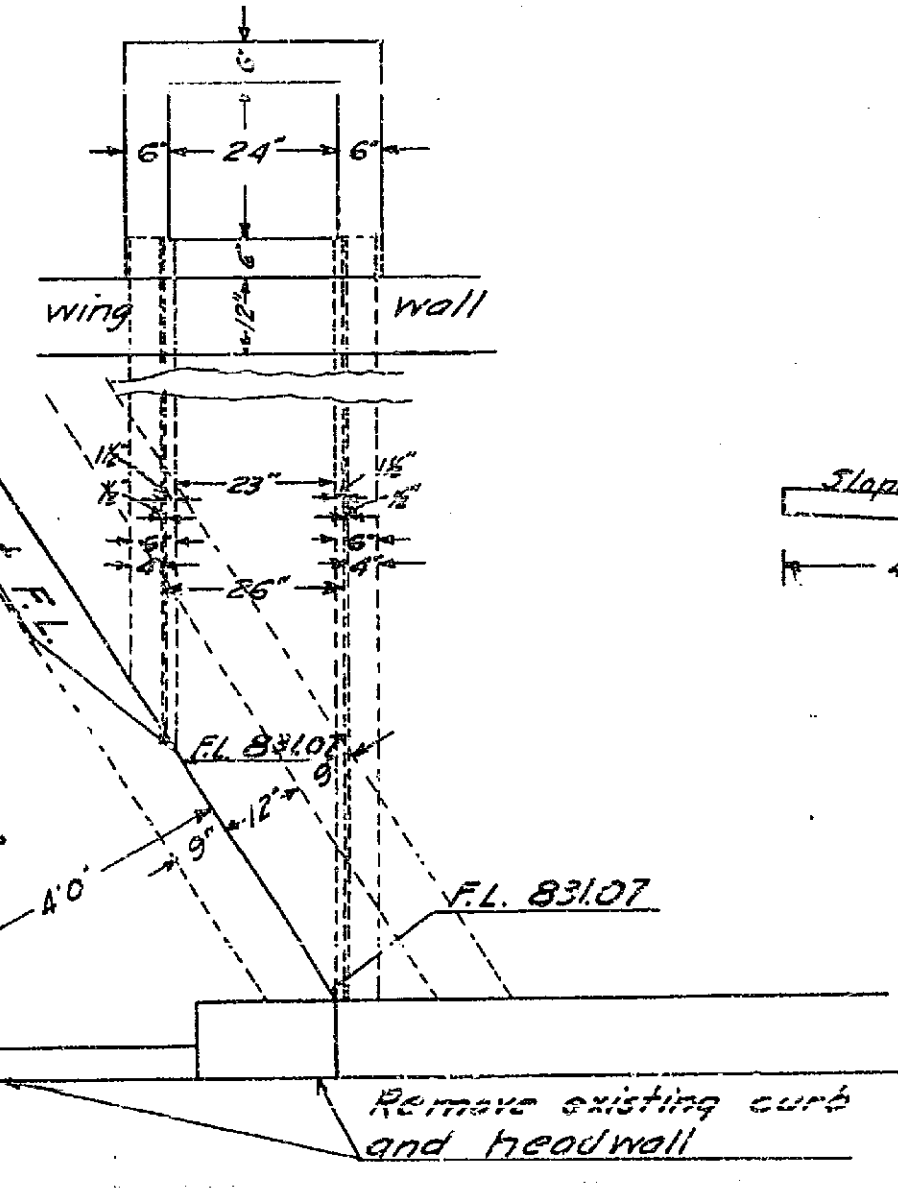
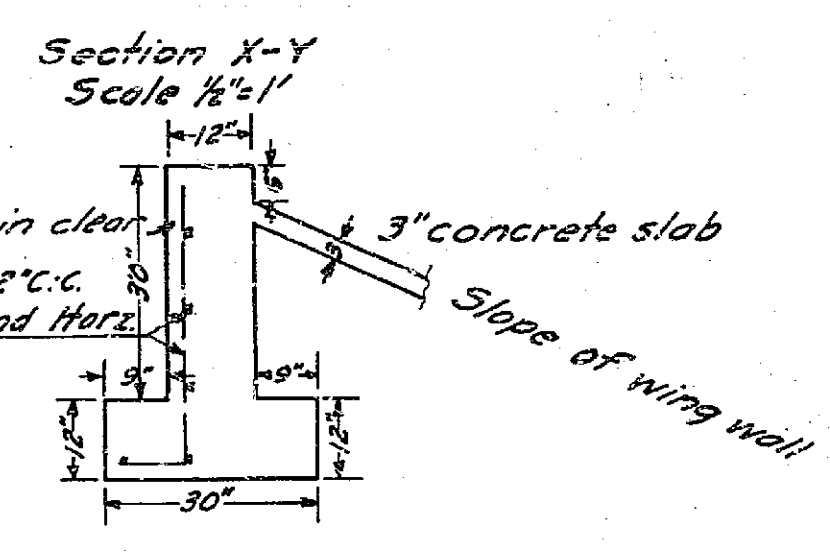
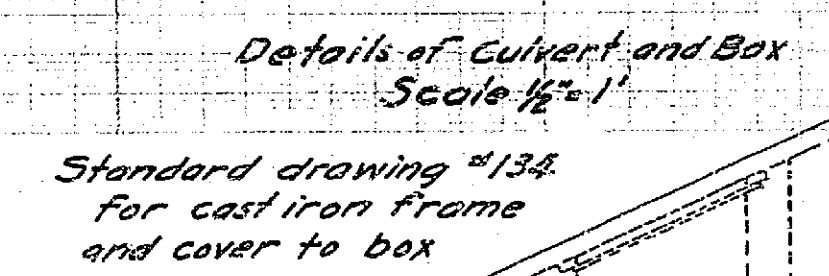
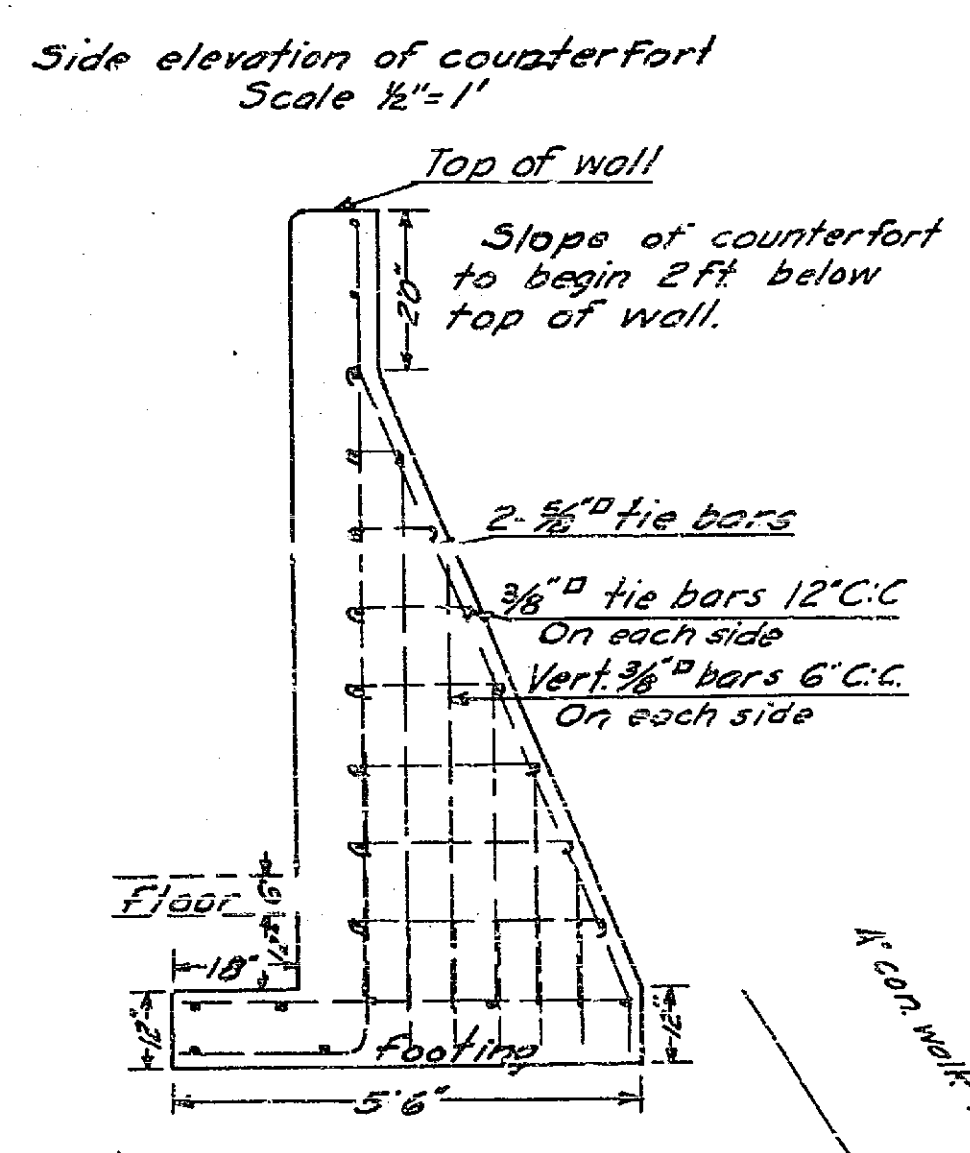
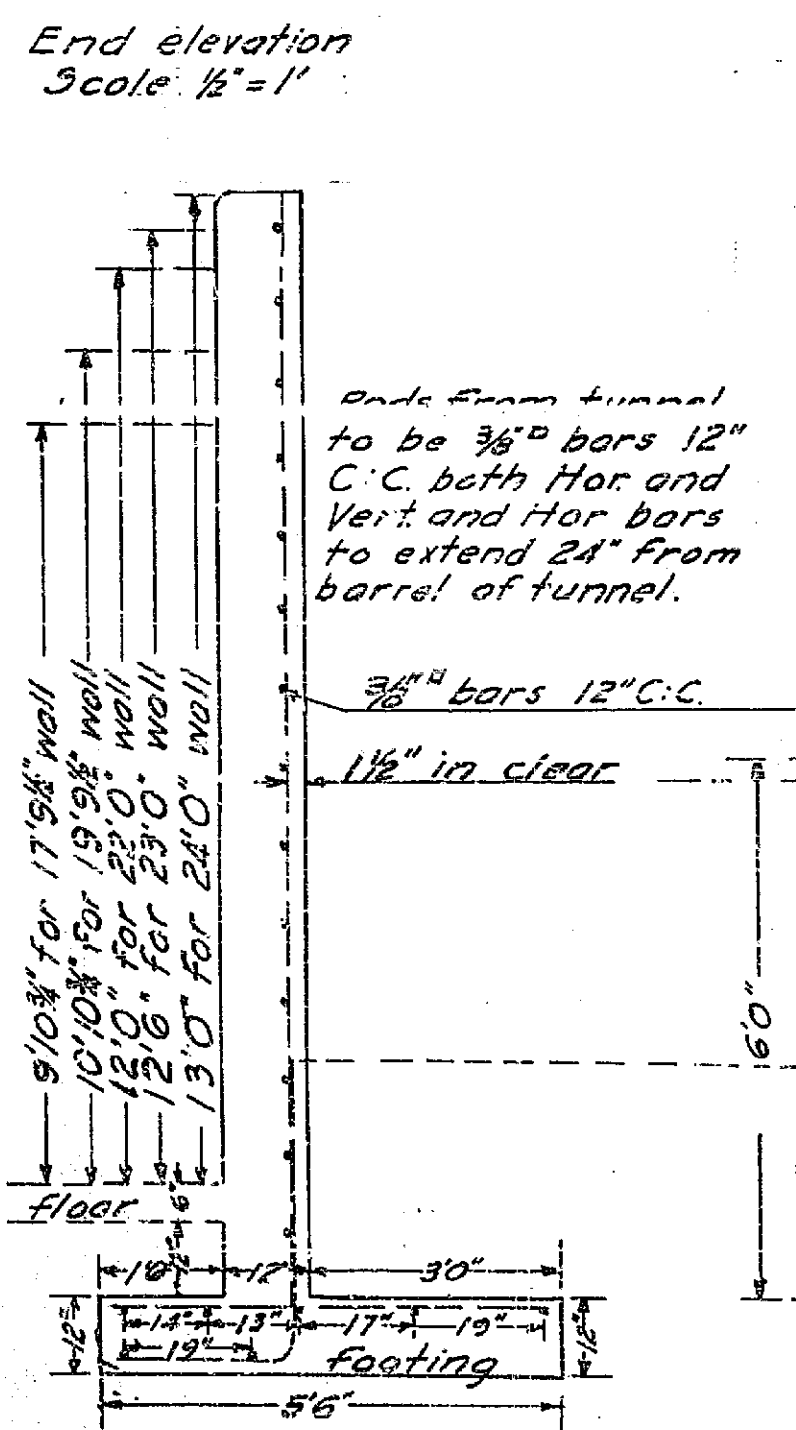
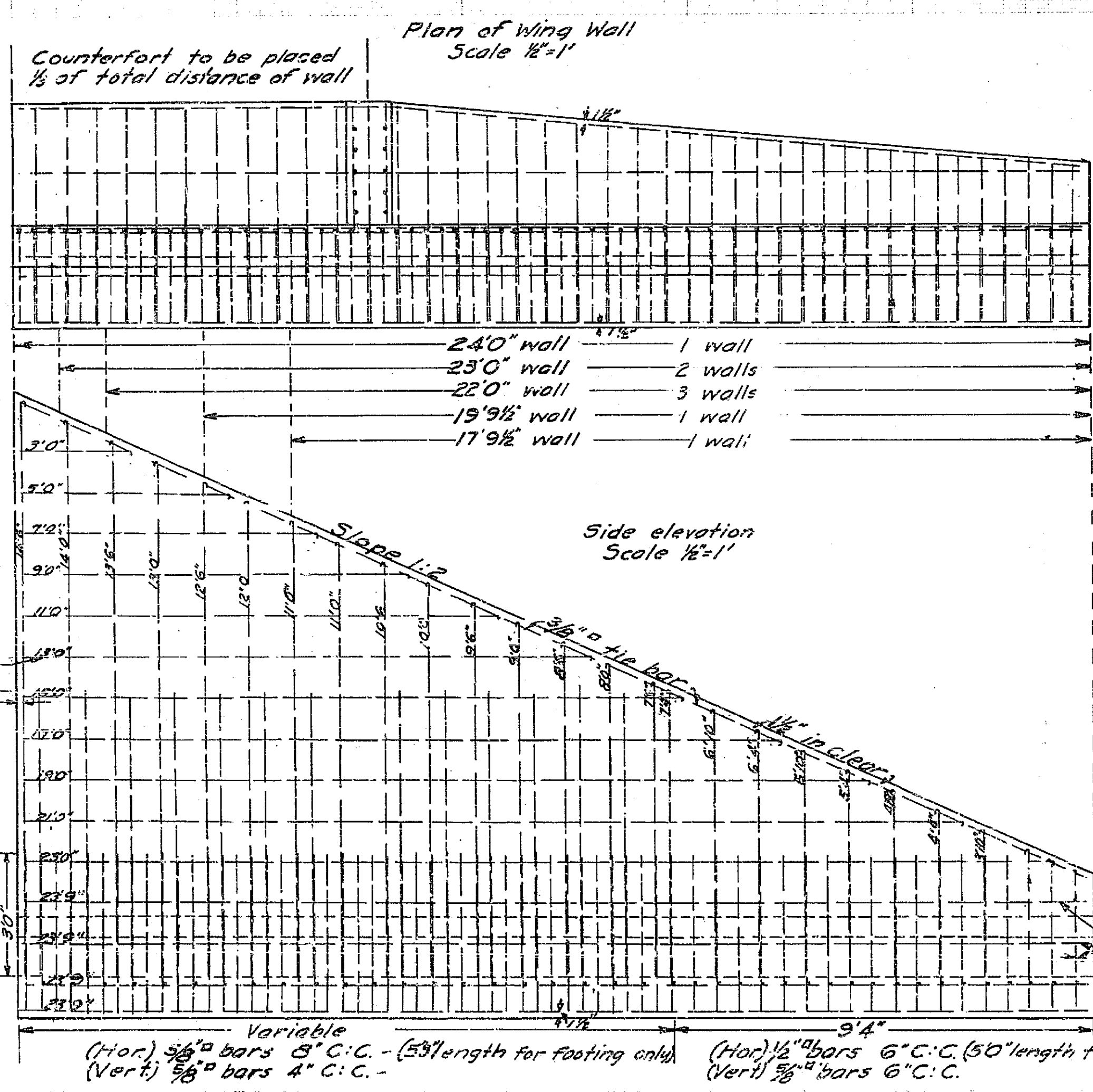
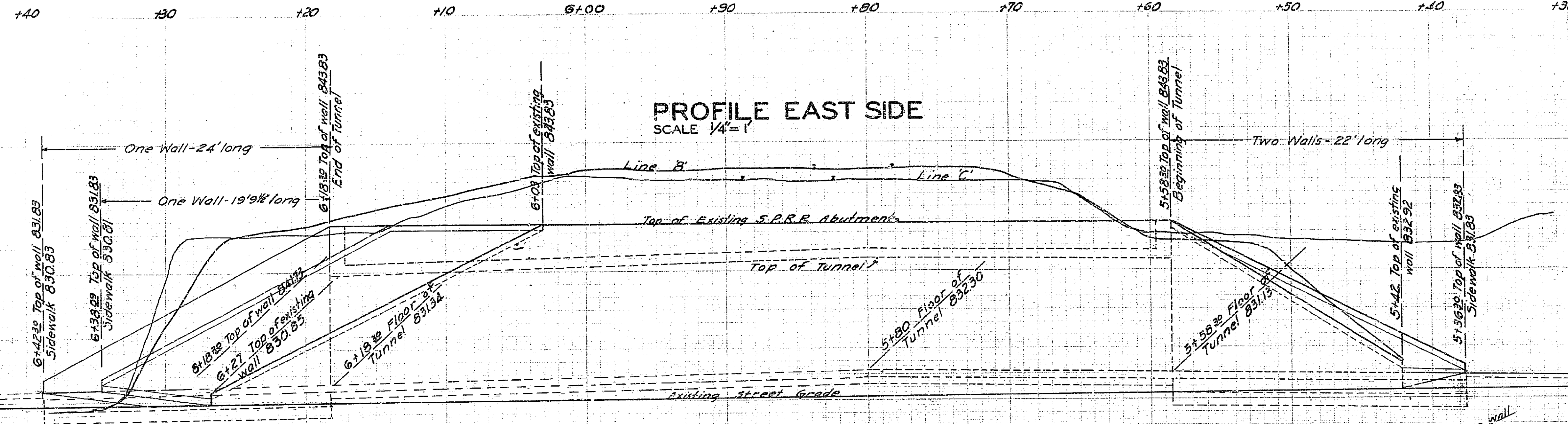
APPROVED AND ADOPTED BY THE MAYOR AND
COUNCIL OF THE CITY OF RIVERSIDE THIS 3RD
DAY OF MARCH 1936.

[Signature]
CITY CLERK



971A

Drawing No.	Sheet No.	Total Sheets	Scale
971A	3	4	3/8" = 1'
Drawn	Checked	Approved	
G.H. [Signature]	[Signature]	[Signature]	



Note: Counterfort to be placed on walls 22ft or over in length.

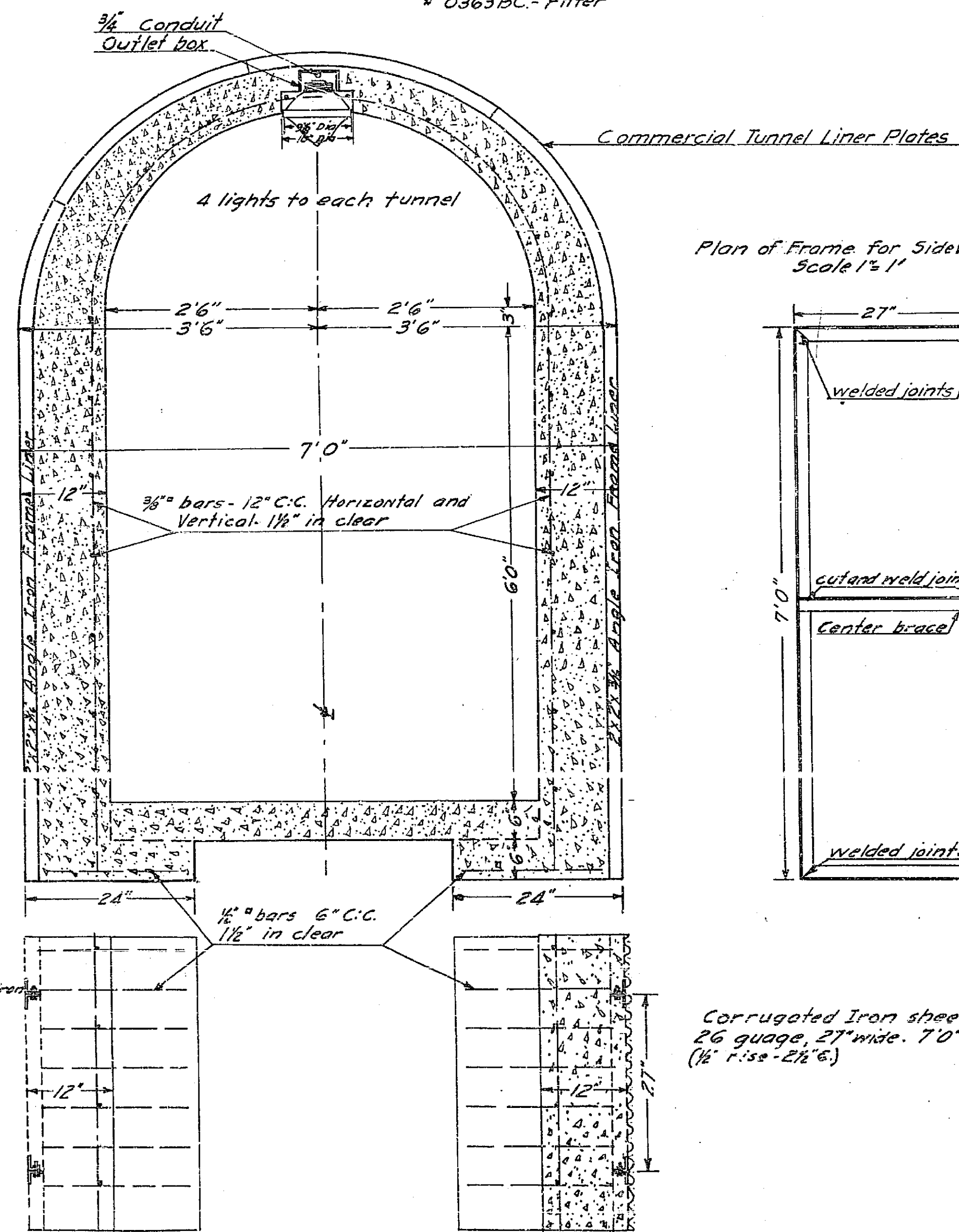
Variable (Hor) 5/8" bars 9" C.C. - (53" length for footing only) (Vert) 3/8" bars 4" C.C. (Hor) 1/2" bars 6" C.C. (50" length for footing only) (Vert) 3/8" bars 6" C.C.

971A

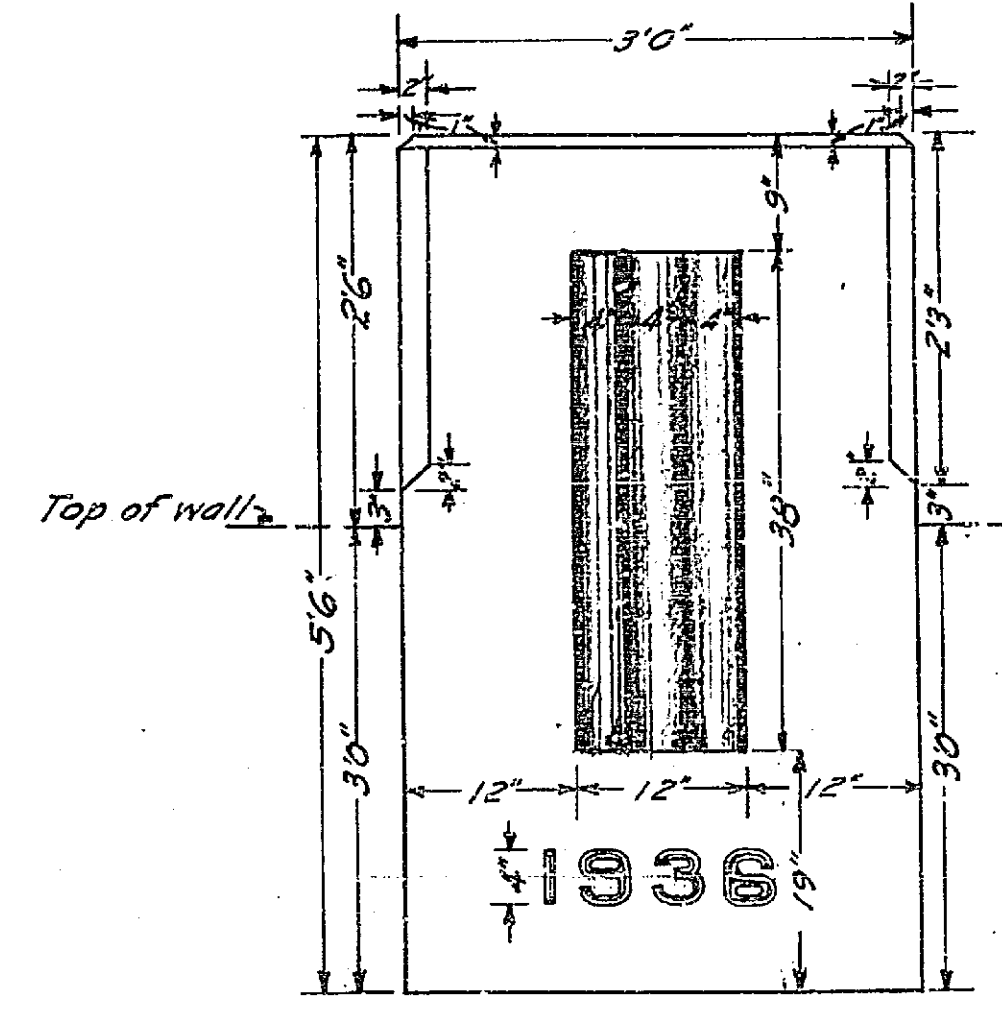
Drawing No.	Sheet No.	Total Sheets	Scale
971A	4	4	3/8"
Drawn	Checked	Approved	
<i>[Signature]</i>	<i>[Signature]</i>	<i>[Signature]</i>	

Cross Section of Pedestrian Tunnels on both sides of Main Street through Southern Pacific Railroad Fill Showing concrete lining and lighting layout Scale 1"=1'

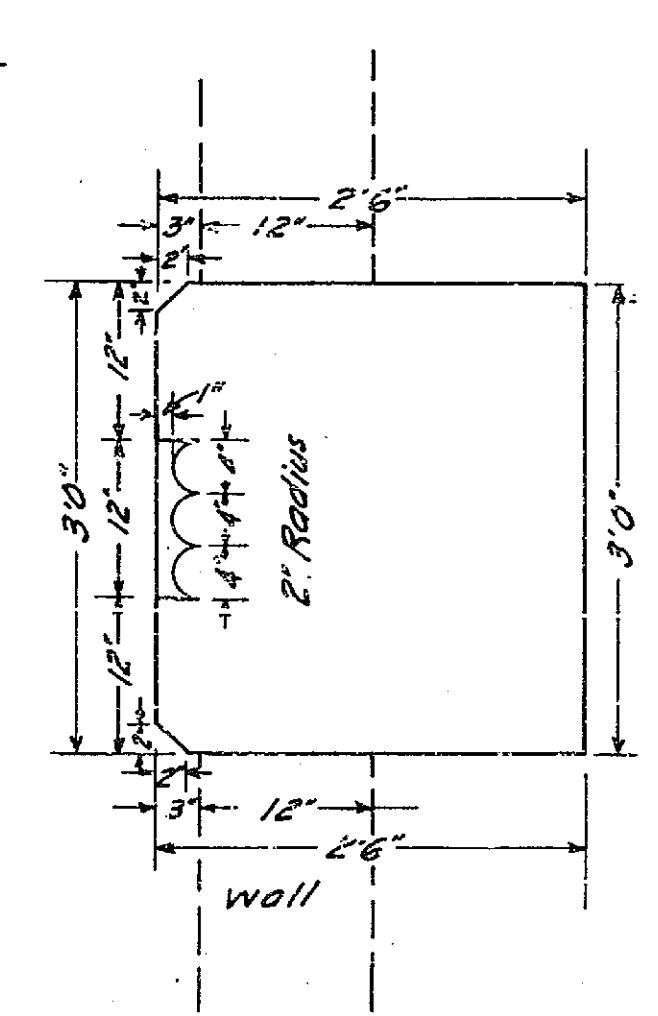
Material for lights
 HOLOPHANE REFLECTOR REFRACTOR (SCREW NECK)
 # 02472-BC-100-150 Watt (Asymmetrical Type for Horizontal Uniformity)
 # 2472-Glass
 # 0363 BC-Fitter



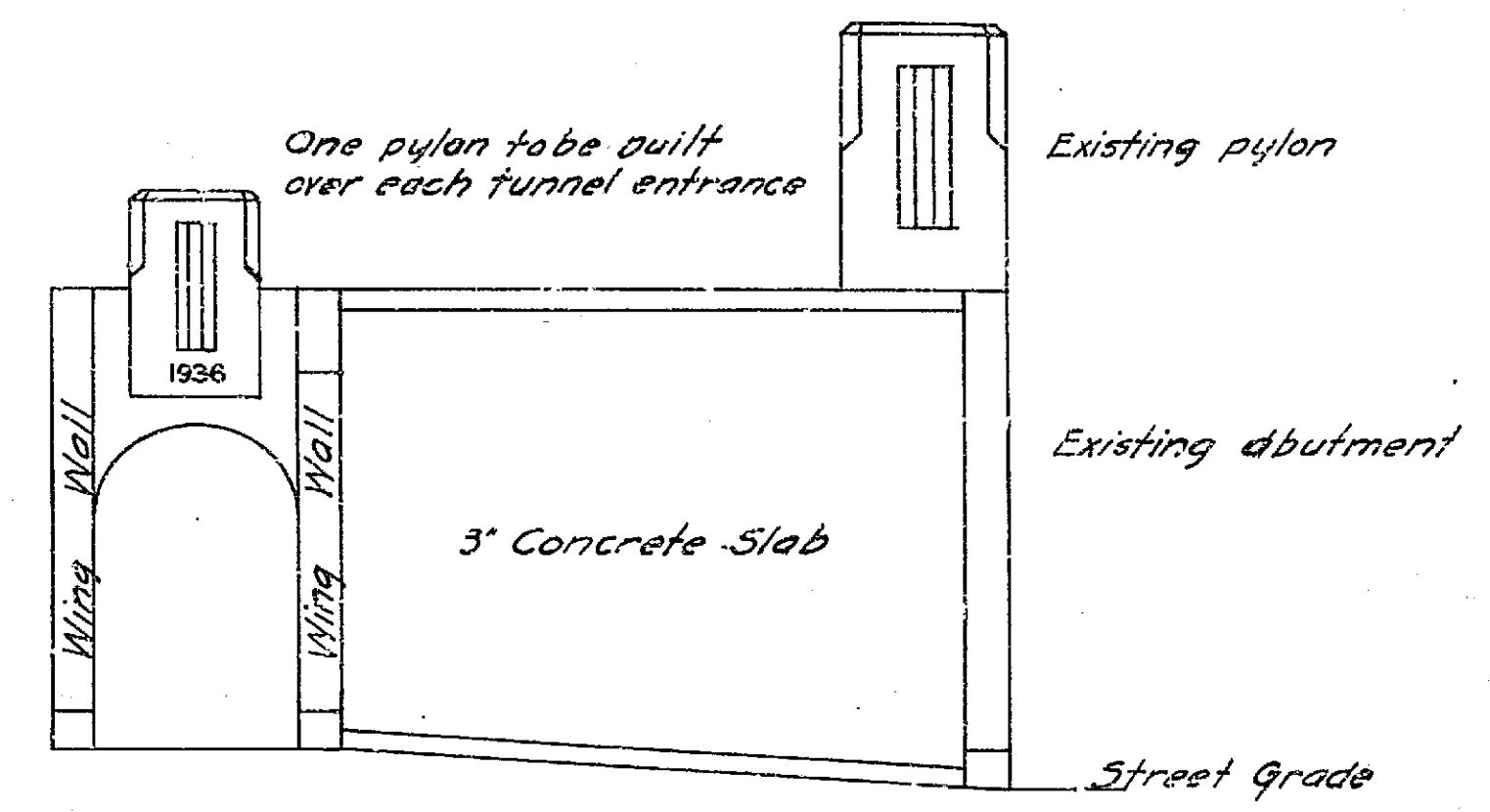
Detail of Pylon Scale 1"=1'



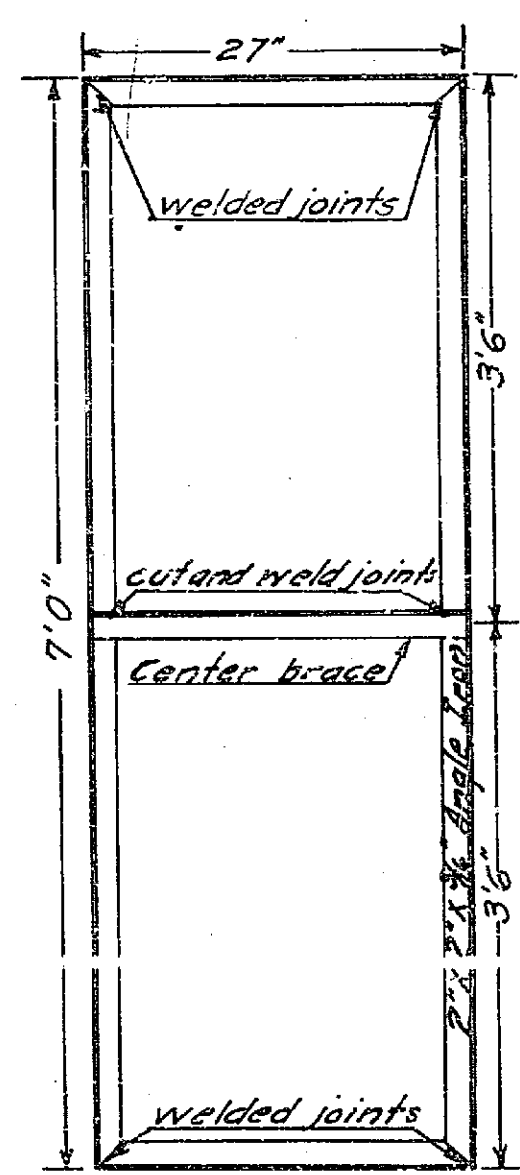
Cross Section of Pylon Scale 1"=1'



Elevation of Tunnel Entrance South Portal of West Tunnel North Portal of East Tunnel



Plan of Frame for Sidewall Lining Scale 1"=1'



Note: Corrugated iron sheets 26 gauge, 27" wide and 7'0" long to be spot welded to 2"x2"x3/4" angle iron frame at 5" intervals on all sides and also to center brace.

Corrugated Iron sheets 26 gauge, 27" wide, 7'0" long (1/8" rise - 2 1/2" G.)

Note: - 3/8" Commercial Tunnel Liner Plates form each tier of half circle arch.

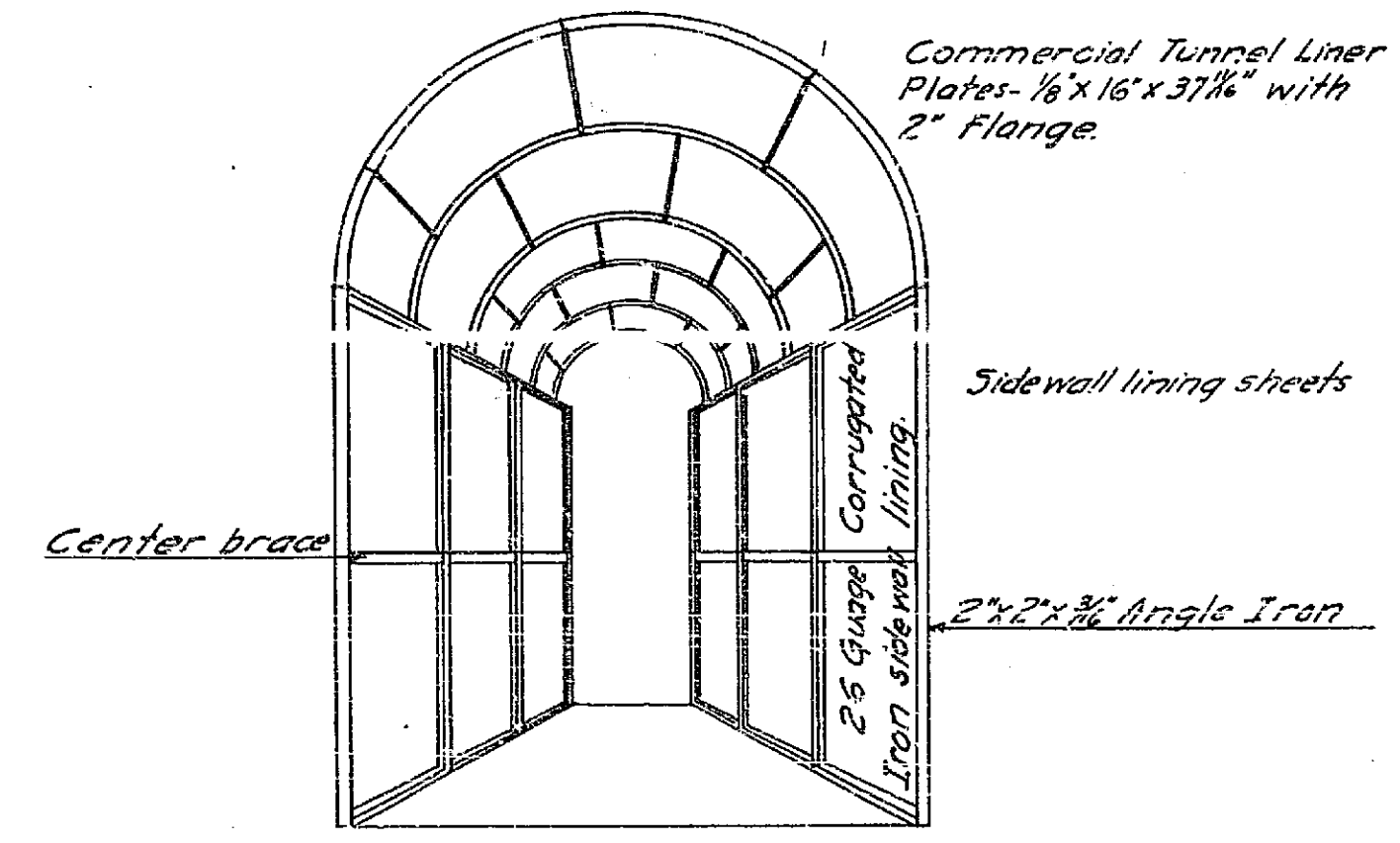


Diagram: - Showing method of arrangement of sidewall lining and Commercial Tunnel Liner Plates.

Note: - Temporary timbering to be placed 6'9" C.C. throughout entire length of tunnel.

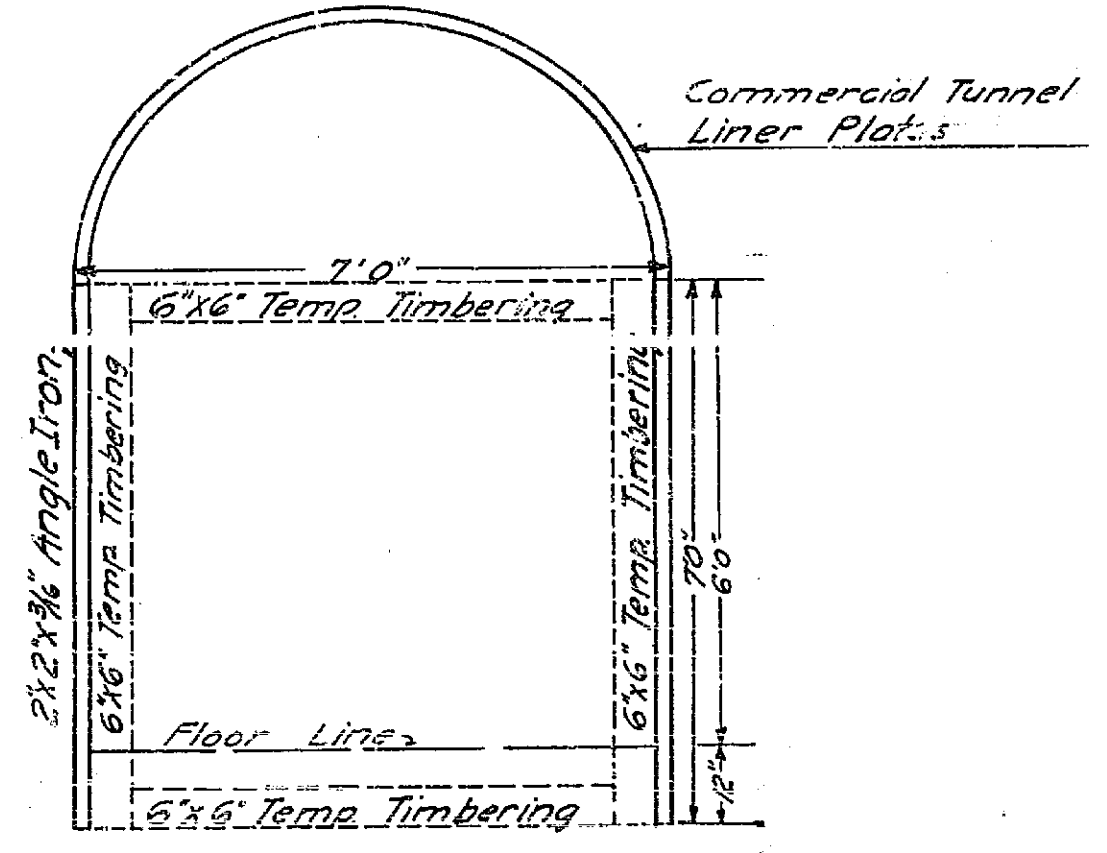


Diagram: - Showing method of arrangement of temporary timbering in tunnel.

971A