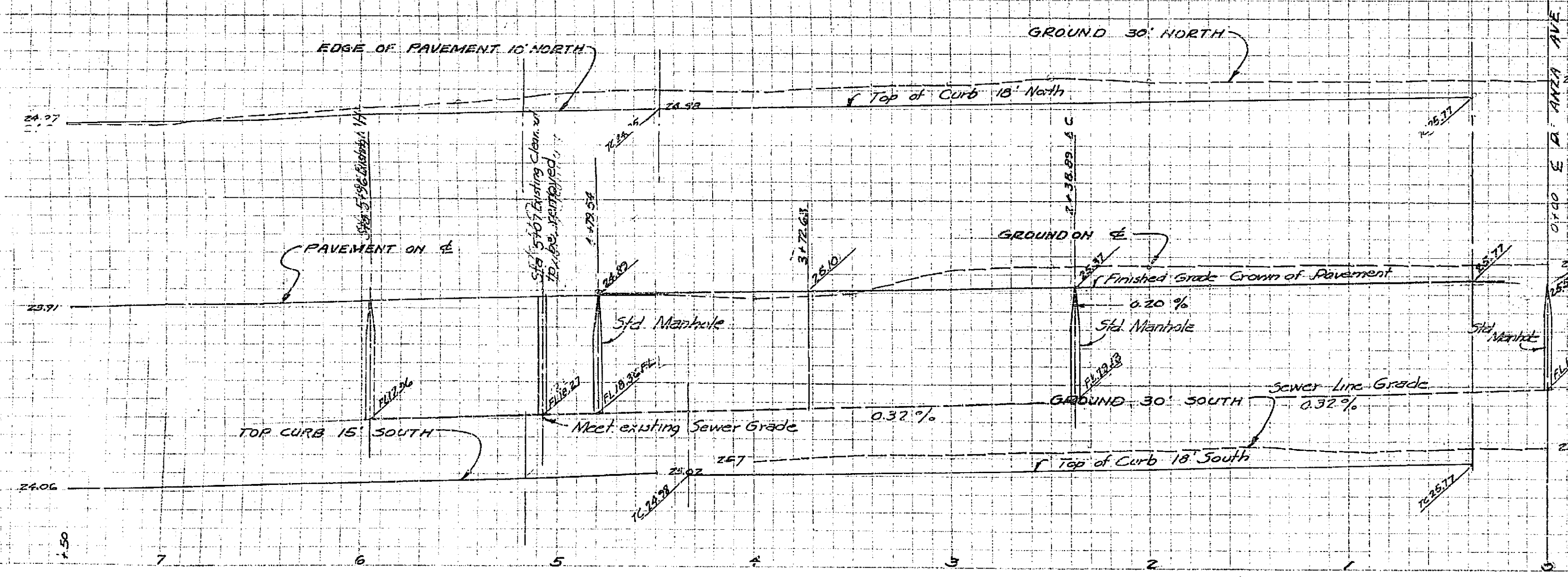


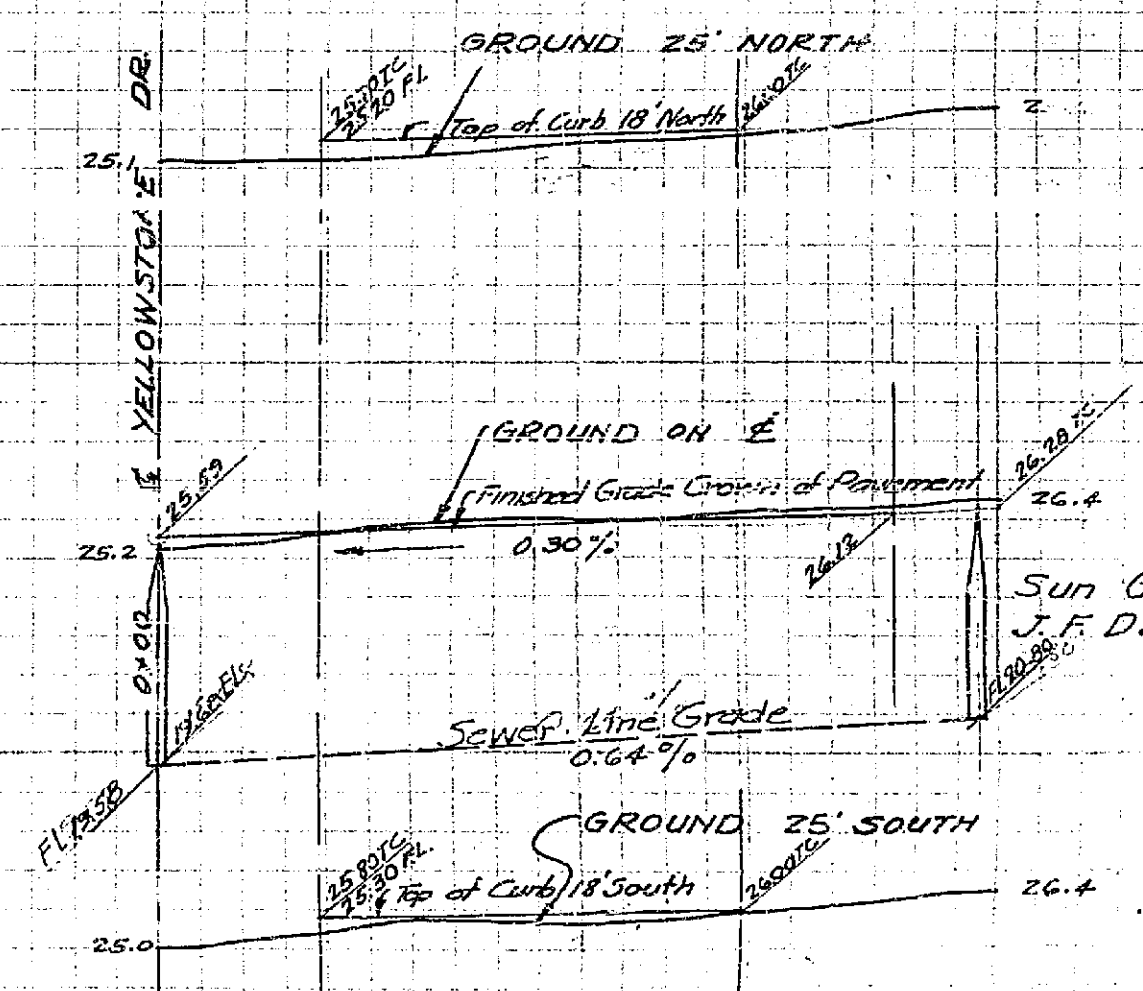
SCHOOL STREET

TAHOE COURT

B.M. - 1/2" Pipe 600' South of Centerline
1650' West of E. Line of Brick Water Box
E1 826.30



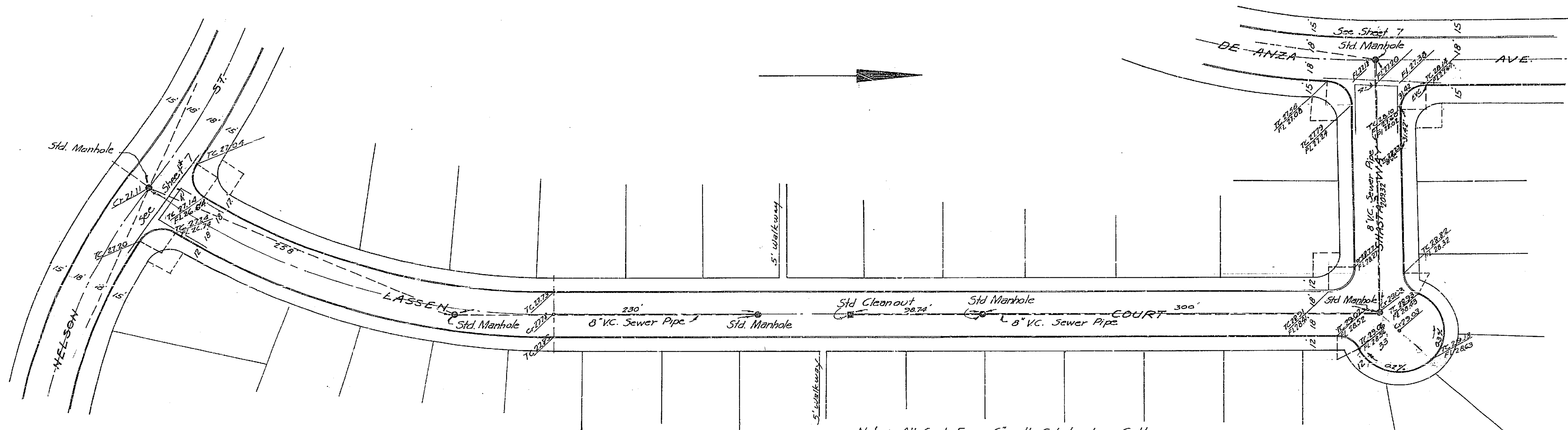
Plan and Profile
Sun Gold Terrace - SCHOOL STREET
J. F. Davidson, C.E.
Dec. 1950
Scale: Horiz. 1" = 40'
Vert. 1" = 4'



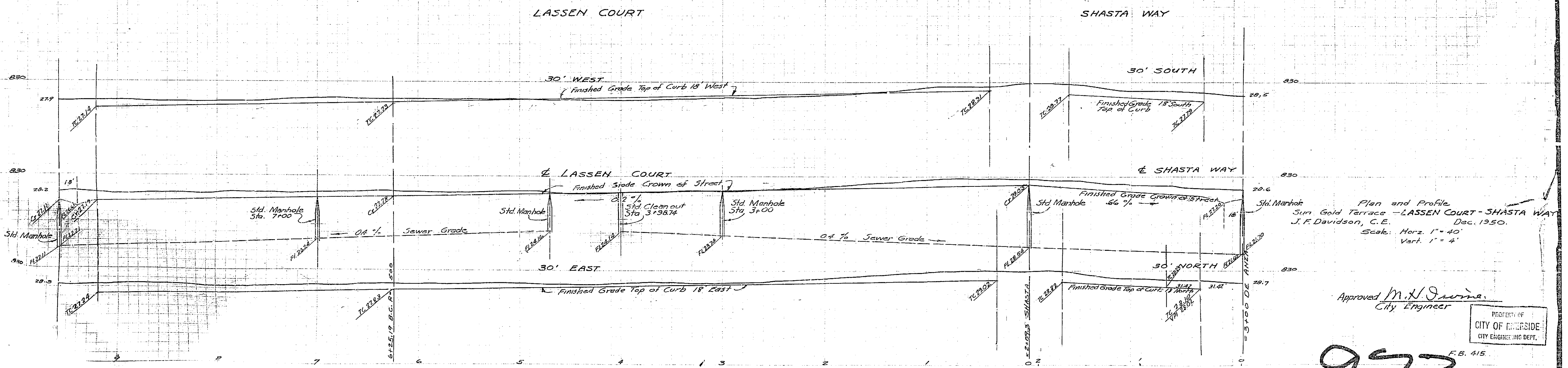
Plan and Profile
Sun Gold Terrace - TAHOE COURT
J. F. Davidson, C.E.
Dec. 1950
Scale: Horiz. 1" = 40'
Vert. 1" = 4'

Approved M. H. Irvine
City Engineer

973

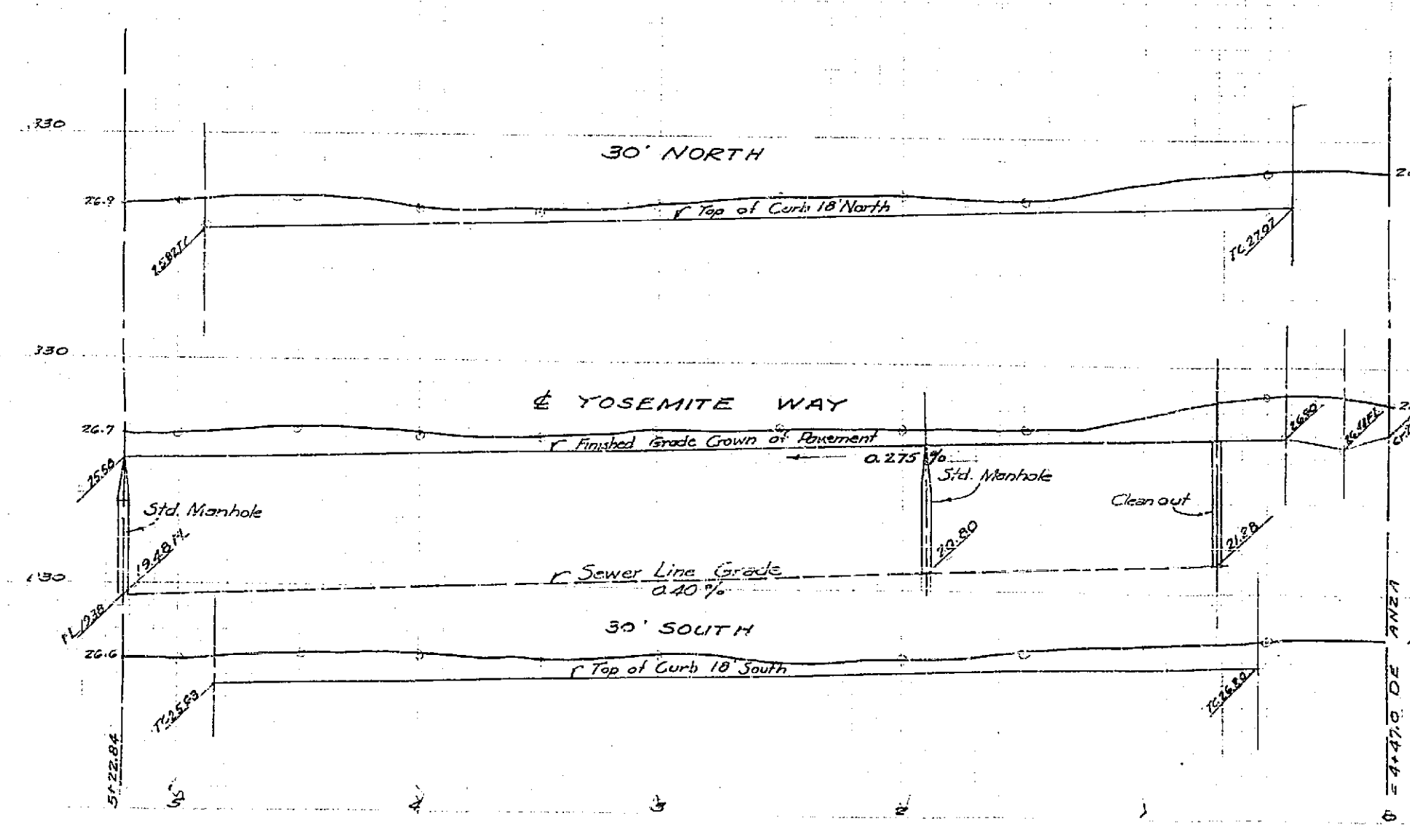
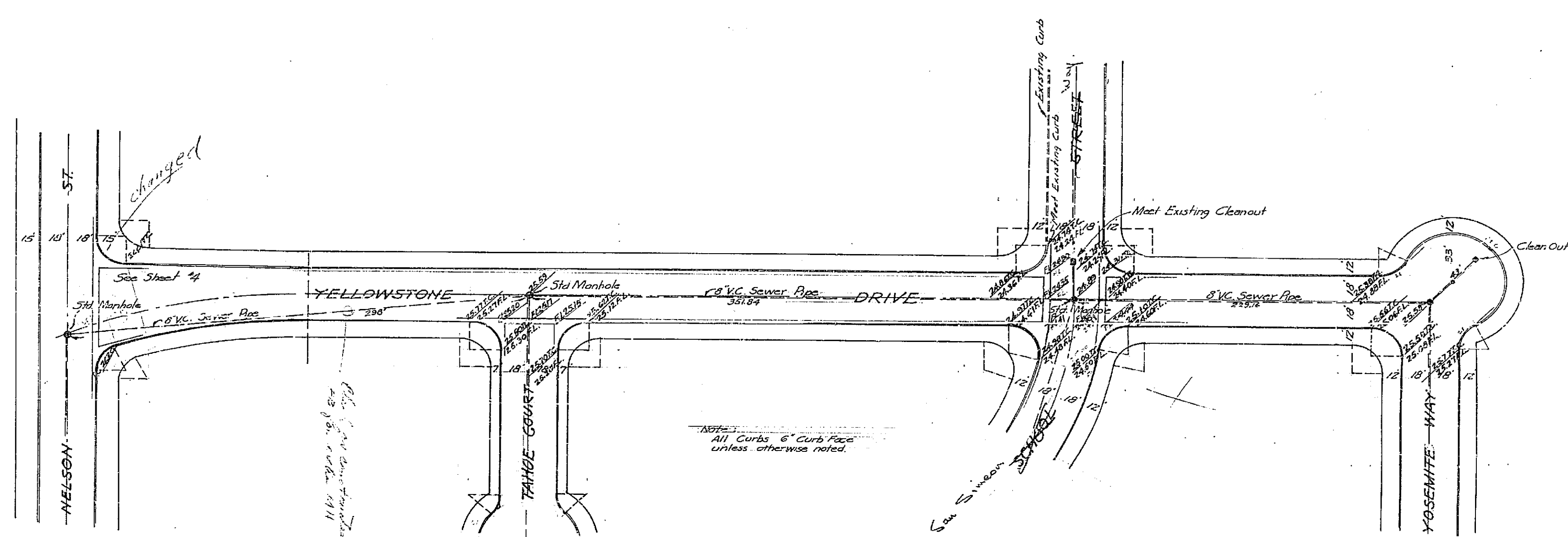
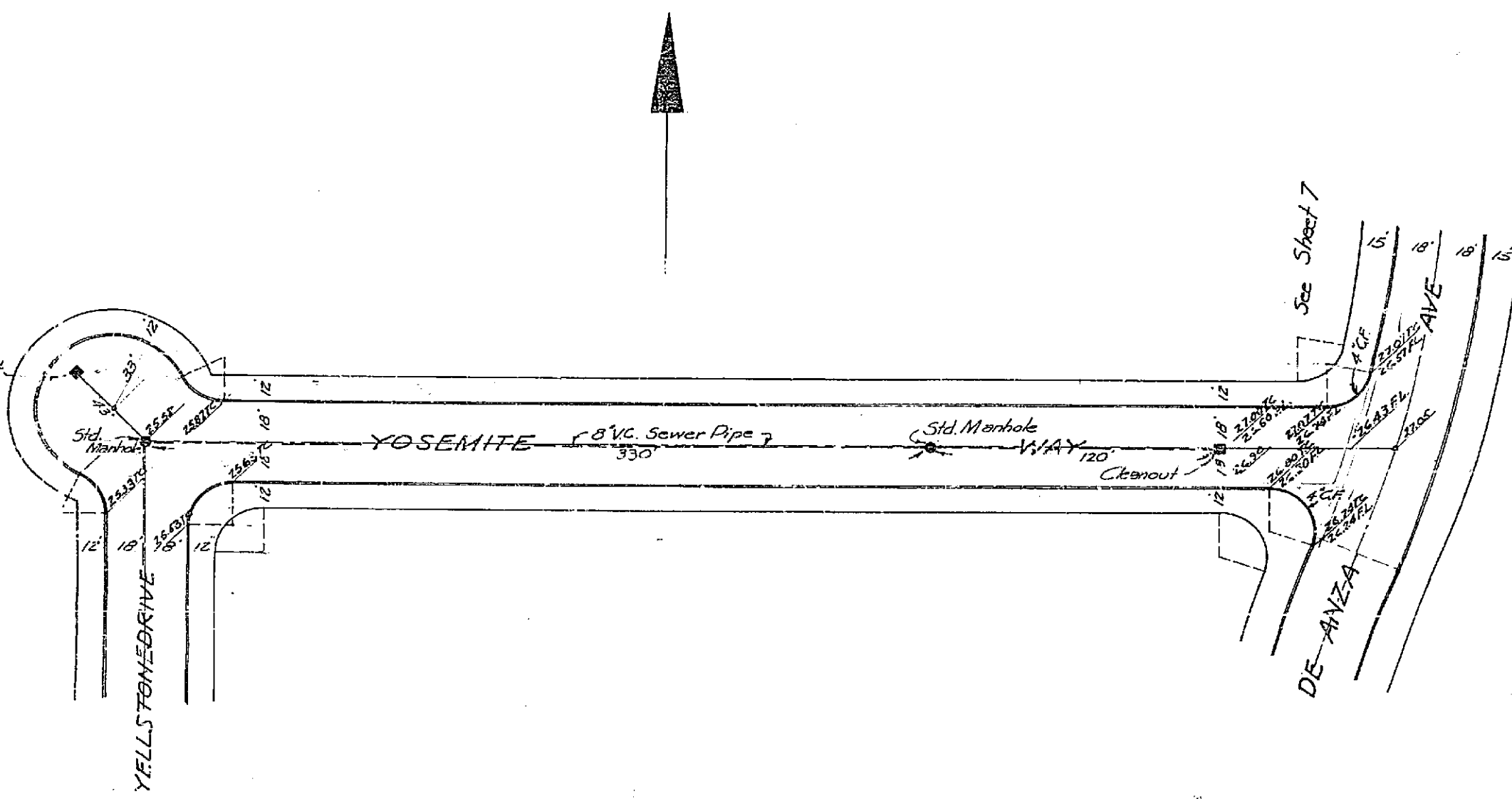


Note: All Curb Face 6" with Combination Gutter unless otherwise noted.

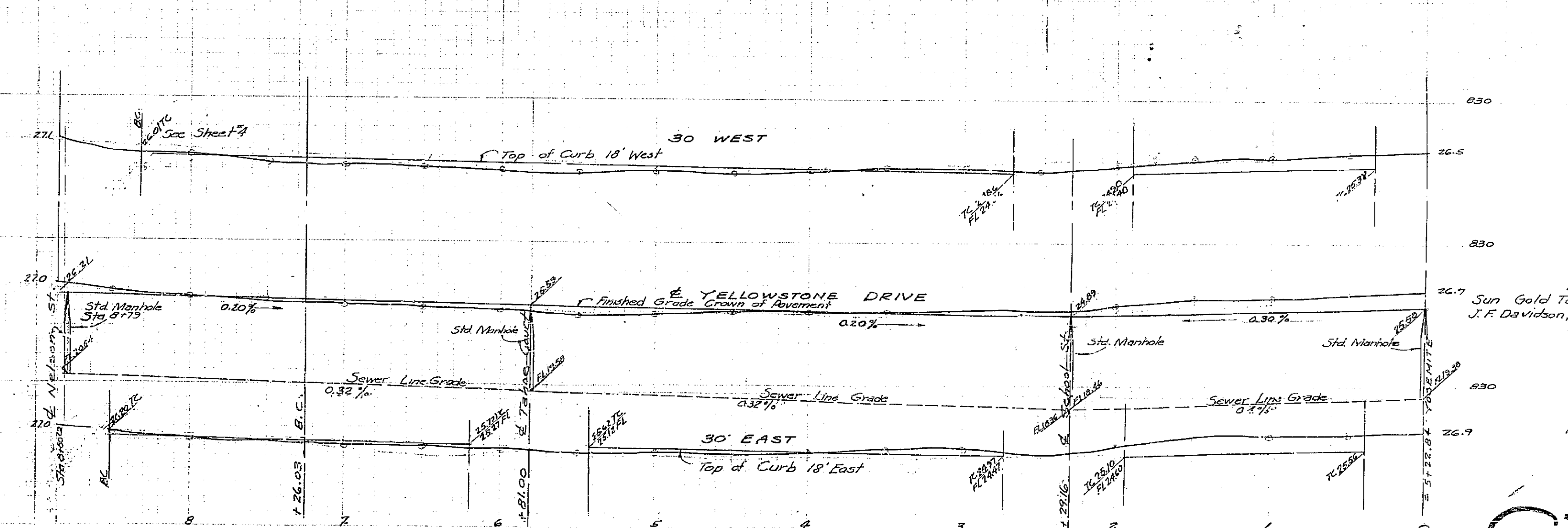


973

F.B. 415



Plan and Profile
Sun Gold Terrace - YOSEMITE WAY.
J.F. Davidson, C.E. Dec. 1950
Scale: Horz. 1" = 40'
Vert. 1" = 4'

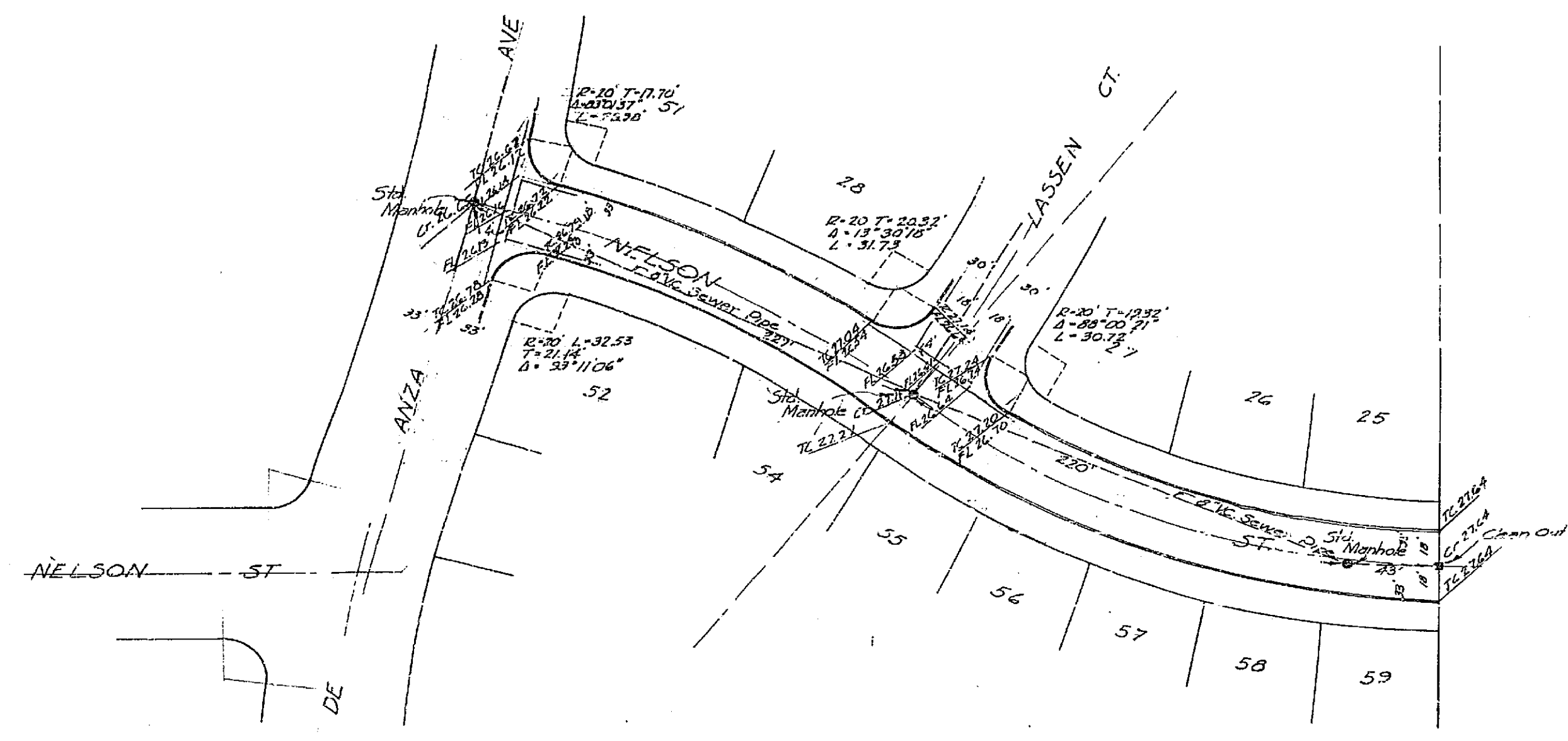
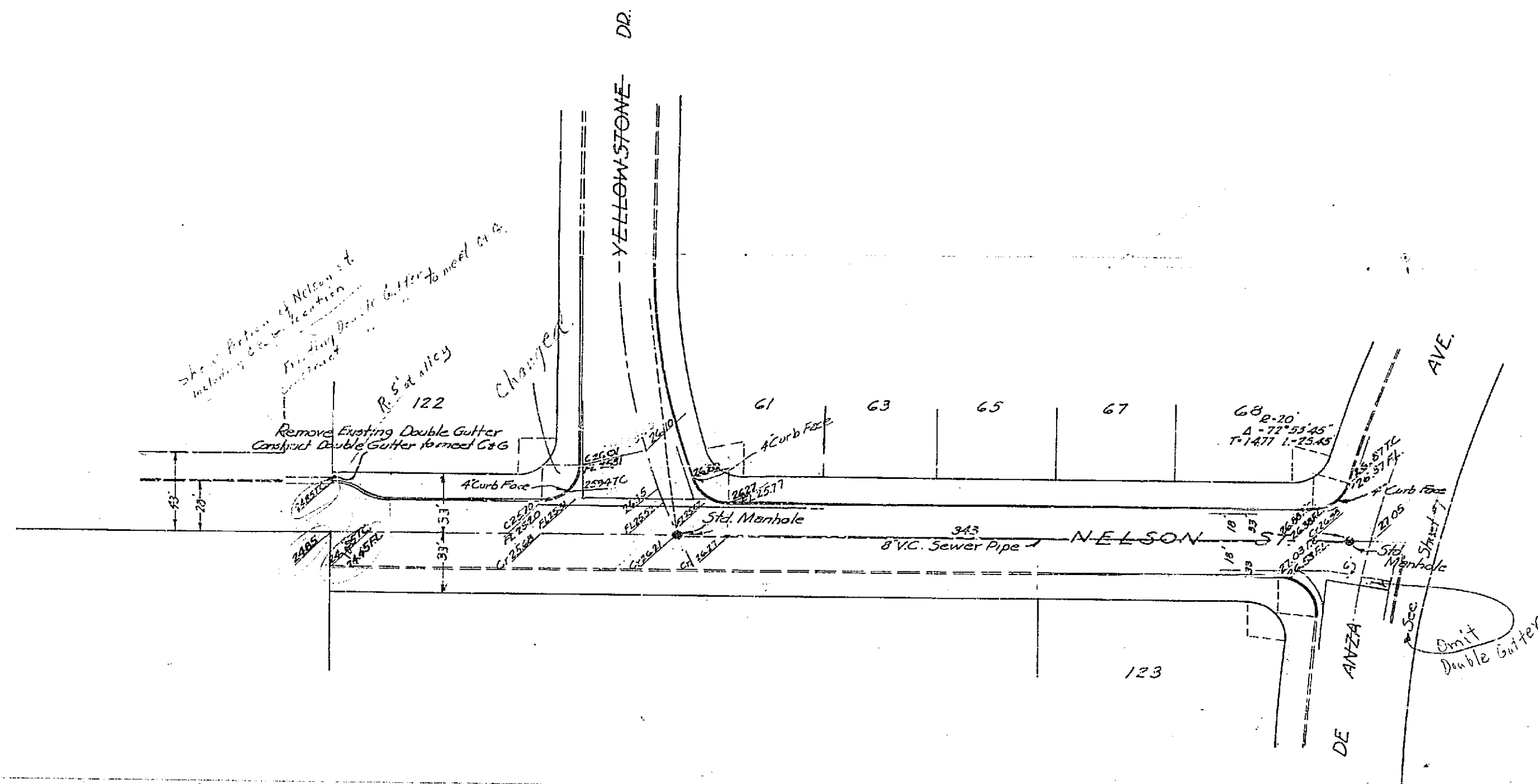


Plan and Profile
Sun Gold Terrace - YELLOWSTONE DRIVE
J.F. Davidson, C.E. Dec. 1950
Scale: Horz. 1" = 40'
Vert. 1" = 4'

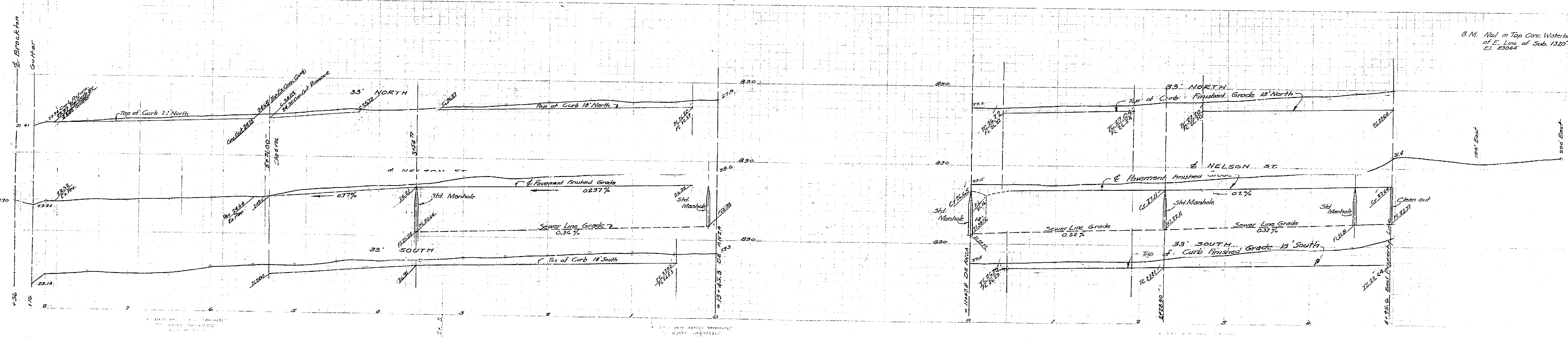
Approved: M.N. Davina
City Engineer

973

F.B. 415 - 34-35
CITY OF PASADENA
ENGINEERING



Note:
All Curbs @ Curb Face
unless otherwise noted.

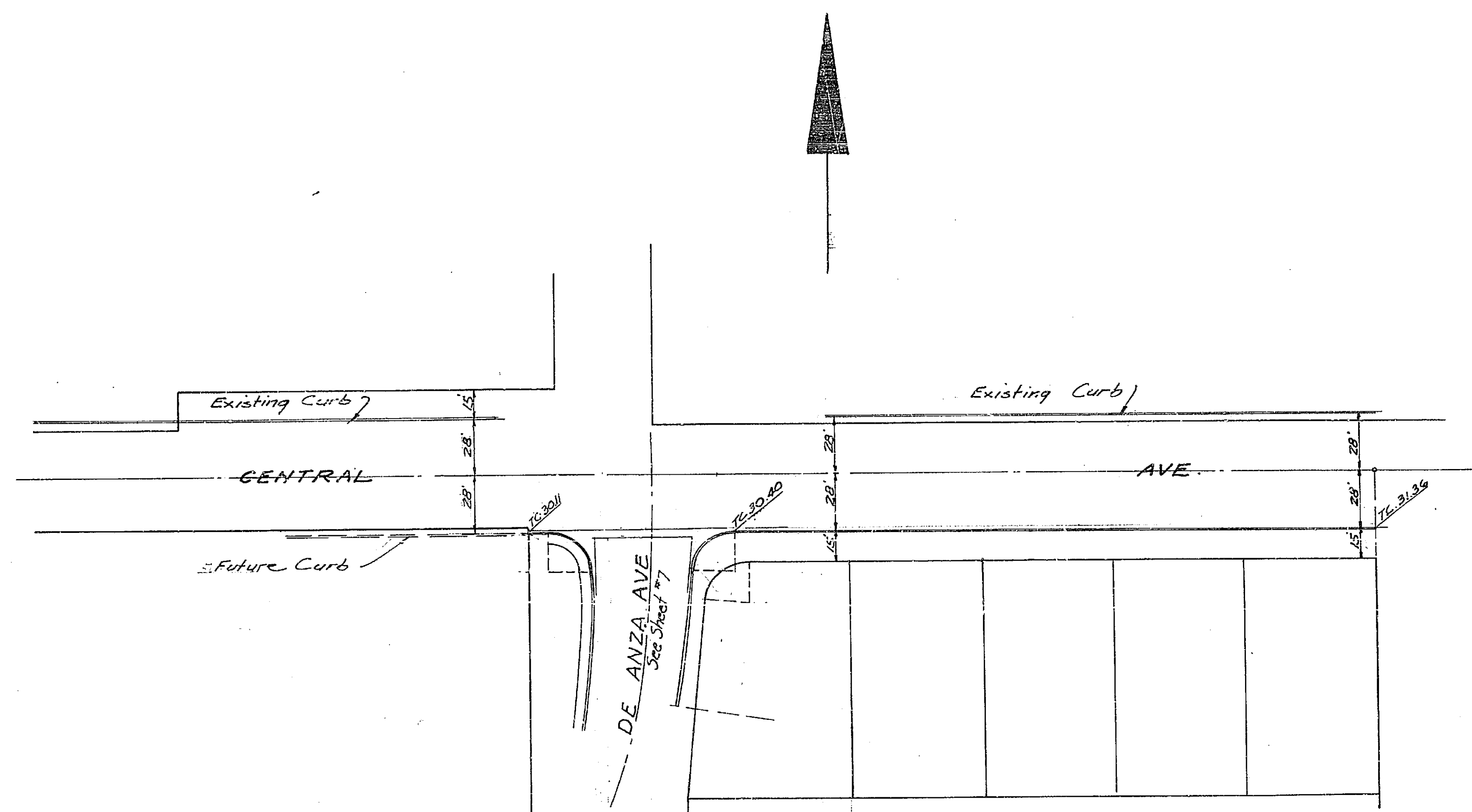


Plan and Profile
Sun Gold Terrace - NELSON
J.F. Davidson C.E.
Scale Horiz 1"=40'
Vert 1"=4'

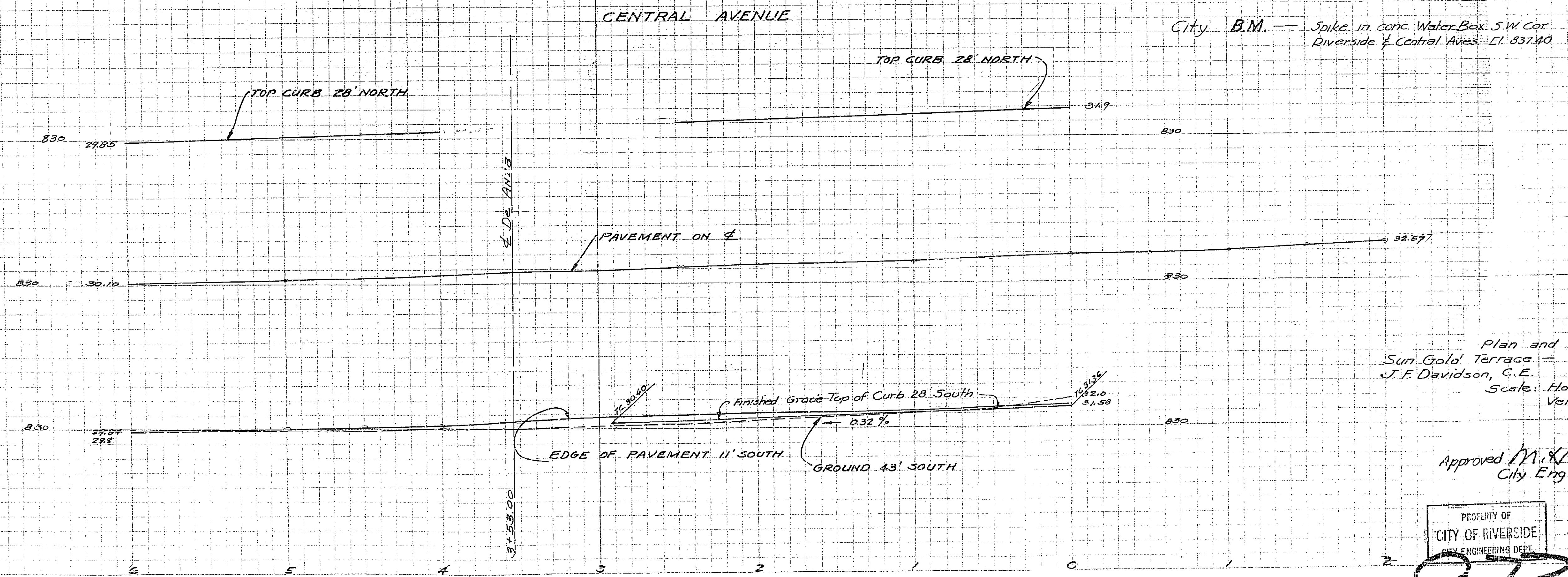
Approved [Signature]
City Eng.

973

PROF. J.F. DAVIDSON
CITY ENGINEER



Heers Sub No 3



Plan and Profile
Sun Gold Terrace - ARLINGTON AVE.
J.F. Davidson, C.E. Dec, 1950.
Scale: Horz. 1" = 40'
Vert. 1" = 4'

Plan and Profile
Sun Gold Terrace - CENTRAL AVE.
J.F. Davidson, C.E.
Scale: Horz. 1" = 40'
Vert. 1" = 4'

Approved M. J. Davidson
City Engineer

PROPERTY OF
CITY OF RIVERSIDE
ENGINEERING DEPT.

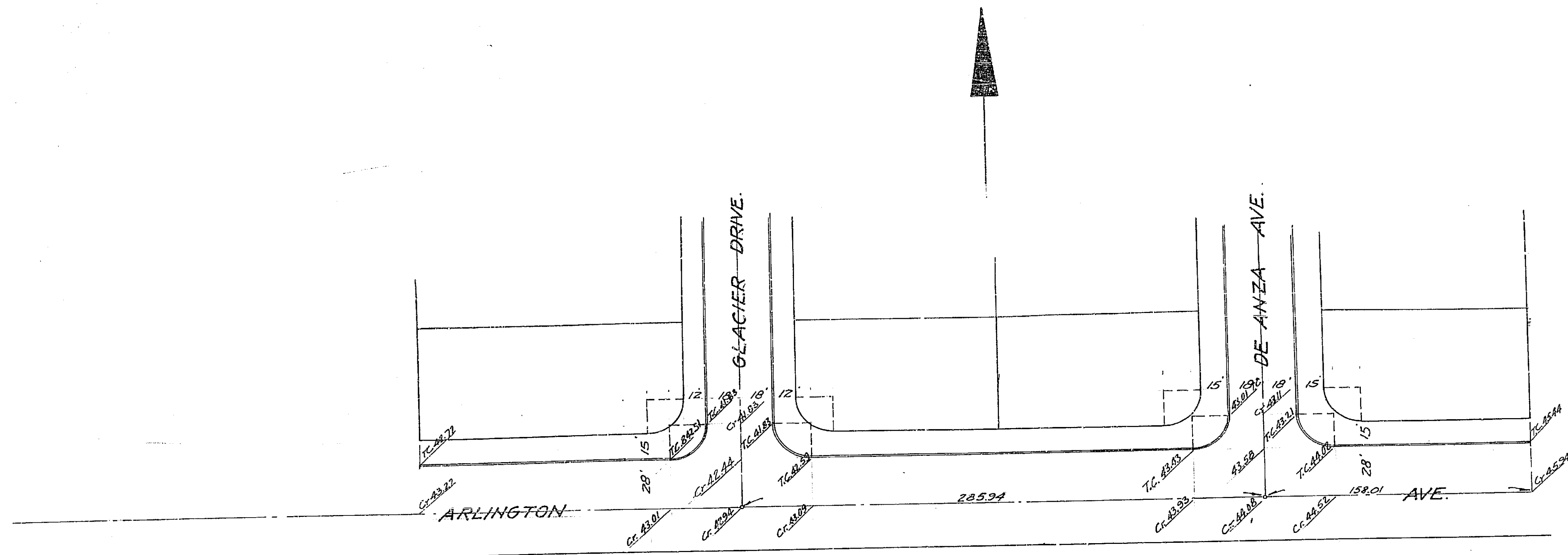
973

F.B. 415-21-25

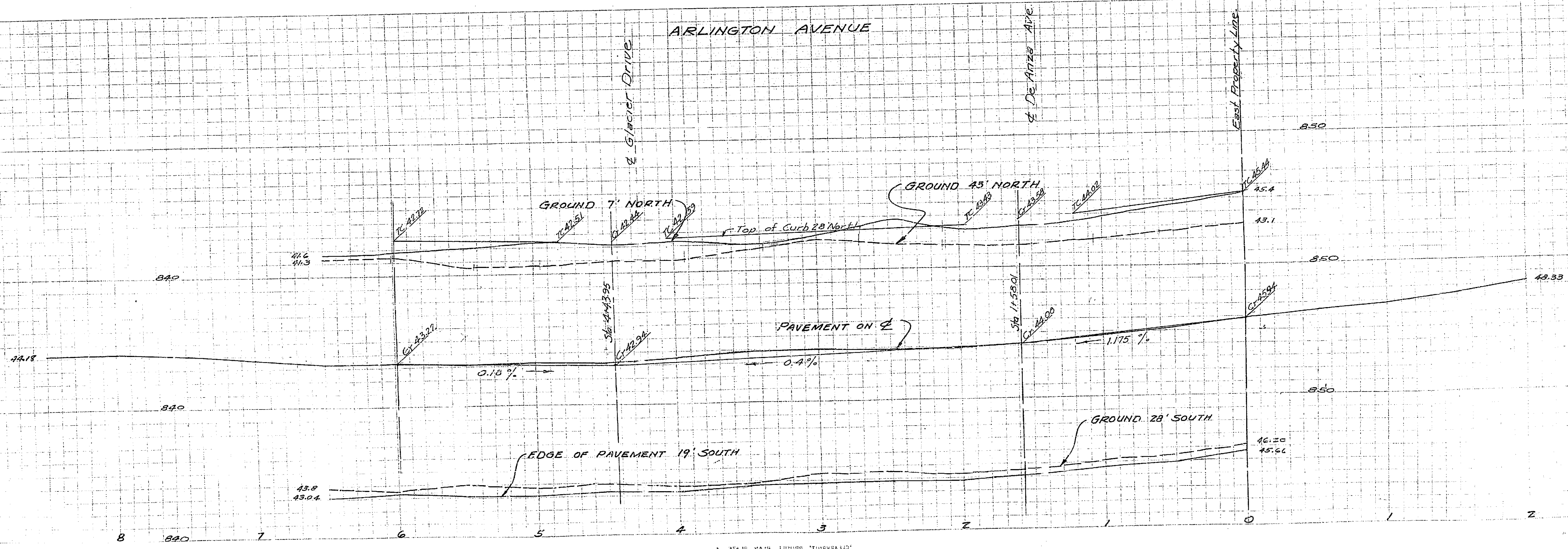
FRAME 112

MADE IN U.S.A.
ENGINEERING PAPER
FEDERAL RESERVE BANK

PROPERTY OF
CITY OF RIVERSIDE
ENGINEERING DEPT.



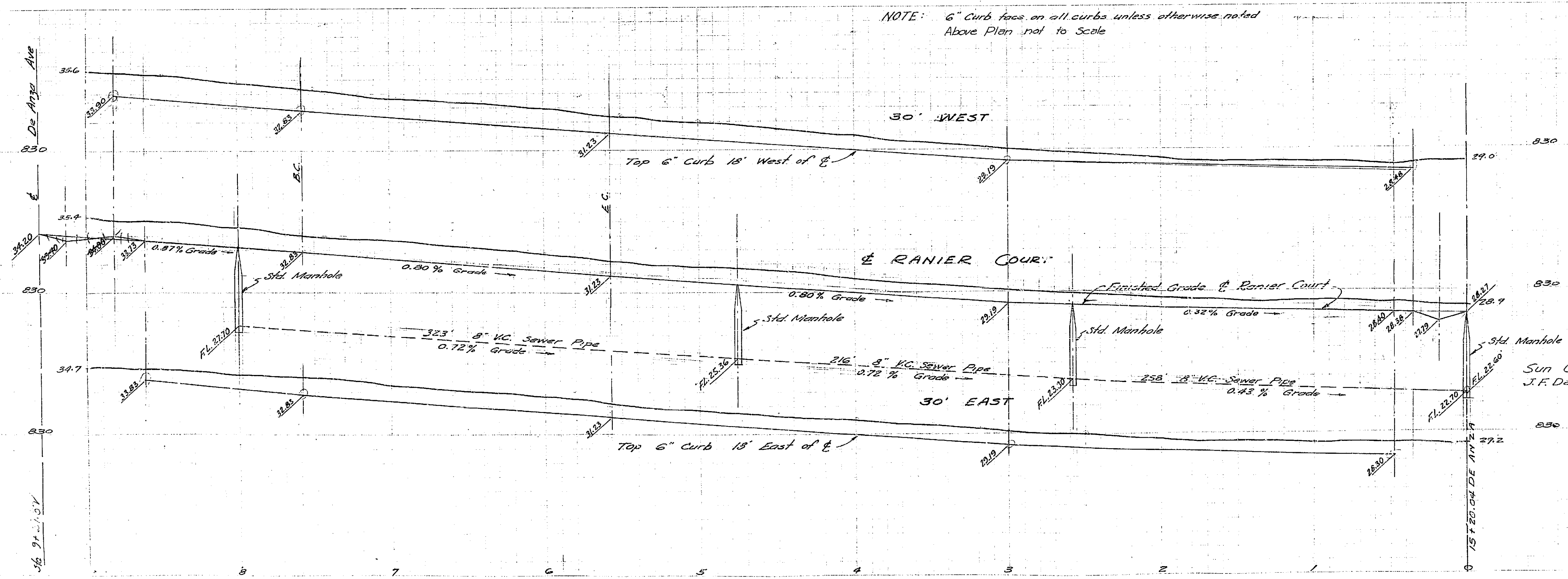
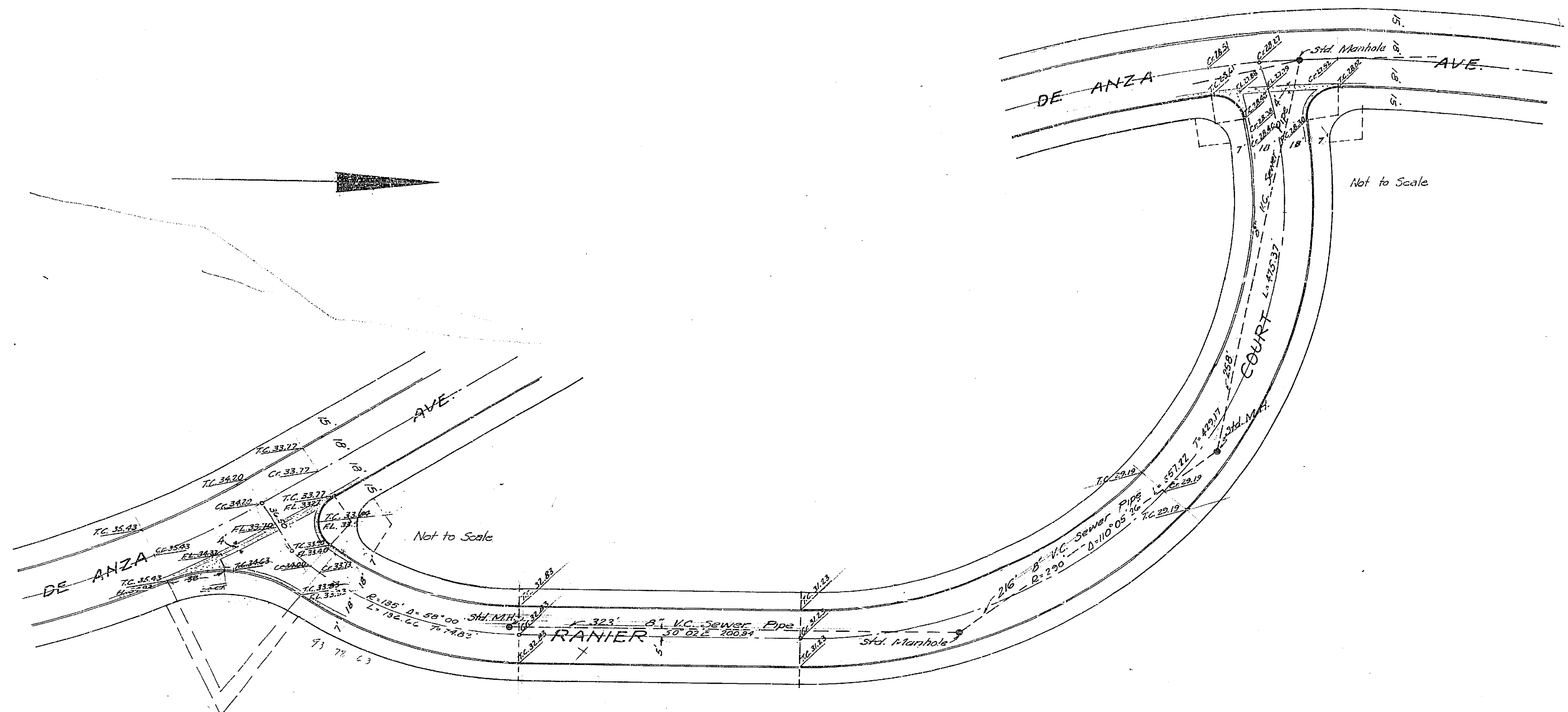
*Curve shown
where?*



Plan and Profile
Sun. Gold Terrace - ARLINGTON
J. F. Davidson, C.E. Dec.
Scale: Horiz. 1" = 40'
Vert. 1" = 4'

MADE IN U.S.A.
CLEBRIME PA. R. CO.
CENTRALLY PRINTED FROM PLATE A

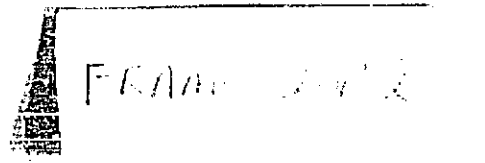
FRANK J. JONES

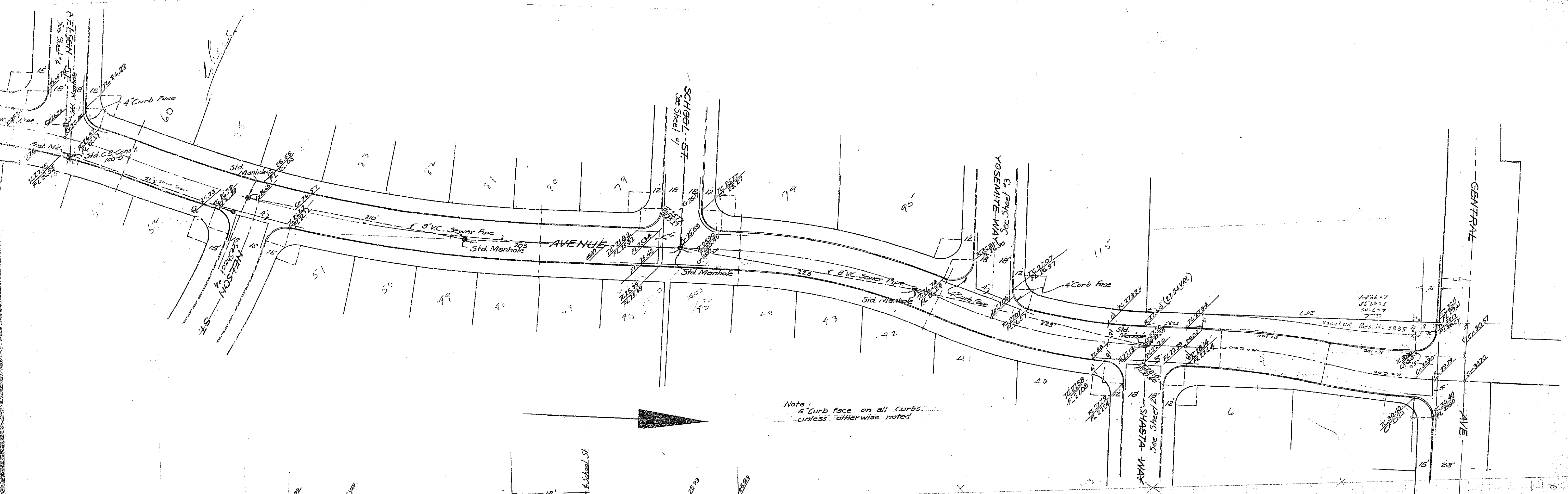
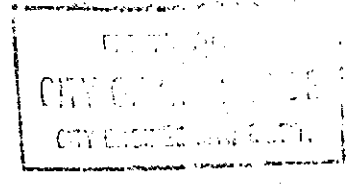


NOTE: 6" Curb tops on all curbs unless otherwise noted
Above Plan not to Scale

Plan and Profile
Sun Gold Terrace - RANIER COURT
J.F. Davidson, C.E. Dec. 1950.
Scale: Horz. 1" = 40'
Vert. 1" = 4'

Approved *M. H. Quinn*
City Engineer





Note: 6" Curb face on all Curbs unless otherwise noted

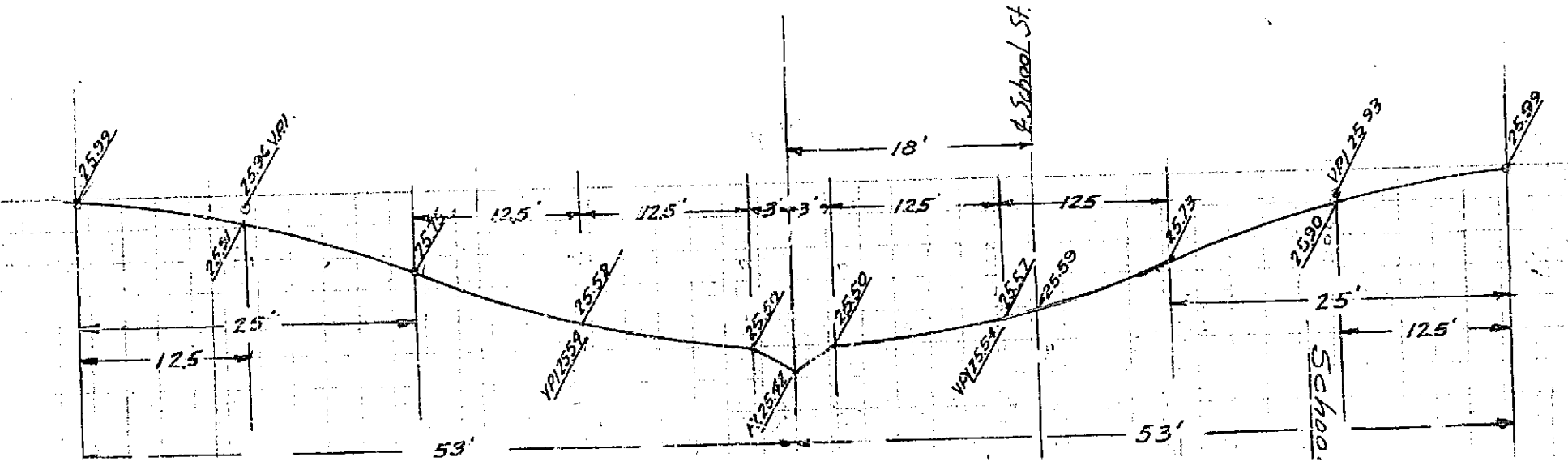
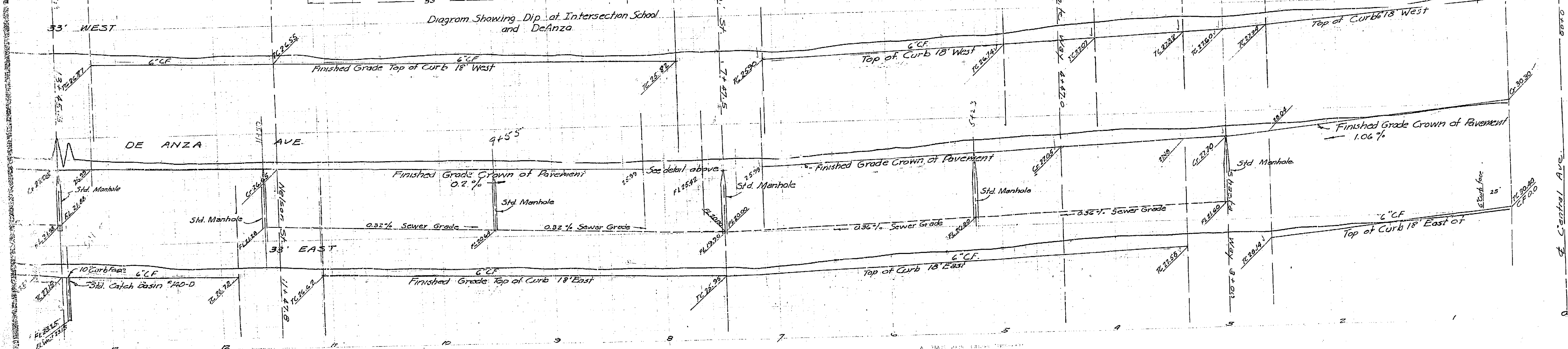


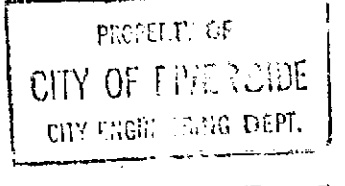
Diagram Showing Dip at Intersection School and De Anza



City B.M. - Spike & Lead in Conc. Water... Cor. Riverside & Central Ave.

Plan and Profile Sun Gold Terrace-DE ANZA AVE. J.F. Davidson, C.E. Dec. 1950 Scale: Horz. 1"=40' Vert. 1"=4'

Approved M.H. Swinner City Engineer

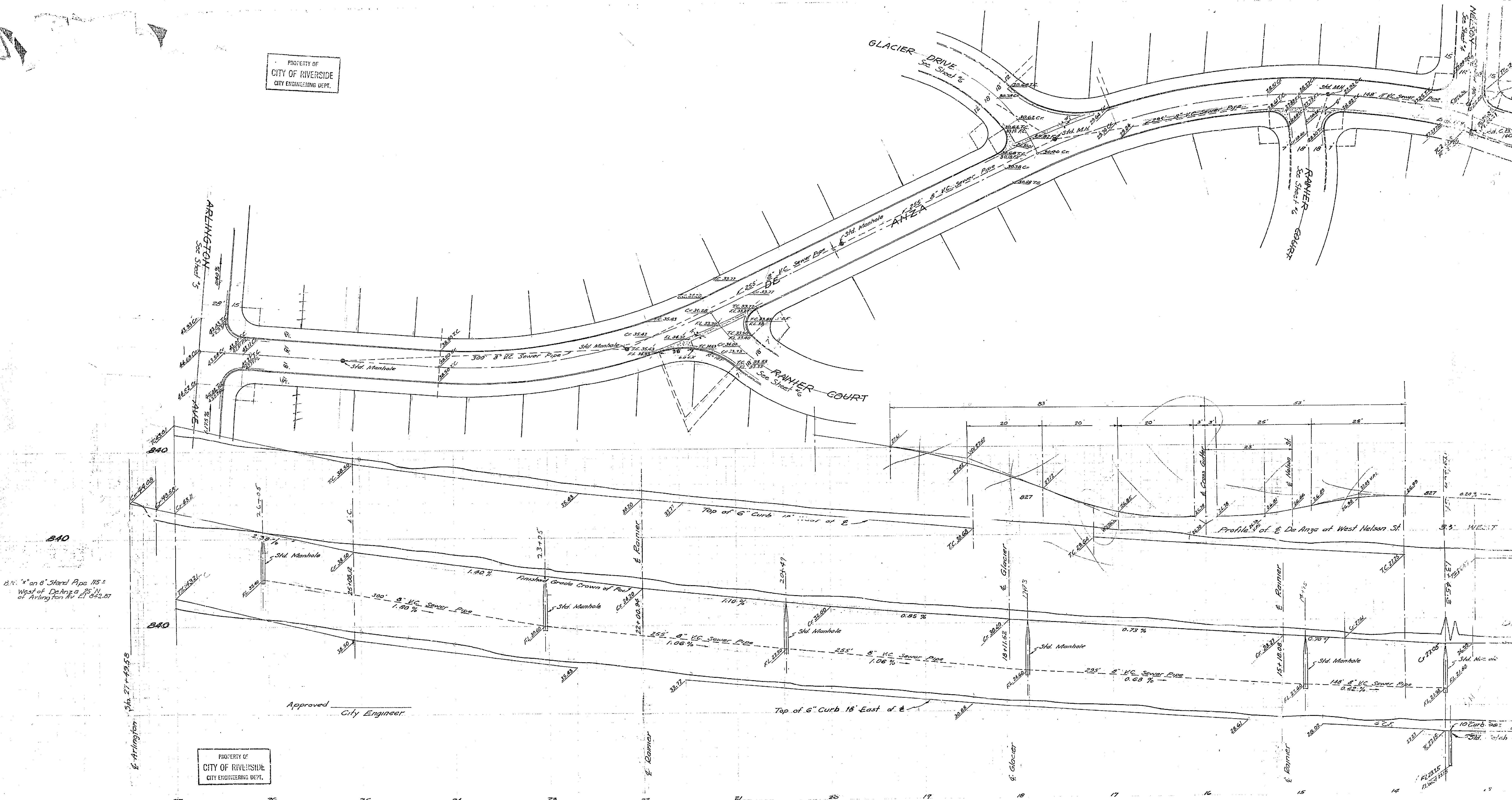


F.B. 415-570

973

FRAME 112

PROPERTY OF
CITY OF RIVERSIDE
CITY ENGINEERING DEPT.



2 1/2" x 8" on 6" Sford Pipe 115'±
West of De Anza 25' N.
of Arlington Av E1 642.87

PROPERTY OF
CITY OF RIVERSIDE
CITY ENGINEERING DEPT.

1111