

ASSESSMENT NO. 383  
DIAGRAM

EXHIBITING TENTH STREET IMPROVEMENT DISTRICT

IN THE CITY OF RIVERSIDE ON WHICH WORK HAS BEEN DONE UNDER MY OFFICIAL CONTRACT AS SUPERINTENDENT OF STREETS OF SAID CITY WITH C.O. BRAND DATED SEPT. 28, 1953

FOR THE CONSTRUCTION OF COMBINATION CURB & GUTTER AND DOUBLE GUTTER

AS IS MORE PARTICULARLY DESCRIBED IN SAID CONTRACT TO WHICH REFERENCE IS HEREBY MADE FOR FURTHER PARTICULARS; SAID DIAGRAM ALSO SHOWS THE RELATIVE LOCATION OF EACH LOT PORTION OF LOT PIECE OR PARCEL OF LAND ASSESSED FOR THE WORK DONE NUMBERED IN CIRCLES TO CORRESPOND TO THE RED INK NUMBERS IN THE ASSESSMENT

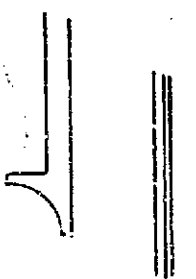
HEREIN FIGURES NEXT TO PROPERTY LINES SHOW LENGTH OF SAID LINES IN FEET. THE MARK (') MEANS FEET. PROPERTY LINES THAT DIFFER FROM THE RECORDED SUBDIVISIONS ARE SHOWN BY BROKEN LINES. THE DISTRICT BENEFITED IS BOUNDED BY A HEAVY DASHED LINE

PROPERTY COVERED BY THIS ASSESSMENT IS SHOWN ON THE FOLLOWING RECORDED MAPS:

GARFIELD PLACE M.B. 9, PG. 27, REC. SB. CO.

974

HEREIN THE LEGEND OF THE DIFFERENT KINDS OF WORK PERFORMED IS SHOWN AS FOLLOWS:

COMBINATION CURB & GUTTER 

DOUBLE GUTTER 

COMBINATION CURB & GUTTER 1024.80 LIN. FT.  
DOUBLE GUTTER 42373 SQ. FT.

CITY ENGINEER OF THE CITY OF RIVERSIDE  
THE FOLLOWING IS A STATEMENT OF AMOUNTS OF DIFFERENT KINDS OF WORK DONE BY C.O. BRAND UNDER CONTRACT DATED SEPT. 28, 1953 PURSUANT TO RESOLUTION OF INTENTION NO. 5887 ADOPTED BY THE CITY COUNCIL OF THE CITY OF RIVERSIDE ON THE 7TH DAY OF JULY 1953

AT SAID CITY OF RIVERSIDE THIS DAY OF

CITY ENGINEER  
OF THE CITY OF RIVERSIDE

CITY ENGINEER  
OF THE CITY OF RIVERSIDE

I HEREBY CERTIFY THAT THE ABOVE WORK WAS DONE IN ACCORDANCE WITH LINES AND GRADES FURNISHED BY ME AND THAT THE DIAGRAM OF THE ASSESSMENT DISTRICT FOR THE SAME IS CORRECT.

RECORDED AT 8:30 O'CLOCK A.M.  
THIS 6TH DAY OF JANUARY 1954

SUPERINTENDENT OF STREETS  
OF THE CITY OF RIVERSIDE

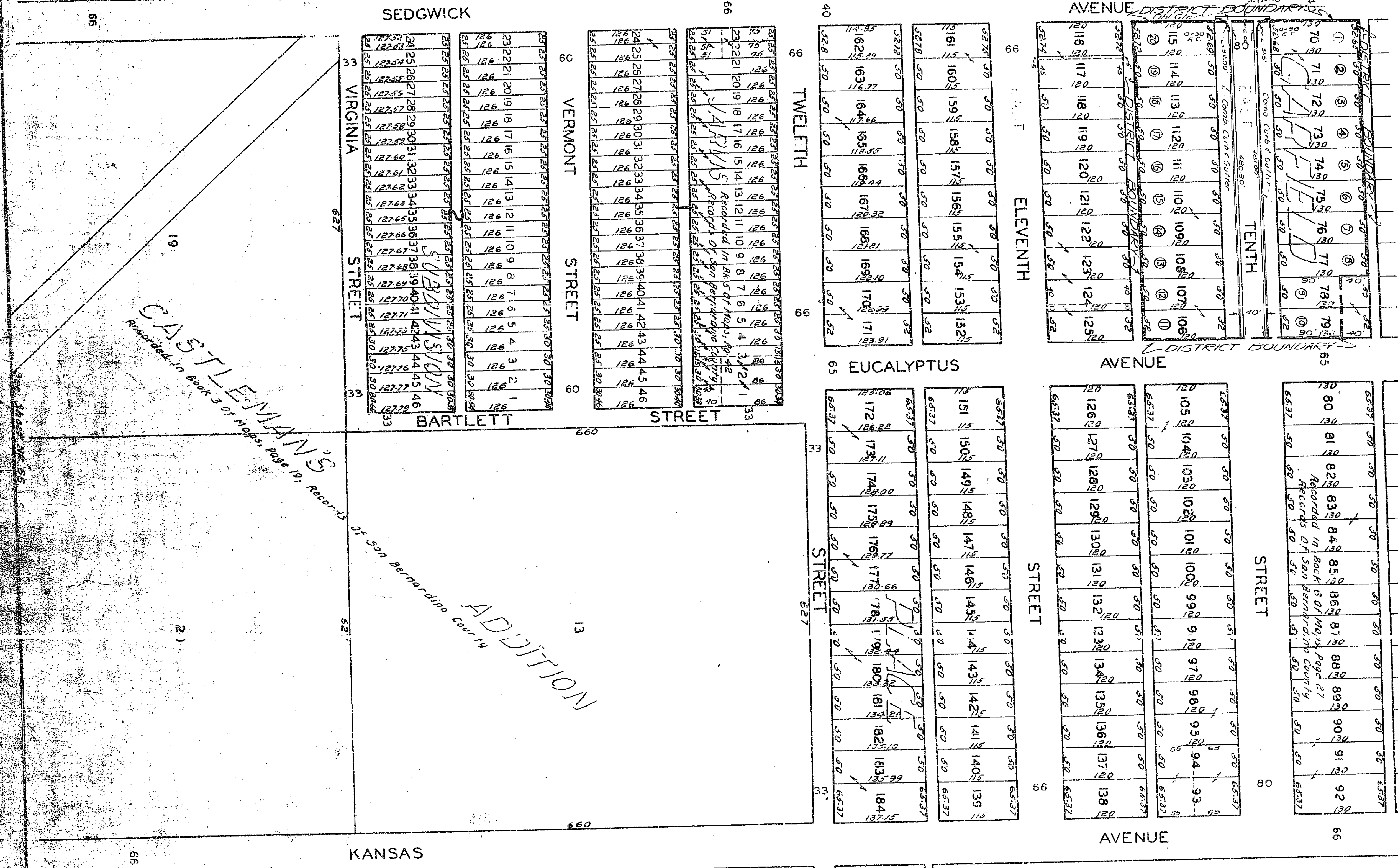
976

Scale - 1" = 100'



See Sheet No 54

See Sheet No 43



See Sheet No 53

97A