

LAN
 HOR. 1" = 20'
 VER. 1" = 6'

23+41.4' 20'
 21.5 31.5
 21.5 5.76
 12.13
 10.6
 96.2 142.93
 18.2
 See Sheet N 2

11,475.
 5,808
 17,383

50103.14
 1210
 4991.04
 99.82070
 1744.
 296.6
 142.93
 496.6
 508.0
 85.24
 9) 103274.77
 11475.597 ac.

← | → TRAM L 12

975

PLANS AND PROFILES

OF THE PROPOSED IMPROVEMENT OF

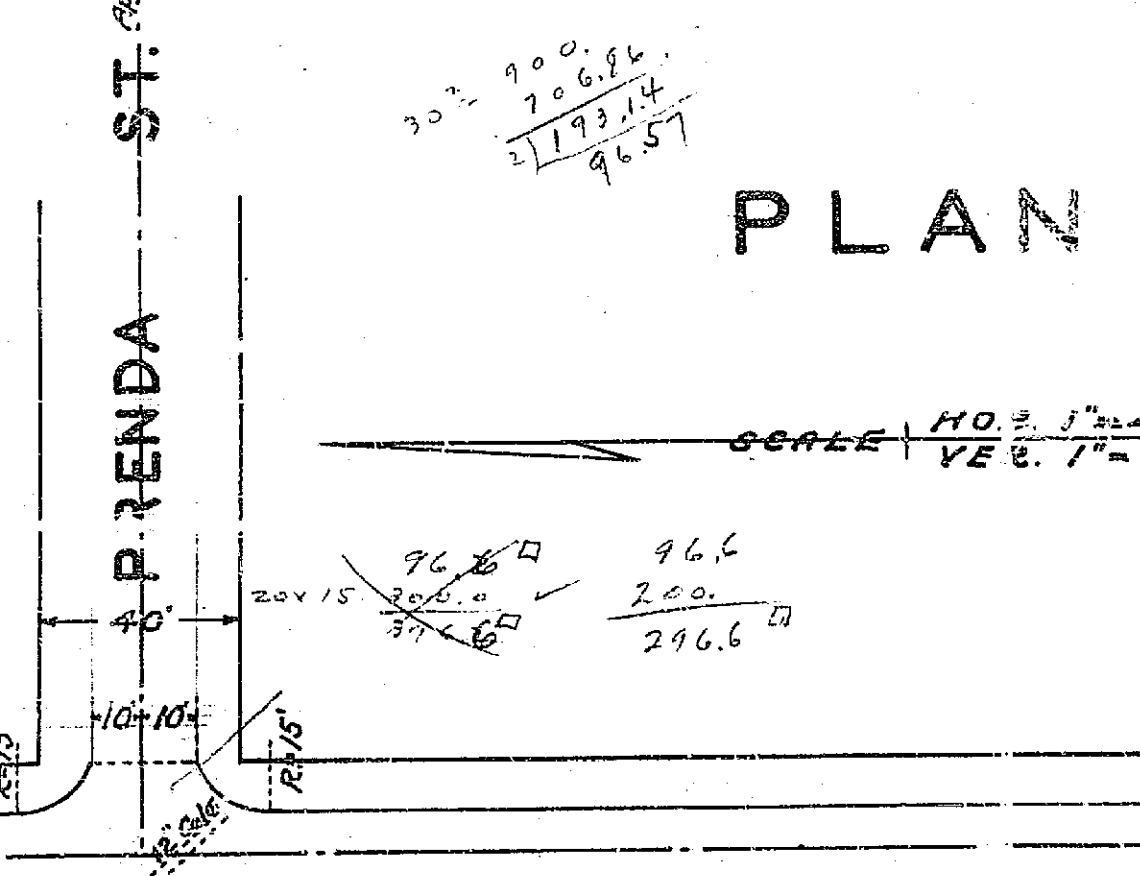
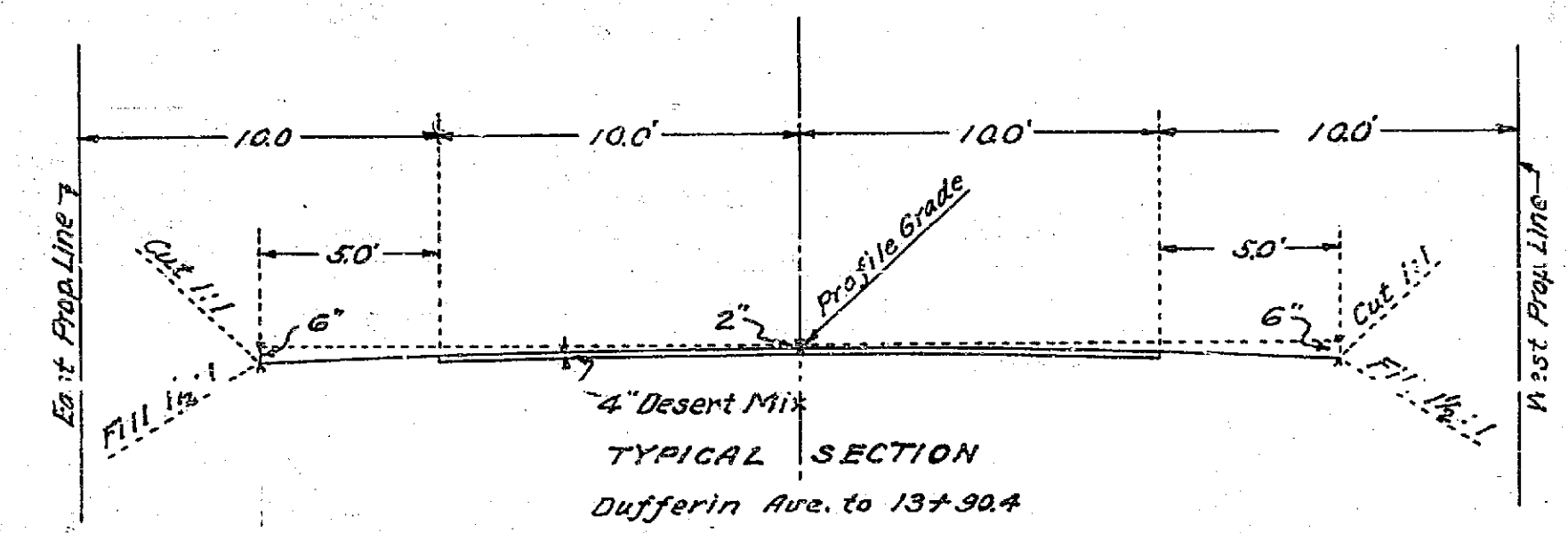
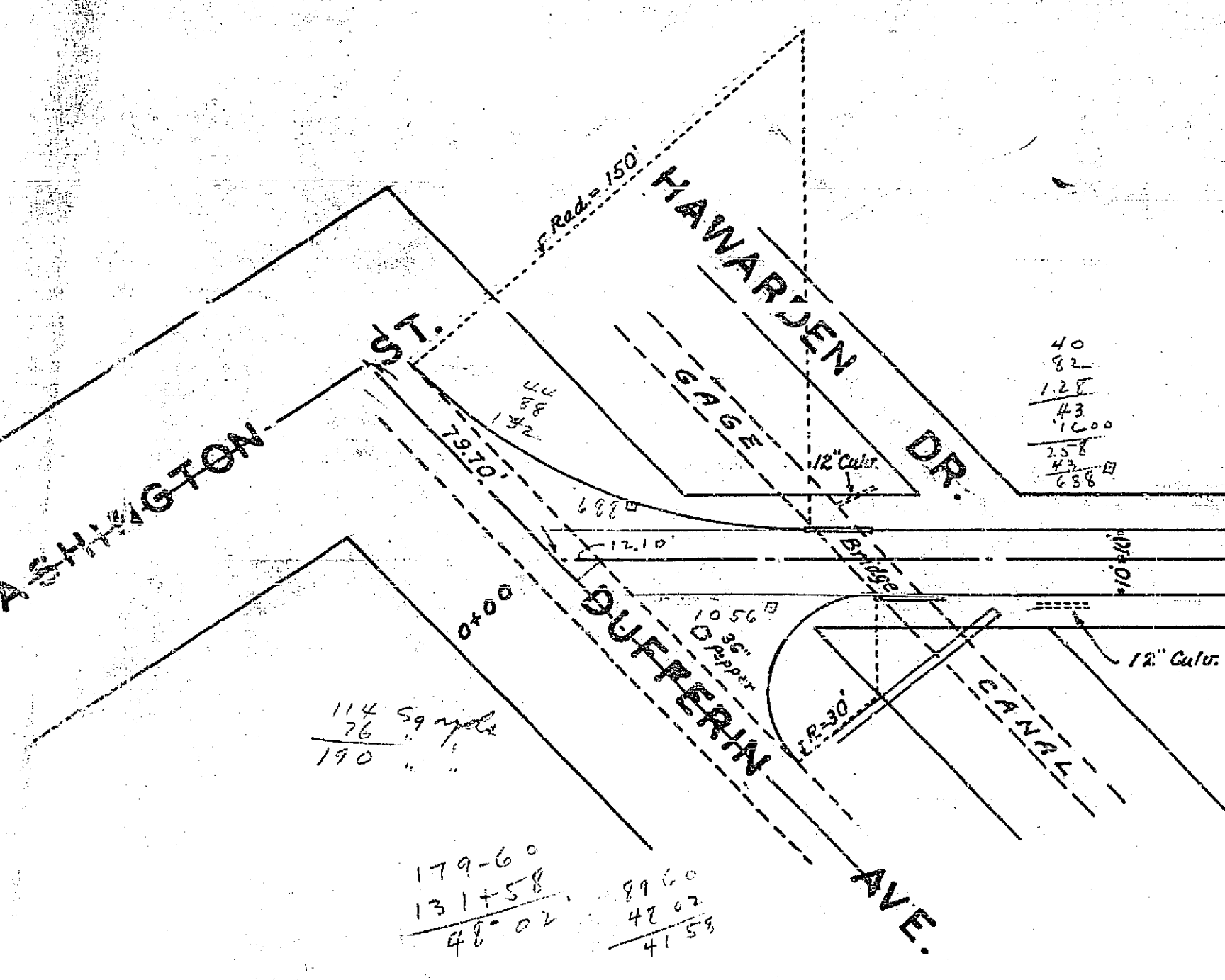
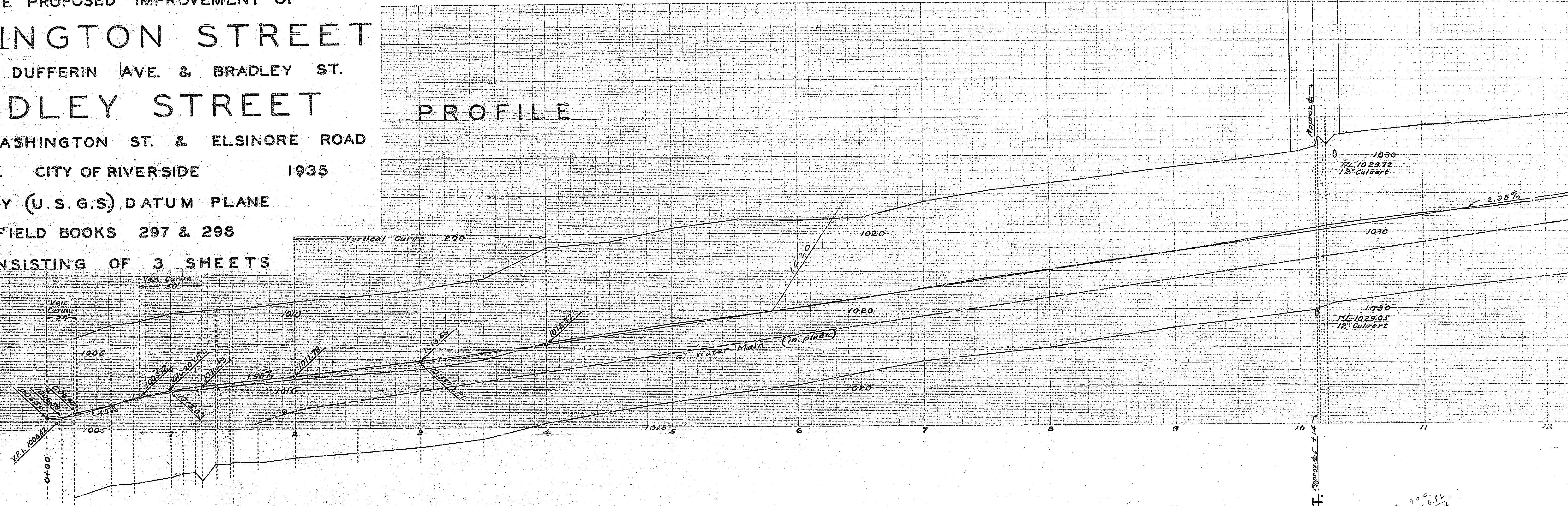
WASHINGTON STREET

BETWEEN DUFFERIN AVE. & BRADLEY ST.

BRADLEY STREET

BETWEEN WASHINGTON ST. & ELSINORE ROAD
 ENG. DEPT. CITY OF RIVERSIDE 1935
 CITY (U.S.G.S.) DATUM PLANE
 FIELD BOOKS 297 & 298
 CONSISTING OF 3 SHEETS

PROFILE



114 59 angle
 76
 170

179-60
 131+58
 46-02

89 60
 42 67
 41 58

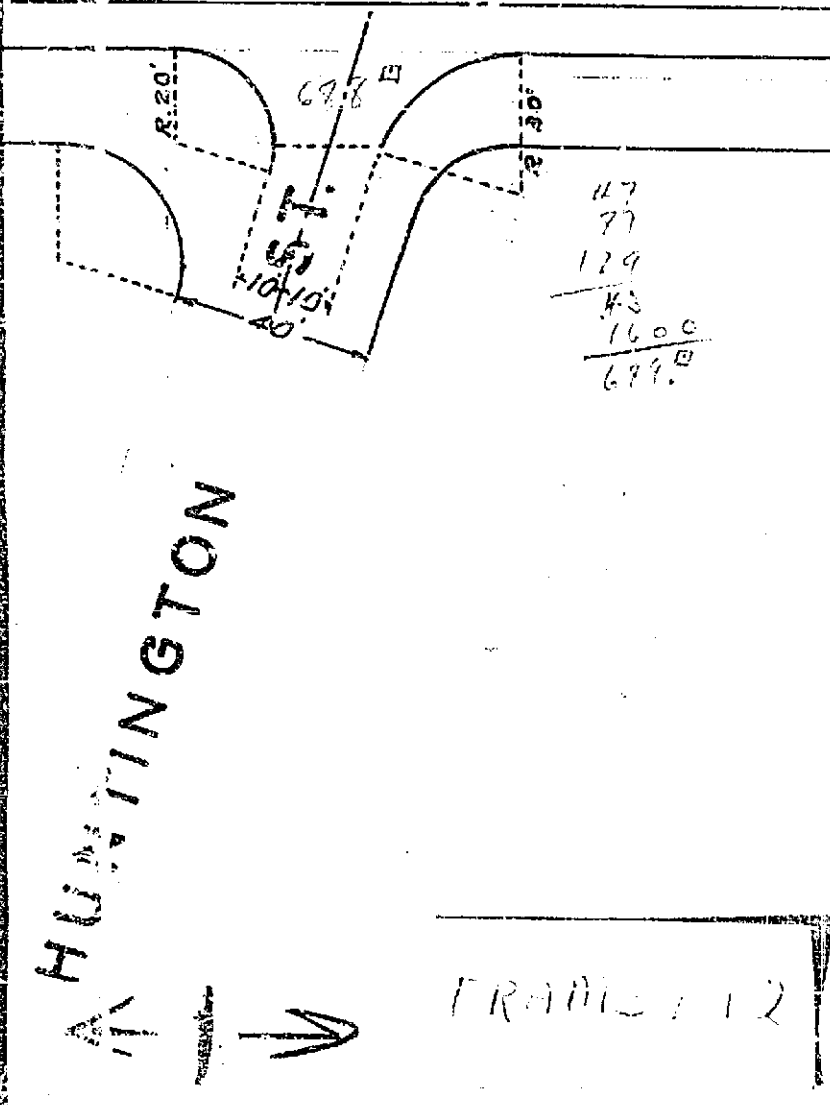
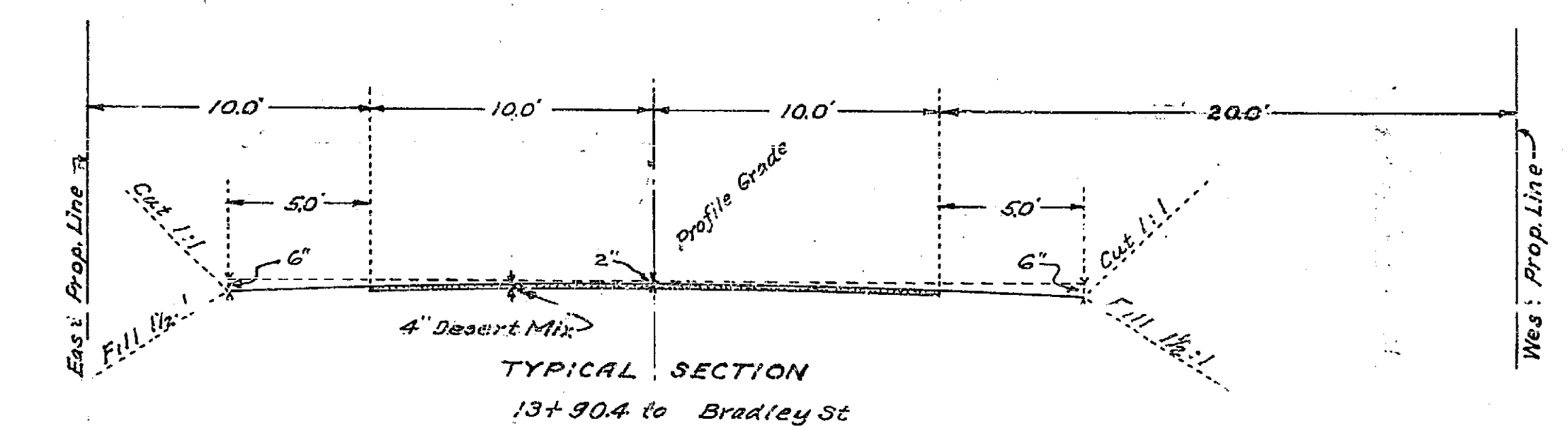
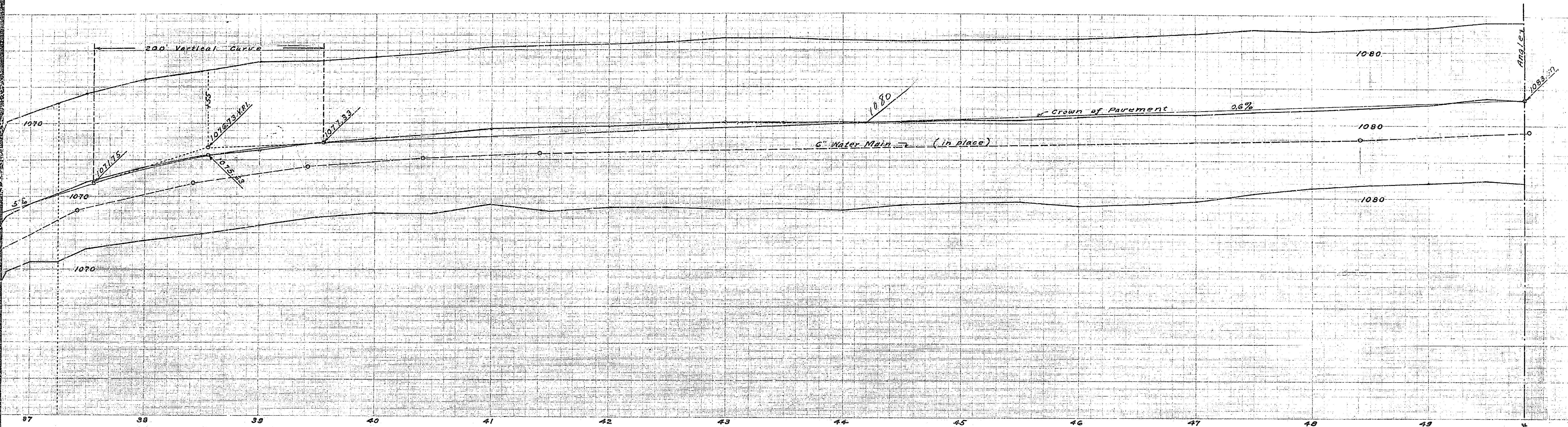
66
 131
 199
 66
 16
 196
 66
 1050
 893
 1744

7617
 12
 7605
 20
 152100

Sy 30
 Cur 30' dia Area - 706.85
 2193.15
 2196.6
 48.2

APPROVED AND ADOPTED BY THE MAYOR
 AND COUNCIL OF THE CITY OF RIVERSIDE
 THIS 4TH DAY OF JUNE 1935.

Street Clerk
 CITY CLERK, CITY OF RIVERSIDE.



1800
1256.64
4) 34336
8584

975

BRADLEY

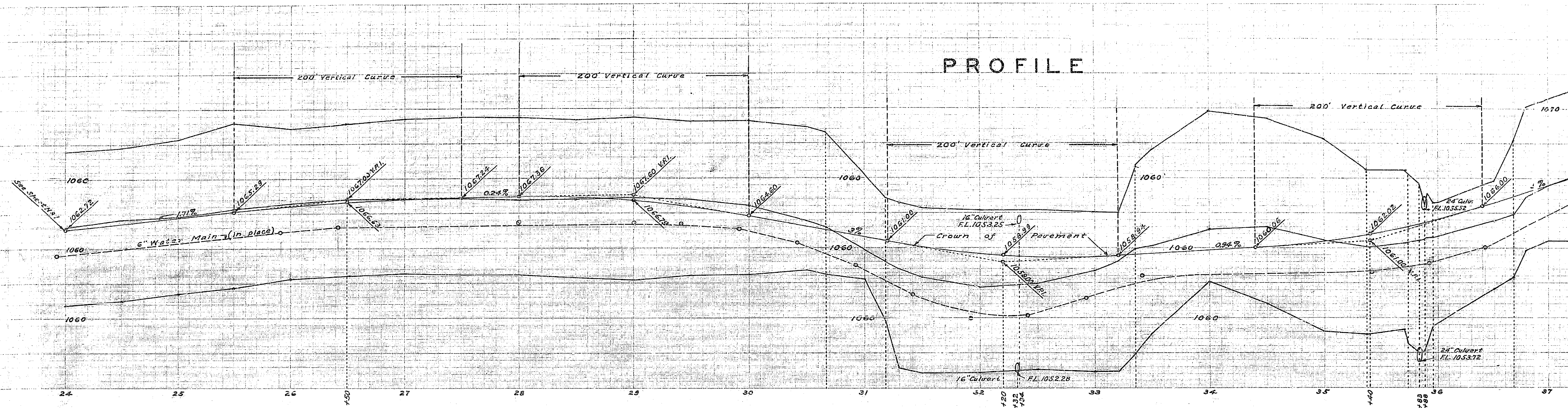
STREET

STREET

Stations along Land Line

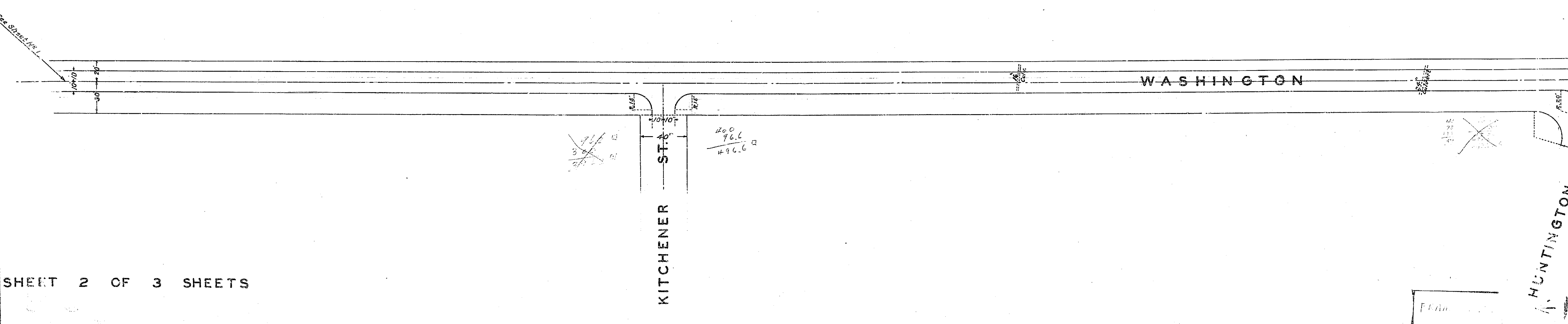
See Sheet

PROFILE



PLAN

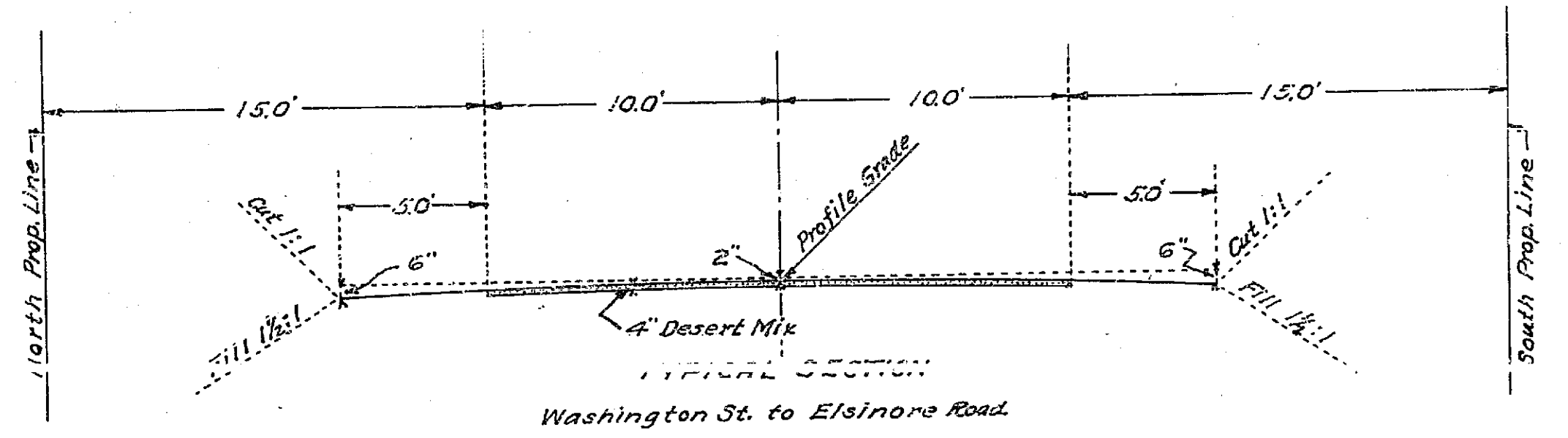
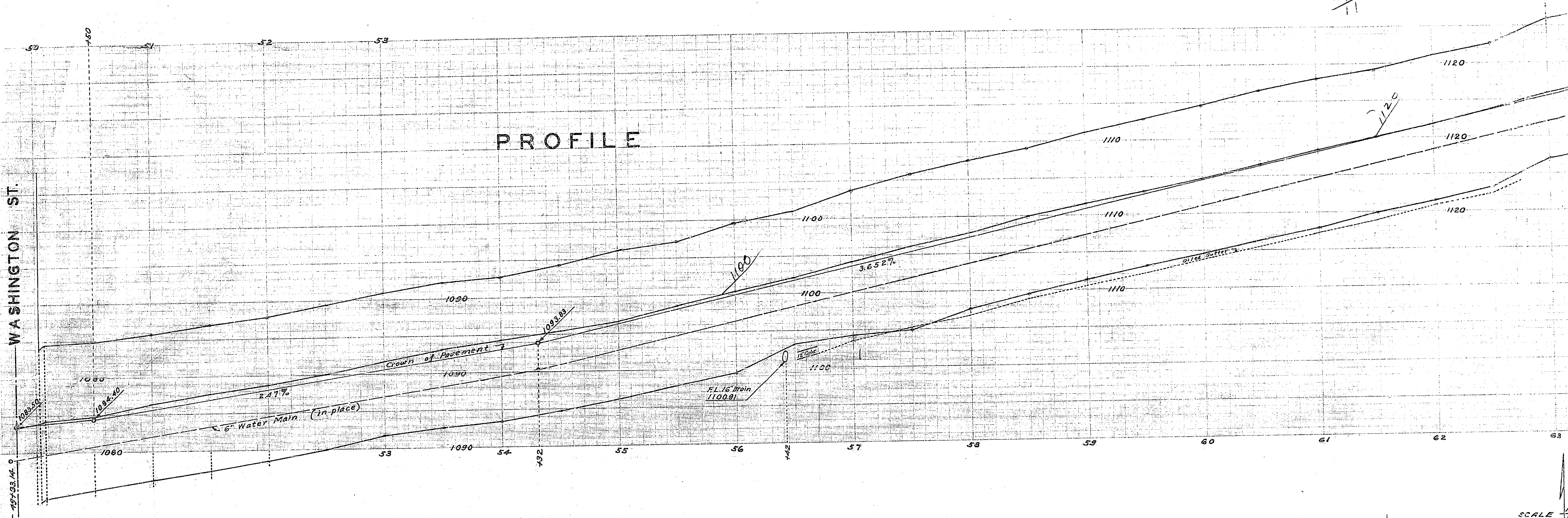
SCALE | HOR. 1" = 40' | VER. 1" = 6'



61750
49+83
11
67

WASHINGTON ST.

PROFILE



SCALE
H
V
PLA

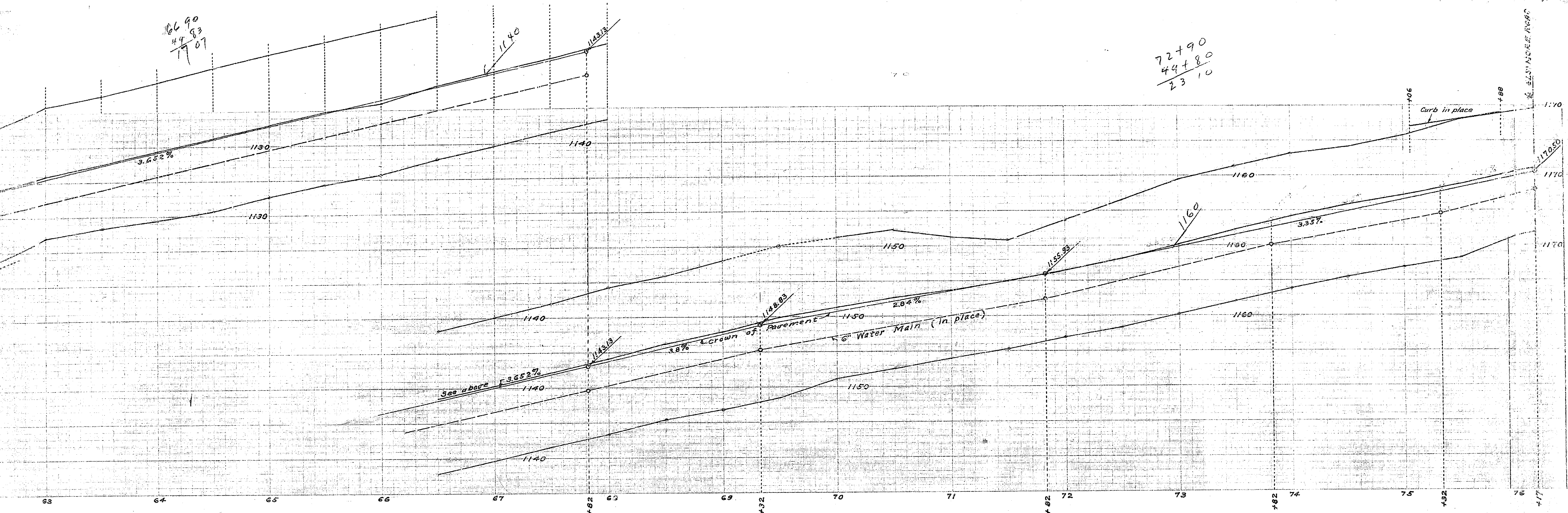
BRADLEY

76717
- 50 + 13.14
26 13.86
7) 52271.20
5,808.6 594.2

PLAN

66 90
49 83
17 07

72+90
44+80
23 10



SCALE HOR. 1" = 40'
VER. 1" = 6'

PLAN

STREET

Curb in place

ELLSWORE ROAD

975

TRAIL 12