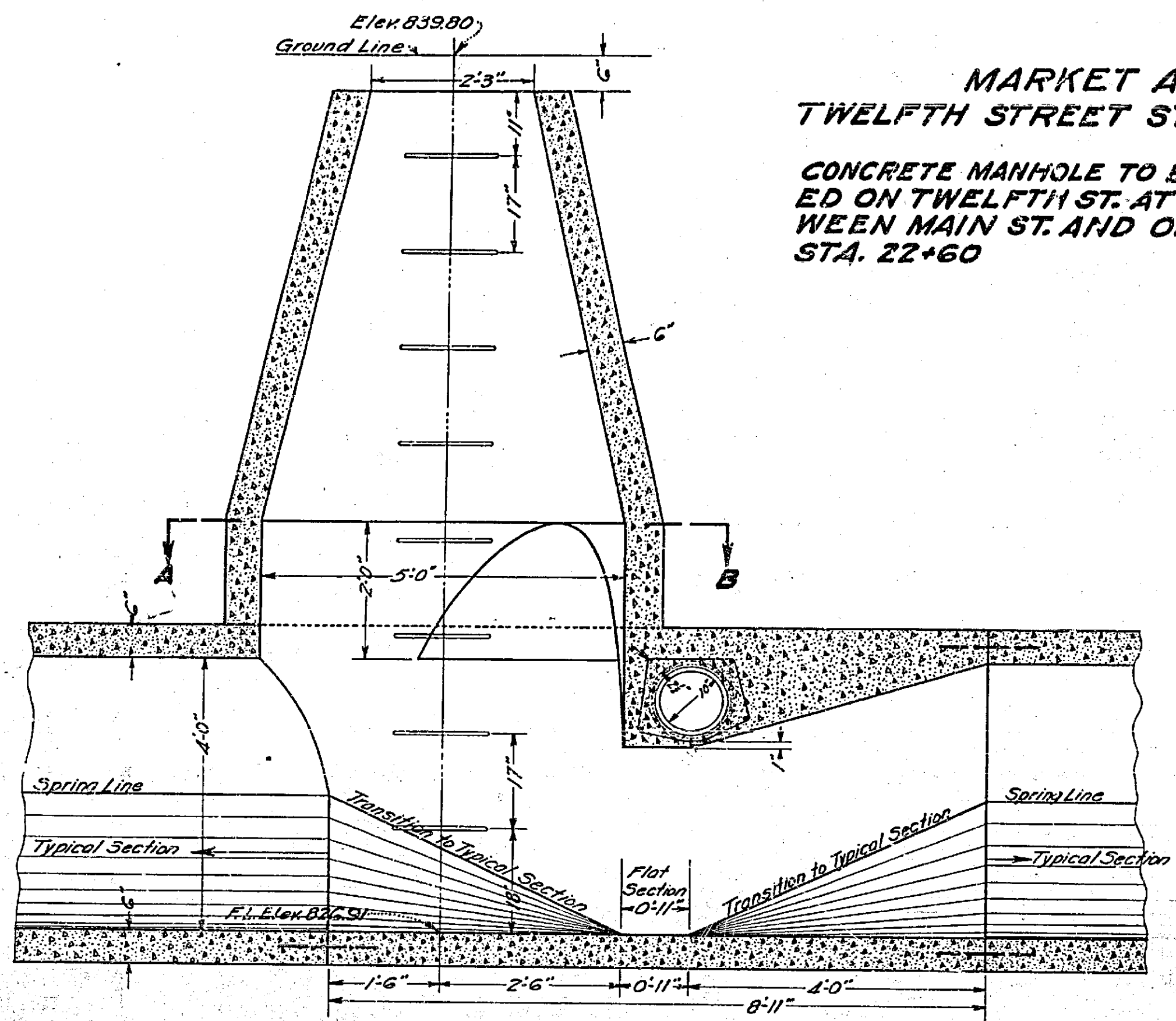
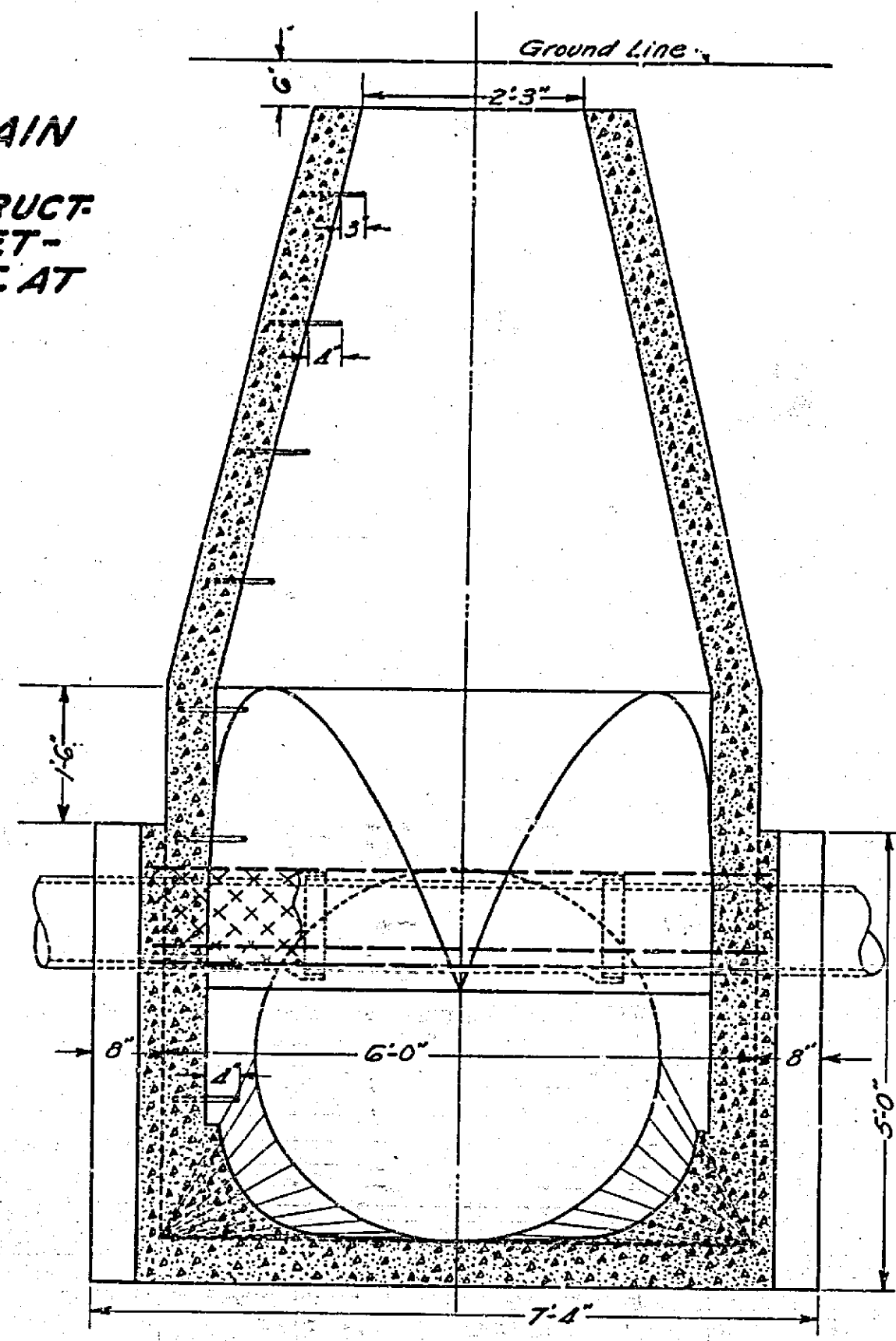


**MARKET AND
TWELFTH STREET STORM DRAIN**

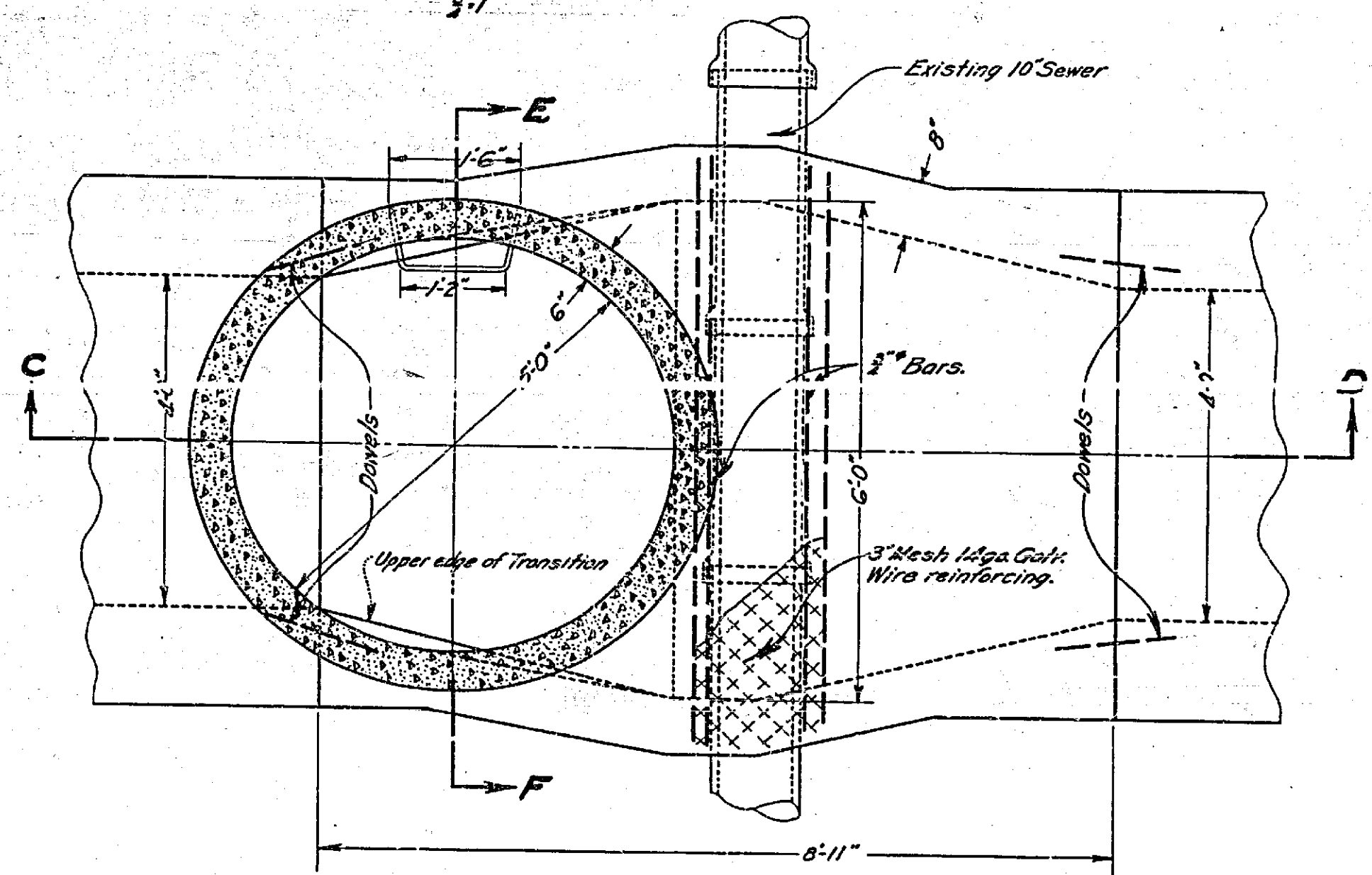
CONCRETE MANHOLE TO BE CONSTRUCTED ON TWELFTH ST. AT ALLEY BETWEEN MAIN ST. AND ORANGE ST. AT STA. 22+60



SECTION C-D
3/4"



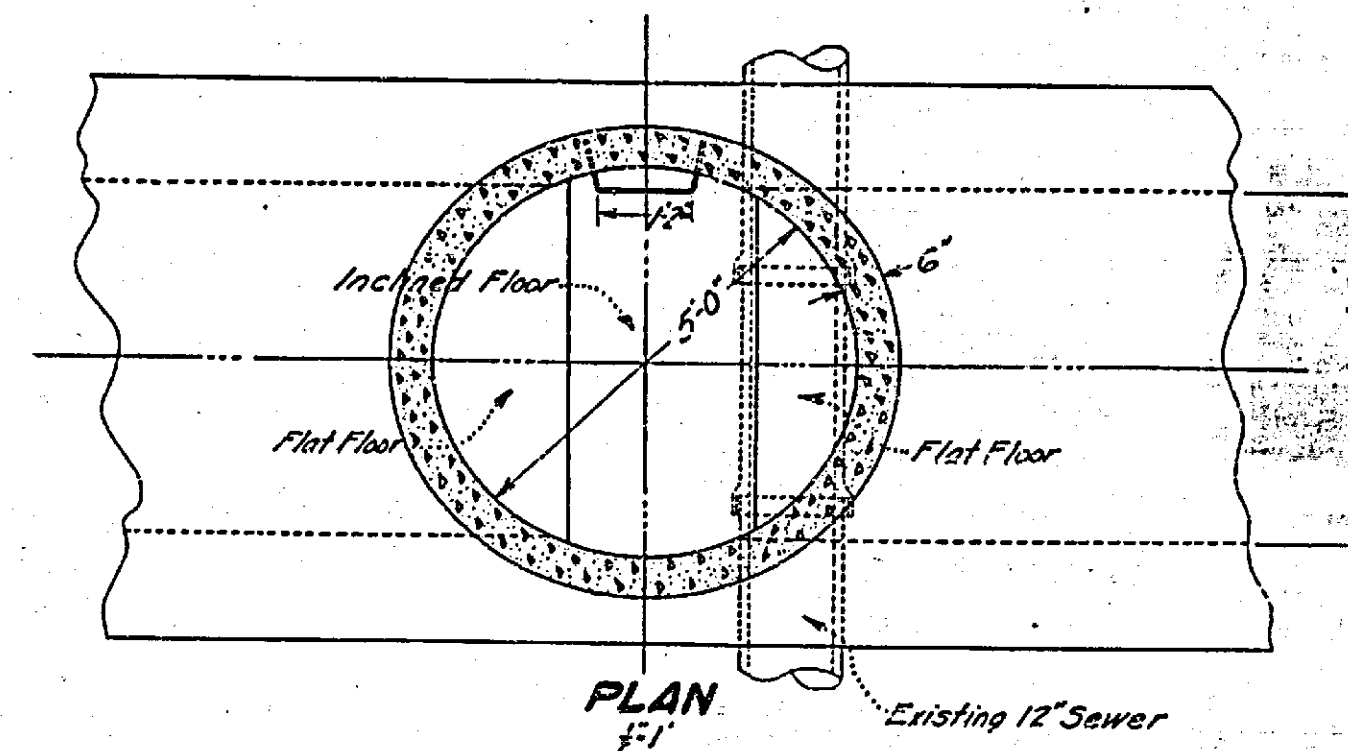
SECTION E-F
3/4"



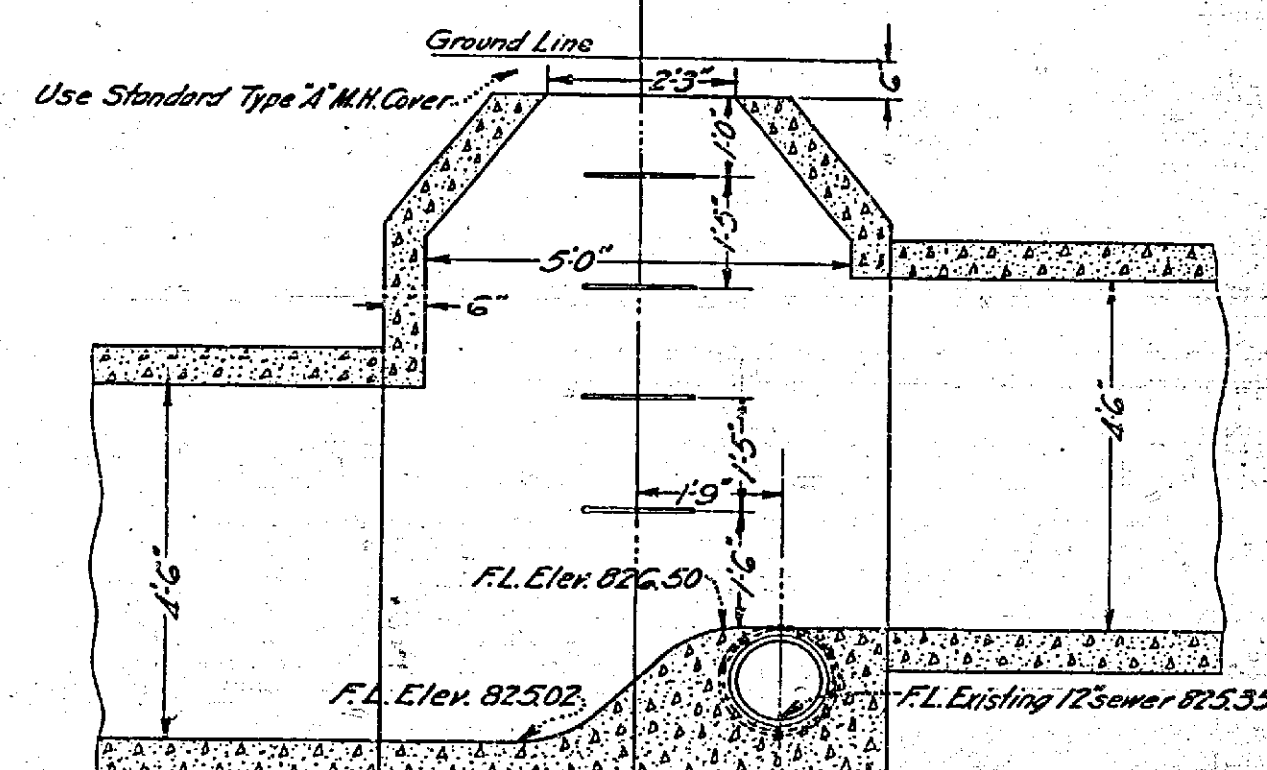
SECTION A-B
3/4"

- NOTES**
1. Use Standard Type A Manhole Frame and Cover.
 2. Manhole Steps shall be 3" Galv. Iron bars, dimensions and spacing as shown.
 3. The existing sanitary sewer shall be inclosed by four 3/4" bars, spaced 24" from center to the outside edge of bell. These bars shall then be inclosed by one layer of 3" Mesh 14 Ga Galv. wire reinforcing, then the sewer and reinforcing enclosed by a concrete slab as shown.
 4. Two quarter sections of the Manhole wall shall be sloped to connect with the inside face of the slab and the top of the existing manhole and two parallel sections as shown.
 5. Invert transitions from half-round to flat section shall be made as shown.
 6. Dowel pins shall be 1/2" bars 16" long, spaced 12" c. to c.

AMOUNT	DESCRIPTION
51 cu yds.	1:2:4 Concrete
23 pcs.	1" Dowels 16" long
4	1" Bars 7' long
5 ft.	3" Mesh 14 ga. Galv. wire reinforcing 7' wide
9 pcs.	3/4" Bars 2'6" long (Manhole Steps)



PLAN
1/2"



ELEVATION OF CONCRETE MANHOLE TO BE CONSTRUCTED AT THIRTEENTH AND MARKET ST. STA. 12+19.95.

AMOUNT	DESCRIPTION
2 cu yds.	1:2:4 Concrete
4 pcs.	1" Bars 2'6" long (M.H. Steps)

DRAWING NO.	SHEET NO.	TOTAL SHEETS	FIELD BOOK
977	2	2	319 322
PLATTED	CHECKED	APPROVED	

9770