

MAIN ST. 1ST ST. & 14TH ST.	
Drawing No. 978	Sheet 115 Total Sheets 116
Platted	Checked
MEM. 12-18-35	

PLANS AND PROFILES

OF THE PROPOSED IMPROVEMENT OF

MAIN STREET

BETWEEN FIRST ST. & FOURTEENTH ST.

ENG. DEPT. RIVERSIDE CALIF. 1935

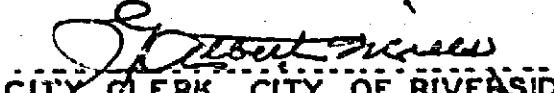
CITY (U. S. G. S.) DATUM PLANE

FIELD BOOK 312 PAGES 1-79

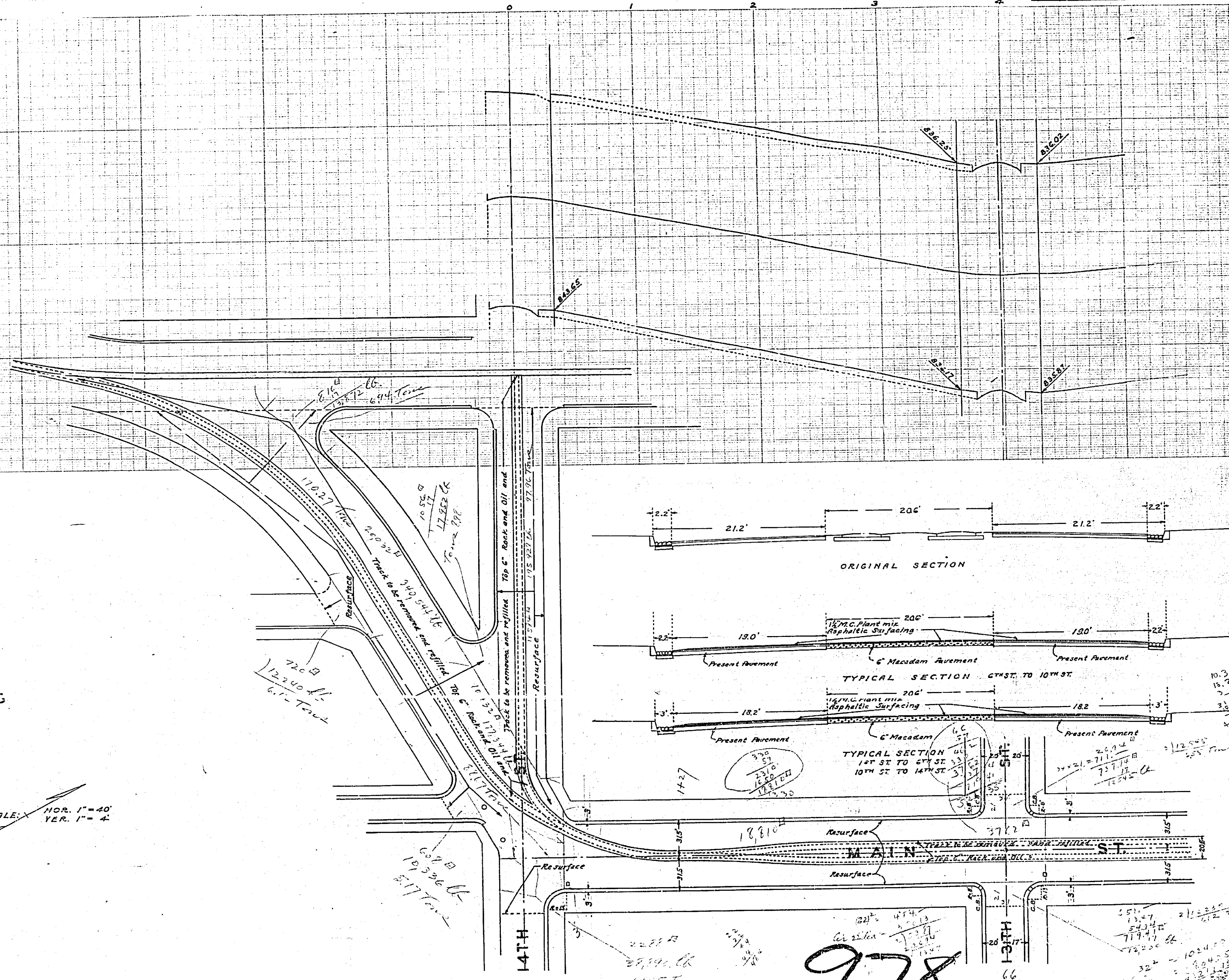
" " 314 " 1-20

APPROVED  CITY ENGINEER

APPROVED AND ADOPTED BY THE MAYOR AND COUNCIL OF THE CITY OF RIVERSIDE THIS 24TH DAY OF DEC. 1935.

 CITY CLERK, CITY OF RIVERSIDE.

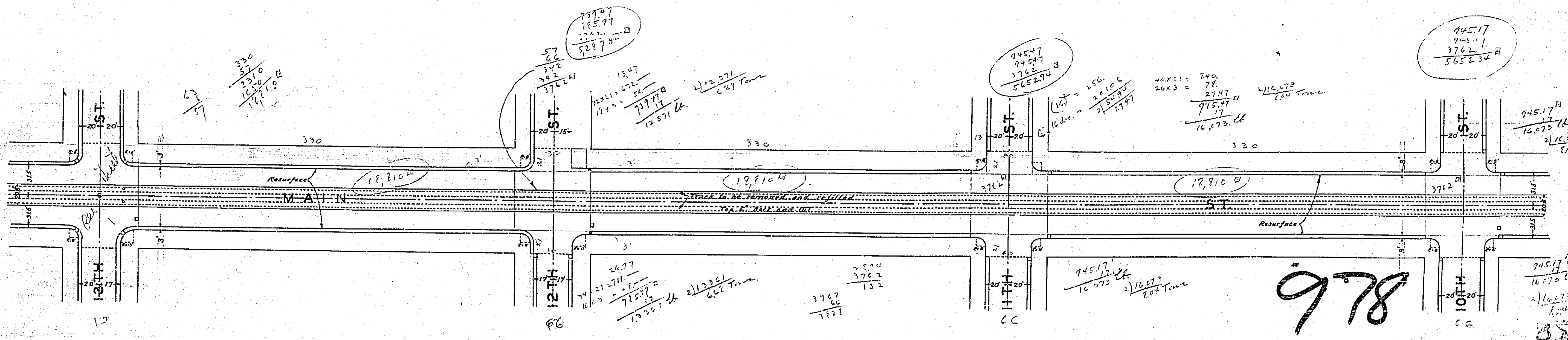
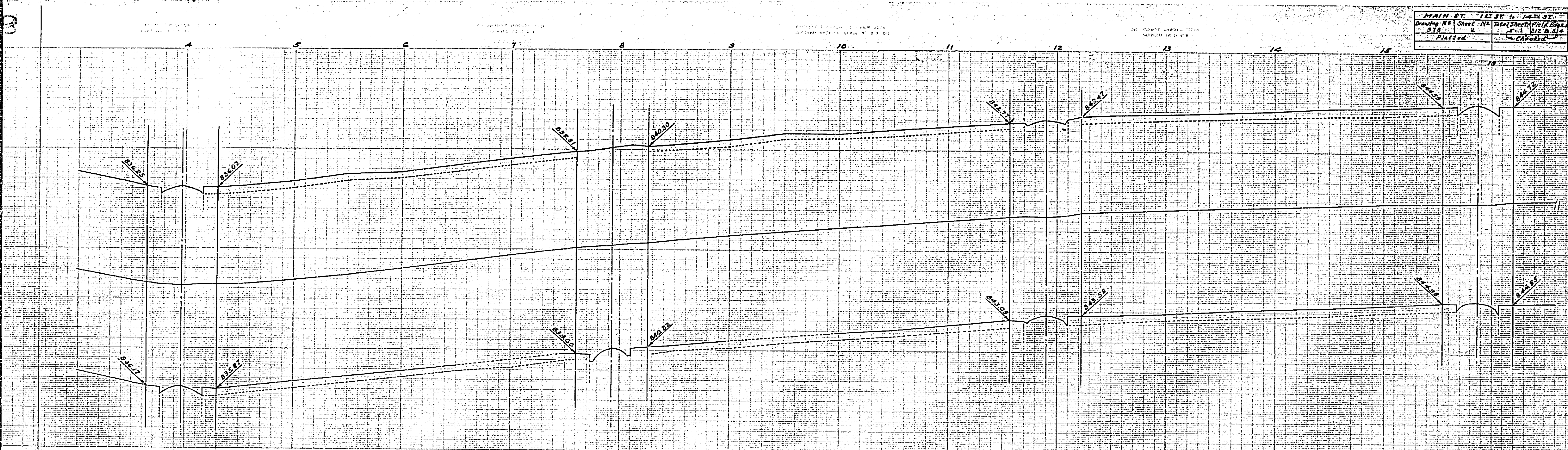
SCALE: HOR. 1" = 40'
VER. 1" = 4'



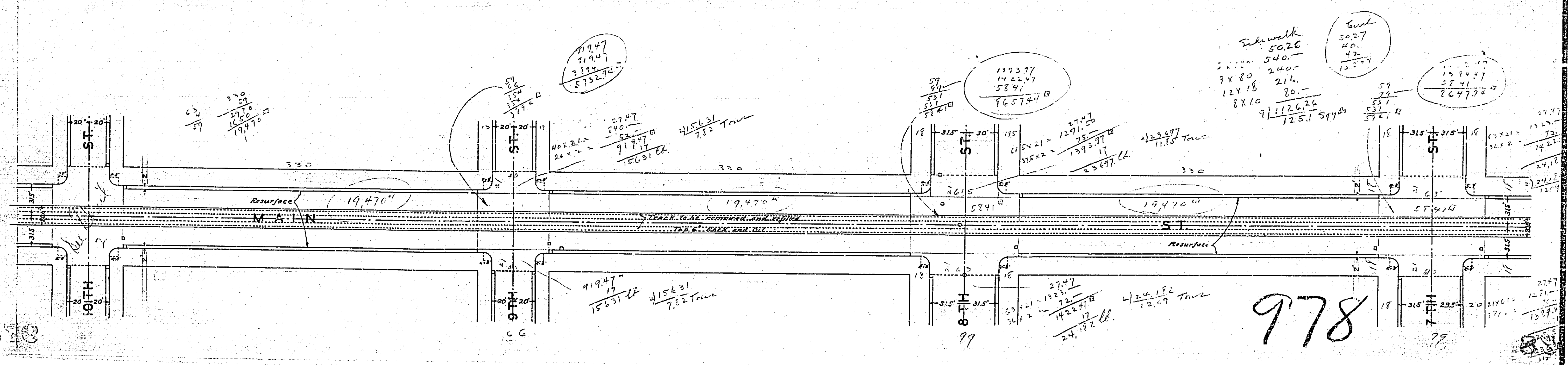
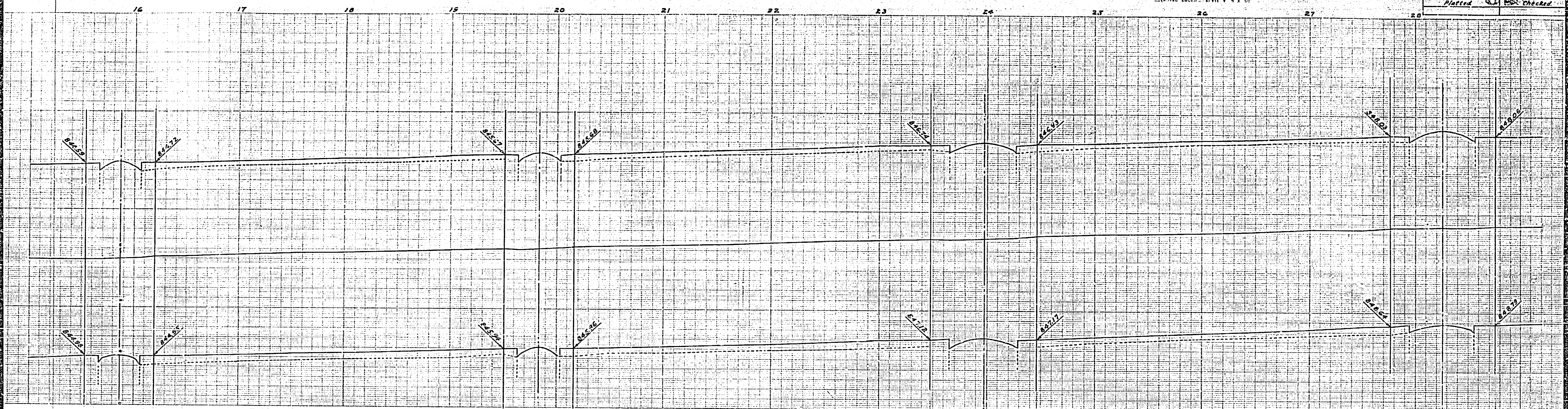
876

978

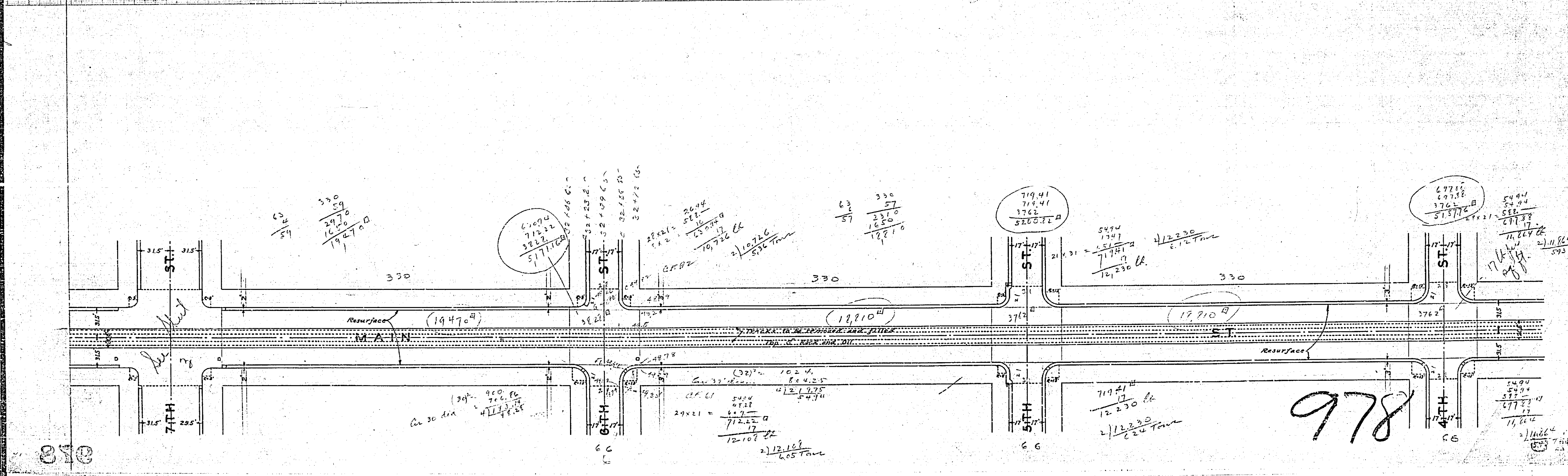
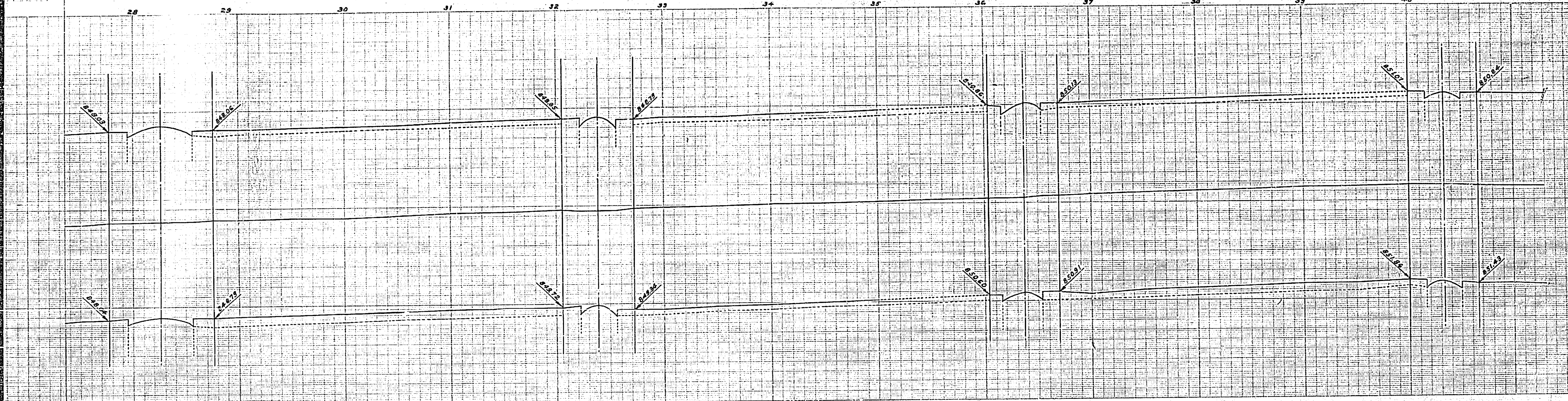
MAIN ST. LET BY L. J. MARIOT	
Drawing No. 978	Sheet No. 2
Placed	Checked

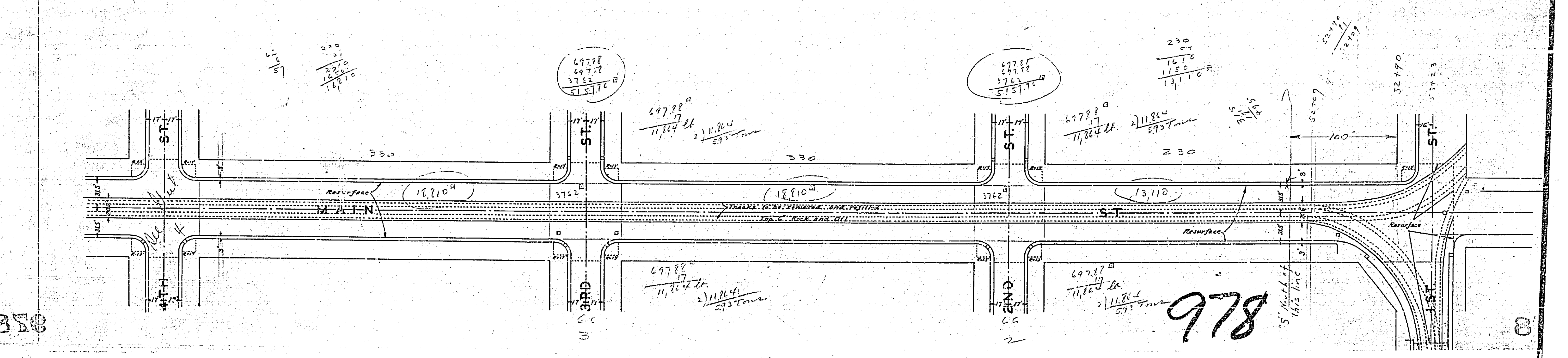
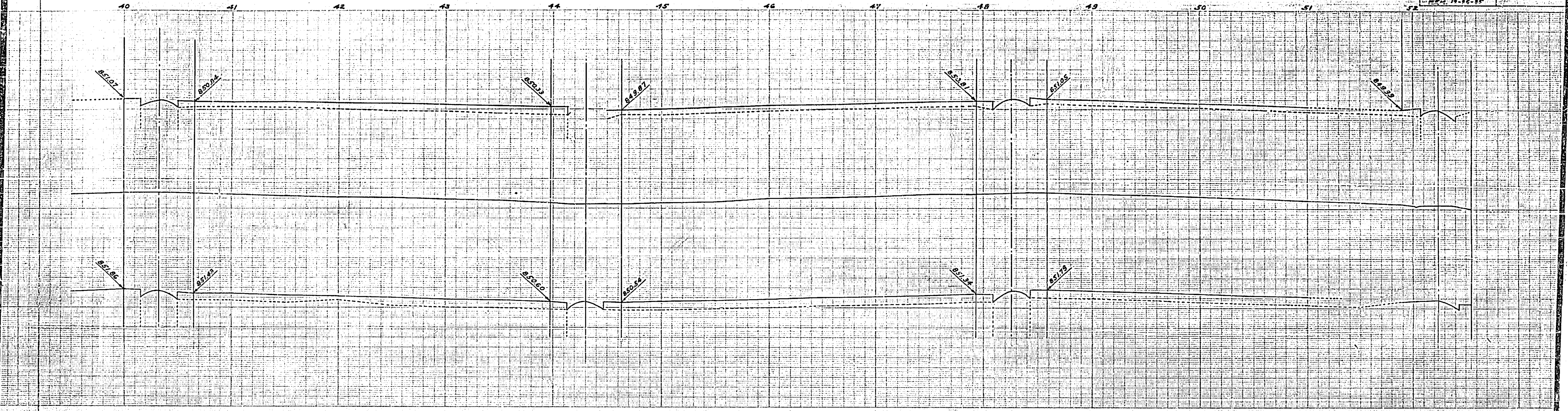


978



978





0148

00