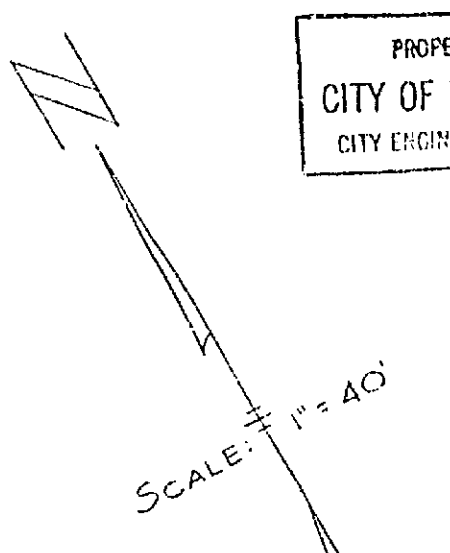
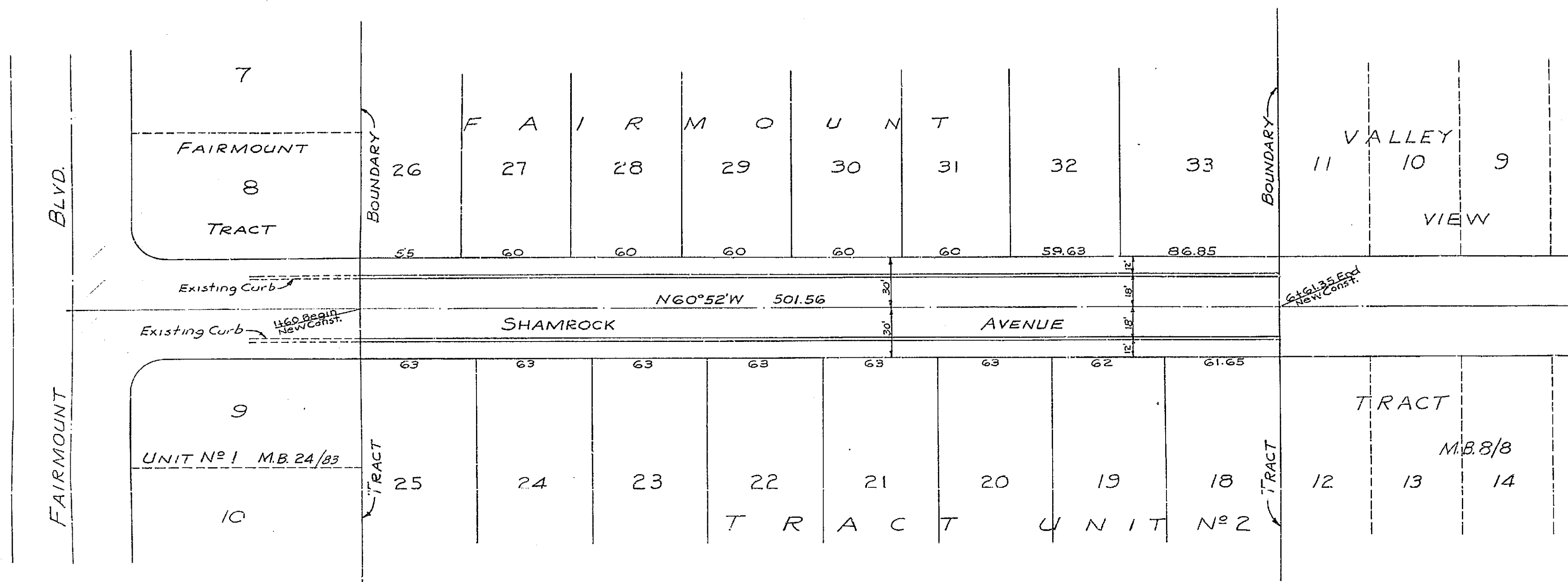


984-B
STREET PLAN AND PROFILE
OF
SHAMROCK AVENUE
IN
FAIRMOUNT TRACT UNIT N^o 2



PROPERTY OF
CITY OF RIVERSIDE
CITY ENGINEERING DEPT.



PROPERTY OF
CITY OF RIVERSIDE
CITY ENGINEERING DEPT.
BY
ALBERT A. WEBB
CIVIL ENGINEER
FEB 1952

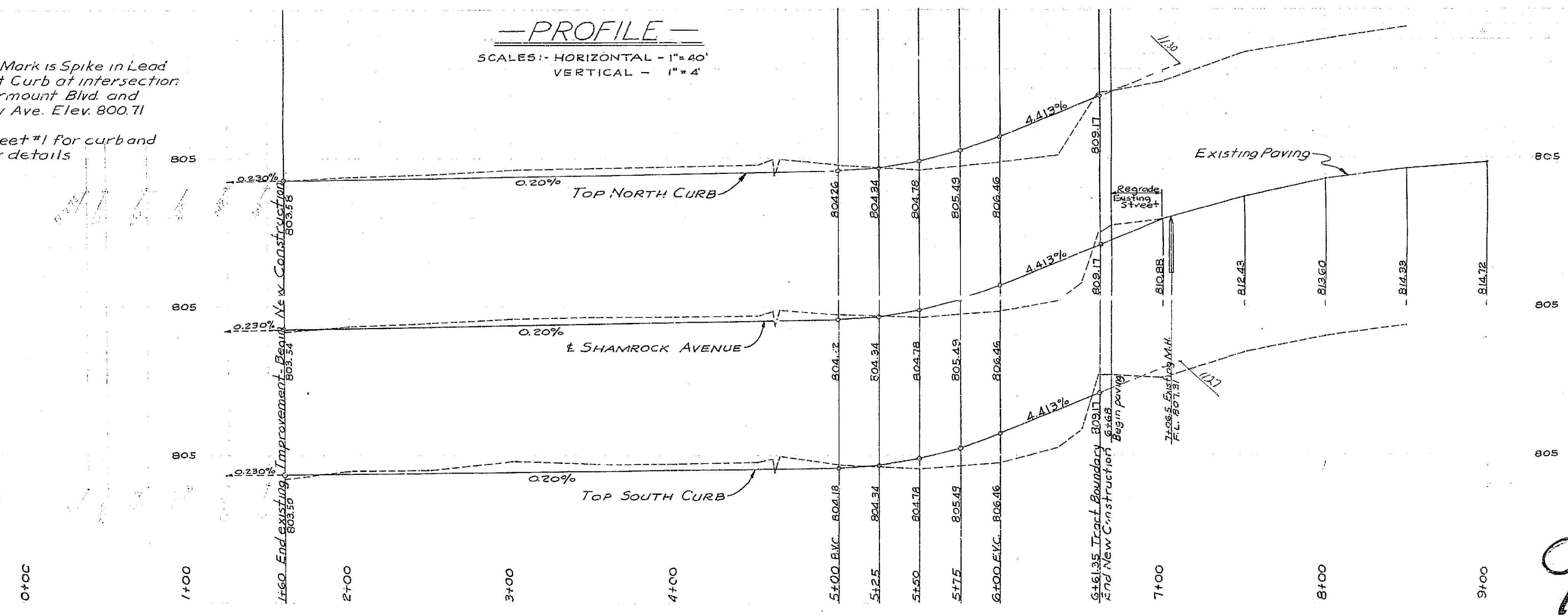
APPROVED *M. H. Irvine*
CITY ENGINEER

-PLAN-

NOTE :- Bench Mark is Spike in Lead
in West Curb at Intersection
of Fairmount Blvd. and
Oakley Ave. Elev. 800.71
See sheet #1 for curb and
gutter details

-PROFILE-

SCALES: - HORIZONTAL - 1" = 40'
VERTICAL - 1" = 4'



PROPERTY OF
CITY OF RIVERSIDE
CITY ENGINEERING DEPT.

PROPERTY OF
CITY OF RIVERSIDE
CITY ENGINEERING DEPT.

984 B
N.O. 2-1
FEB 1952

N° 984-B

STREET PLAN AND PROFILE
OF
STODDARD AVENUE
IN
FAIRMOUNT TRACT UNIT N° 2

PROPERTY OF
CITY OF RIVERSIDE
CITY ENGINEERING DEPT.

BY
ALBERT A. WEBB
CIVIL ENGINEER
Feb 1952

APPROVED *M. L. Irvine*
CITY ENGINEER

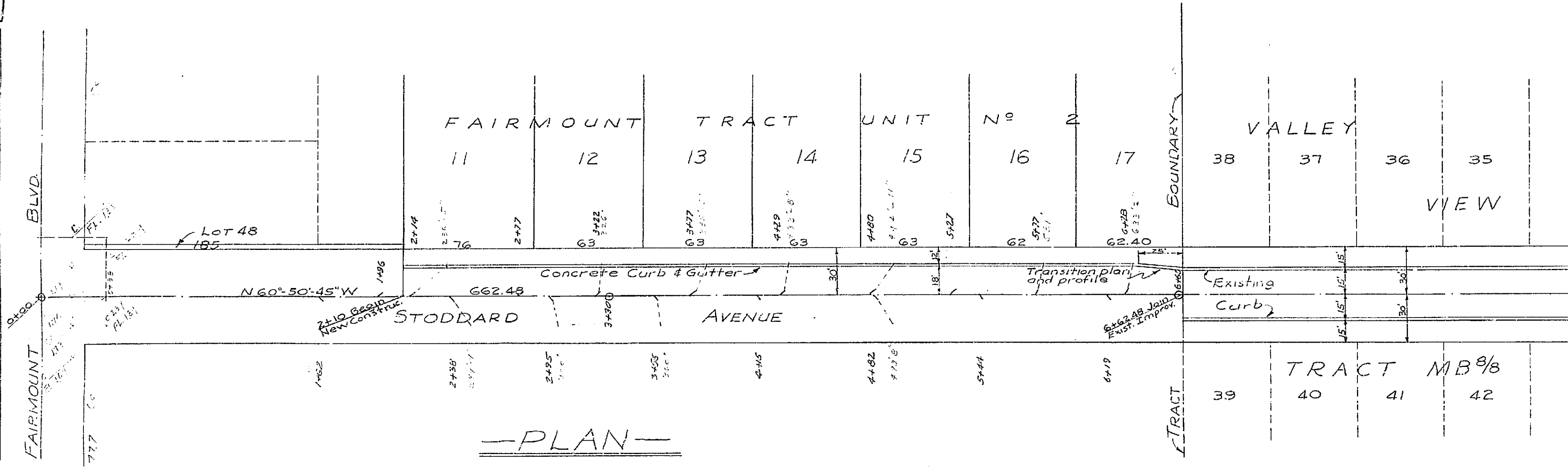
NOTE:- Bench Mark is Spike in
Lead in West Curb at
intersection of Fairmount
Blvd. and Oakley Ave.
Elev. 800.71

See sheet #1 for curb
and gutter details

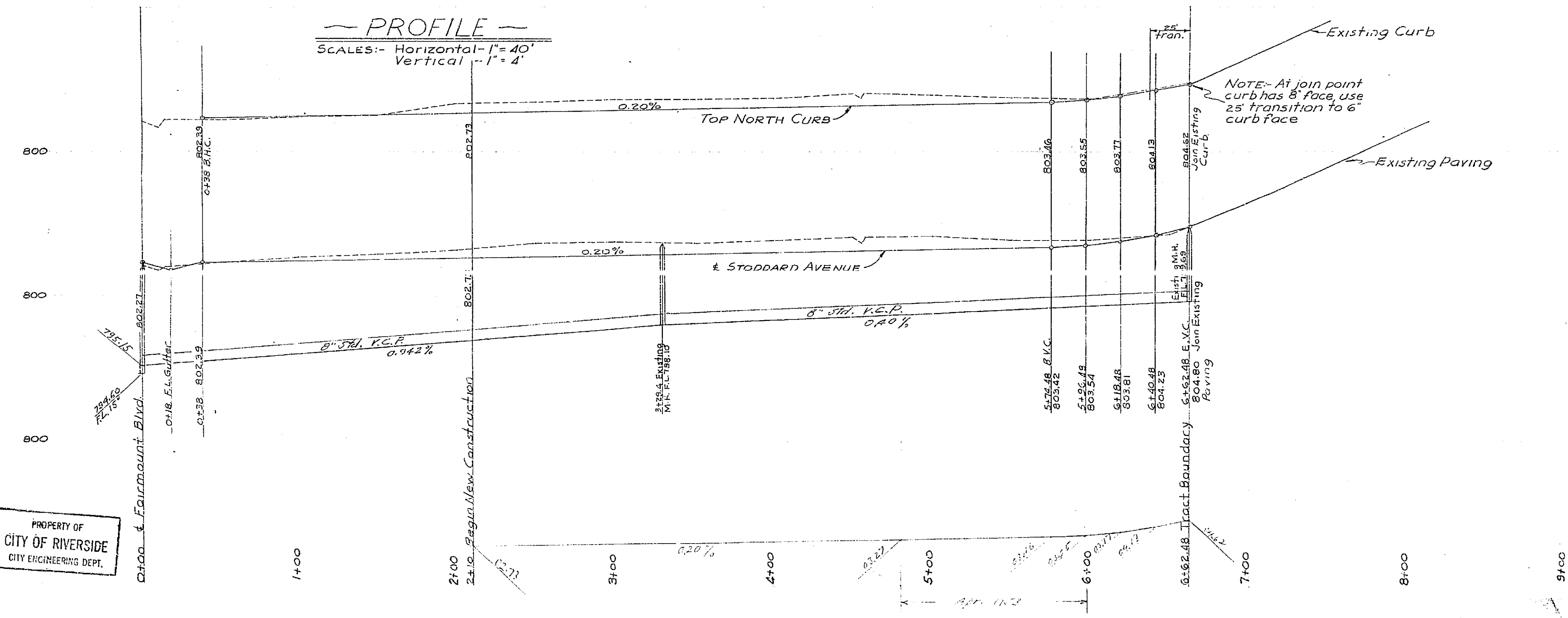
N.O. 52-1
F.S. 187

PROPERTY OF
CITY OF RIVERSIDE
CITY ENGINEERING DEPT.

SCALE: $1" = 40'$



PLAN



PROFILE
SCALES:- Horizontal - 1" = 40'
Vertical - 1" = 4'

PROPERTY OF
CITY OF RIVERSIDE
CITY ENGINEERING DEPT.

984B

PROPERTY OF
CITY OF RIVERSIDE
CITY ENGINEERING DEPT.