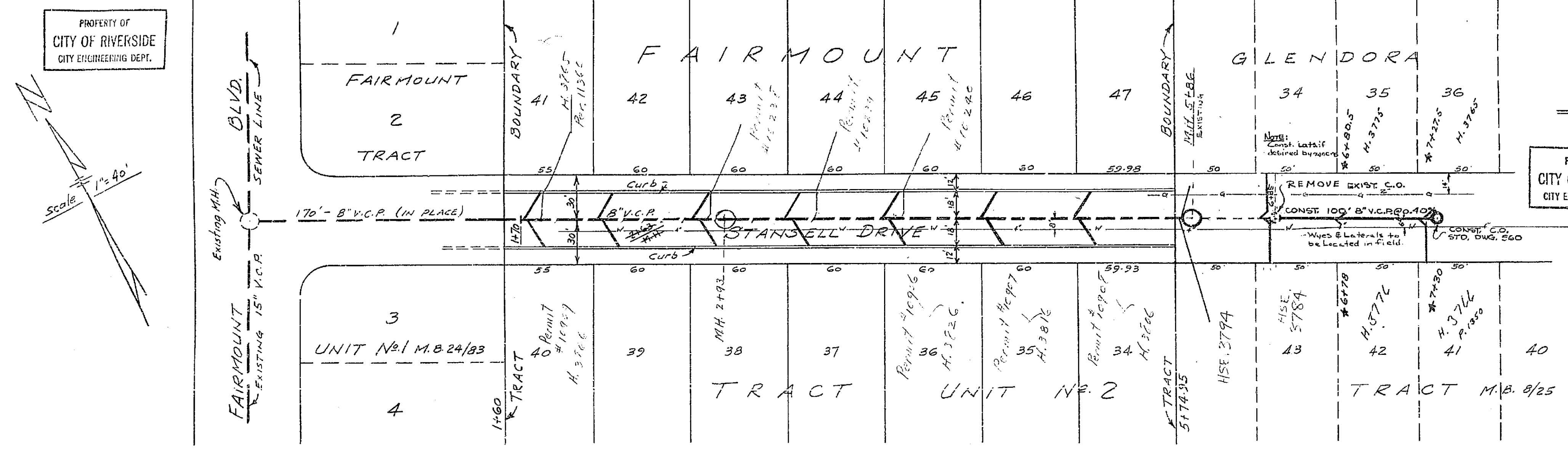


No 984-C  
SEWER PLANS

OF  
STANSELL DRIVE  
IN  
FAIRMOUNT TRACT UNIT No 2



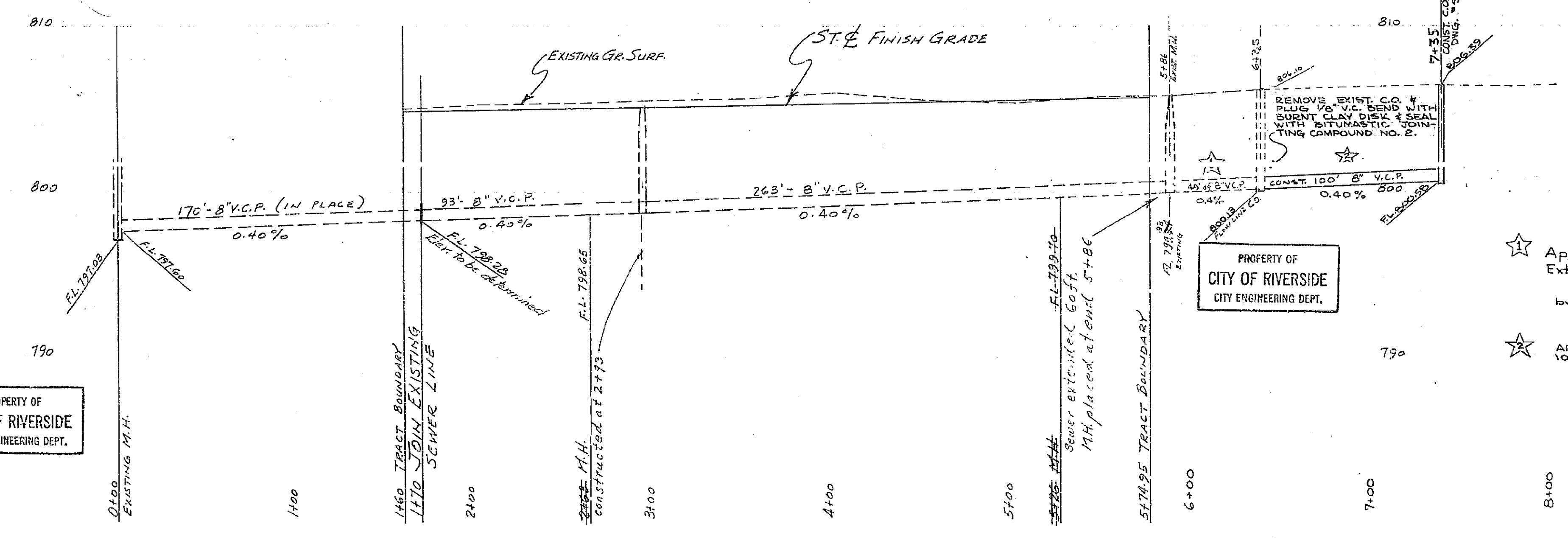
PROPERTY OF  
CITY OF RIVERSIDE  
CITY ENGINEERING DEPT.

BY  
ALBERT A. WEBB  
CIVIL ENGINEER  
MARCH - 1952

APPROVED *M. H. Durine*  
CITY ENGINEER

-PLAN-

-PROFILE-



PROPERTY OF  
CITY OF RIVERSIDE  
CITY ENGINEERING DEPT.

PROPERTY OF  
CITY OF RIVERSIDE  
CITY ENGINEERING DEPT.

QUANTITY ESTIMATE (THIS SHEET)

- 356' - 8" V.C.P.
- 2 - Std. Manholes
- 14 - 8"x4" Y Branches
- 250' - 4" V.C.P.

NOTES :- 0 Bench Mark is Spike in Lead  
in West Curb at intersection  
of Fairmount Blvd. and  
Oakley Ave. ELEV. 800.71'  
① "Y" Branches and House Laterals  
to be located in field  
F.B. REF. 667/49

☆ Approved for Construction of 49'  
Extension and Cleanout  
by *M. H. Durine* Date *Sept 2, 1959*  
Dir. of Pub. Wks. Z.D.Y.  
☆ APPROVED FOR CONSTRUCTION OF  
100' EXTENSION & CLEANOUT  
BY *M. H. Durine* DATE *1/1/62*  
Dir. of Pub. Wks. *W. G. O'Rourke*  
\* = As built 9/4/62 RK

984C

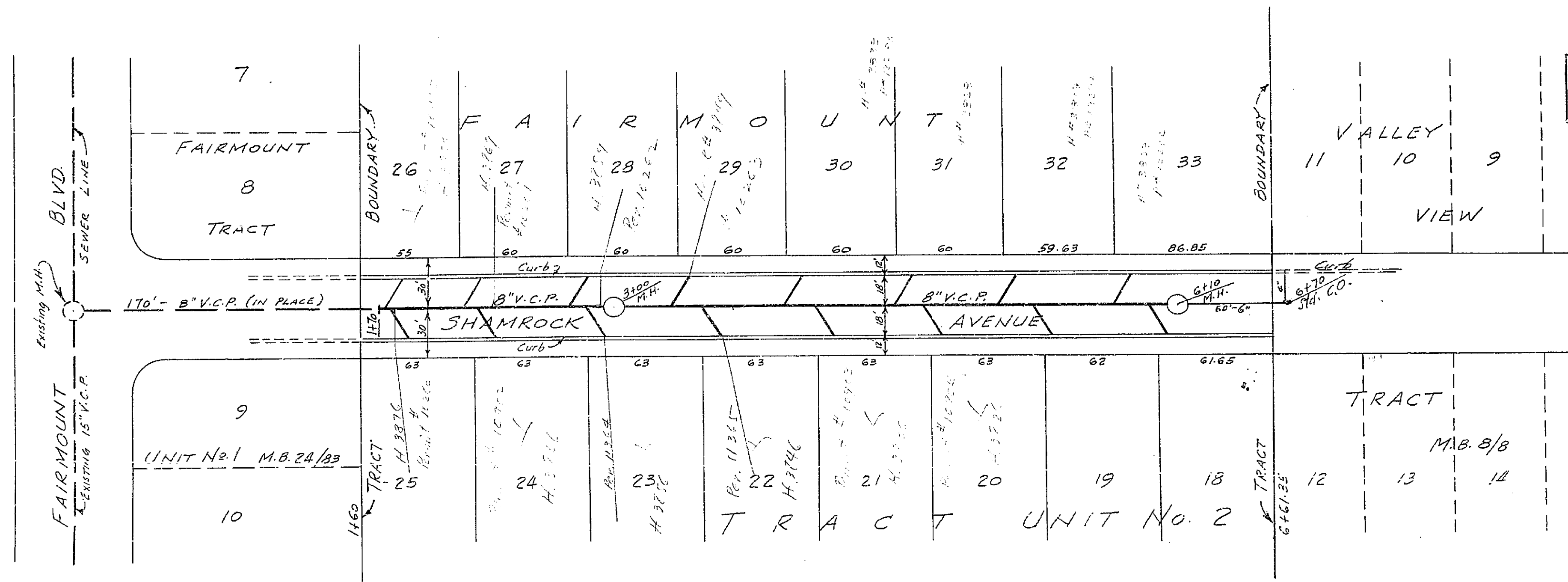
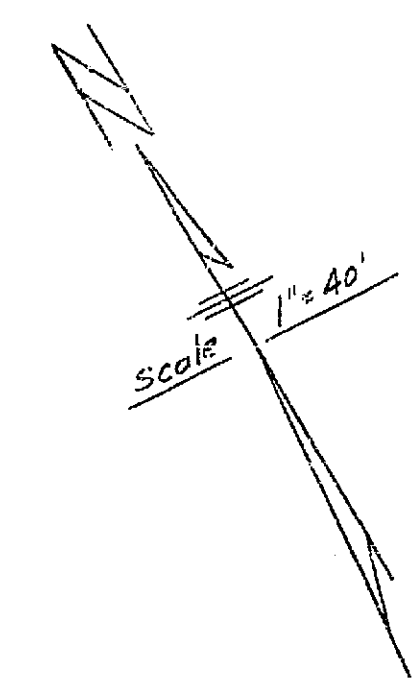
No. 984-C  
SEWER PLANS

OF  
SHAMROCK AVENUE  
IN  
FAIRMOUNT TRACT UNIT No. 2

BY  
ALBERT A. WEBB  
CIVIL ENGINEER  
MARCH - 1952

APPROVED M.H. Quinn  
CITY ENGINEER

PROPERTY OF  
CITY OF RIVERSIDE  
CITY ENGINEERING DEPT.



— PLAN —

— PROFILE —  
SCALES: HORIZONTAL - 1" = 40'  
VERTICAL - 1" = 4'

QUANTITY ESTIMATE (THIS SHEET)

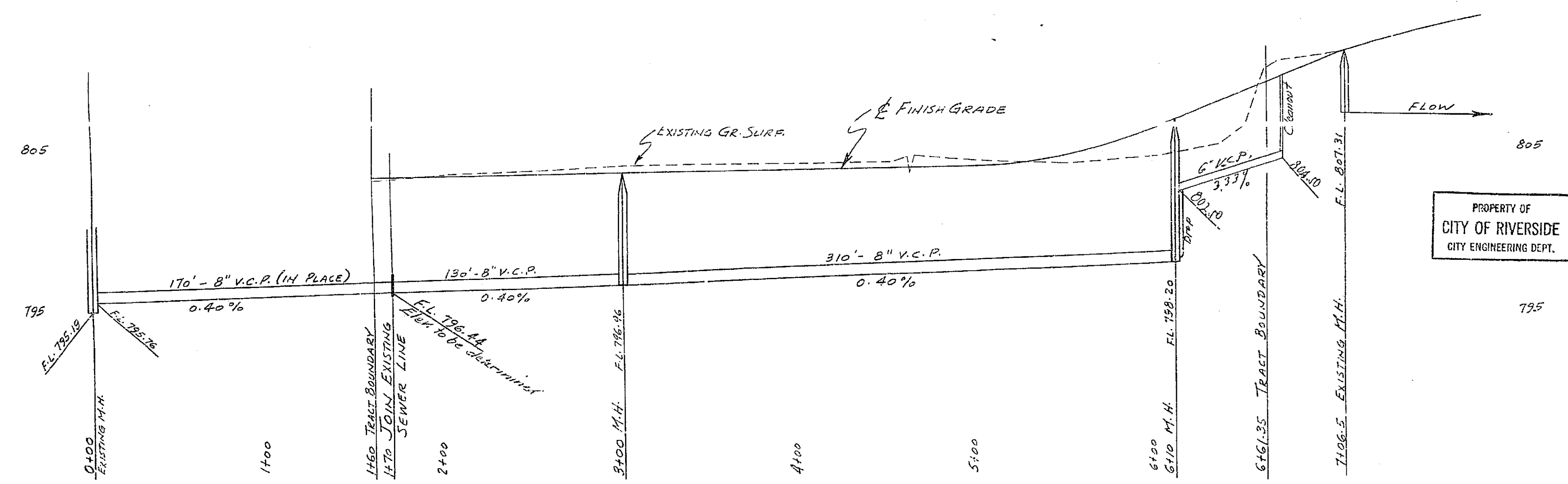
- 440' - 8" V.C.P.
- 2 - Std. Manholes
- 16 - 8"x4" Y Branches
- 290' - 4" V.C.P.

Note: 4" Extension and lateral to Curb authorized by City at its expense. Council action: 5-22-56 L.S.W.

List of Excavation Quantities:  
60' 6" V.C.P.  
12' - 4" "  
1 - Dug only  
1 - Std. Cleanout complete

NOTE: - Bench Mark is Spike in Lead in West Curb at intersection of Fairmount Blvd. and Oakley Ave. ELEV. = 800.71'

© "Y" Branches and House Laterals to be located in field



PROPERTY OF  
CITY OF RIVERSIDE  
CITY ENGINEERING DEPT.

PROPERTY OF  
CITY OF RIVERSIDE  
CITY ENGINEERING DEPT.

984C