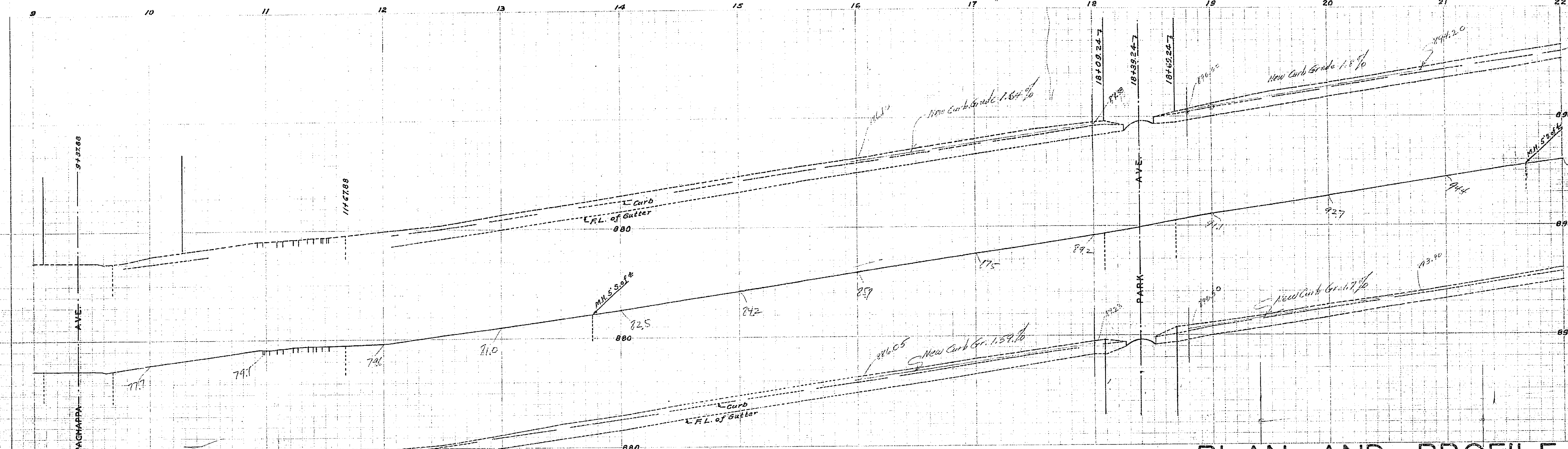


EIGHTH STREET			
PACHAPPA AVE. TO KANSAS AVE.			
Imaging No.	Sheet	Field Book	250
987	1	3	
Platted		Checked	
D.M. 12-2-36		H. Loucks 12/4/36	



PLAN AND PROFILE

OF THE PROPOSED IMPROVEMENT ON

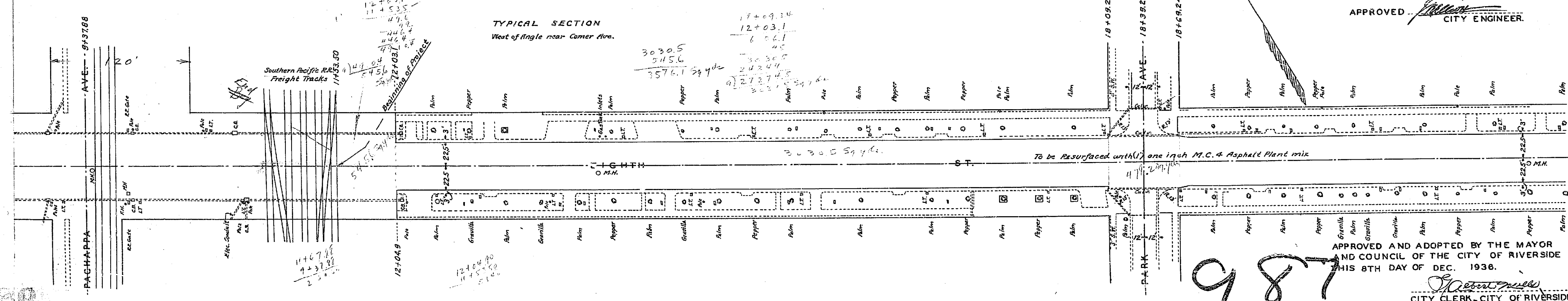
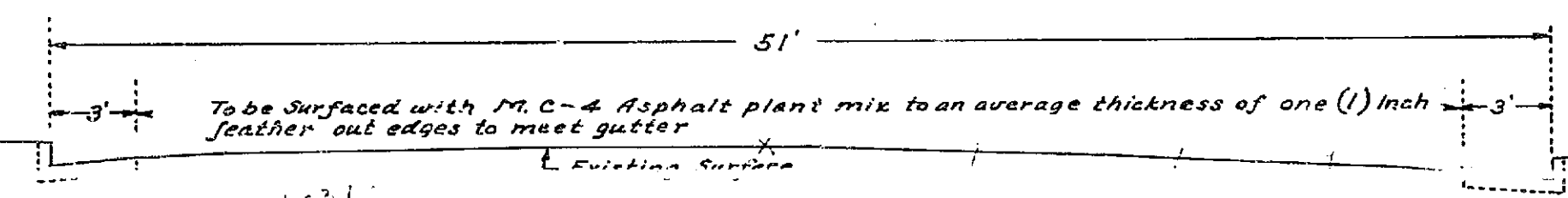
EIGHTH STREET

BETWEEN PACHAPPA AVE. & KANSAS AVE.

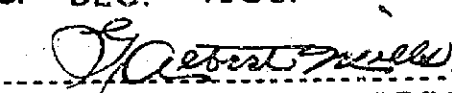
ENGINEER DEPT. RIVERSIDE CALIF. 1935.
 CITY (U.S.G.S.) DATUM PLANE
 FIELD BOOK 250 PAGES 6-75

SCALE HQR. 1" = 40'
 VER. 1" = 4'

APPROVED  CITY ENGINEER.

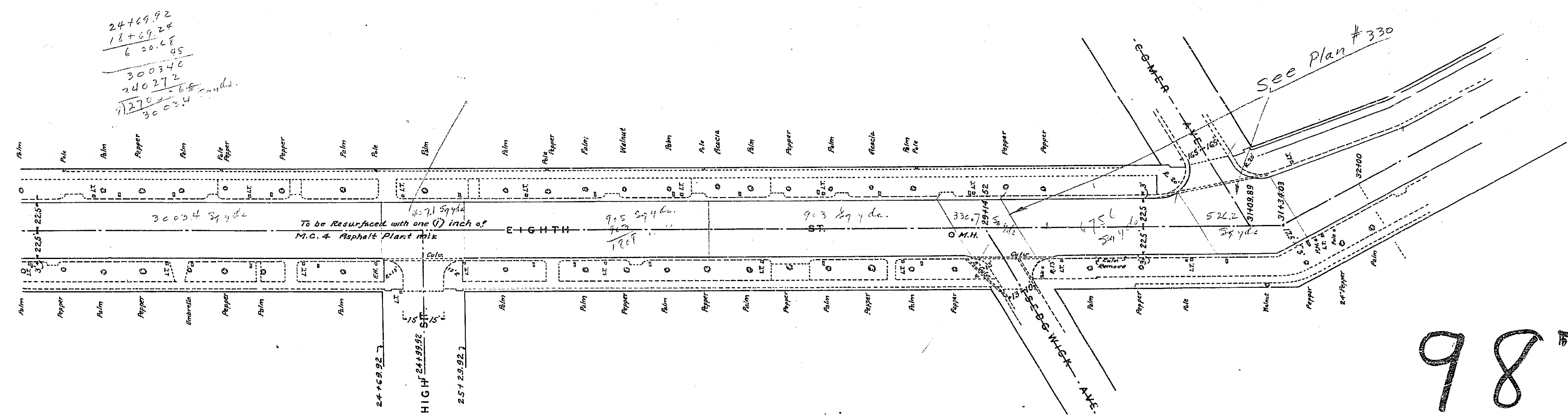
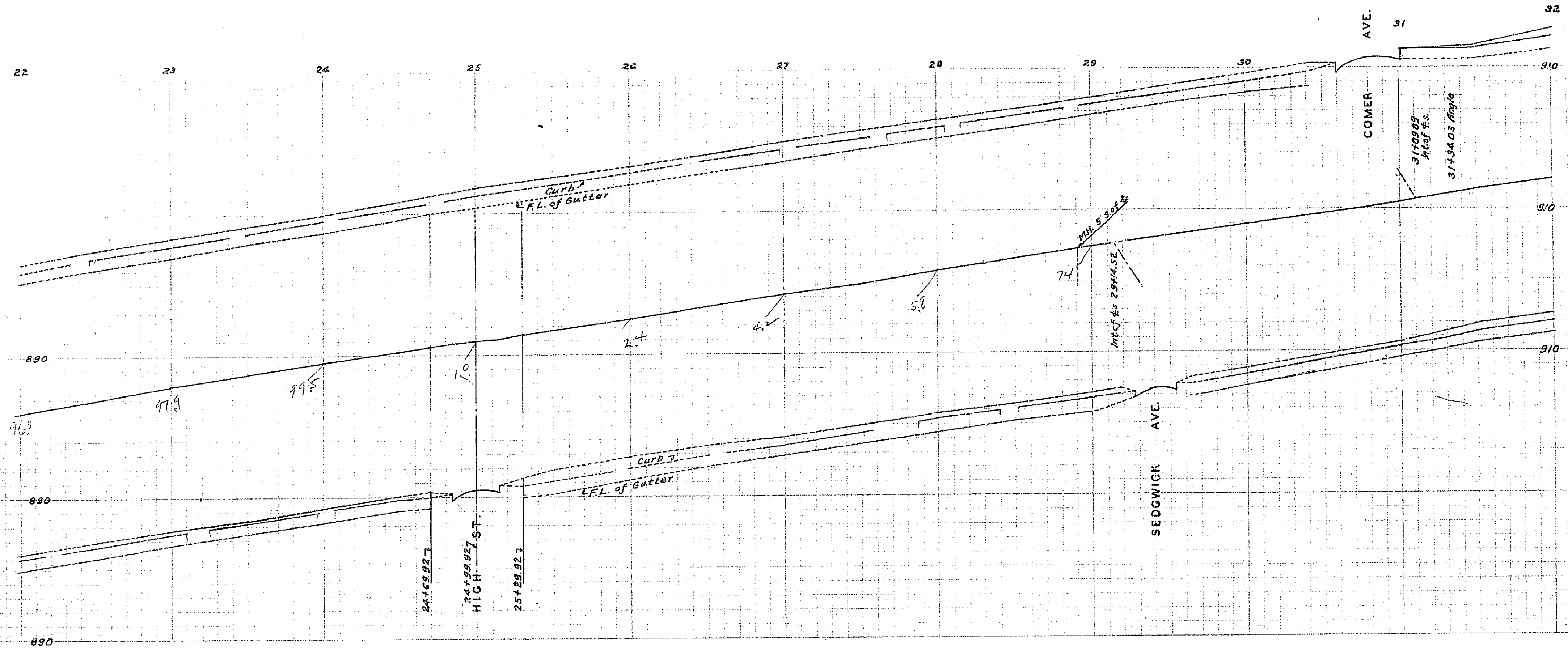


APPROVED AND ADOPTED BY THE MAYOR AND COUNCIL OF THE CITY OF RIVERSIDE THIS 8TH DAY OF DEC. 1936.

 CITY CLERK - CITY OF RIVERSIDE.

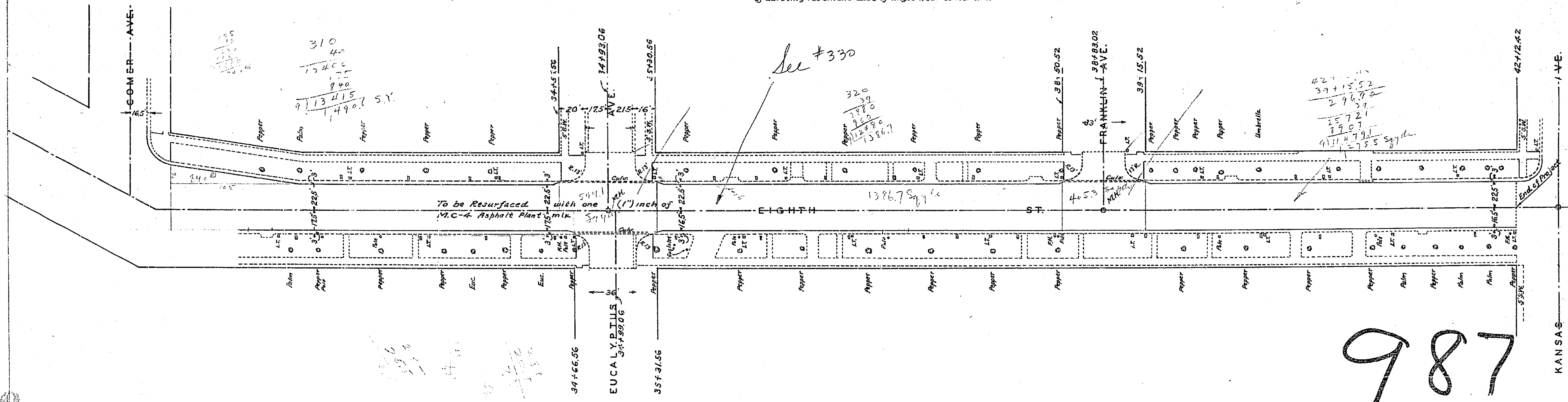
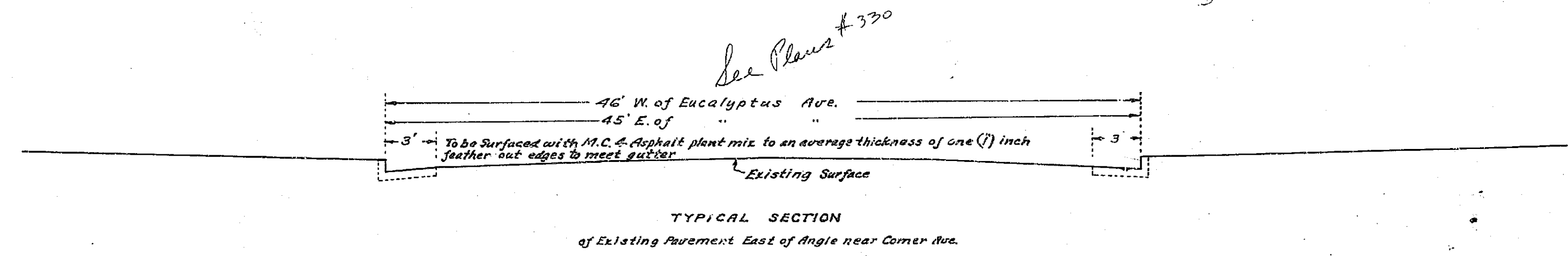
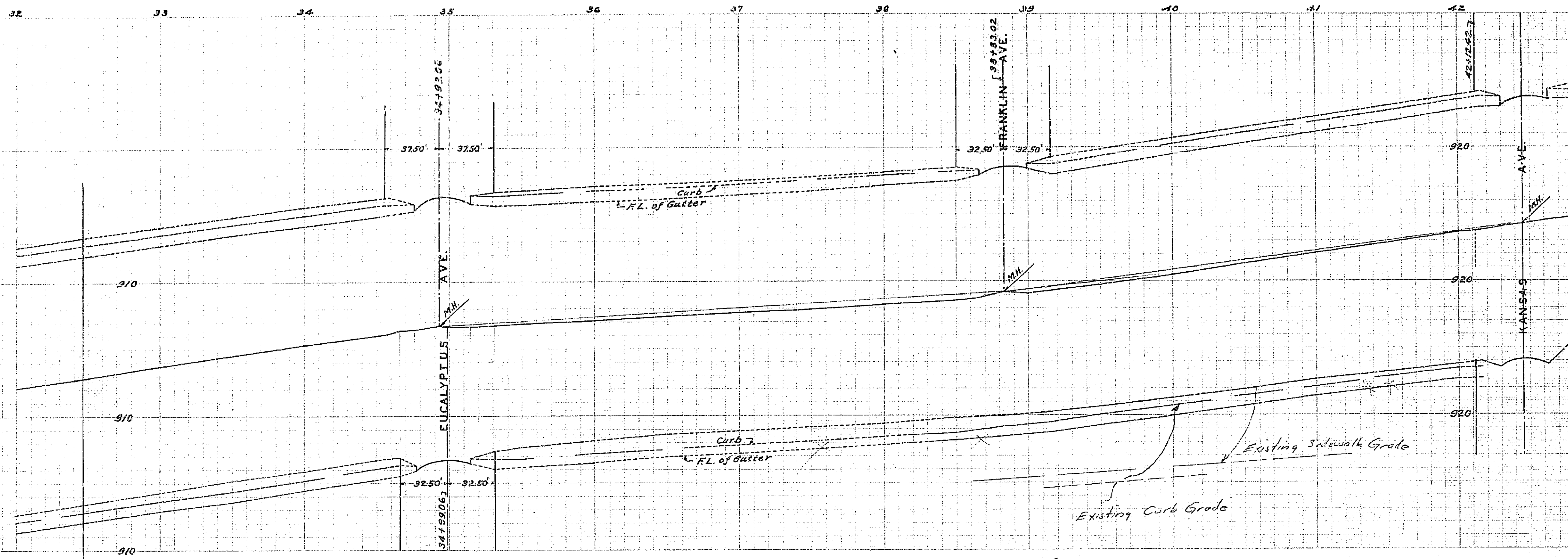
987

EIGHTH STREET		
ARCHARD AVE TO MAIN ST AVE		
Drawing No.	Sheet No.	Field Book
987	2	250
Platted	Checked	
G. E. M., 12-2-26	W. L. L., 12-7-26	



24+69.92
 18+69.24
 6 30.68
 300340
 240272
 1270
 30034

987



$42+12.42$
 $42+12.42$
 $38+83.02$
 $34+93.00$
 389.00
 $39+73$
 $31+34$
 5