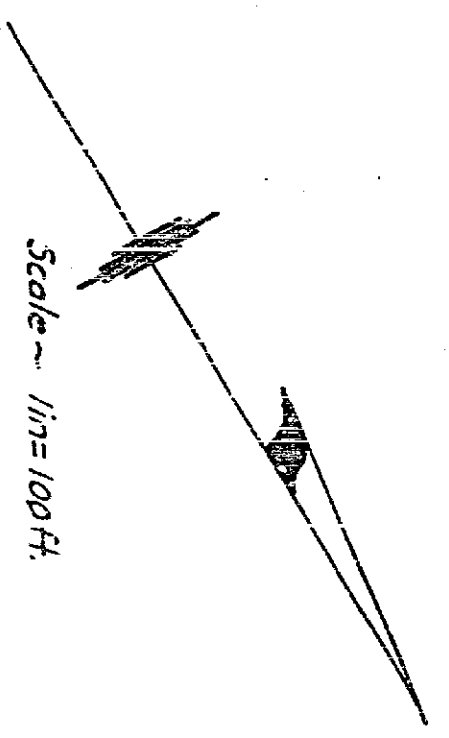
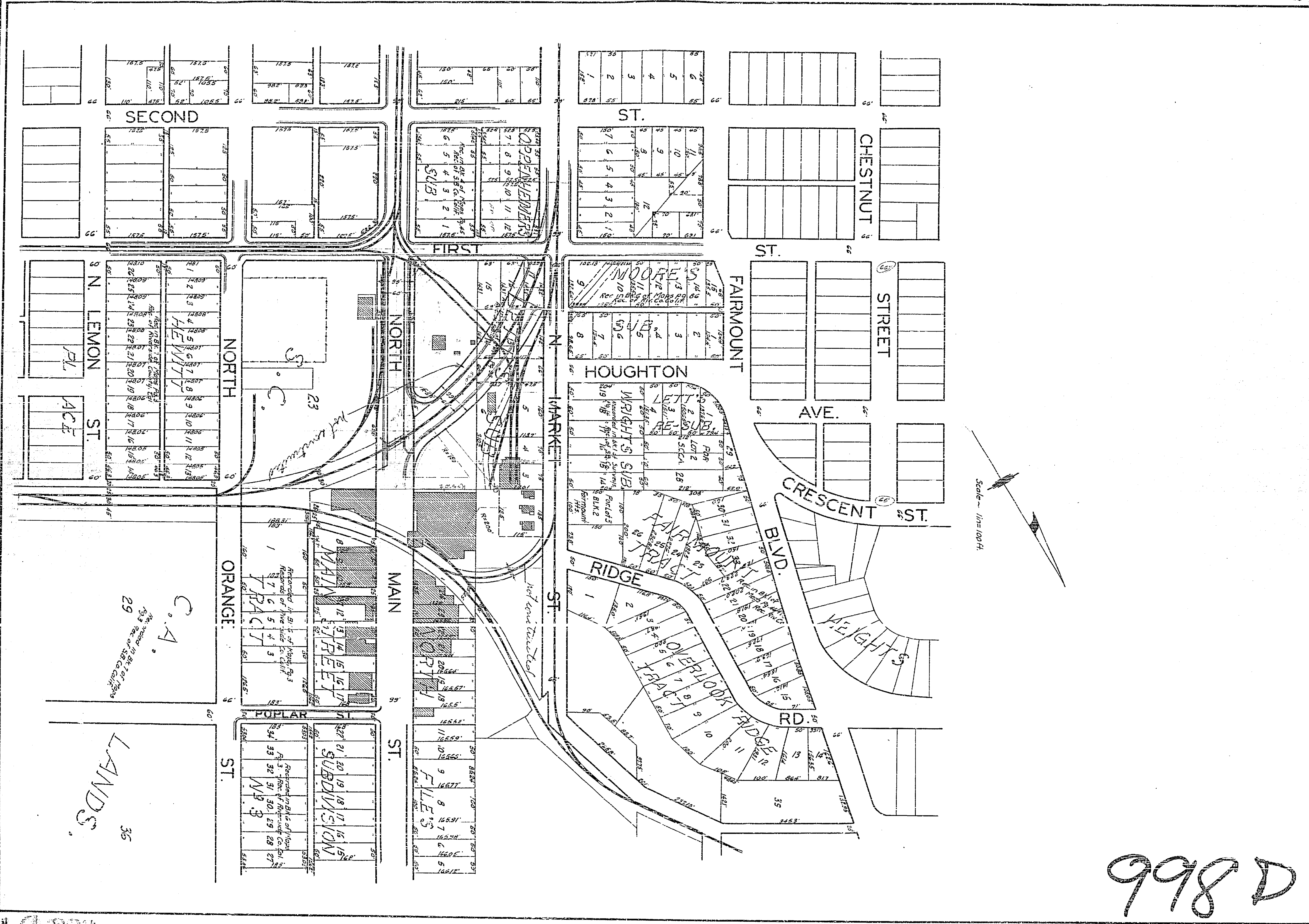




MAP OF A PORTION OF THE CITY OF RIVERSIDE
 SHOWING
 STREETS AND BUILDINGS IN THE IMMEDIATE VICINITY OF
 NORTH MAIN STREET AND SOUTHERN PACIFIC RAILROAD
 ENGINEERING DEPARTMENT
 CITY OF RIVERSIDE

EXHIBIT 'F'



998 D

LANDS.
36

C.A.
29
Recorded in Bk. 7 of 1893
Pg. 3 Rec. of S.B. Co. Cal.

POPLAR ST.
SUBDIVISION
Recorded in Bk. 6 of 1892
Pg. 3 Rec. of M. & W. Co. Cal.

ORANGE ST.
MAYBERRY
Recorded in Bk. 5 of 1893
Pg. 7 Rec. of M. & W. Co. Cal.

N. LEMON ST.
HEWITT
Recorded in Bk. 7 of 1893
Pg. 2 Rec. of M. & W. Co. Cal.

FIRST ST.
OPEN MEMBERS SUB
Recorded in Bk. 4 of 1892
Pg. 4 Rec. of S.B. Co. Cal.

FAIRMOUNT ST.
MOORE'S SUB
Recorded in Bk. 10 of 1893
Pg. 10 Rec. of S.B. Co. Cal.

HOUGHTON ST.
WEIGHTS SUB
Recorded in Bk. 11 of 1893
Pg. 11 Rec. of S.B. Co. Cal.

RIDGE ST.
OVERLOOKS RIDGE TRACT
Recorded in Bk. 12 of 1893
Pg. 12 Rec. of S.B. Co. Cal.

MARK ST.
WEIGHTS
Recorded in Bk. 13 of 1893
Pg. 13 Rec. of S.B. Co. Cal.

CHESTNUT ST.
WEIGHTS
Recorded in Bk. 14 of 1893
Pg. 14 Rec. of S.B. Co. Cal.

SECOND ST.
WEIGHTS
Recorded in Bk. 15 of 1893
Pg. 15 Rec. of S.B. Co. Cal.