

U
R
S
I
D
E
P
A
V
E
N
U
E

62 65 76 79 90 93 104
63 64 77 78 91 92 105
C
A
L
F
O
R
N
I
A

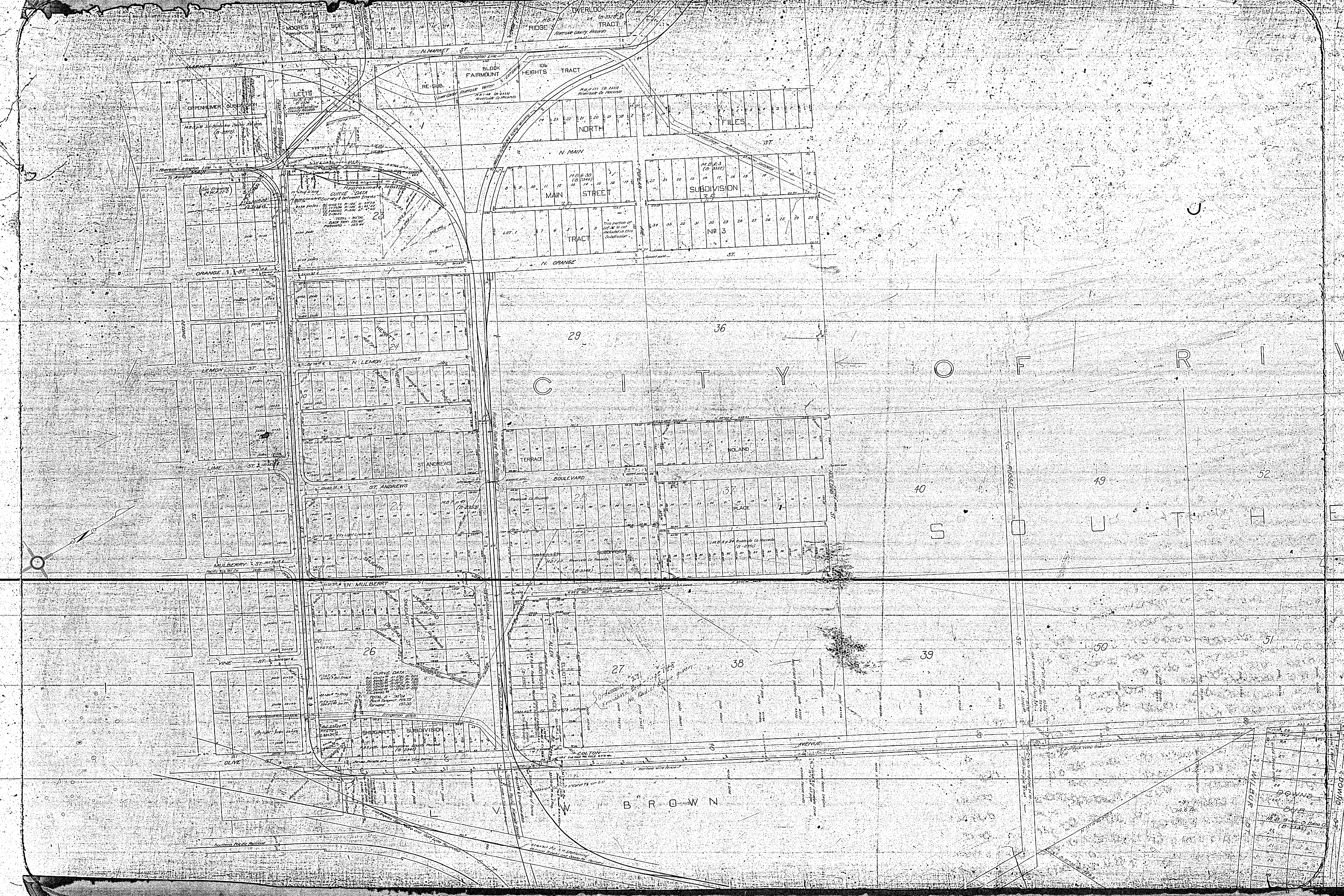
ST. MARY'S AVE.
NORTH LINE CITY OF RIVERSIDE

WILBUR TRACT
M.B. 6-4, Orange Co. Rec. (B-2320)

ORANGE GROWERS BANK ADDITION
N.B. 2-40, Riverside Co. (B-2357)

999C

FRAME 1 of 2



OVERLOOK TRACT
RIDGE
N MARKET ST
BLOCK FAIRMOUNT
RE-SUB.
106 HEIGHTS TRACT
N MAIN ST
FILES

OPPENHEIMER SUBDIVISION
LETTS

MAIN STREET
N ORANGE ST
SUBDIVISION
NR 3

ORANGE ST
LEMON ST
LIME ST

29 36
CITY OF

ST ANDREWS
ST ANDREWS

TERRACE
BOULEVARD
NOLAN PLACE

40 49 52
SOUTH E

MULBERRY ST
VINE ST

26 27 38
SHUGART'S SUBDIVISION
COLTON AVENUE

39 50 51

OLIVE ST

ALLEN
ELIOTT
FLACK

40

BROWN

DOWNING
OLIVE
N.B. 546-0 1/2m. C.
(D. 1345)