

IN THE CITY OF RIVERSIDE, RIVERSIDE COUNTY, CALIFORNIA

SHEET 1 OF 1 SHEETS

# PARCEL MAP

SHOWING THE DIVISION OF PORTIONS OF LOTS 9 AND 12, IN BLOCK "F" OF ARLINGTON HEIGHTS AS SHOWN BY MAP ON FILE IN BOOK 2 OF MAPS, AT PAGE 12 THEREOF, AND OF LOT "A" IN BLOCK "F" OF ARLINGTON HEIGHTS, PER M.B. 3/18, BOTH RECORDS OF RIVERSIDE COUNTY, CALIFORNIA.

**ALBERT A. WEBB ASSOCIATES - CIVIL ENGINEERS**  
RIVERSIDE CALIFORNIA  
AUGUST, 1974

### RECORDER'S CERTIFICATE

Filed this 20 day of May, 1975 at 3:25 P.M.  
in Book 18 of Parcel Maps at page 12 at  
the request of the City Engineer.

Fee \$5.00 W.D. Balogh  
County Recorder

No. 58512 by Harold C. Beale Deputy

### SURVEYOR'S CERTIFICATE

This map was prepared by me or under my direction and was compiled from record data in conformance with the requirements of the Subdivision Map Act of the request of Clyde Ditchford on August 1974. I hereby certify that it conforms to the approved tentative map and the conditions of approval thereof, that all provisions of applicable state law and local ordinances have been complied with.

Ernest N. Webb, P.C.E. 9876

*Ernest N. Webb*

### SURVEYOR'S NOTES

1. Basis of bearings is the centerline of Hawarden Drive taken as N.5°39'30"W. as shown on map recorded in Book 19 of records of Survey, at page 33 thereof, records of Riverside County, California.

2. Found monuments as noted at all points shown thus ●.

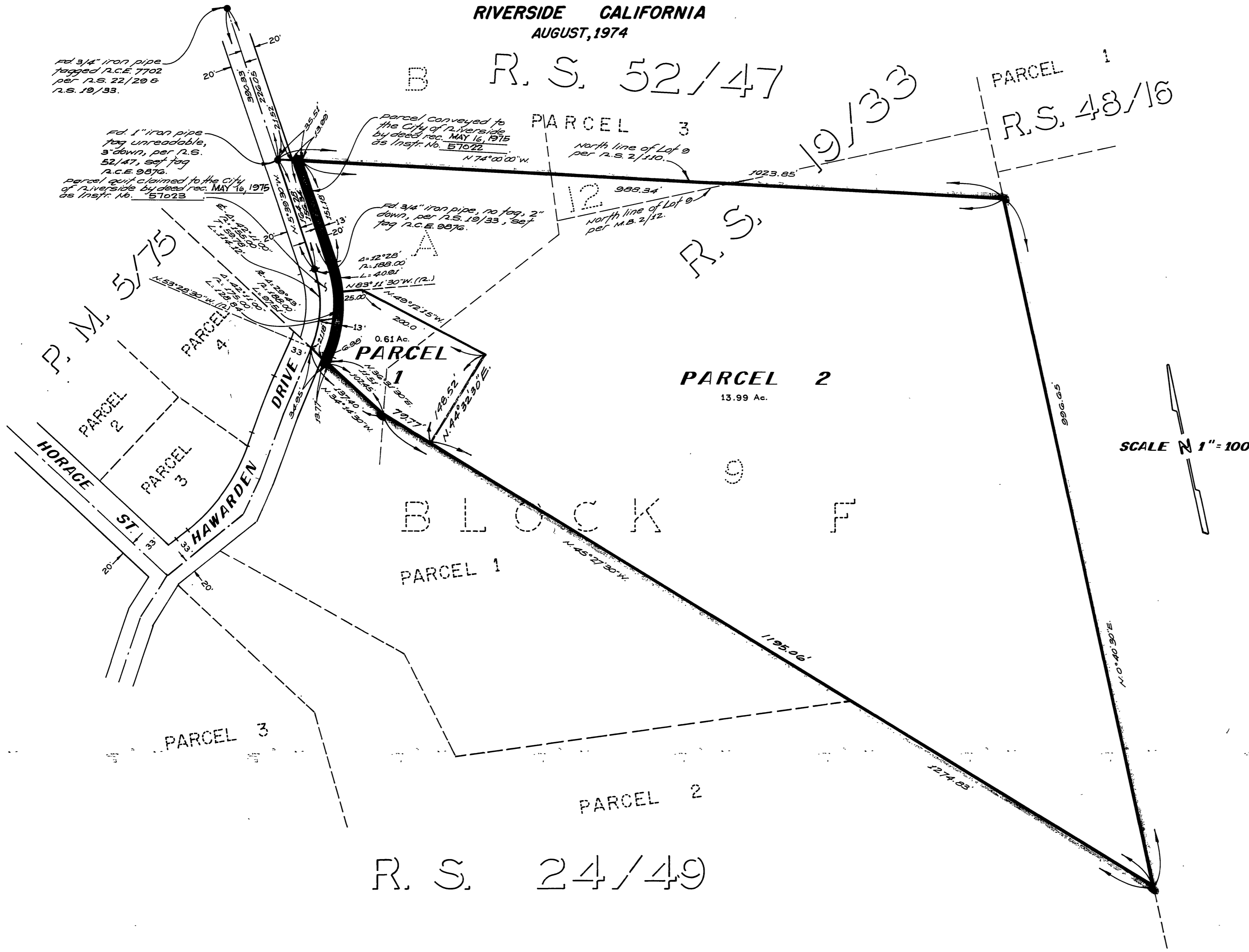
### CITY ENGINEER'S CERTIFICATE

This map has been examined this 20<sup>th</sup> day of MAY, 1975 for conformance with the requirements of Section 11575 of the Subdivision Map Act and Title 18 of the Riverside Municipal Code.

James F. Martinek, P.C.E. 8134  
City Engineer

By *J. Martinek*

Tentative Map approved March 7, 1974.



P.M. 18/12

P.M. 18/12