

# PARCEL MAP

SHEET 1 OF 1 SHEETS

IN THE CITY OF RIVERSIDE  
RIVERSIDE COUNTY, CALIFORNIA  
OF A PORTION OF THE S.E. 1/4 OF THE S.-  
E. 1/4 OF THE S.W. 1/4 OF SECTION 18, T.25.,  
R.4 W., S. B. B. & M.

### RECORDER'S CERTIFICATE

Filed this 7 day of August  
1975, at Llano A.M. in Book 18  
of Parcel Maps at Page 99  
at the request of the City Engineer  
W.D. BALOGH County Recorder  
By Harold C. Beala  
DEPUTY  
No. 95667  
Fee \$ 5.00

JANUARY 1975

SCALE: 1"=50'

**J. F. DAVIDSON ASSOCIATES**  
Riverside, California

### CITY ENGINEER'S CERTIFICATE

This map has been examined this 7<sup>th</sup> day of August  
1975, for conformance with the requirements of  
Section 11575 of the Subdivision Map Act and Title  
18 of the Riverside Municipal Code.

JAMES F. MARTINEK R.C.E. 8134

City Engineer  
By J. Martinek

TENTATIVE MAP APPROVED FEB. 20, 1975

### SURVEYOR'S CERTIFICATE

This map was prepared by me or under my direction  
and is based upon a field survey  
in conformance with the requirements of the Subdivision  
Map Act at the request of United Parcel Service  
on January 27, 1975, I hereby certify that it conforms  
to the approved Tentative Map and the conditions of  
approval thereof; that all provisions of applicable  
state law and local ordinances have been complied with

Robert S. Kipper  
Robert S. Kipper R.C. 113699

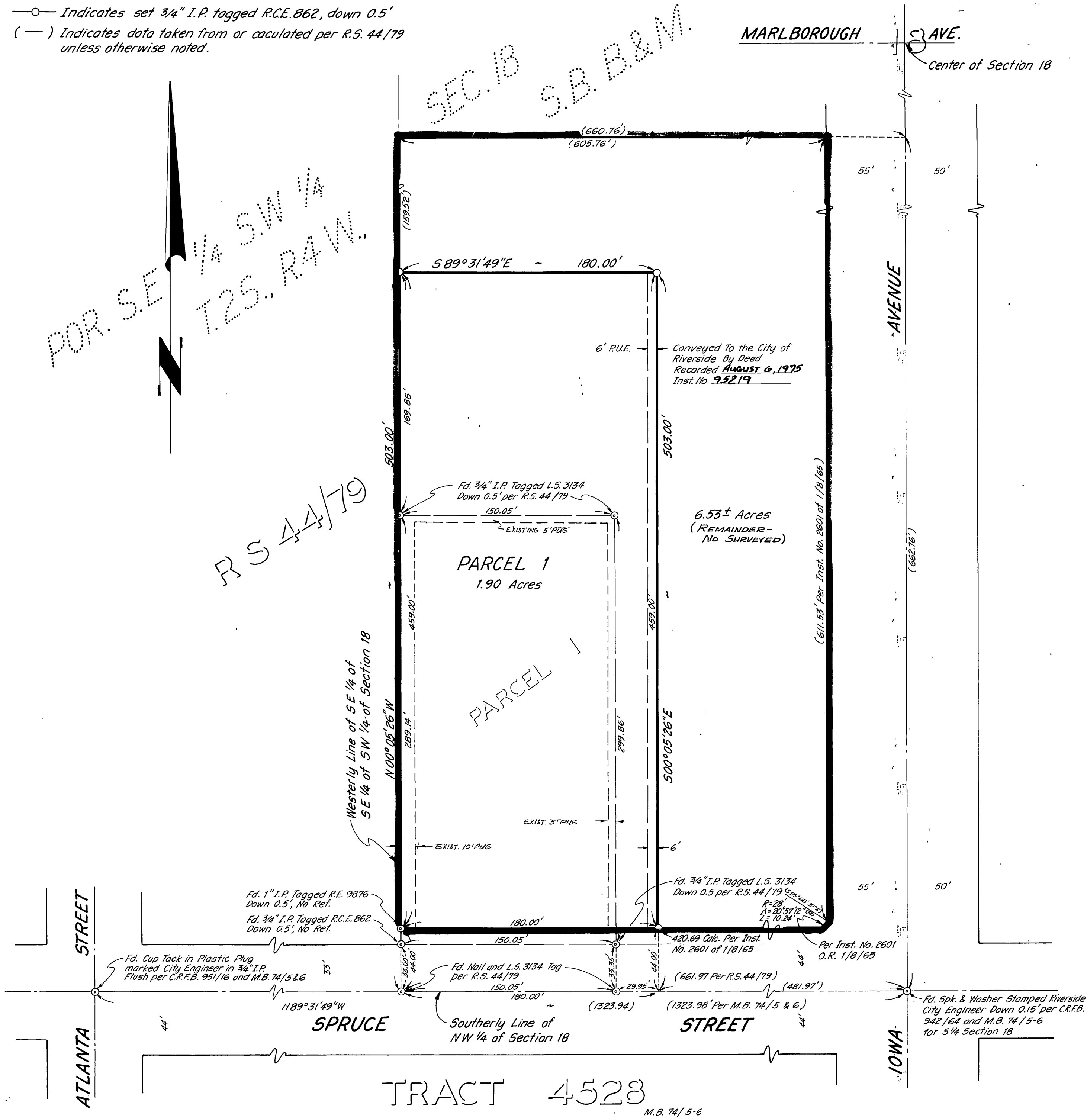
### SURVEYORS NOTES

Bearings are based on the  $\frac{1}{2}$  of Spruce Street as being  
N 89° 31' 49" W per map of Tract No. 4528, M.B. 74/5 & 6,  
Records of Riverside County, California

- Indicates found points as noted
- Indicates set 3/4" I.P. tagged R.C.E. 862, down 0.5'
- (—) Indicates data taken from or calculated per R.S. 44/79 unless otherwise noted.

SEC. 18 S.B. B. & M.  
POR. S.E. 1/4 SW 1/4 T.25., R.4 W.

RS 44/79



TRACT 4528  
M.B. 74/5-6