

ADDITION TO BANDINI DONATION.

Part of Section 12 Twp 2 S. R. 5 W. S. B. M.

Riverside Co. California.

Scale 200ft. = 1 inch.

J. M. Topp L. Surveyor

Dec. 20th. 1893.

Made at the instance of

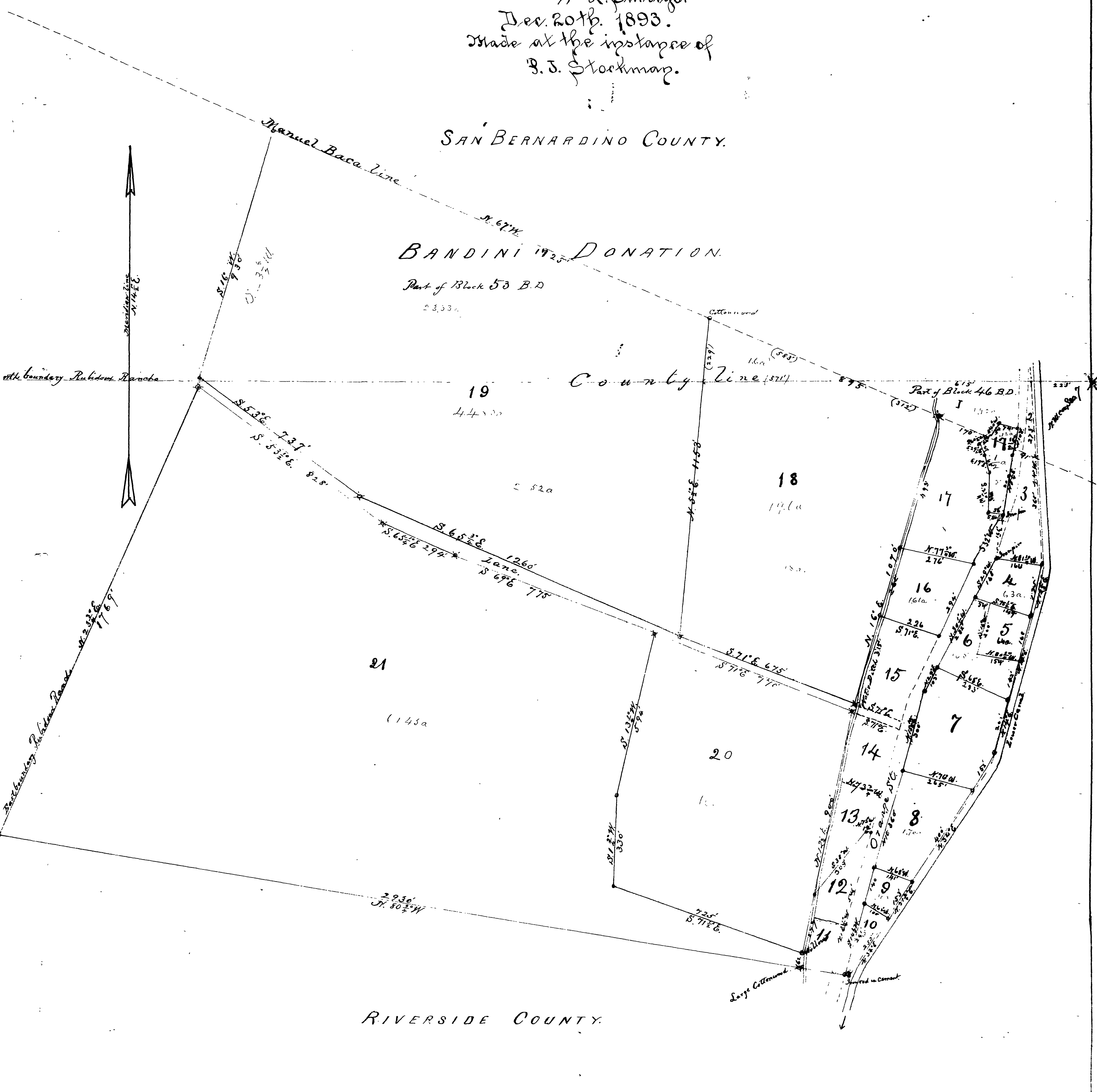
B. J. Stockman.

SAN BERNARDINO COUNTY.

BANDINI DONATION.

Part of Block 53 B.D.

2333a



Section 12
T. 2 S. R. 5 W. S. B. M.

I, J. M. Topp, a regularly licensed Surveyor,
do hereby certify that the above map correctly
represents a Survey made by me.
Witness my hand and official seal this 27th day
of January 1894.

J. M. Topp Licensed Surveyor.

Filed at Request of
Frank Rubidoux
30th of January 1894
at 5 o'clock PM
J. M. Topp
B. J. Stockman