

I hereby certify that this map of VICTORIA HEIGHTS is a correct representation of the survey made by me May 1903.

Kingsbury Sanborn.

State of California ) ss.  
County of Riverside

On this 6th day of June in the year of our Lord One Thousand Nine Hundred and Three before me W.A. Correll, a Notary Public in and for said County of Riverside, residing therein, duly commissioned and sworn, personally appeared — C.E. Rumsey, personally known to me to be the person designated in and whose name is subscribed to, and who executed the within instrument and acknowledged to me that he executed the same freely and voluntarily.

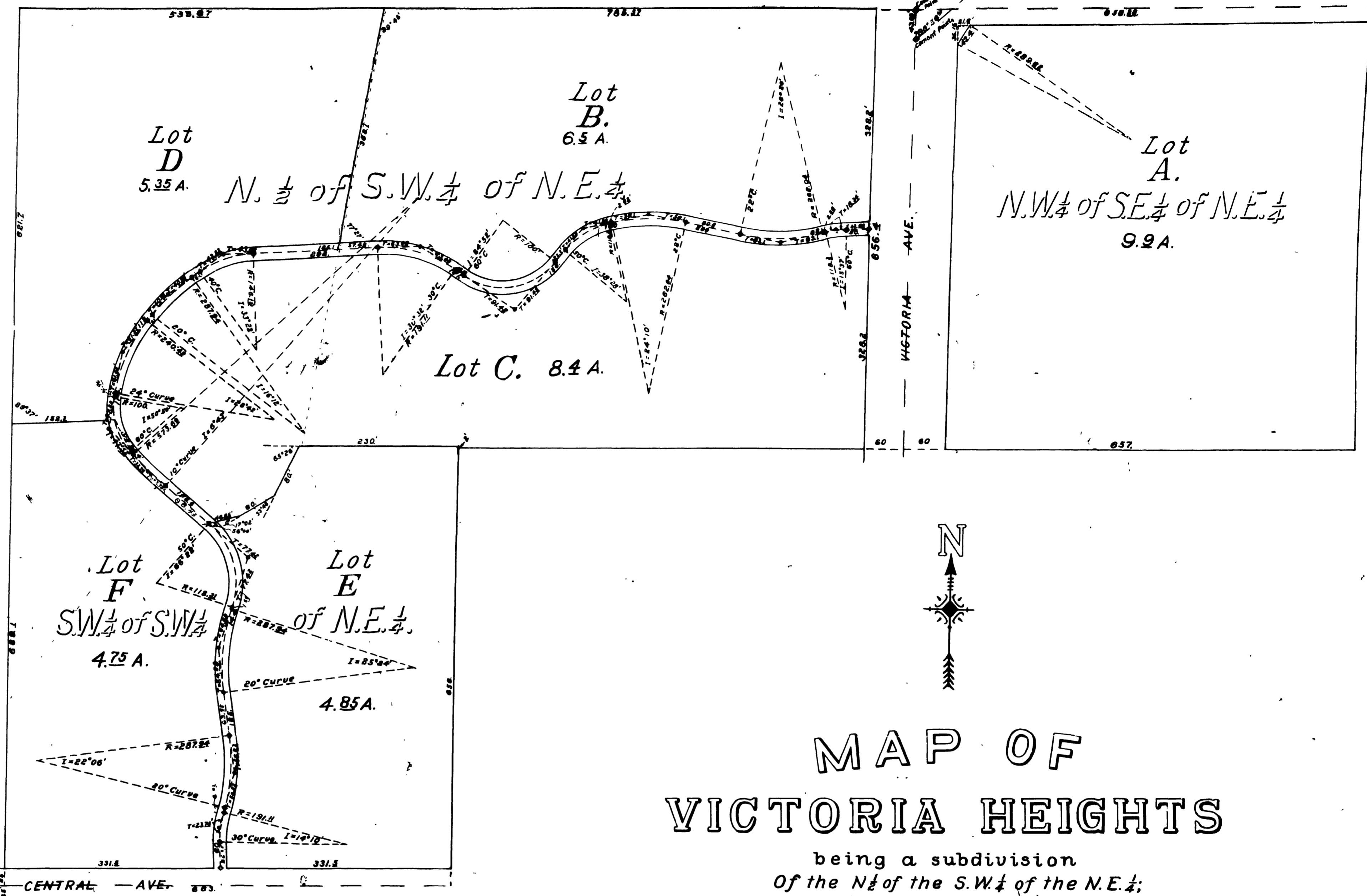
IN WITNESS WHEREOF I have hereunto set my hand and official seal at my office in Riverside in the said County, the day and year in this Certificate first above written.

W.A. Correll

Notary Public in and for Riverside County, State of California.

I hereby execute and adopt this Map of VICTORIA HEIGHTS as surveyed by Kingsbury Sanborn, C.E. in May, 1903, to designate the different parts of land which it represents as divided into lots and streets.

C.E. Rumsey



Note:— Acreage is computed to center of streets; 2"x3" posts are set at corners, and cement points are delineated on the map thus (⊙)

# MAP OF VICTORIA HEIGHTS

being a subdivision  
Of the N. 1/2 of the S.W. 1/4 of the N.E. 1/4;  
the S.W. 1/4 of the S.W. 1/4 of the N.E. 1/4;  
the N.W. 1/4 of the S.E. 1/4 of the N.E. 1/4;  
and 5 Acres in the N.E. 1/4 of the N.E. 1/4  
of the S.W. 1/4; all in Section 35  
T. 2 S., R. 5 W., S. B. B. & M.

Surveyed by  
KINGSBURY SANBORN C.E.  
May 1903.

Scale 1 inch = 100 ft.

RS 1/57

RS 1/57