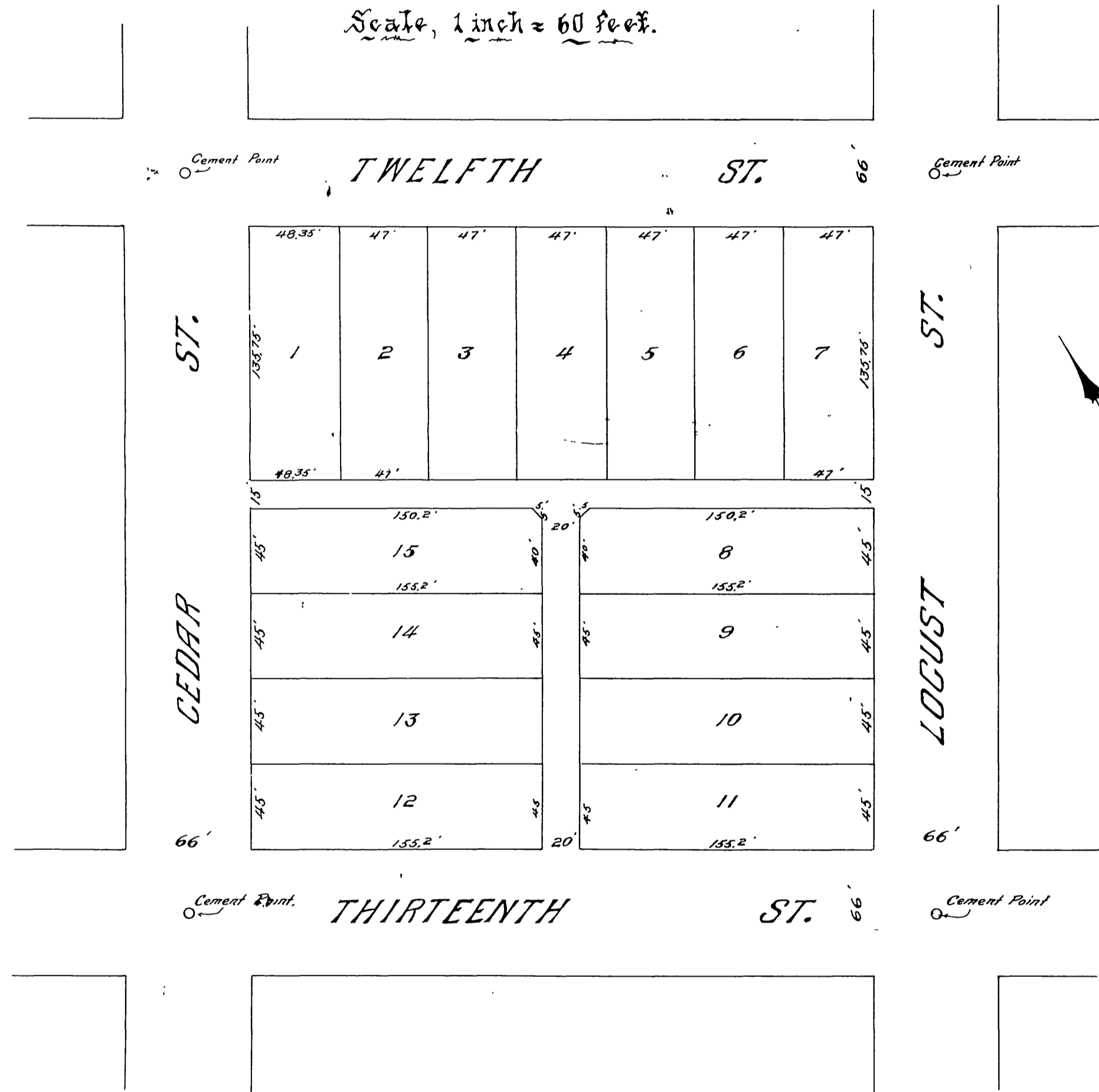


63
Filed
11/10/09

MAP OF THE ERDICE SUBDIVISION

BEING A RESUBDIVISION OF BLOCK 12 RANGE 12 OF THE TOWN, NOW CITY OF RIVERSIDE, AS RECORDED IN BOOK 7 OF MAPS, PAGE 17, RECORDS OF THE COUNTY OF SAN-BERNARDINO, STATE OF CALIFORNIA
NOVEMBER, 1909. A. P. CAMPBELL, C.E.

Scale, 1 inch = 60 feet.



RS 3 / 40

I hereby certify that this map is a correct representation of the survey made by me in November, 1909.
A. P. Campbell
C.E.