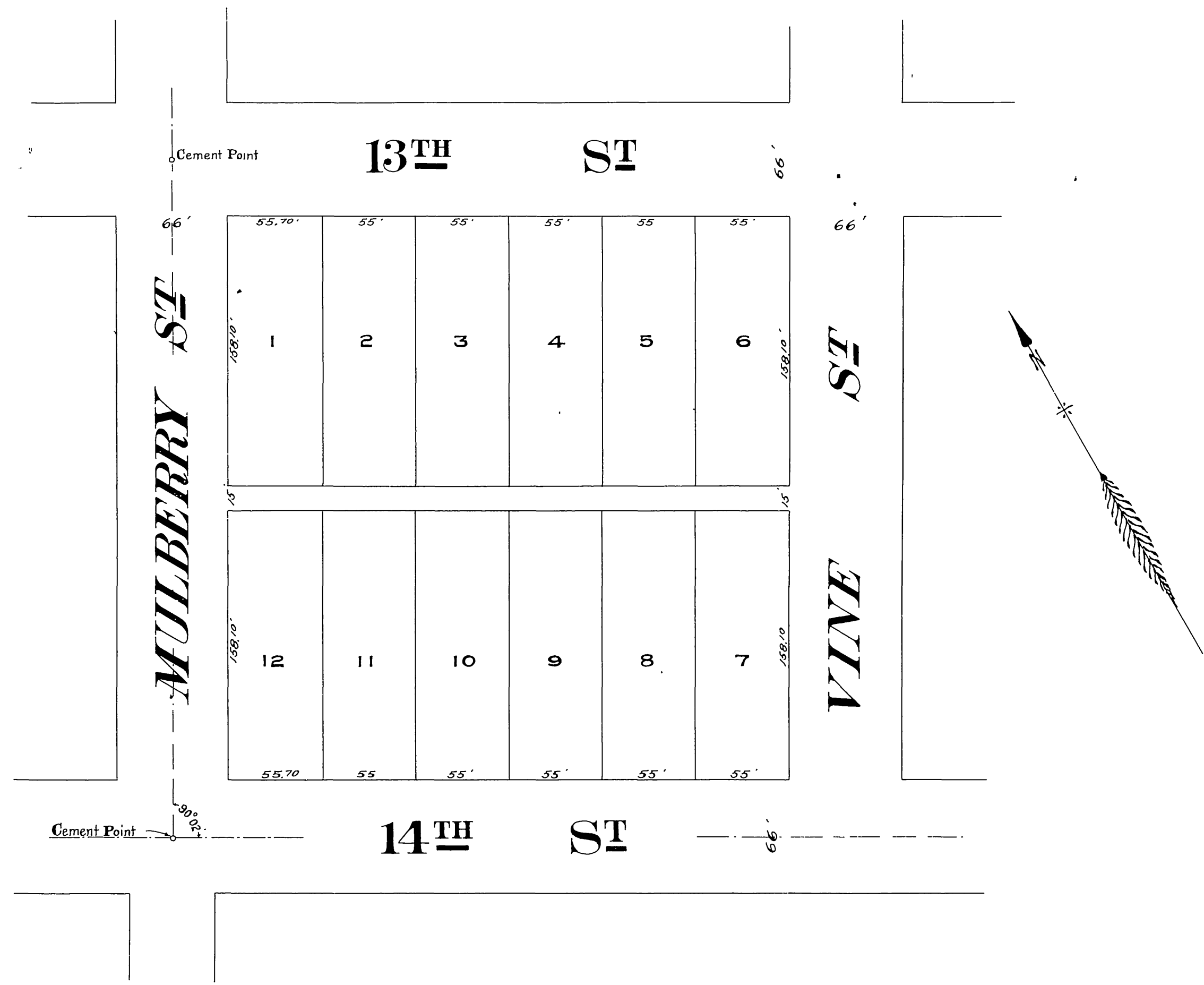


**MAP OF**  
**P. S. CASTLEMAN'S SUBDIVISION**  
 OF BLOCK 13 RANGE 2 of the City of  
 RIVERSIDE, RIVERSIDE COUNTY, CALIFORNIA.  
 Surveyed in January, 1910, by A. P. Campbell, C.E.  
 Scale, 1 inch = 60 feet.

*Subd. by A.P. Campbell*



*Thereby certify that this map is a  
 correct representation of the survey  
 made by me in January, 1910.*  
*A.P. Campbell*  
*Licensed Surveyor.*