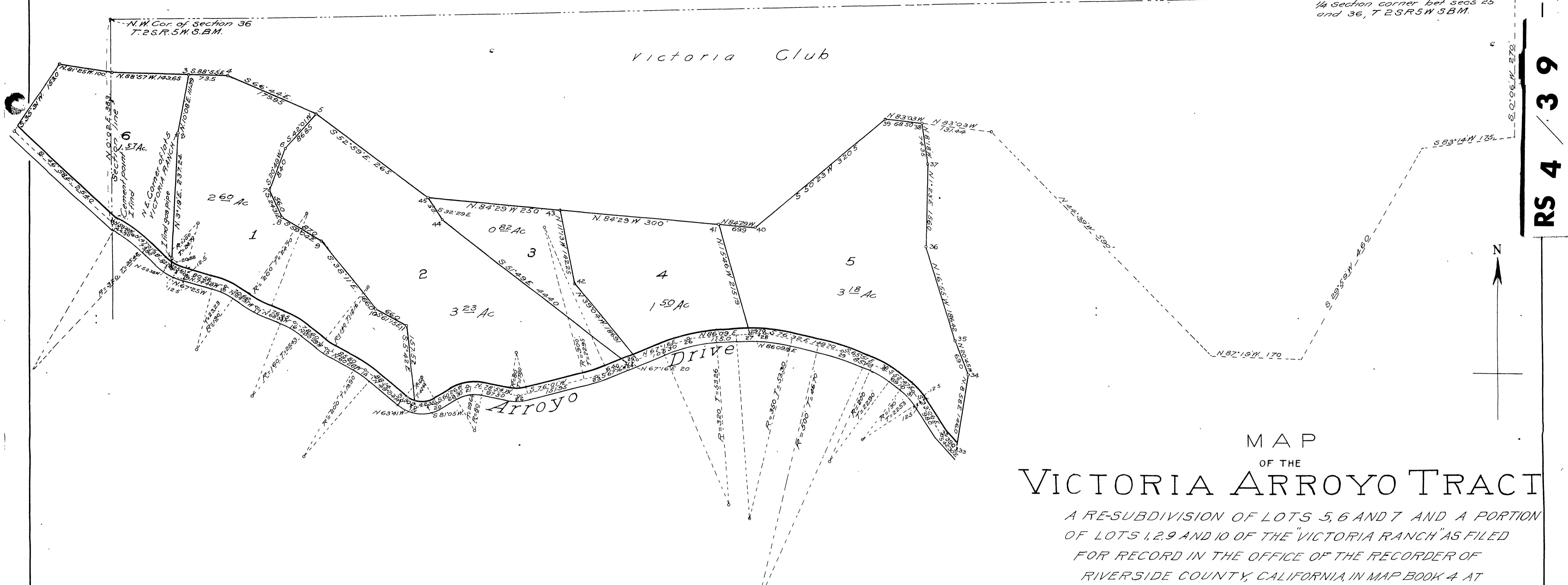


39

RS 4 / 39



MAP  
OF THE  
VICTORIA ARROYO TRACT

A RE-SUBDIVISION OF LOTS 5, 6 AND 7 AND A PORTION  
OF LOTS 1, 2, 9 AND 10 OF THE "VICTORIA RANCH" AS FILED  
FOR RECORD IN THE OFFICE OF THE RECORDER OF  
RIVERSIDE COUNTY, CALIFORNIA, IN MAP BOOK 4 AT  
PAGE 59 THEREOF.

Surveyed by  
Geo. M. Pearson, C. E.  
May, 1911  
Scale 100 ft. per inch

NOTE

At stations 3, 4, 5, 39, 40, and 45, I find gas pipes set in concrete.  
At stations 38, 41 and 43 and at intersections of lot lines with north line of Arroyo Drive, I set gas pipe with bottom of same imbedded in concrete.  
At stations 1, 12, 13, 14, 15, 16, 17, 18, 19, 20, 21, 22, 23, 24, 25, 26, 27, 28, 29, 30, 31, 32, and 33, I set cement points.  
Area of lots figured by a planimeter. Areas do not include street.

I hereby certify that this map of the  
VICTORIA ARROYO TRACT, correctly  
represents the survey made by me in  
May 1911  
Geo. M. Pearson, C. E.  
Licensed Land Surveyor.

15

Filed Nov. 14, 1911.  
J. D. Logan, Recorder  
W. H. Campbell, Deputy  
Geo. M. Pearson

RS 4 / 39

RS 4 / 39