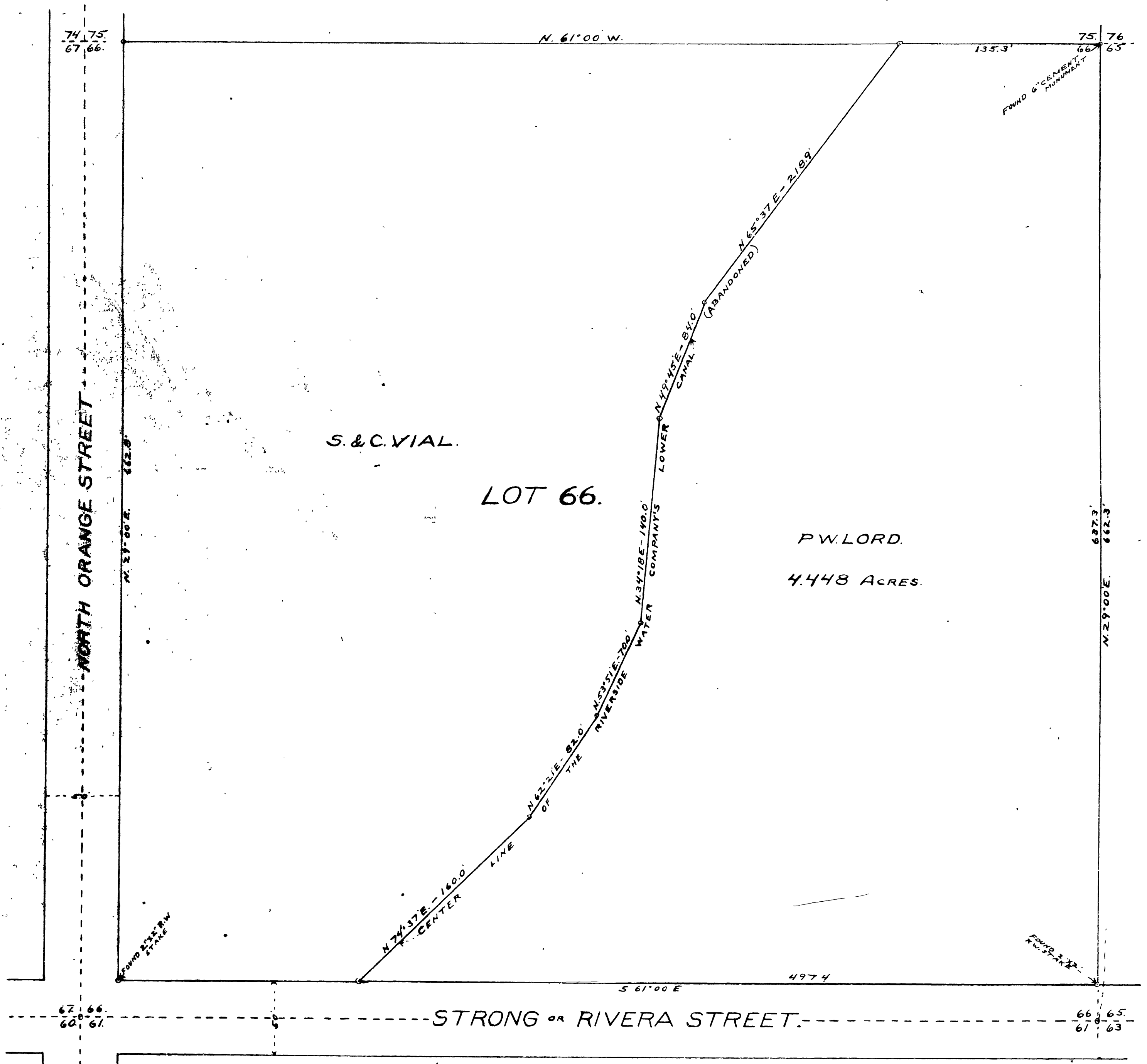


**RECORD OF SURVEY MAP**  
**SHOWING THE CENTER LINE OF THE RIVERSIDE WATER**  
**COMPANY'S LOWER CANAL (ABANDONED), THROUGH LOT 66**  
**S.C.C.A. LANDS. RIVERSIDE COUNTY, CALIFORNIA.**

SAID CENTER LINE IS THE ACCEPTED DIVISION LINE BETWEEN  
 THE PROPERTIES OF R.W. LORD AND S.&C. VIAL.

I hereby certify that this map correctly represents a survey as made by me in JANUARY, 1922.

Scale 1 INCH = 50 FEET  
 Date - 2/12/22  
*H. D. Pringle*  
 Surveyor



RS 6/31

RS 6/31