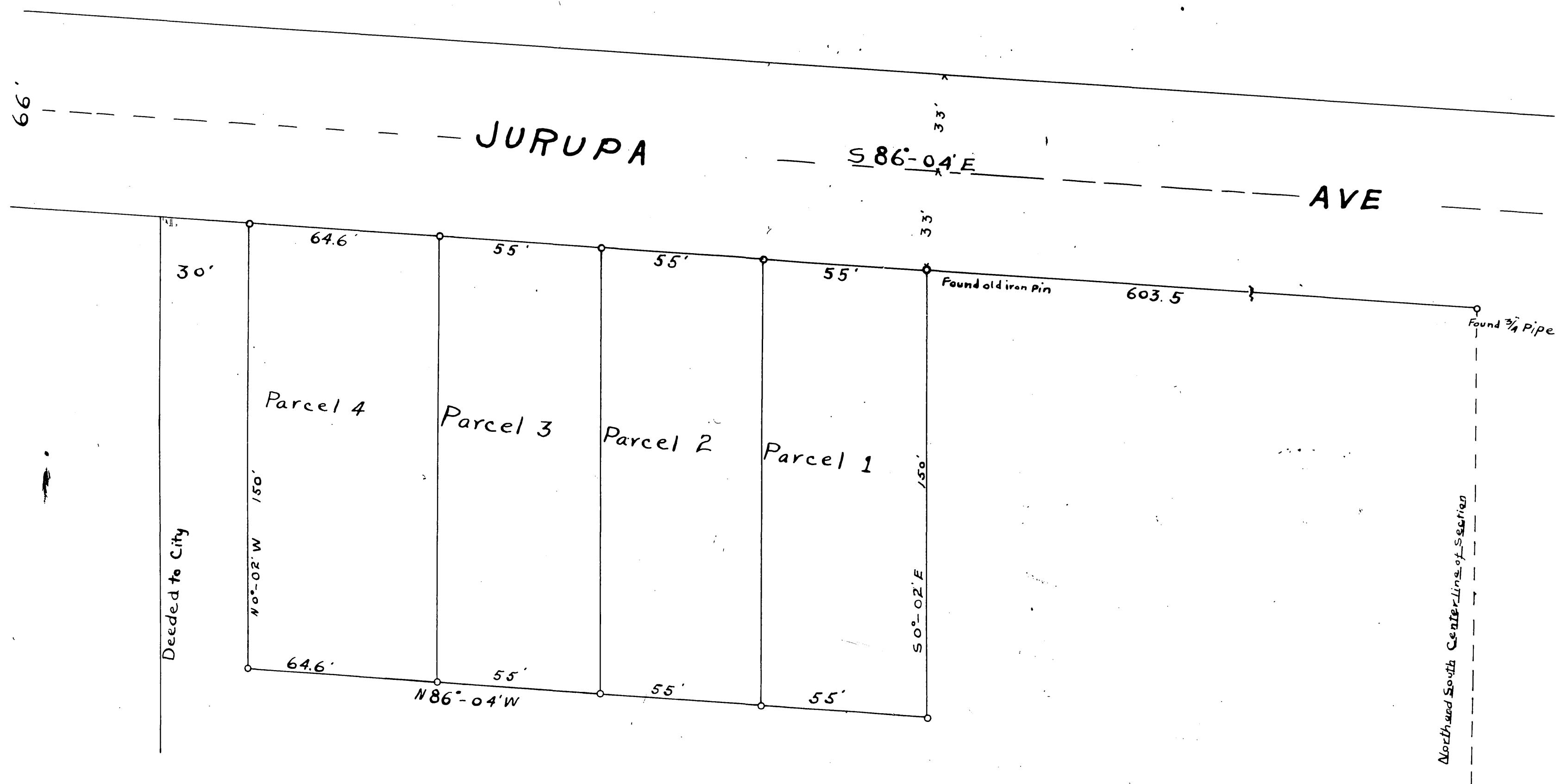
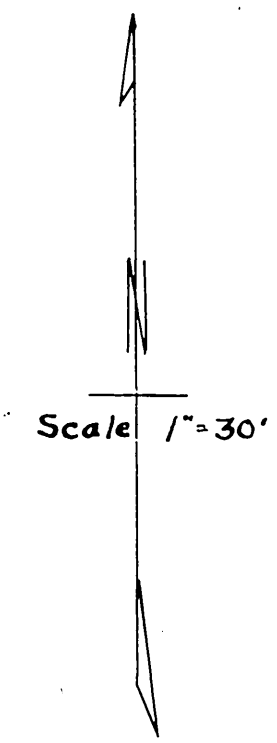


AUG 2 1926  
J. A. R. R.  
COUNTY RECORDER  
DEPUTY  
H. P. M.

# SURVEY OF PORTION OF SECTION 28 T. 2 S., R. 5 W., S. B. B. M.

Surveyed at request of J. R. Wilson.  
Set 3/4 pipe at all corners.



I hereby certify that I am a licensed Land Surveyor, of the State of California and that this map consisting of one sheet correctly represents a survey made by me July 1926, and that all the monuments shown hereon actually exist, and their positions are correctly shown.

*J. A. R. R.*  
Licensed Land Surveyor.

R/S 7/85

R/S 7/85