

RECORD OF A SURVEY

OF A PORTION OF THE COMBINATION TRACT AS SHOWN
ON MAP RECORDED IN BOOK 7 PAGE 14 OF MAPS, RECORDS OF
RIVERSIDE COUNTY CALIFORNIA

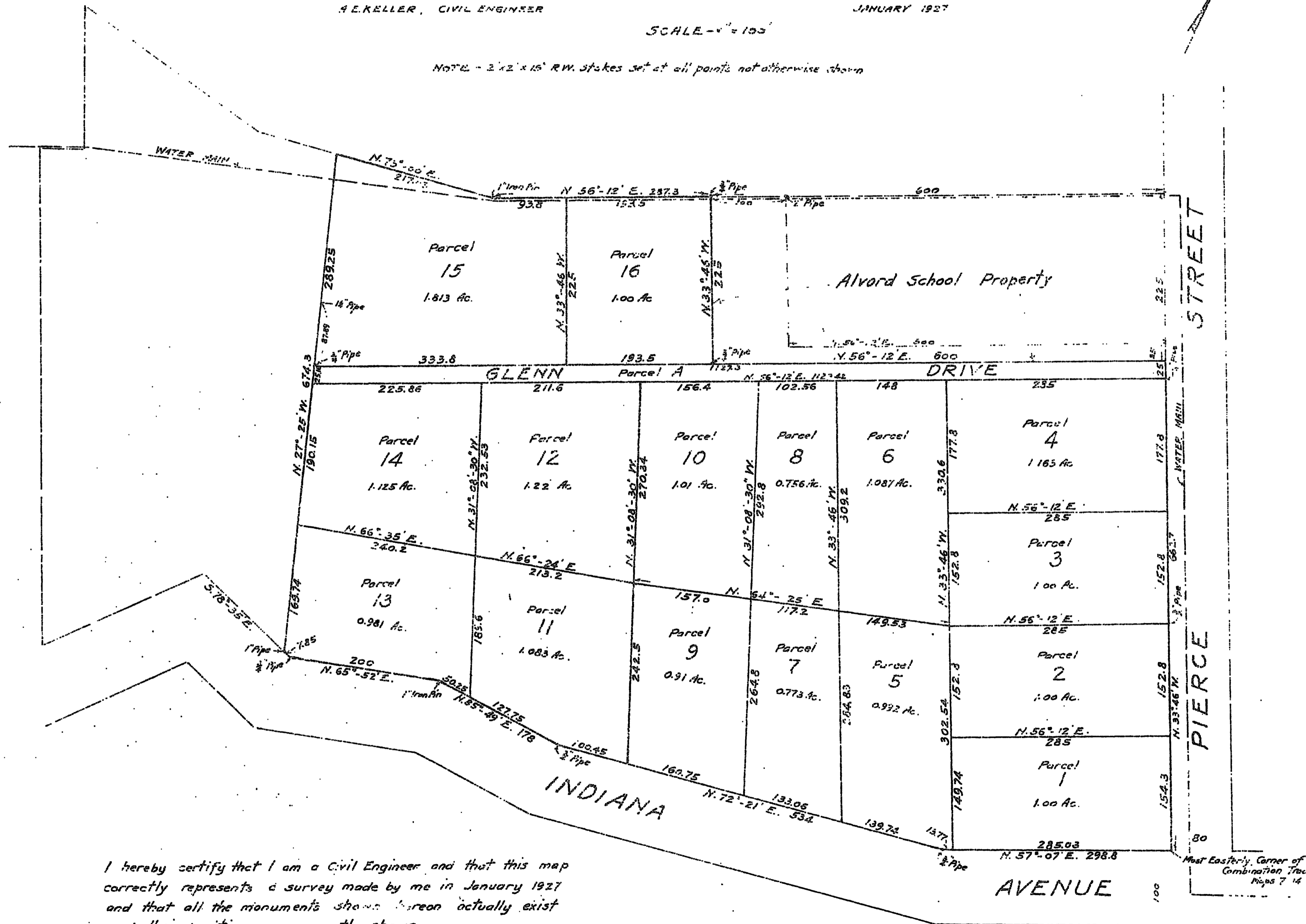
A. E. KELLER, CIVIL ENGINEER

JANUARY 1927

SCALE - 1" = 100'

NOTE - 2" x 2" x 15" R.W. stakes set at all points not otherwise shown

A. E. Keller
J. A. Ross
D. J. Fox
9:30 P.M.



I hereby certify that I am a Civil Engineer and that this map correctly represents a survey made by me in January 1927 and that all the monuments shown hereon actually exist and their positions are correctly shown.

A. E. Keller
Civil Engineer.