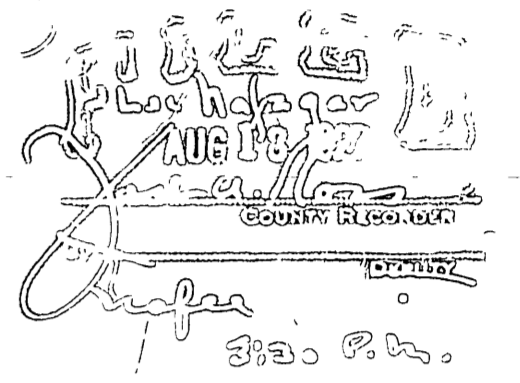
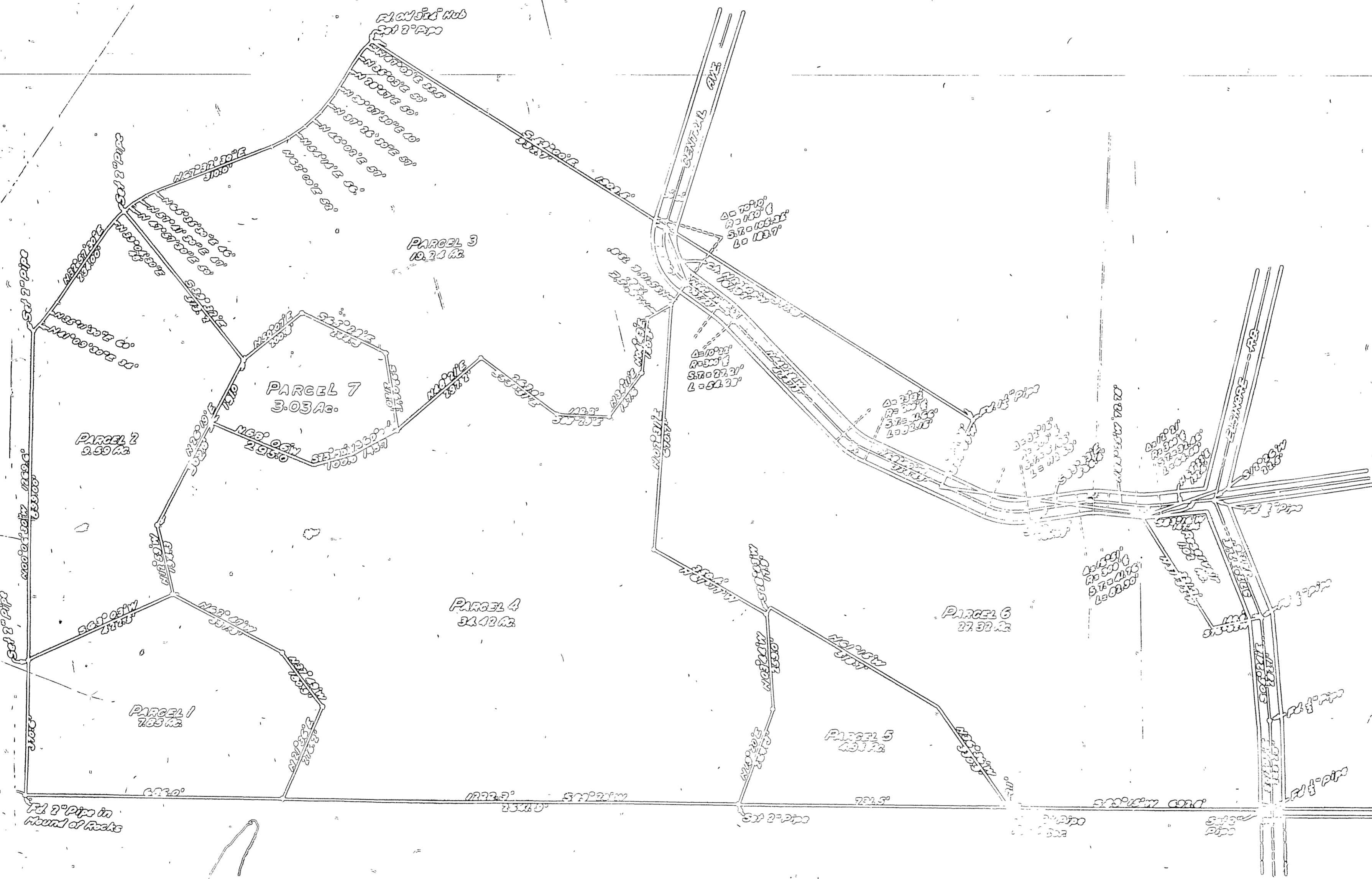


RECORD OF SURVEY
 Of A Portion of the South Half of Section 36 T2S, R5W, S.B. & M.
 Surveyed at the Request of L. Montgomery et Al

By
LEE NAFZGAR Civil Engineer
 August 1927

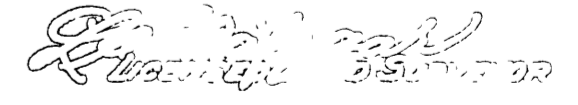
1653


 Lee Nafzgar
 Civil Engineer
 State of Missouri
 No. 10818
 August 1927



SCALE 1" = 100'

I hereby certify that I am a Licensed Land Surveyor of the State of Missouri, and that this map consisting of several sheets correctly represents a survey made under my supervision in August 1927, that all measurements were taken carefully and that positions are correctly shown.


 Lee Nafzgar
 Civil Engineer

NOTE
 If by showings or other means it is otherwise noted

R/S 8/32

R/S 8-32

R/S 8/32