

RECORD SURVEY MAP
OF PORTIONS OF

LOTS 3 & 5 BLOCK 29 R. L. & I. CO. LANDS

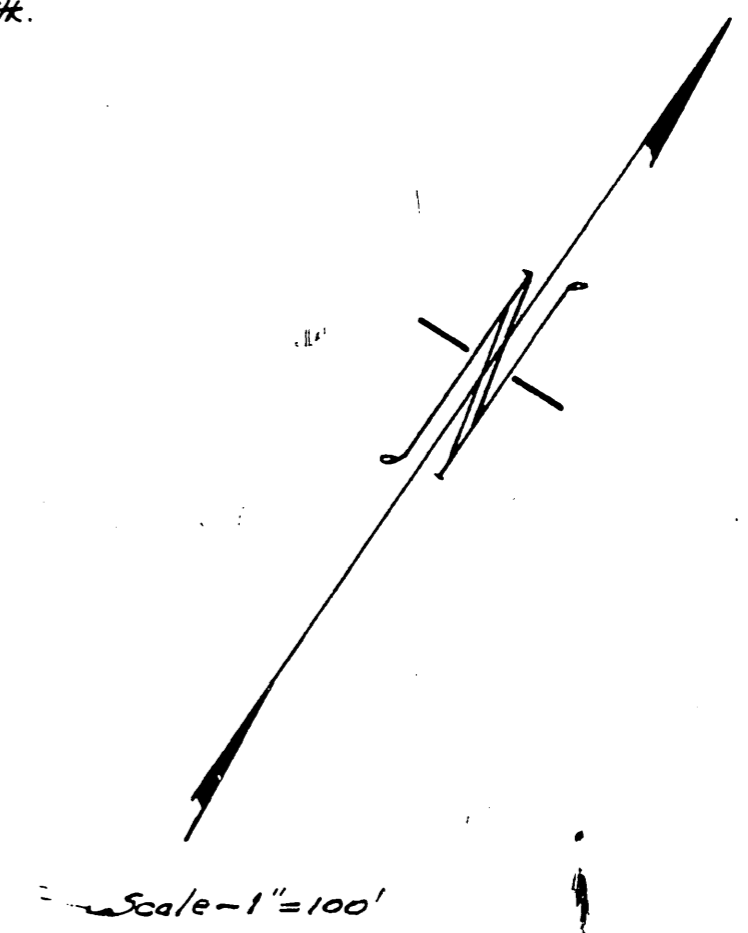
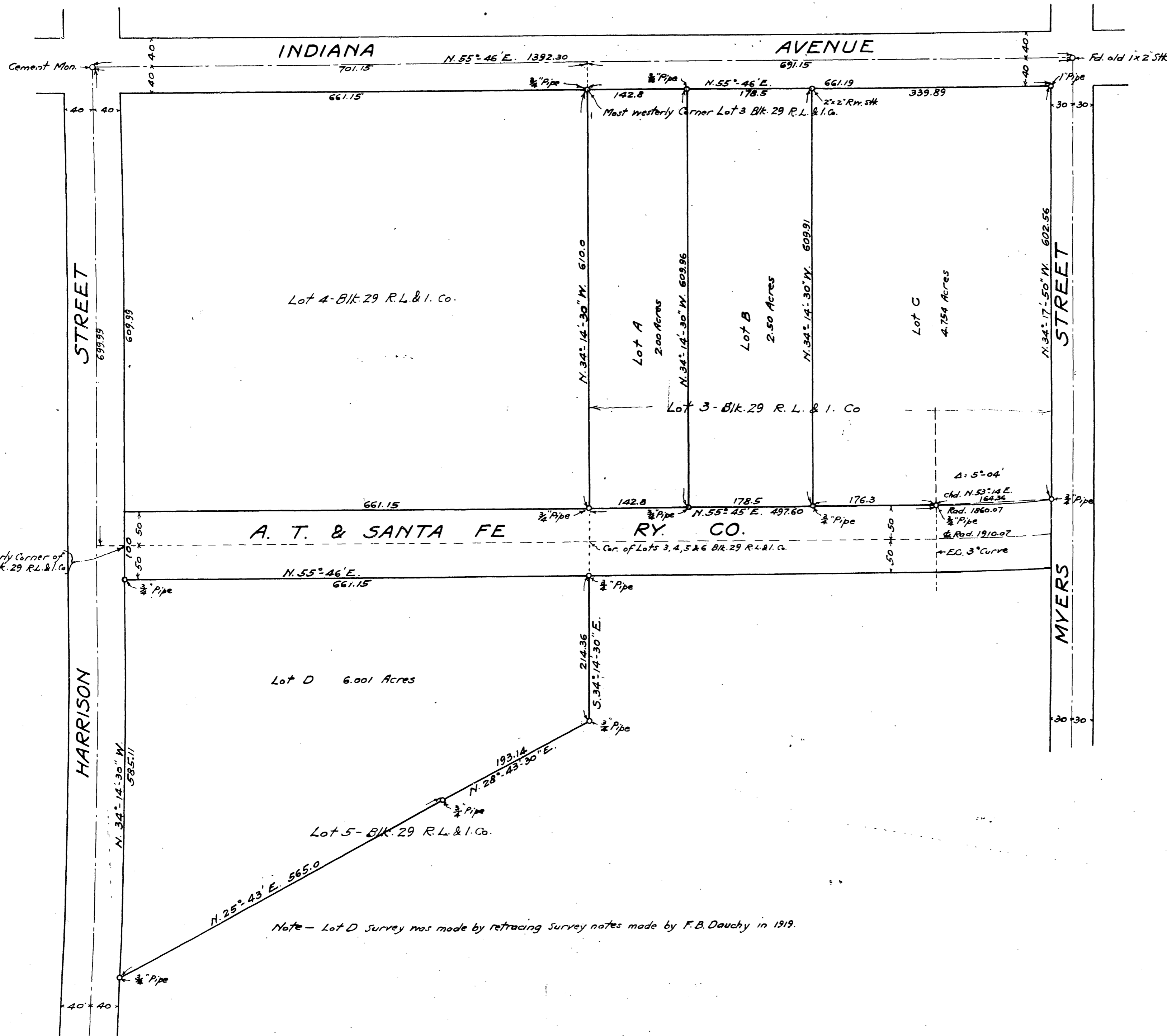
ON FILE IN MAP BOOK 1, PAGE 70, RECORDS OF SAN BERNARDINO COUNTY, CALIFORNIA
AND LOCATED IN CITY OF RIVERSIDE, CALIFORNIA

549

R/S 8/58

JAN 10 1928
JACK A. ROSS
F. B. ROWE

12 M.
By Albert E. Keller



I hereby certify that I am a civil engineer and that this map correctly represents a survey made by me in December 1927 and that all the monuments shown hereon actually exist and their positions are correctly shown.

Albert E. Keller
LICENSED SURVEYOR

R/S 8/58

R/S 8/58