

RECORD OF SURVEY

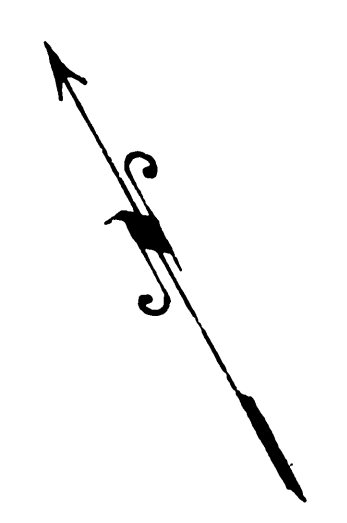
MAP OF
OF A PORTION OF LOT 54 S.C.C.A. LANDS

AS RECORDED IN MAP BOOK 1, PAGE 18, RECORDS OF SAN BERNARDINO COUNTY, CALIFORNIA.

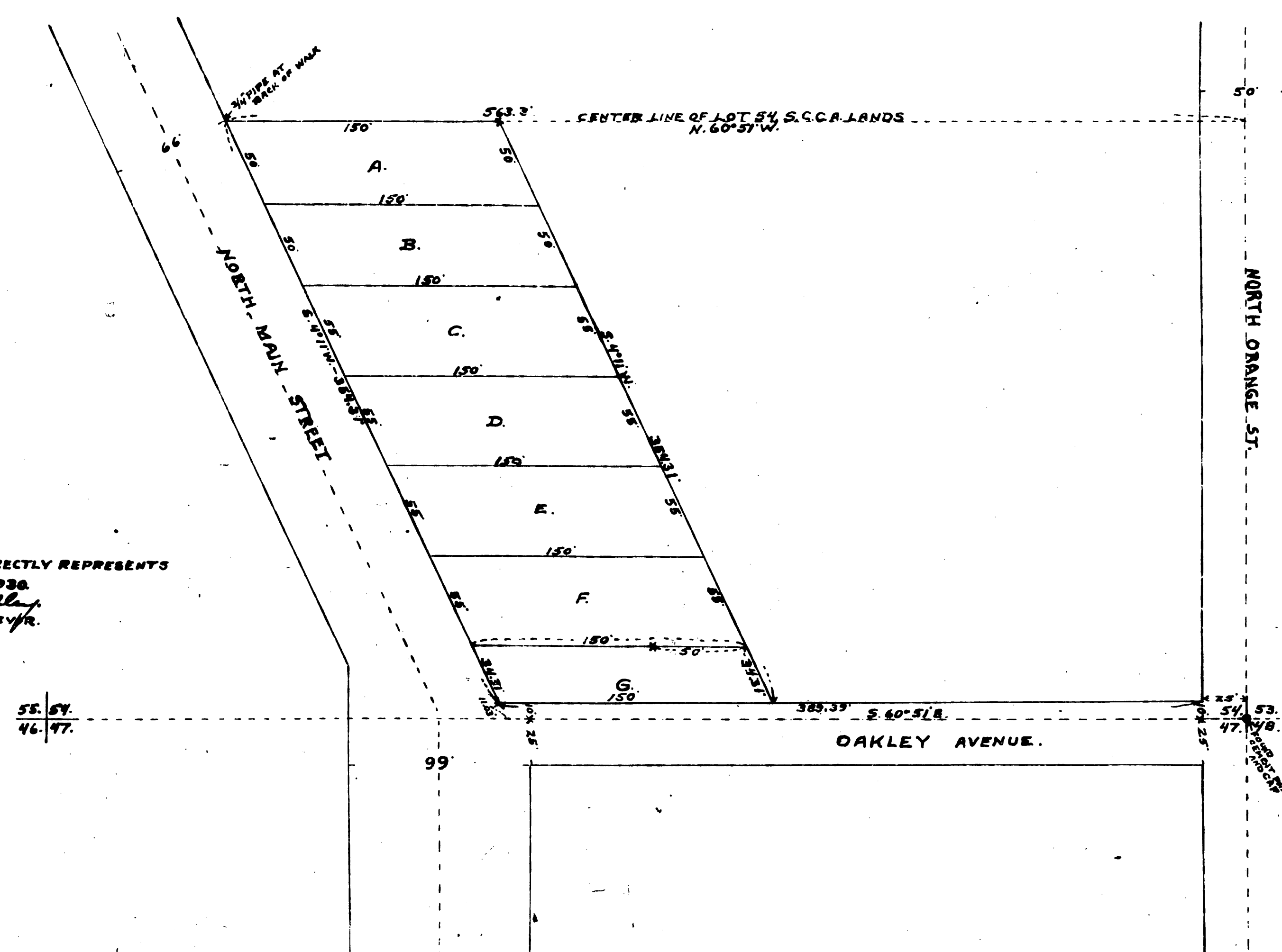
SURVEYED BY H.D. BRADLEY, JAN. 1930.

SCALE 1 INCH = 50 FEET.

H.D. Bradley
JAN 27 1930
and A. J. Ross
no fee
8:30 a.m.



(FREMONT SCHOOL)



I HEREBY CERTIFY THAT THIS MAP CORRECTLY REPRESENTS
A SURVEY AS MADE BY ME IN JANUARY, 1930.
H. D. Bradley
LICENSED SURVEYOR.

55.54
46.47

99

OAKLEY AVENUE.

53
47

RS 9 / 63

RS 9/63

RS 9/63

9/63

33

2 B 1

RS 9/63