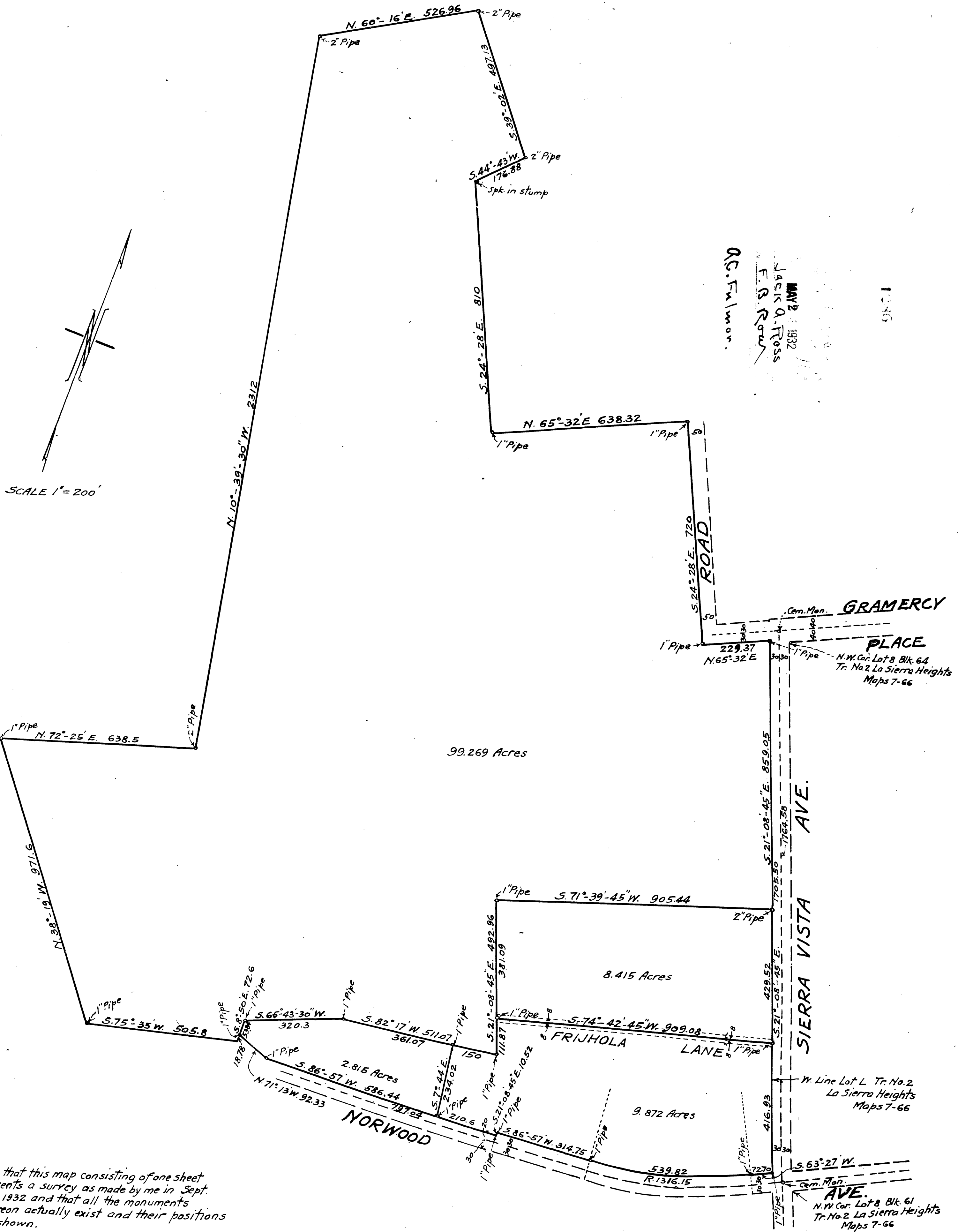


# AMENDED MAP SHOWING RECORD SURVEY OF SIERRA VISTA RANGHO

LOCATED IN RANGHO LA SIERRA  
RIVERSIDE COUNTY CALIFORNIA  
SURVEYED BY A.E. KELLER      MAY 1932



I hereby certify that this map consisting of one sheet correctly represents a survey as made by me in Sept. 1931 and May 1932 and that all the monuments delineated thereon actually exist and their positions are correctly shown.

Albert E. Keller  
LICENSED SURVEYOR

Note - The bearings shown hereon are true courses derived from an observation on Polaris.

Approved May 23, 1932  
A. E. Fulmer  
County Surveyor

RS 10 / 1 8