

MM KENDALLS SUBD.

16 15 14 13

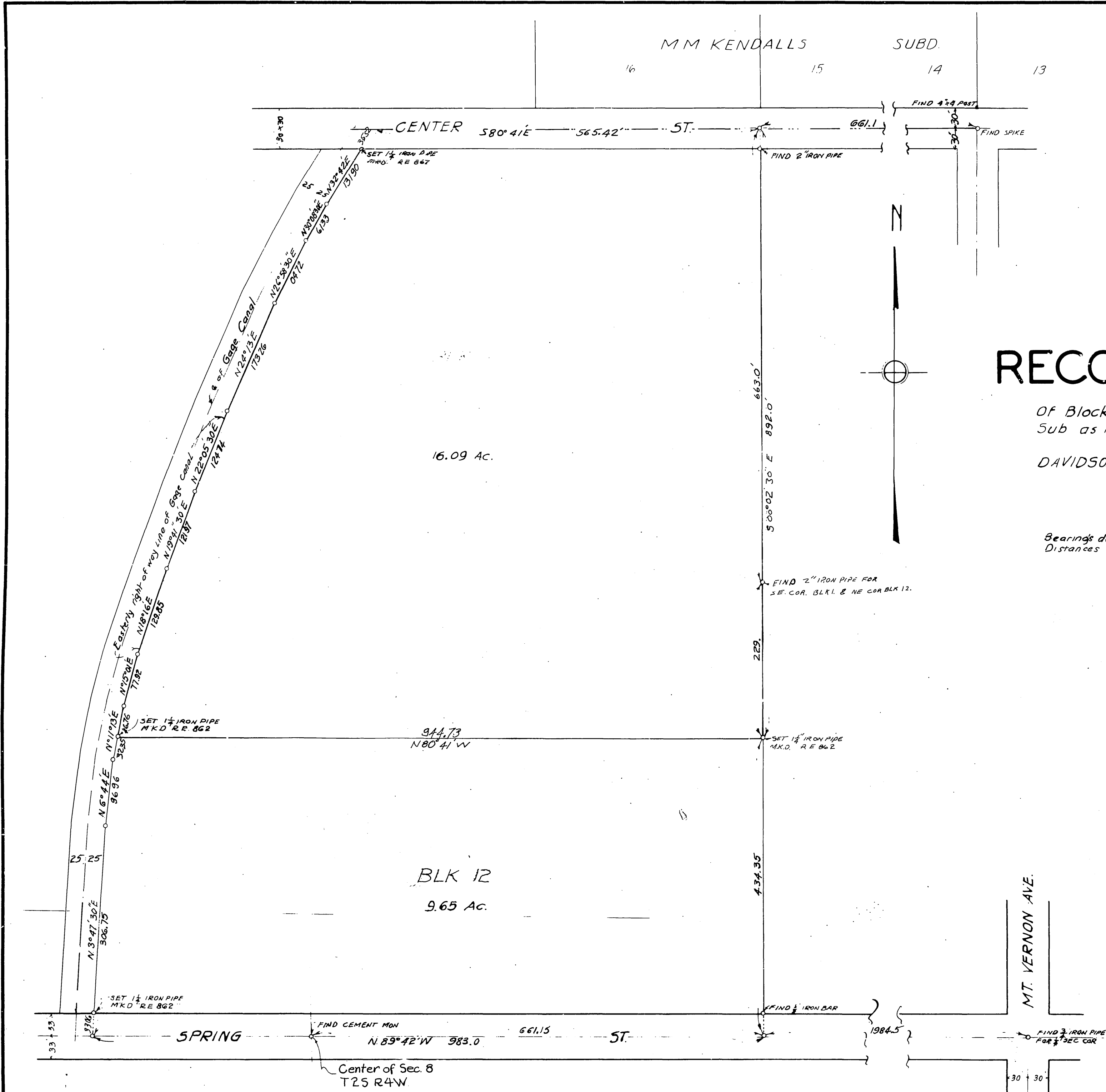
Sept. 18, 1935
Jack Q. Ross
F.B. Row.
By A.S. Fulmor

RECORD OF SURVEY

Of Block 1 and a portion of Block 12 of Murphys Sub as recorded in Map Book 8, page 66, records of San Bernardino Co Calif.
DAVIDSON & FULMOR Engineers. Sept. 1935.
Scale - 1"=100'

~ NOTE ~

Bearings derived from a Solar Observation and are true courses
Distances are shown in feet and decimals thereof



I, J. F. DAVIDSON do hereby certify that I am a Registered Civil Engineer of the State of California, and that this map, consisting of one sheet, correctly represents a survey made under my supervision in Sept. 1935, and that all the monuments shown thereon actually exist and their positions are correctly shown. Dated this 10th day of September, 1935.

J. F. Davidson
Registered Engineer No. 862.

Examined, Sept. 16, 1935.
A. S. Fulmor
County Surveyor

RS 10 7 8