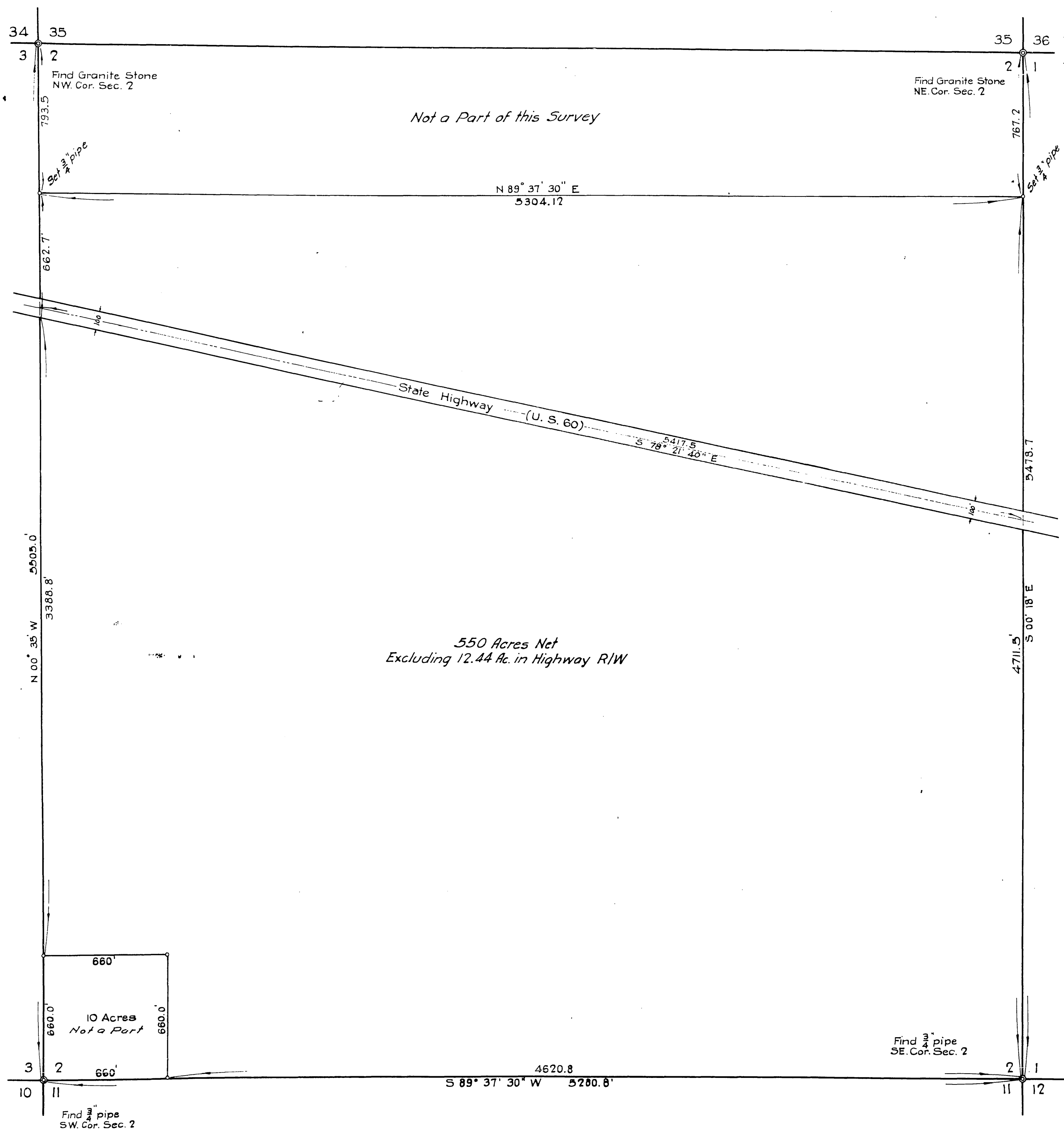


R/S 11/98



FILED
JUN 7 1940
Jack A. Ross
COUNTY RECORDER
By O. U. Heat
DEPUTY
Filed 11:45 A.M.
Fee \$1.00

RECORD OF SURVEY

Of Section 2, T. 3 S. R. 4 W. S. B. B. & M.
DAVIDSON & FULMOR, Engineers. April, 1940.
Scale 1" = 400'
Surveyed at the Request of the Pasadena Hotel Corporation.

I hereby certify that I am a Registered Civil Engineer of the State of California that this map consisting of one (1) sheet correctly represents a survey made under my supervision in April, 1940, that all the monuments shown hereon actually exist and their positions are correctly shown.

J. J. Dundas
Registered Engineer No 862

NOTE
Bearings are derived from the $\frac{3}{4}$ " of the State Highway and are true courses.
Distances are shown in feet and decimals thereof.
 $\frac{3}{4}$ " x 30" pipes set at points shown thus "o" unless otherwise noted.

Examined June 7, 1940

A. C. Fulmor
County Surveyor

R/S 11/98