

Nov. 14, 1947

Agnes Burch
#100
11:15 P.M.

RECORD OF SURVEY

of a Portion of Block 50 of the Lands of the Riverside Land and Irrigating Company as shown by Map on file in Book 1 of Maps page 70 San Bernardino County Records, also a Portion of Blk 1 of the La Sierra Gardens as shown by Map on file in Book 11 of Maps page 50 Records of Riverside County, California

October 1947

Scale 1 in. = 200 ft

Donald J. McKee - Licensed Surveyor

Surveyed at the request of Tony Corona Et al

I hereby certify that I am a Licensed Land Surveyor of the State of California and that this map consisting of one sheet correctly represents a survey made by me in Oct 1947 and that all the monuments shown hereon actually exist and their positions are correctly shown.

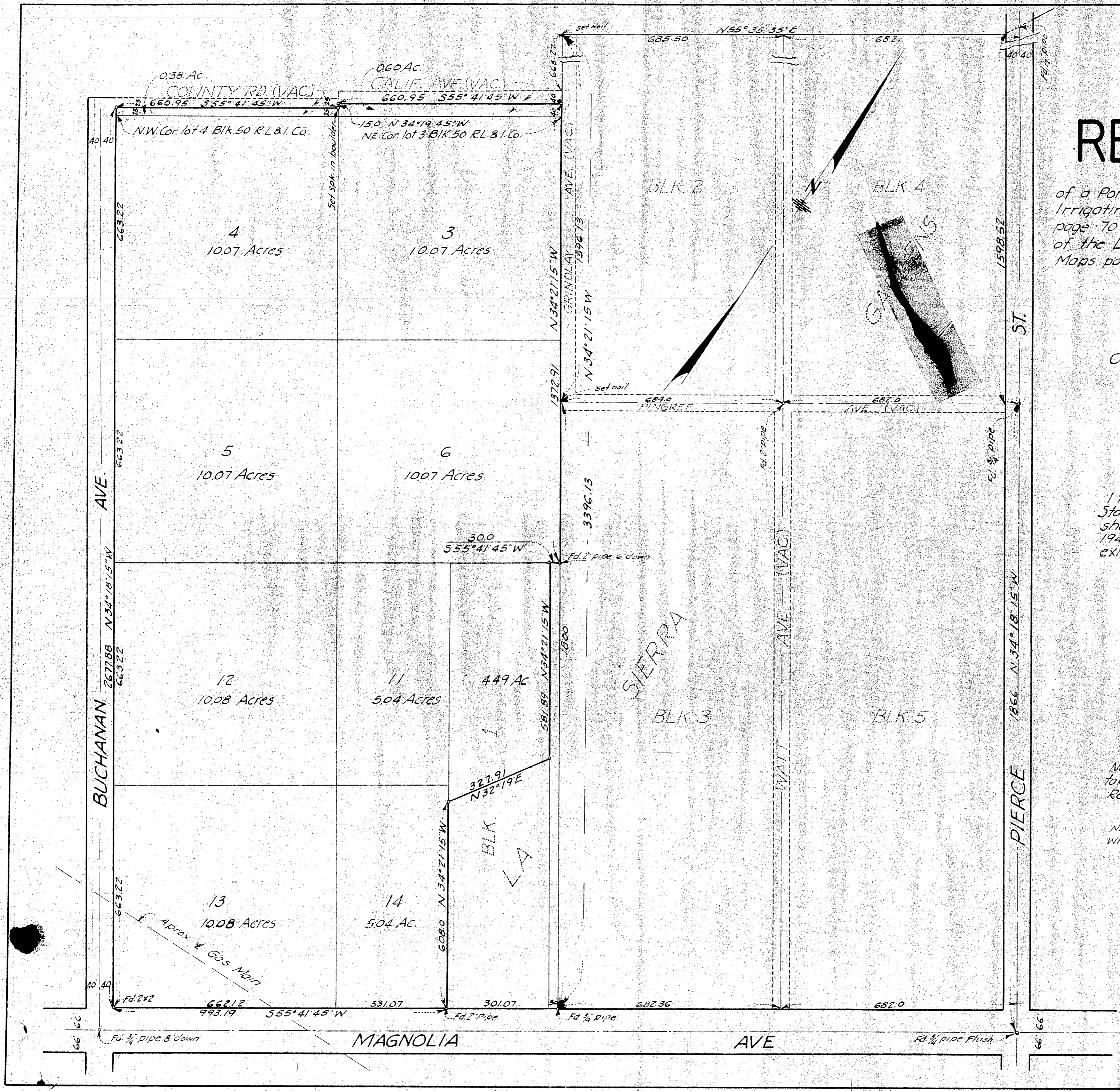
Donald J. McKee
Licensed Land Surveyor Cert. No. 1825

Examined Nov. 14, 1947

G. C. Keith
County Surveyor Riverside County, Calif.

Note: Bearings are based on the center line of Magnolia Ave taken as S 55° 41' 45" W as shown by Map of La Sierra Gardens Rec. in M.B. 11, pg. 50 Records of Riverside Co. Calif.

Note: 1" or 3/4" pipe set at all corners shown thus, unless otherwise noted.



MAGNOLIA AVE

WATT AVE (VAC)

PIERCE ST

SIERRA

BLK. 2

BLK. 4

BLK. 3

BLK. 5

BLK. 1
LA

4
10.07 Acres

3
10.07 Acres

5
10.07 Acres

6
10.07 Acres

12
10.08 Acres

11
5.04 Acres

4.49 Ac.

13
10.08 Acres

14
5.04 Ac.

0.38 Ac

0.60 Ac

COUNTY RD (VAC)

CALIF. AVE (VAC)

NW Cor. lot 4 Blk 50 R.L. & I. Co.

NE Cor. lot 3 Blk 50 R.L. & I. Co.

BUCHANAN AVE

BUCHANAN AVE

WATT AVE (VAC)

WATT AVE (VAC)

AVE

ST

PIERCE ST

PIERCE ST

set nail

set nail

fd. 2" pipe 6" down

fd. 2" pipe

fd. 3/4" pipe

40 40

40 40

40 40

66 66

66 66

685.50

682

663.22

1396.73

1396.73

1372.91

3396.13

581.89

327.91

608.0

301.07

301.07

682.36

682.0

660.95

660.95

663.22

663.22

663.22

663.22

2677.88

663.22

663.22

663.22

663.22

663.22

663.22

663.22

663.22

663.22

663.22

663.22

663.22

663.22

663.22

663.22

663.22

663.22

663.22

663.22

663.22

663.22

663.22

663.22

663.22

663.22

663.22

663.22

663.22

663.22

663.22

663.22

663.22

663.22

663.22

663.22

663.22

663.22

663.22

663.22

663.22

663.22

663.22

663.22

663.22

663.22

663.22

663.22

663.22

663.22

663.22

663.22

663.22

663.22

663.22

663.22

663.22

663.22

663.22

663.22

663.22

663.22

663.22

663.22

663.22

663.22

663.22

663.22

663.22

663.22

663.22

663.22

663.22

663.22

663.22

663.22

663.22

663.22

663.22

663.22

663.22

663.22

663.22

663.22

663.22

663.22

663.22

663.22

663.22

663.22

663.22

663.22

663.22

663.22

663.22

663.22

663.22

663.22

663.22

663.22

663.22

663.22

663.22

663.22

663.22

663.22

663.22

663.22

663.22

663.22

663.22

663.22

663.22

663.22

663.22

663.22

663.22

663.22

663.22

663.22

663.22

663.22

663.22

663.22

663.22

663.22

663.22

663.22

663.22

663.22

663.22

663.22

663.22

663.22

663.22

663.22

663.22

663.22

663.22

663.22

663.22

663.22

663.22

663.22

663.22

663.22

663.22

663.22

663.22

663.22

663.22

663.22

663.22

663.22

663.22

663.22

663.22

663.22

663.22

663.22

663.22

663.22

663.22

663.22

663.22

663.22

663.22

663.22

663.22

663.22

663.22

663.22

663.22

663.22

663.22

663.22

663.22

663.22

663.22

663.22

663.22

663.22

663.22

663.22

663.22

663.22

663.22

663.22

663.22

663.22

663.22

663.22

663.22

663.22

663.22

663.22

663.22

663.22

663.22

663.22

663.22

663.22

663.22

663.22

663.22

663.22

663.22

663.22

663.22

663.22

663.22

663.22

663.22